

Installation Instructions

Installation

Determine the left and right sides of the machine from the normal operating position.

Preparing the Machine

1. Park the machine on a level surface, move the motion-control levers to the NEUTRAL position, shut off the engine, wait for all moving parts to stop, remove the key, and chock the rear tires.
2. Remove the bolts on the backplate securing the brine tank in place, remove the bolts securing the operator platform in place, remove the operator platform, disconnect the hoses attached to the top of the brine tank, and remove the brine tank through the rear of the machine.

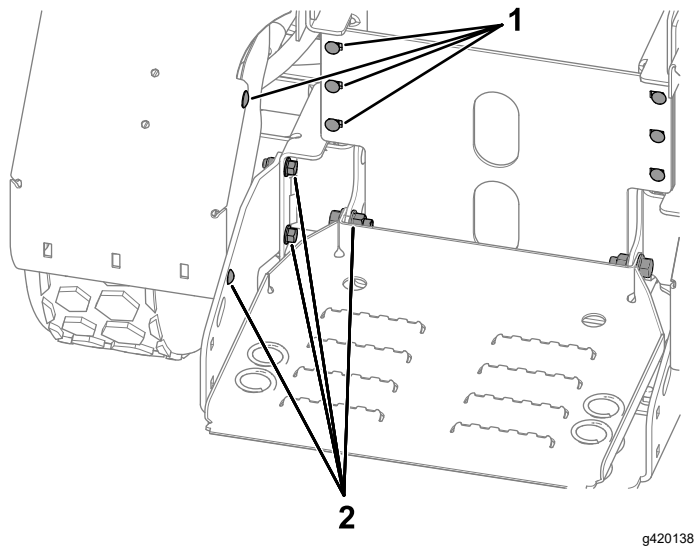


Figure 1

Locations of bolts to remove. Repeat on the right side.

1. Remove these bolts.

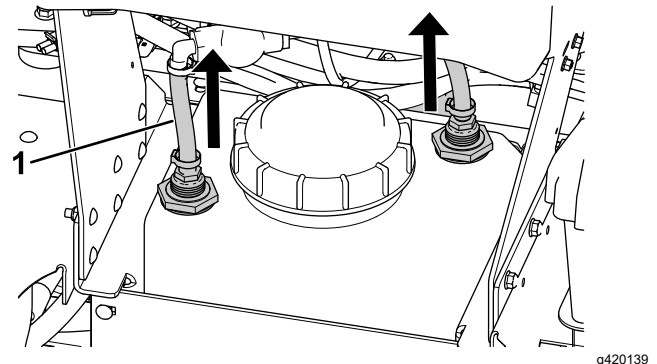


Figure 2

1. Brine tank hose

3. Raise the front of the machine and support it with jack stands.
4. Remove the lug nuts securing the front tires to the machine and remove the front tires.

Installing the Parking Brakes

1. Remove the 6 carriage bolts and locknuts installed on the sides of the machine and discard the hardware.

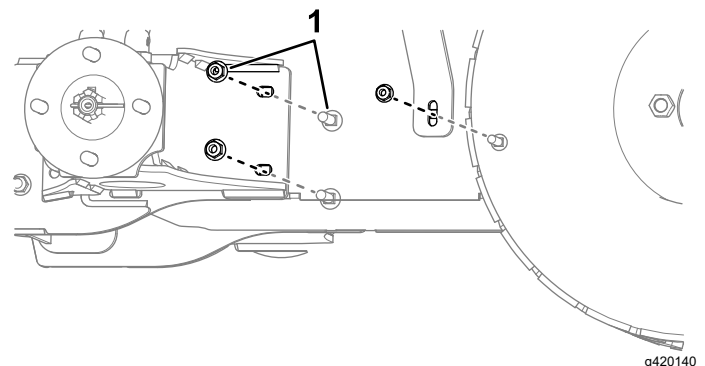


Figure 3

Left side of the machine shown. Repeat on the other side.

1. Remove 6 carriage bolt and fastener pairs.
2. Install the parking brake to the left-side bracket using 2 bushings and secure it with a hairpin cotter as shown in Figure 4.

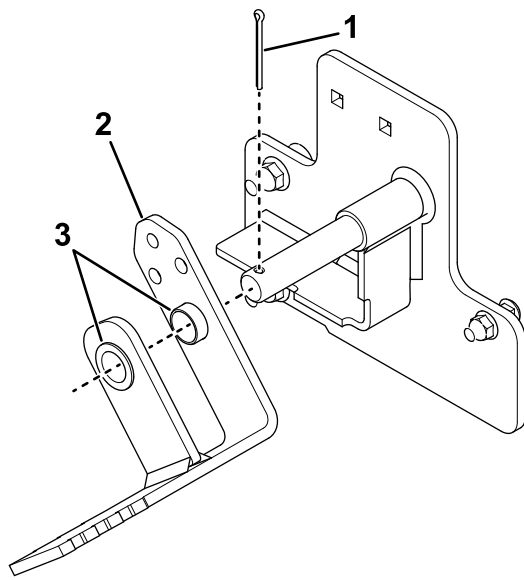


Figure 4

g420142

- | | |
|-------------------|------------|
| 1. Hairpin cotter | 3. Bushing |
| 2. Parking brake | |

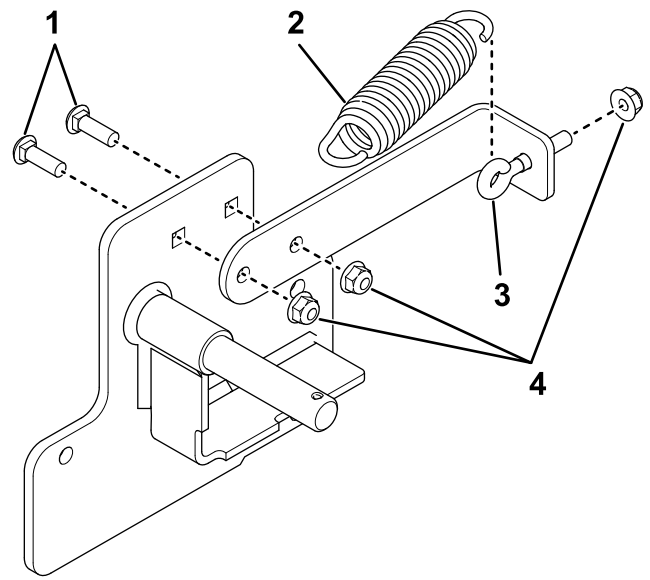


Figure 6

g420143

- | | |
|----------------------------------|------------------------|
| 1. Carriage bolt (5/16 x 1 inch) | 3. Eye bolt |
| 2. Spring | 4. Locknut (5/16 inch) |

3. On the left side of the machine, install the parking-brake assembly using 2 carriage bolts (3/8 x 1-1/2 inches), 2 locknuts (3/8 inch), 1 carriage bolt (5/16 x 1-1/4 inches), and 1 locknut (5/16 inch).

6. On the right side of the machine, install the parking-brake assembly to the machine using the same processes as 2 and step 3, and attach the spring to the parking brake as shown in Figure 7.

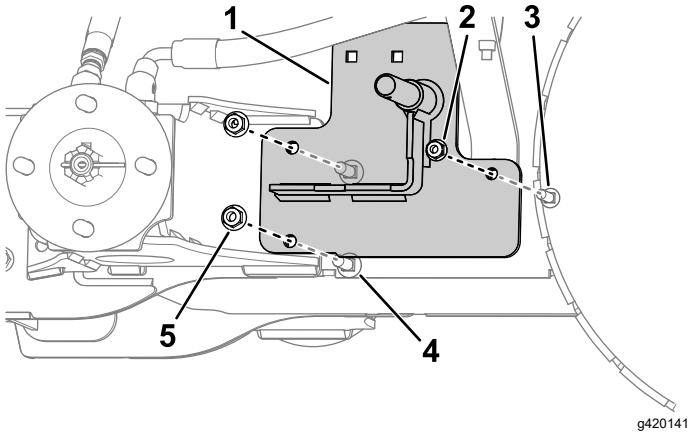


Figure 5

Parking brake hidden

g420141

- | | |
|--|---------------------------------------|
| 1. Pawl bracket | 4. Carriage bolt (3/8 x 1-1/2 inches) |
| 2. Locknut (5/16 inch) | 5. Locknut (3/8 inch) |
| 3. Carriage bolt (5/16 x 1-1/4 inches) | |

4. Torque the 3/8 inch fasteners to 19 to 25 N·m (14 to 18 ft·lb) and torque the 5/16 inch fasteners to 10 to 14 N·m (7 to 10 ft·lb).
5. Install the spring mount and spring to the other pawl bracket using 2 carriage bolts (5/16 x 1 inch), 3 locknuts, and 1 eye bolt (Figure 6).

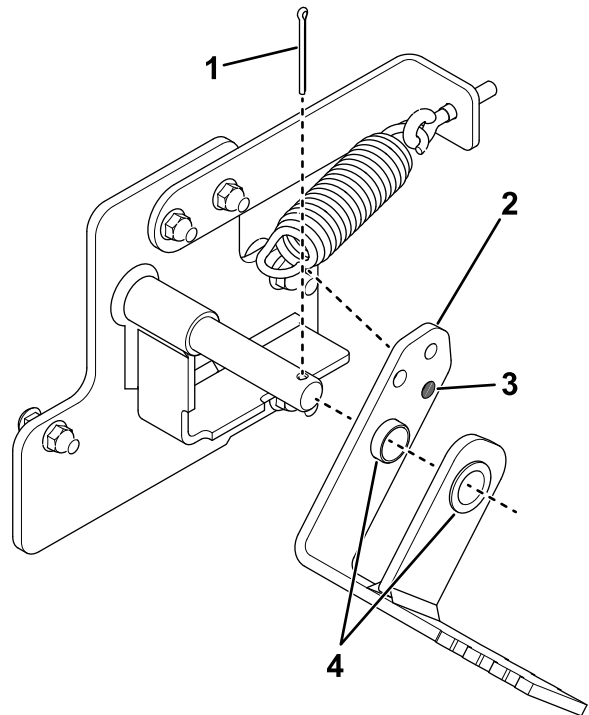


Figure 7

g420145

- | | |
|-------------------|--|
| 1. Hairpin cotter | 3. Use this hole to attach the spring. |
| 2. Parking brake | 4. Bushing |

7. Tighten all fasteners securely.
8. Install the previously removed front tires using lug nuts. Torque the fasteners to 102 N·m (75 ft-lb).
9. Lower the machine from the jack stands.

Installing the Rear Brackets and Brake Linkages

1. Attach the end of the brake linkage without the spring through the hole in the parking brake and secure it using 1 nut (5/16 inch). Repeat on the other side. Rest the linkages along the side of the machine until step 7.

Note: The linkages should be routed behind or under any hoses on the machine.

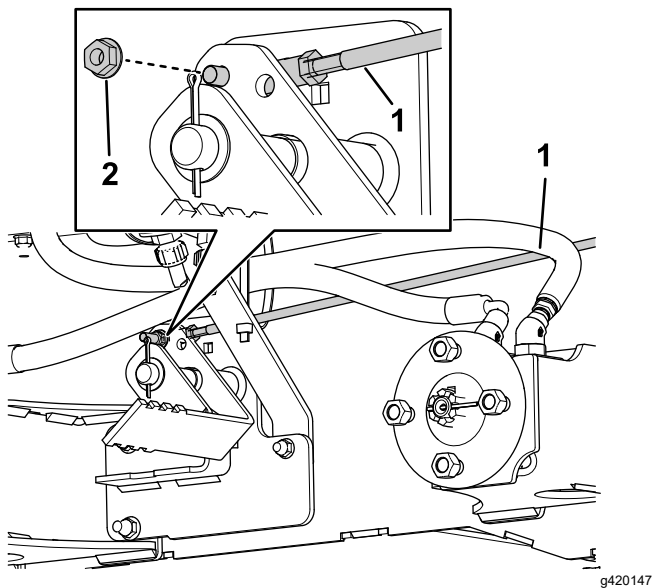


Figure 8
Rear tire hidden

1. Brake linkage
2. Nut

2. Slide the brine tank into position through the rear of the machine, connect the hoses, and install the operator platform; refer to step 2 in [Preparing the Machine \(page 1\)](#).
3. Attach the parking-brake lever assembly to the rear brackets using 2 bushings (A in [Figure 9](#)).
4. Attach the brake stop to the right rear bracket using 2 carriage bolts (5/16 x 1 inch) and 2 locknuts (5/16 inch) (B in [Figure 9](#)).

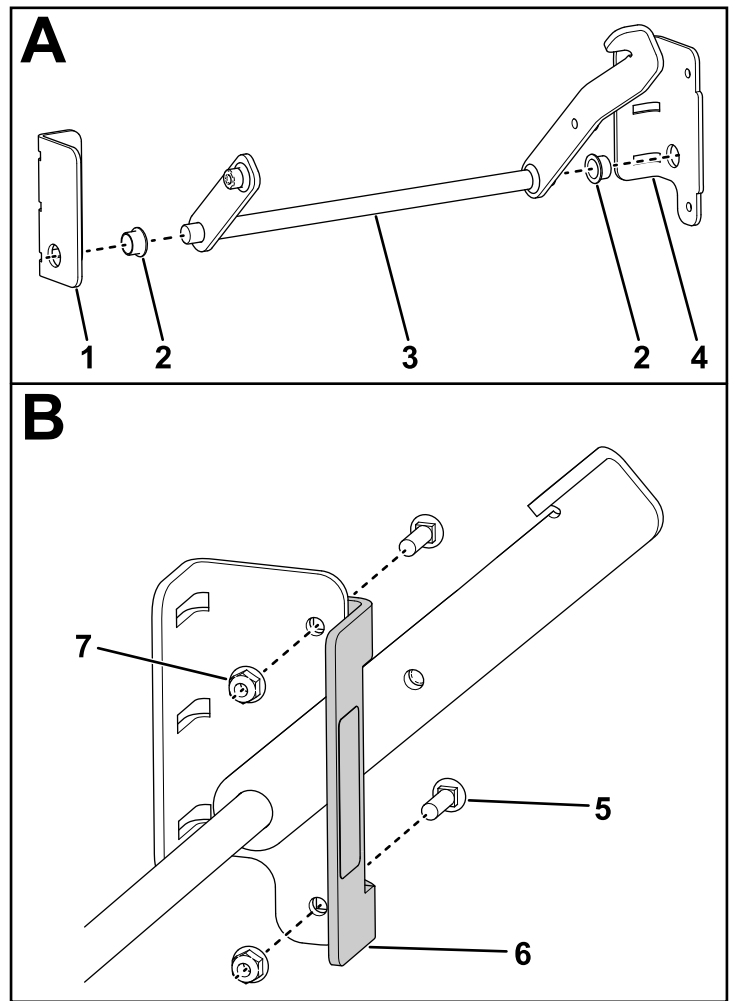


Figure 9

1. Left rear bracket
2. Bushing
3. Parking-brake lever assembly
4. Right rear bracket
5. Carriage bolt (5/16 x 1 inch)
6. Brake stop
7. Locknut (5/16 inch)

- Position the brine-tank backplate behind the brine tank. Attach the backplate and the bracket and lever assembly to the machine frame using 6 carriage bolts (5/16 x 1 inch) and 6 locknuts (5/16 inch).

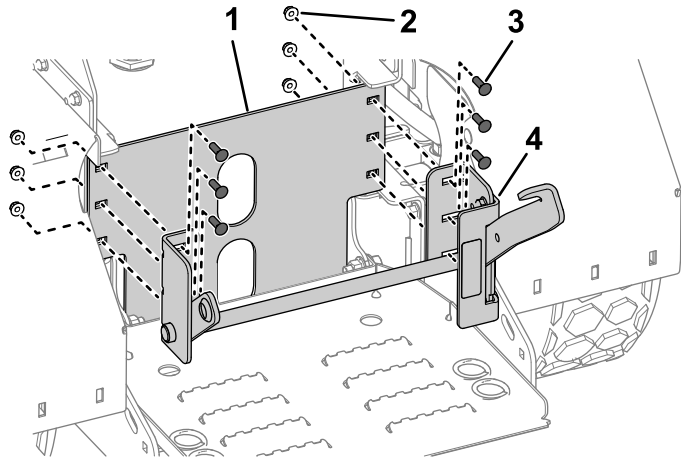


Figure 10

g420150

- | | |
|------------------------|----------------------------------|
| 1. Backplate | 3. Carriage bolt (5/16 x 1 inch) |
| 2. Locknut (5/16 inch) | 4. Bracket and lever assembly |

- Torque the fasteners to 10 to 14 N·m (7 to 10 ft·lb).
- Screw the linkage end with the adjustment spring into the threaded spacer on the brake lever. Repeat on the other side.

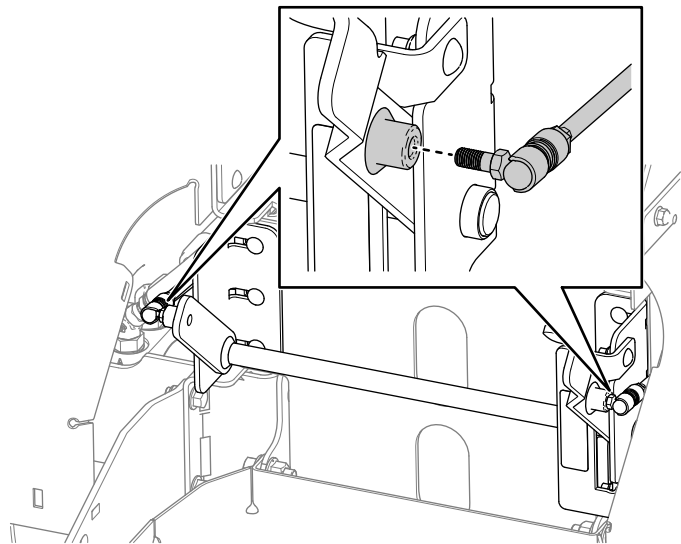
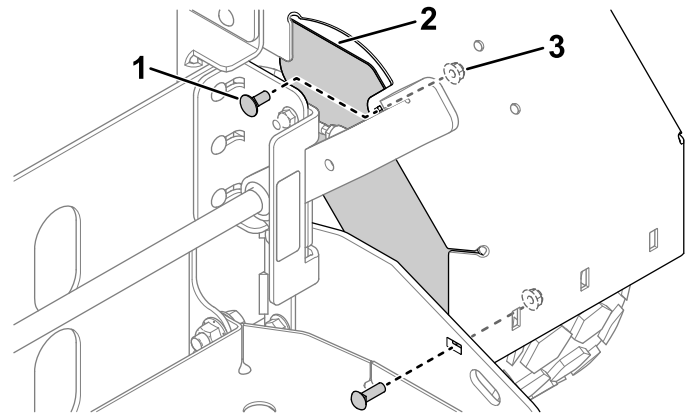


Figure 11

g420151

- Secure the 2 side plates to the rear fenders using 4 carriage bolts (5/16 x 3/4 inch) and 4 locknuts (5/16 inch).



g420188

Figure 12

Repeat on the other side.

- | | |
|------------------|------------|
| 1. Carriage bolt | 3. Locknut |
| 2. Side plate | |

- Tighten all fasteners securely.

Operation

Push down on the lever to engage the parking brake.

The pawl should be 1 cm (3/8 inch) from the tire tread in the released position. To adjust the parking brake, change the position of the adjustment nuts on the brake linkages.