

Installation Instructions

BOSS Products limited consumer warranty and BOSS Products commercial warranty policies are located at www.BOSSPlow.com.

Patent www.ttcopats.com.

Installation

Preparing the Machine

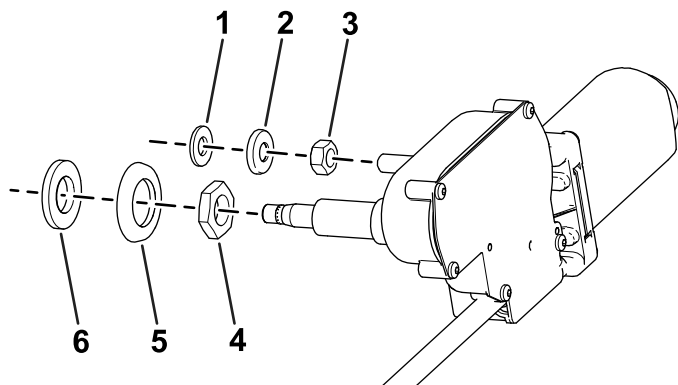
1. Park the machine on a level surface.
2. Lower the attachment.
3. Move the motion-control levers to the NEUTRAL position.
4. Wait for all moving parts to stop.
5. Engage the parking brake.
6. Remove the key.
7. Allow machine components to cool.

Installing the Wiper Kit

Note: You must install the Power Kit (SNR24421) before installing this kit.

Determine the left and right sides of the vehicle from the normal operating position.

1. Install and plug in the wiper motor.
 - A. Install a small seal, small compression washer, small jam nut, large jam nut, large compression washer, and large seal onto the wiper motor.



g558813

Figure 1

- | | |
|-----------------------------|-----------------------------|
| 1. Small seal | 4. Large jam nut |
| 2. Small compression washer | 5. Large compression washer |
| 3. Small jam nut | 6. Large seal |



- B. Install a small compression washer, small seal, large seal, large compression washer, large jam nut, and seal nut to secure the wiper motor to the frame.

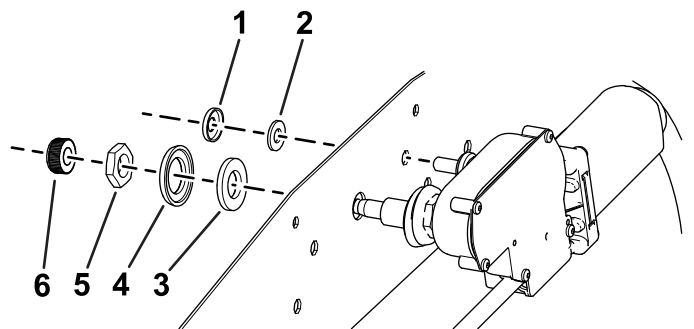


Figure 2

- | | |
|-----------------------------|-----------------------------|
| 1. Small compression washer | 4. Large compression washer |
| 2. Small seal | 5. Large jam nut |
| 3. Large seal | 6. Seal nut |

- C. Plug the wiper motor into the power kit wire harness.

2. Insert the key into the machine and turn the machine on.
3. Turn the wiper motor on and off to reset the motor.
4. Turn the machine off and remove the key. Allow machine components to cool.
5. Remove the wiper arm caps and insert the wiper arm assembly onto the wiper motor.

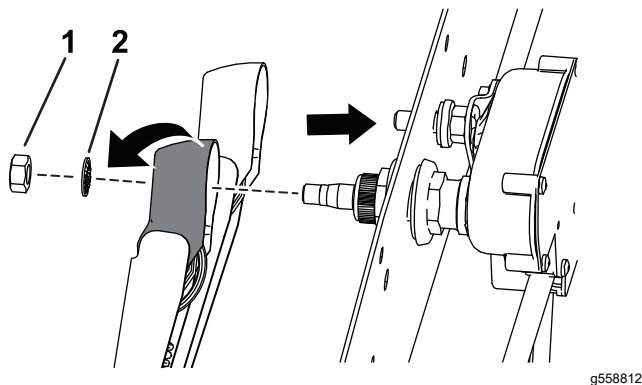


Figure 3

- | | |
|--------|----------------|
| 1. Nut | 2. Star washer |
|--------|----------------|

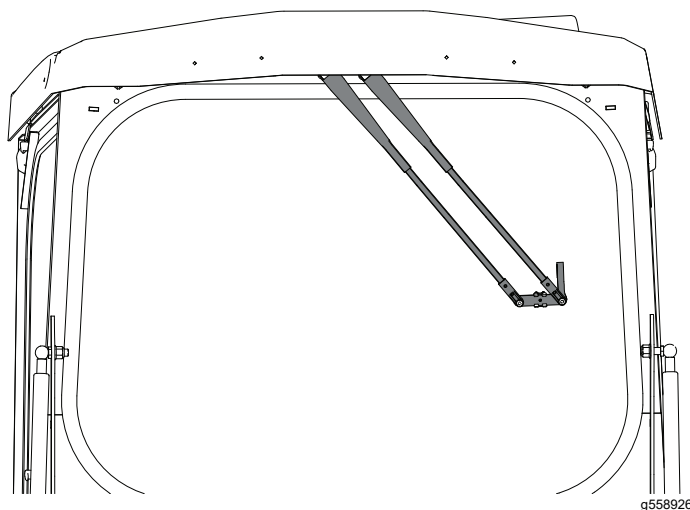


Figure 4

6. Secure the assembly to the motor using the star washer and nut.
7. Install the wiper to the wiper arm.
8. Run the wiper to ensure proper function.