

MSC10230 Headlight Adapter Installation Procedure

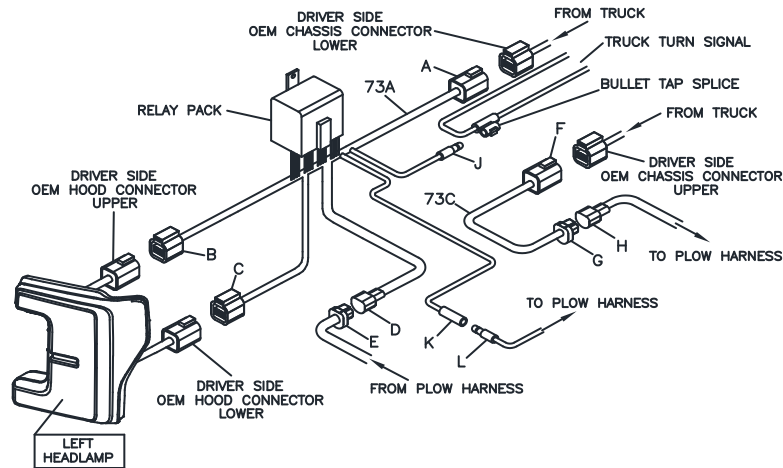


Figure 1. Ford Super-Duty Halogen Headlight Adapter Installation

G13960

This Installation Procedure is for 2017 & Newer Ford Super-Duty trucks with Halogen Headlights.

Ensure that truck is off and not moving before beginning installation.

1. Locate and disconnect vehicle OEM headlight harnesses on Driver Side of vehicle.
2. Connect plug (A) of Headlight Adapter (73A) into the vehicle driver side lower OEM headlight harness wrapped in black tape.
3. Connect plug (B) of Headlight Adapter (73A) labeled Upper Lamp into upper connector of the Driver Side headlight.
4. Connect plug (C) of Headlight Adapter (73A) labeled Lower Lamp into lower connector of the Driver Side headlight.
5. Connect black rubber connector (D) of Headlight Adapter (73A) into Driver Side blue plastic connector (E) from Plow Harness.
6. Connect plug (F) of Headlight Adapter (73C) with gray tape into the vehicle driver side upper OEM headlight harness wrapped in gray tape.

7. Connect blue plastic connector (G) of Headlight Adapter (73C) into Driver Side black rubber connector (H) from Plow Harness.

8. Install the bullet tap splice, supplied in the control kit, onto the driver side turn signal feed wire. Then connect the male bullet (J) of light adapter to the bullet tap splice.

9. Connect the female bullet (K) of Light Adapter to the Plow Harness male bullet (L).

10. Repeat steps 1-7 for Passenger Side Headlight Adapter (73B).

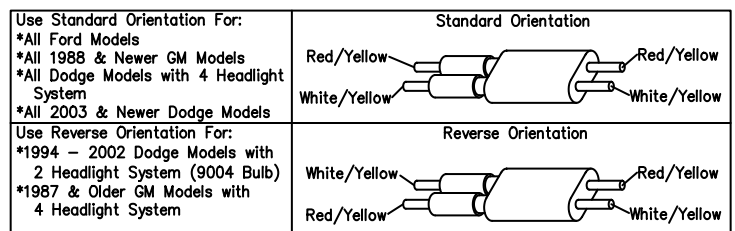


Figure 2. Vehicle Option Connector

G10202

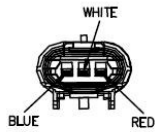
11. Locate vehicle option connector. Align the connector so that the wire colors are positioned to match the vehicle it is installed on. This is illustrated in Figure 2.

13-Pin Headlight Adapter Kit

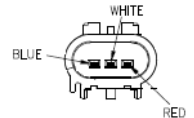
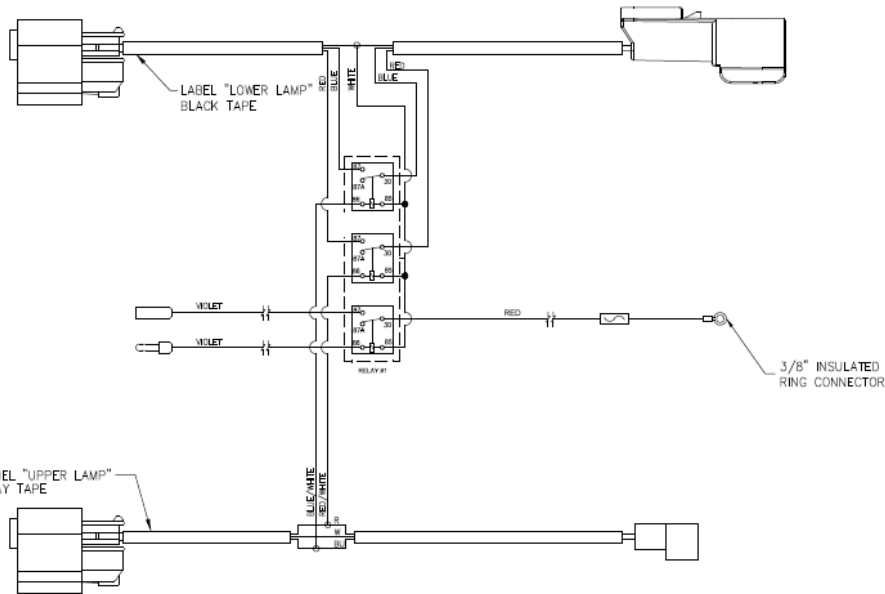
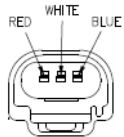
9008 (H13) Bulb

2017+ Ford Super Duty with Quad Headlights

MSC10230



HEADLIGHT ADAPTER (2) REQUIRED



HEADLIGHT ADAPTOR 2 (2) REQUIRED

RELAY ORIENTATION IN HOUSING
VIEW FROM TOP

