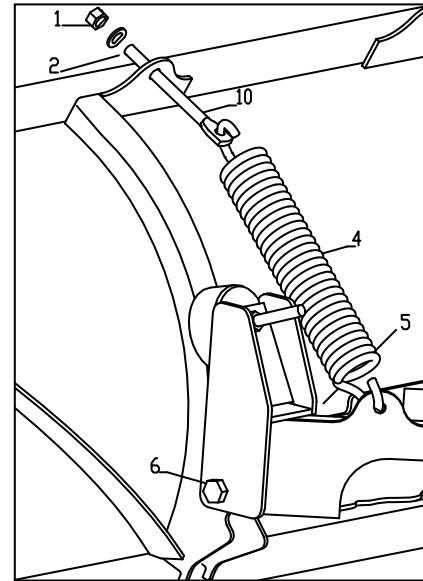


Step 1.

G10648

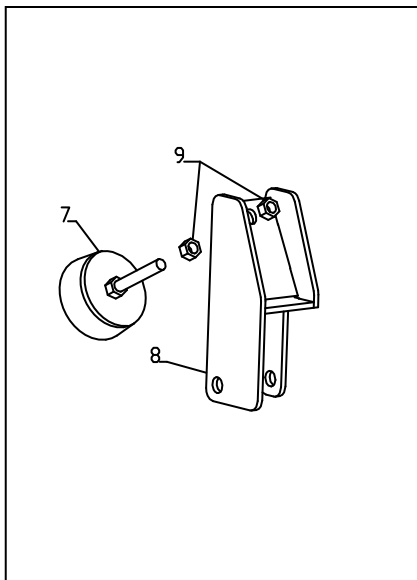
Follow instructions one side at a time or the blade could fall causing injury. Remove Trip Return Springs (4) Pushframe to Attachment Bar 5/8" x 4" Bolt (6) and 5/8" Nut (5).



Step 3.

G10650

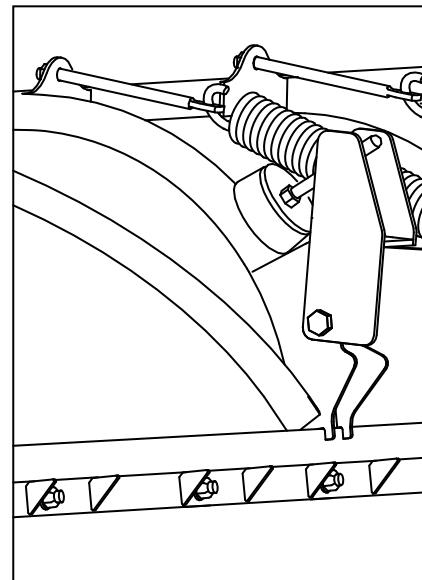
Reassemble mounting bracket first using existing 5/8 Bolt (6) and Nut (5). Attach Trip Return Spring (4) using 8" eyebolt (10) with 1/2" Flat Washer (2) and 1/2" Nylon Lock Nut (1). Repeat for other side.



Step 2.

G10649

Assemble Bumper Stop (7) onto Attack Angle Adjustment Bracket (8) using 1/2" Full Nuts (9) one on either side of bracket.



Step 4.

G10651

To adjust stop loosen Trip Spring and extend Bumper Stop. Retighten Bumper Stop and retighten Trip Spring.