



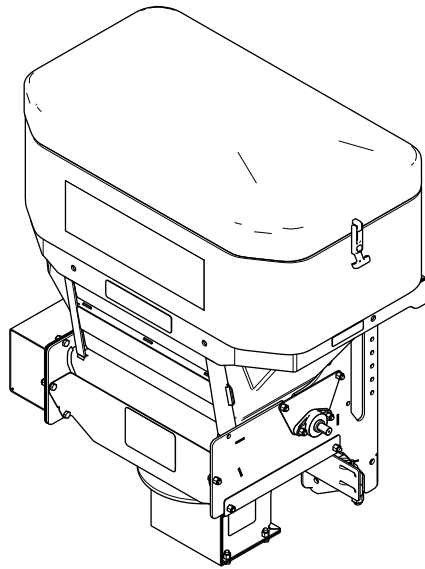
P.O. Box 787
Iron Mountain, MI 49801
United States

Owner's Manual

TGS 800 Tailgate Spreader

Part No. TGS08000—Serial No. 400000000 and Up

Part No. TGS11072—Serial No. 400000000 and Up



This product complies with all relevant European directives; for details, please see the separate product specific Declaration of Conformity (DOC) sheet.

BOSS Products limited consumer warranty and BOSS Products commercial warranty policies are located at www.bossplo.com.

Patents Pending.

⚠ WARNING

**CALIFORNIA
Proposition 65 Warning**

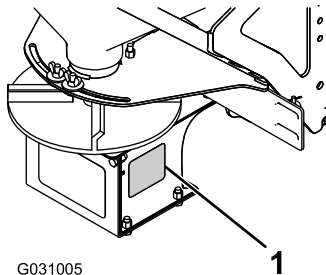
Use of this product may cause exposure to chemicals known to the State of California to cause cancer, birth defects, or other reproductive harm.

Introduction

Read this information carefully to learn how to operate and maintain your product properly and to avoid injury and product damage. You are responsible for operating the product properly and safely.

You may contact BOSS directly at www.bossplo.com for product and accessory information, help finding a dealer, or to register your product.

Whenever you need service, genuine BOSS parts, or additional information, contact an Authorized BOSS Dealer or BOSS Technical Service (1-800-286-4155) and have the model and serial numbers of your product ready. **Figure 1** identifies the location of the model and serial numbers on the product. Write the numbers in the space provided.



G031005

g031005

Figure 1

1. Serial number location

Model No. _____
Serial No. _____

This manual identifies potential hazards and has safety messages identified by the safety-alert symbol (**Figure 2**), which signals a hazard that may cause serious injury or death if you do not follow the recommended precautions.



Figure 2

g000502

1. Safety-alert symbol

This manual uses 2 words to highlight information. **Important** calls attention to special mechanical information and **Note** emphasizes general information worthy of special attention.

Contents

Safety	3
Preparation.....	3
Operation.....	4
Safety and Instructional Decals	5
Setup	7
Installing the Wire Harness	7
Installing the Slide-In Attachment.....	8
Mounting the Spreader	8
Installing the RT3 Attachment.....	9
Mounting the Spreader	9
Installing the Spreader Controller.....	11
Product Overview	12
Controls	12
Specifications	13
Operation	14
Mounting the Spreader	14
Removing the Spreader	14
Mounting the Spreader	15
Removing the Spreader	15
Loading the Spreader	16
Operating the Spreader	17
Freeing a Clog	17
Unloading the Spreader	17
Adjusting the Material Deflectors	18
Adjusting the Rubber Flaps.....	18
Adjusting the Spreader Vibration	19
Operating Tips	19
Maintenance	20
Recommended Maintenance Schedule(s)	20
Lubrication	20
Greasing the Machine.....	20
Storage	20
Troubleshooting	21

Safety

Improperly using and maintaining the equipment can result in injury. To reduce the potential for injury, comply with these safety instructions and always pay attention to the safety-alert symbol **A**, which means: **Caution, Warning, or Danger**—personal safety instruction. Failure to comply with the instruction may result in personal injury or death.

Preparation

- Ensure that only trained personnel install and perform maintenance on the equipment.
- Always wear appropriate personal protective equipment when loading, unloading, and servicing the spreader. Wear substantial, slip-resistant footwear, cold-weather clothing, safety glasses, and dust protection.
- Ensure that your rearview mirror is in a good operating position.
- Many trucks are equipped with air bags. Never disable, remove, or relocate any sensors or other components related to the operation of the air bags.
- TGS 800 spreaders with slide-in or RT3 attachments must only be used with a minimum Class IV receiver hitch. Do not exceed the vehicle hitch rating.
- The TGS 800 can hold a maximum weight of 362 kg (800 lb) of salt. Do not exceed this weight.

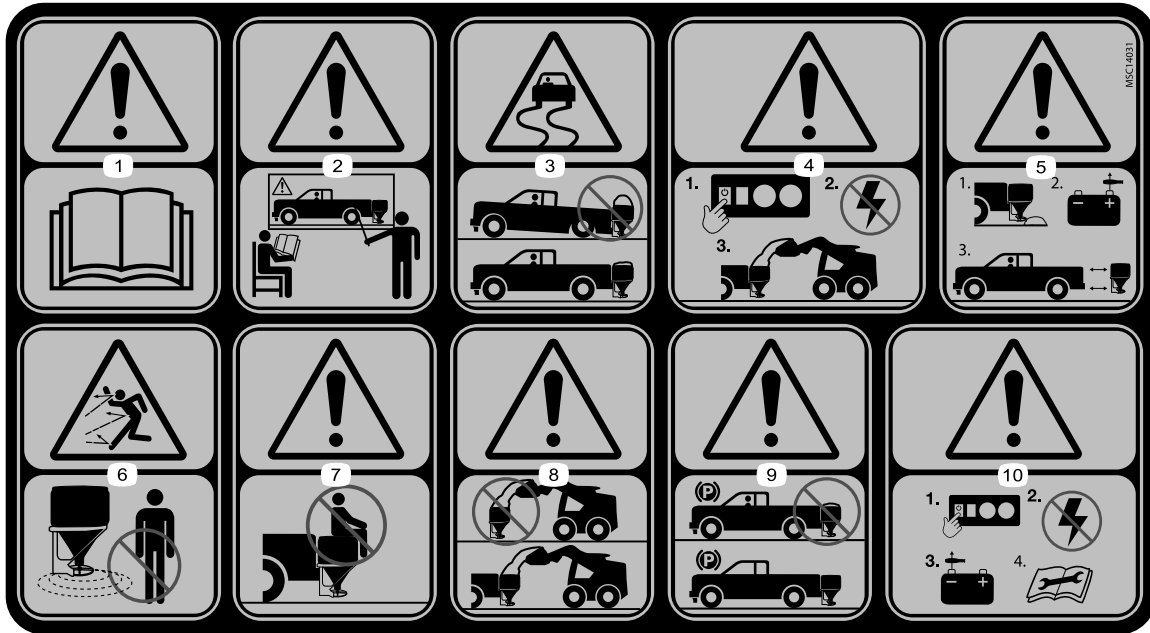
Operation

- Read the *Owner's Manual* before operating or servicing the spreader.
- Do not operate the machine while ill, tired, or under the influence of alcohol or drugs.
- For vehicle-mounted spreaders, always follow the manufacturer's recommendations for proper parking procedures.
- Always wear your seatbelt while operating a motor vehicle.
- Do not exceed 22.5 km/h (14 mph) while spreading.
- This spreader has an operating sound level below 70 dBA.
- Never put any part of your body between the spreader and the vehicle.
- Overloading the spreader could result in an accident or damage. Never exceed the gross-vehicle-weight rating (GVWR) or the front or rear gross-axle-weight ratings (FGAWR or RGAWR) for the vehicle.
- This spreader is restricted to the use of sand, salt, or a sand/salt mix only. Do not run other materials through the spreader.
- Do not attempt to mount or remove the spreader with material in it.
- Turn the spreader off before filling, mounting, removing, servicing, or cleaning it.
- Never operate the spreader within 7.6 m (25 ft) of bystanders.
- Do not climb into or ride on the spreader.
- Keep your hands, feet, and clothing away from moving parts and mounting points.
- Mount the spreader to a vehicle before loading material.
- Install ratchet straps and keep them properly tightened with the slide-in and RT3 attachments.
- When transporting the spreader, ensure that it is properly secured. Instructions are available at www.bossplow.com.
- The slide-in attachment must be fully engaged and pinned into the 5 cm (2 inch) receiver hitch of the vehicle.
- The upper and lower pins of the RT3 attachment must be fully engaged and pinned into the 5 cm (2 inch) receiver hitch of the vehicle.
- Material safety data sheets (MSDS) are available at www.bossplow.com.
- Use a 1/2 ton minimum lifting device to move heavy spreader components.
- Do not store material in the hopper.

Safety and Instructional Decals



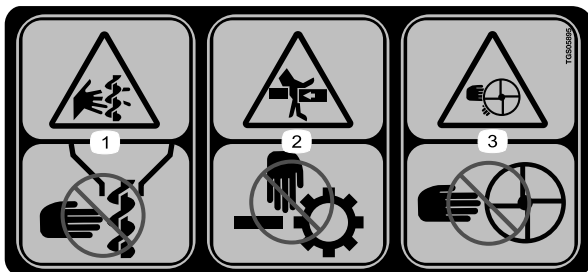
Safety decals and instructions are easily visible to the operator and are located near any area of potential danger. Replace any decal that is damaged or missing.



TGS06269

decaltgs06269b

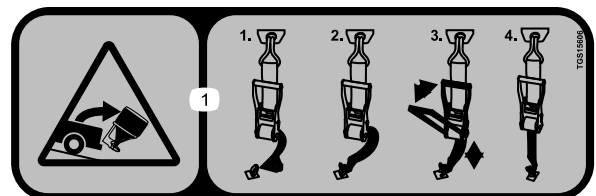
1. Warning—read the *Owner's Manual*.
2. Warning—all operators should be trained before operating the machine.
3. Loss of control hazard—do not overfill the machine.
4. Warning—turn the machine off before filling.
5. Warning—empty the hopper and disconnect the power before installing or removing the machine.
6. Thrown object hazard—keep bystanders away from the machine.
7. Warning—do not stand or ride on the machine.
8. Warning—the machine must be installed before filling.
9. Warning—do not store materials in the machine.
10. Warning—turn the machine off and disconnect the power before servicing the machine.



TGS05895

decaltgs05895b

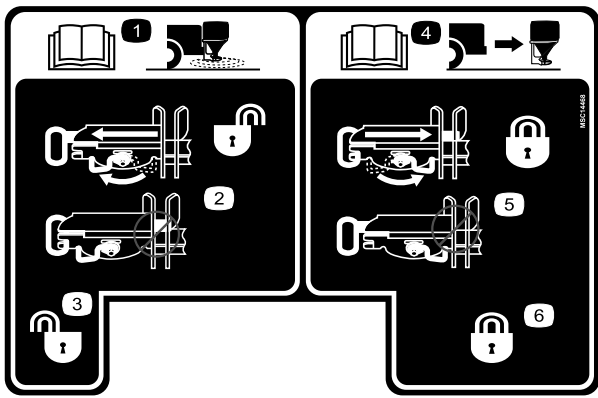
1. Cutting/dismemberment hazard; auger—keep fingers and hands clear of the auger.
2. Crushing hazard—keep fingers and hands clear of moving parts.
3. Cutting/dismemberment hazard; spinner—keep fingers and hands clear of the spinner.



TGS15606

decaltgs15606

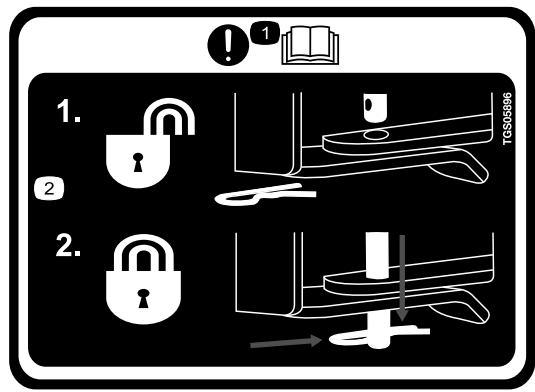
1. Loss of machine hazard—the ratchet straps must be secured at all times.



decalmsc14468

MSC14468

- | | |
|--|---|
| 1. Read the <i>Owner's Manual</i> for information on attaching the spreader. | 4. Read the <i>Owner's Manual</i> for information on removing the spreader. |
| 2. Coupler spring pin unlock | 5. Coupler spring pin lock |
| 3. Coupler spring pin unlock position | 6. Coupler spring pin lock position |



decaltgs05896

TGS05896

- | | |
|---|---|
| 1. Important—read the <i>Owner's Manual</i> . | 2. The lock pin must be fully engaged before using the machine. |
|---|---|



decalmsc06370

MSC06370

(non-replaceable decal)

- | | |
|-----------------|------------------|
| 1. Feeder speed | 4. Vibrator |
| 2. Power | 5. Blast |
| 3. Lights | 6. Spinner speed |

Setup

Note: Either the slide-in or RT3 attachment is required to install this machine. Contact your Authorized BOSS Dealer for more information.

Installing the Wire Harness

⚠ DANGER

Vehicle engines contain moving parts and can become extremely hot, capable of causing severe burns and serious bodily harm.

Shut off the engine and allow it sufficient time to cool down before installing this kit.

⚠ DANGER

Vehicle batteries can cause dangerous electrical shocks that could lead to severe burns or death.

Disconnect your battery before installing this kit.

1. Secure the spreader connectors end of the vehicle wire harness ([Figure 3](#)) to the center of the rear vehicle bumper with a cable tie.
2. Route the wire harness along the driver-side frame-rail and into the engine compartment, and secure it with cable ties.

Note: Keep the wire harness away from any hot or moving parts.

3. Insert the controller connectors, spade connector, and ground cable through the firewall and into the vehicle cab, and secure them with cable ties.

Note: Route the connectors to the location that you want to install your controller.

4. Connect the black ring connector in the engine compartment to the negative (-) battery terminal ([Figure 3](#)).
5. Connect the red ring connector in the engine compartment to the positive (+) battery terminal ([Figure 3](#)).
6. Connect the spade connector to an ignition switch power source on the vehicle ([Figure 3](#)).
7. Connect the ground cable to the negative (-) battery post or chassis ground ([Figure 3](#)).
8. Wrap all of the excess wire and secure it in the engine compartment with cable ties.

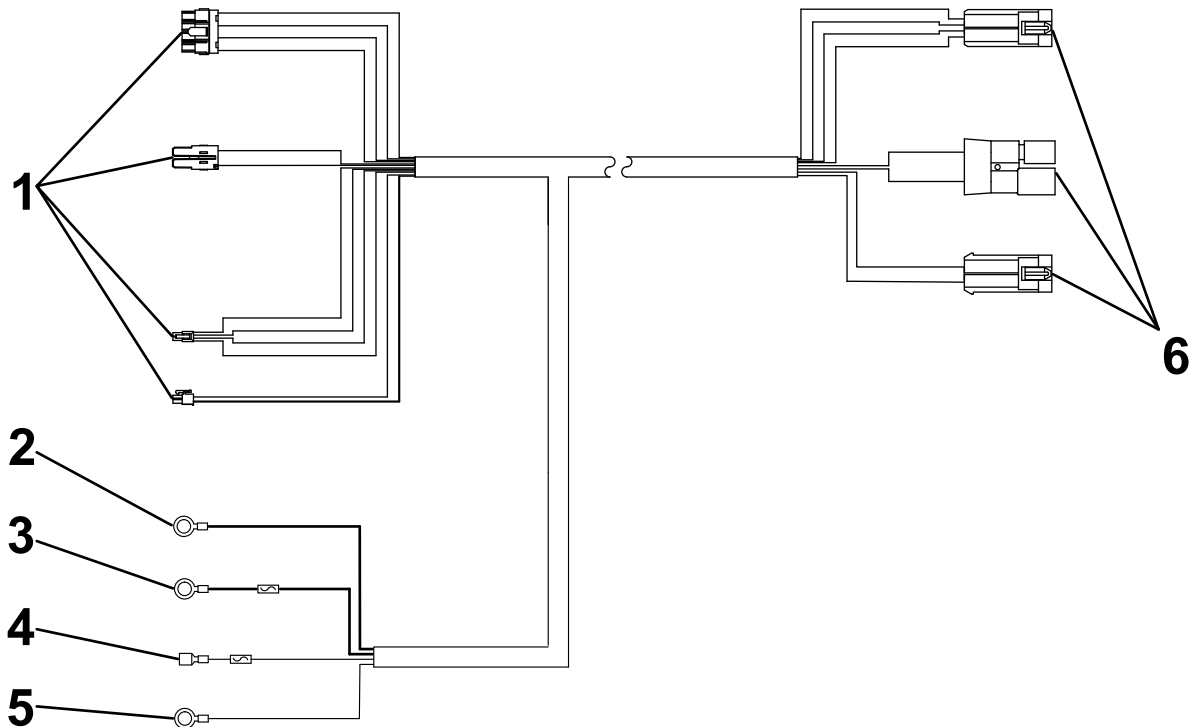


Figure 3

g239091

1. Controller connectors
2. Black ring connector
3. Red ring connector

4. Spade connector
5. Ground cable
6. Spreader connectors

Installing the Slide-In Attachment

1. Mount the slide-in attachment to the spreader using 4 bolts (1/2 inch) and locknuts (1/2 inch) and torque the bolts to 76 Nm (56 ft-lb) as shown in [Figure 4](#).

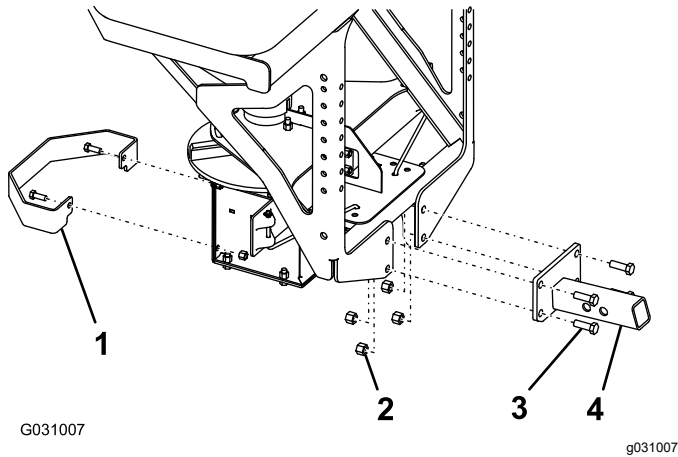


Figure 4

- | | |
|-----------------------|------------------------|
| 1. Spinner guard | 3. Bolt (1/2 inch) |
| 2. Locknut (1/2 inch) | 4. Slide-in attachment |

2. Mount the spinner guard to the spreader using the 2 existing bolts (3/8 inch) and locknuts (3/8 inch) and torque the bolts to 27 Nm (19.7 ft-lb) as shown in [Figure 4](#).

Mounting the Spreader with the Slide-In Attachment

1. Attach the D-ring end of the ratchet straps to the upper holes on the outside of the spreader frame using a bolt (1/2 inch), washer (1/2 inch), and locknut (1/2 inch) and torque the bolts to 76 Nm (56 ft-lb) as shown in [Figure 5](#).

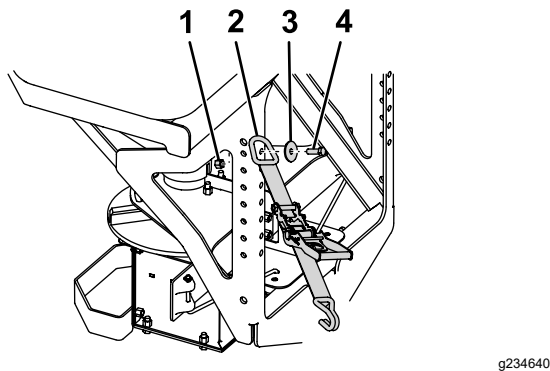


Figure 5

- | | |
|-----------------------|----------------------|
| 1. Locknut (1/2 inch) | 3. Washer (1/2 inch) |
| 2. Ratchet strap | 4. Bolt (1/2 inch) |

2. Slide the hitch on the spreader into the receiver hitch of your vehicle and line up the second hole on the spreader hitch with the hole in the hitch of your vehicle ([Figure 6](#)).

Note: If the spreader contacts the bumper of your vehicle, slide the spreader out and align the first hole of the spreader hitch instead.

⚠ DANGER

The spreader is heavy and could cause serious injury if dropped.

Ensure that your footing is stable, and avoid lifting the spreader on slippery or uneven surfaces.

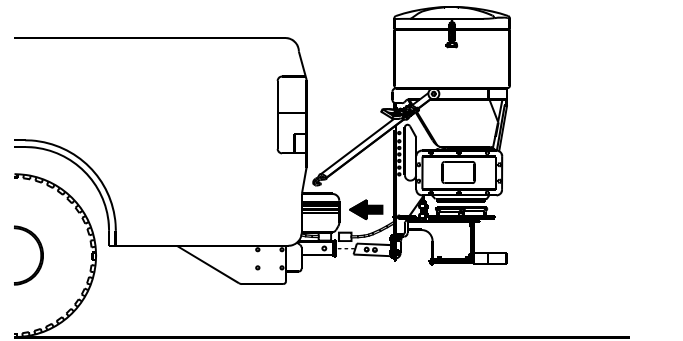


Figure 6

3. Secure the spreader hitch to the vehicle hitch using the clevis pin and cotter hairpin.
4. Attach the stabilizer arms to the spreader frame using 8 bolts (3/8 inch) and 8 locknuts (3/8 inch), and torque the bolts to 27 Nm (19.7 ft-lb) as shown in [Figure 7](#).

Note: Attach the arms so that the stabilizer pads contact your truck bumper.

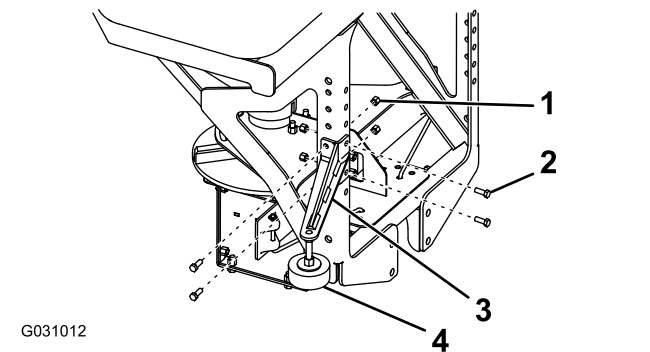


Figure 7

- | | |
|-----------------------|-------------------|
| 1. Locknut (3/8 inch) | 3. Stabilizer arm |
| 2. Bolt (3/8 inch) | 4. Stabilizer pad |

- Rotate the pads on the stabilizer arms until they are tight against your truck bumper and tighten the jam nut to secure them (Figure 7).
- Slide the ends of the ratchet straps between the bumper and tailgate on your vehicle and attach them to a solid point on the truck frame rail.

Note: You may have to drill a hole in the truck frame rail to attach them.
- Plug the spreader harness into the vehicle wire harness at the bumper.

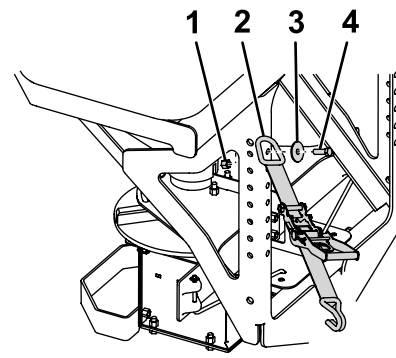


Figure 9

g234640

- | | |
|-----------------------|----------------------|
| 1. Locknut (1/2 inch) | 3. Washer (1/2 inch) |
| 2. Ratchet strap | 4. Bolt (1/2 inch) |

Installing the RT3 Attachment

- Mount the RT3 attachment to the spreader using 4 bolts (1/2 inch) and locknuts (1/2 inch) and torque the bolts to 76 Nm (56 ft-lb) as shown in Figure 8.

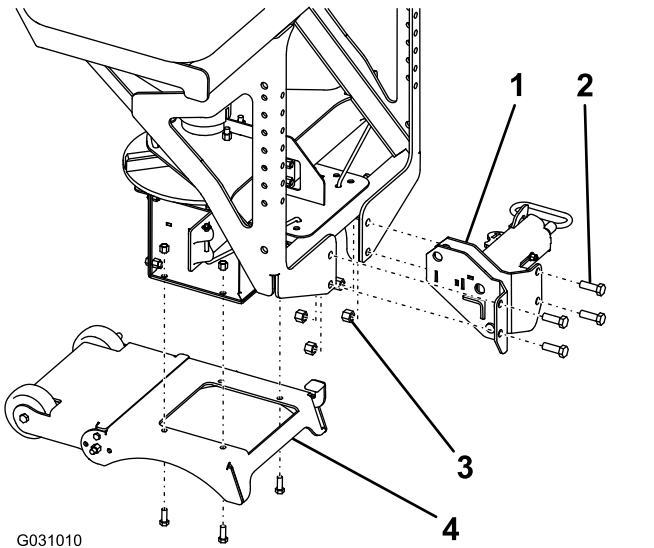


Figure 8

G031010

g031010

- | | |
|--------------------|-----------------------|
| 1. RT3 attachment | 3. Locknut (1/2 inch) |
| 2. Bolt (1/2 inch) | 4. Leg assembly |

- Mount the leg assembly to the spreader using the 4 existing bolts (3/8 inch) and locknuts (3/8 inch) and torque the bolts to 27 Nm (19.7 ft-lb) as shown in Figure 8.

- Slide the RT3 hitch into the receiver hitch of your vehicle and line up the second hole on the spreader hitch with the hole in the hitch of your vehicle (Figure 10).

Note: If the spreader contacts the bumper of your vehicle, slide the spreader out and align the first hole of the spreader hitch instead.

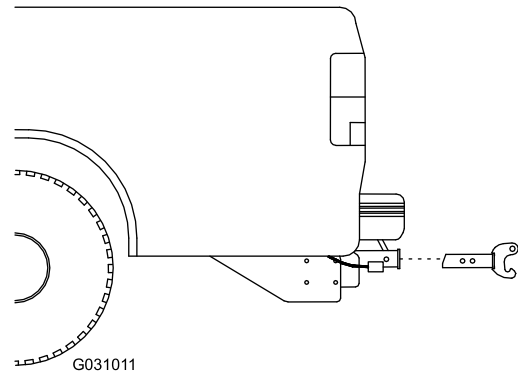


Figure 10

g031011

- Secure the spreader hitch to the vehicle hitch using the clevis pin and cotter hairpin.
- Rotate the locking lever on the RT3 attachment to the LOCK position (Figure 11).

Mounting the Spreader

with the RT3 Attachment

- Attach the D-ring end of the ratchet straps to the upper holes on the outside of the spreader frame using a bolt (1/2 inch), washer (1/2 inch), and locknut (1/2 inch) and torque the bolts to 76 Nm (56 ft-lb) as shown in Figure 9.

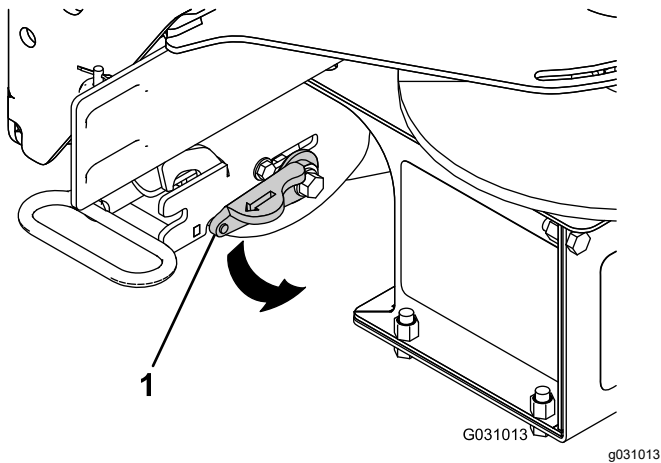


Figure 11

1. Locking lever

5. Grip the spreader firmly and step on the leg assembly to rotate it back until the bottom pin of the RT3 attachment clears the hook on the RT3 hitch (Figure 12).

⚠ DANGER

The spreader is heavy and could cause serious injury if dropped.

Ensure that your footing is stable, and avoid lifting the spreader on slippery or uneven surfaces.

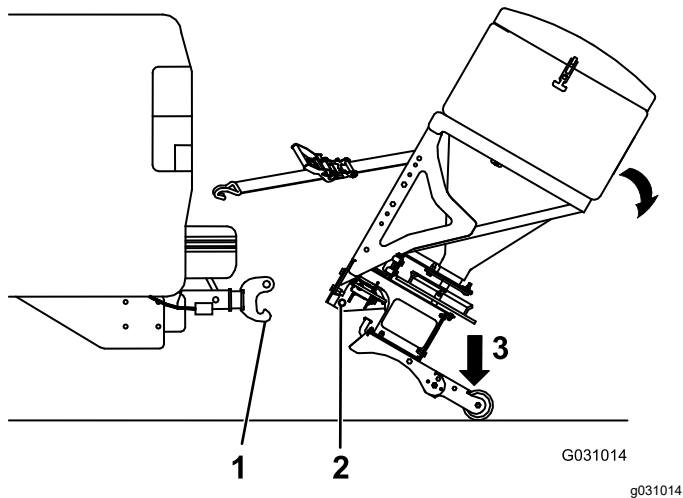


Figure 12

1. RT3 hitch hook
2. Bottom pin
3. Step here

6. Push the spreader forward and lower the bottom pin of the RT3 attachment onto the hitch hook.
7. Tip the spreader upright until the top pin of the RT3 attachment locks into place.

⚠ DANGER

The spreader is heavy and could cause serious injury or property damage if it falls off your vehicle.

Ensure that the top pin of the RT3 attachment is fully locked into place and that the safety latch is down.

8. Attach the stabilizer arms to the spreader frame using 8 bolts (3/8 inch) and 8 locknuts (3/8 inch) and torque the bolts to 27 Nm (19.7 ft-lb) as shown in Figure 7.

Note: Attach the arms so that the stabilizer pads contact your truck bumper.

9. Rotate the pads on the stabilizer arms until they are tight against your truck bumper and tighten the jam nut to secure them (Figure 7).
10. Slide the ends of the ratchet straps between the bumper and tailgate on your vehicle and attach them to a solid point on the truck frame rail.

Note: You may have to drill a hole in the truck frame rail to attach them.

11. Step on the leg-assembly wheels to pivot them and stow them under the leg assembly (Figure 13).

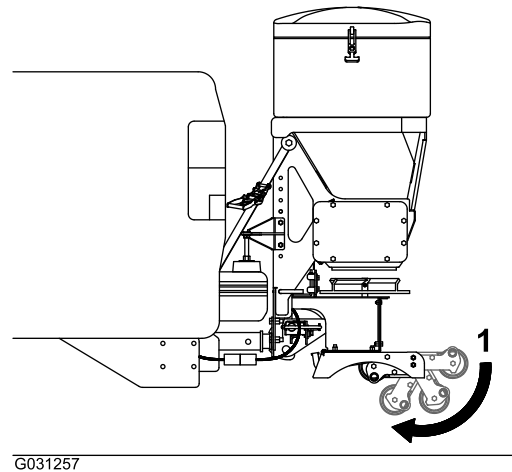


Figure 13

1. Leg-assembly wheels

12. Plug the spreader harness into the vehicle wire harness at the bumper.

Installing the Spreader Controller

Mount the controller in the cab where it does not interfere with vehicle operation or visibility.

Important: Do not mount the controller in a location that vehicle occupants could contact it during a crash.

1. Attach the mounting bracket to the vehicle using 2 sheet-metal screws (Figure 14).

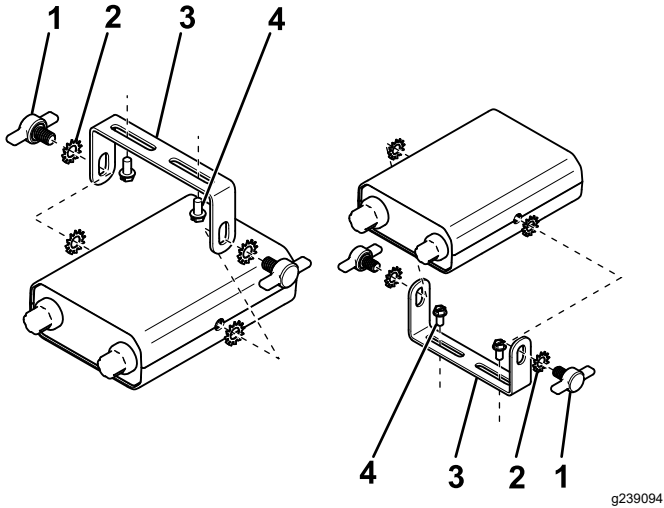


Figure 14

- | | |
|----------------|----------------------|
| 1. Thumb screw | 3. Mounting bracket |
| 2. Star washer | 4. Sheet-metal screw |

2. Attach the controller to the mounting bracket using 4 star washers and 2 thumb screws (Figure 14).

Note: Position the controller screen so that it is clearly visible to the driver.

3. Connect the wire harness controller connectors to the controller (Figure 15).

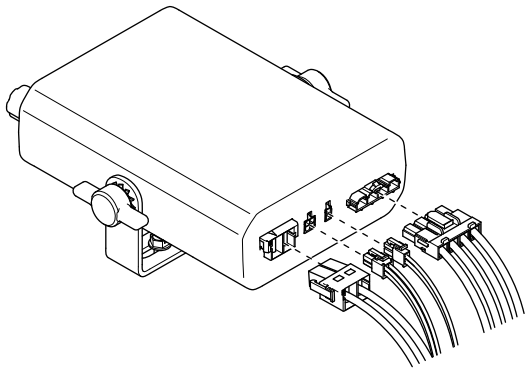


Figure 15

Product Overview

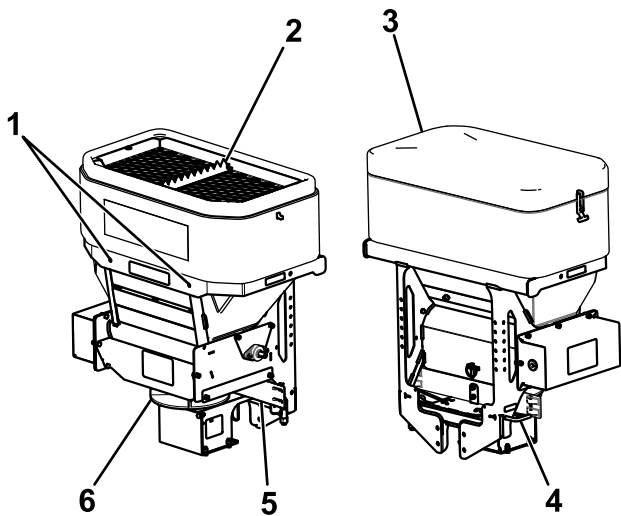


Figure 16

g186465

- | | |
|-----------------|-----------------------|
| 1. Lift points | 4. Spinner spring pin |
| 2. Bag splitter | 5. Material deflector |
| 3. Hopper cover | 6. Spinner |

Controls

Become familiar with all the controls before you operate the spreader.

Spreader Controller

The spreader controller lets you operate your spreader and displays information about your machine.

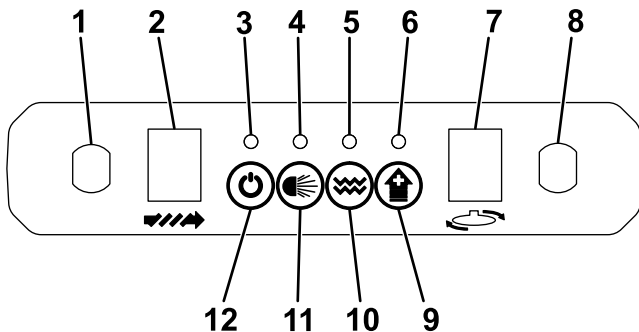


Figure 17

g239095

- | | |
|-----------------------|--------------------------|
| 1. Feed speed dial | 7. Spinner speed display |
| 2. Feed speed display | 8. Spinner speed dial |
| 3. Power LED | 9. Blast button |
| 4. Light LED | 10. Vibrator button |
| 5. Vibrator LED | 11. Light button |
| 6. Blast LED | 12. Power button |

- Feed speed dial—increases the feeder motor speed when turned clockwise, and decreases the feeder motor speed when turned counterclockwise

- Feed speed display—shows the feeder motor speed
- Power LED—when green, it indicates that the controller is on or the motors are running. When amber, it indicates that the spreader is clearing a jam. When flashing red, it indicates that the spreader is jammed or has been disconnected. The speed display for the jammed motor flashes to indicate where the jam is.
- Light LED—indicates that the optional rear lights are on
- Vibrator LED—indicates that the optional vibrator is enabled. It blinks while the optional vibrator is running.
- Blast LED—indicates that the Blast function is being used
- Spinner speed display—shows the spinner motor speed
- Spinner speed dial—increases the spinner motor speed when turned clockwise, and decreases the spinner motor speed when turned counterclockwise
- Power button—turns the spreader controller and motors on or off. If the controller is not active, pressing the button turns it on. If the controller is active, pressing the button starts the spinner and feeder motors and the vibrator (if enabled). If the spinner and feeder motors are on, pressing the button turns them off. Holding the button for 3 seconds turns off the motors and controller.
- Light button—turns the optional rear lights on or off
- Vibrator button—switches the optional vibrator on or off when the feeder motor is on
- Blast button—momentarily sends full power to the spinner and feeder motors as long as it is pressed

Material Deflector

The material deflector controls the spread of materials; you can adjust the controls to provide different spread patterns; refer to [Adjusting the Material Deflectors \(page 18\)](#).

Specifications

Note: Specifications and design are subject to change without notice.

Hopper height	66 cm (26 inches)
Hopper width	91 cm (36 inches)
Hopper depth	53 cm (21 inches)
Spreader weight (empty)	100 kg (220 lb)
Capacity	0.3 m ³ (11 ft ³)

Operation

Note: Determine the left and right sides of the machine from the normal operating position.

Mounting the Spreader Equipped with the Slide-In Attachment

1. Ensure that the spreader controller is off.
2. Slide the hitch of the spreader into the receiver hitch of your vehicle and line up the second hole on the spreader hitch with the hole in the hitch of your vehicle (Figure 18).

Note: If the spreader contacts the bumper of your vehicle, slide the spreader out and align the first hole of the spreader hitch instead.

⚠ DANGER

The spreader is heavy and could cause serious injury if dropped.

Ensure that your footing is stable, and avoid lifting the spreader on slippery or uneven surfaces.

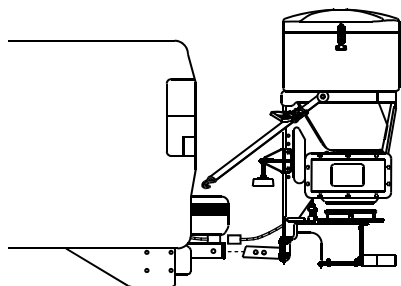


Figure 18

g186467

3. Secure the spreader hitch to the vehicle hitch using the clevis pin and cotter hairpin.
4. Rotate the pads on the stabilizer arms until they are tight against your truck bumper and tighten the jam nut to secure them.
5. Slide the ends of the ratchet straps between the bumper and tailgate on your vehicle and attach them to a solid point on the truck frame rail.
6. Remove the weather caps from both the vehicle and spreader wire harnesses, and plug the spreader harness into the vehicle wire harness.

Removing the Spreader Equipped with the Slide-In Attachment

1. Ensure that the spreader controller is off.
2. Unplug the spreader wire harness from the vehicle wire harness and attach the weather caps to each end.
3. Loosen the ratchet straps and stabilizer arms.
4. Remove the cotter hairpin and clevis pin from the vehicle hitch.
5. Slide the spreader out of the receiver hitch of your vehicle (Figure 19).

⚠ DANGER

The spreader is heavy and could cause serious injury if dropped.

Ensure that your footing is stable, and avoid lifting the spreader on slippery or uneven surfaces.

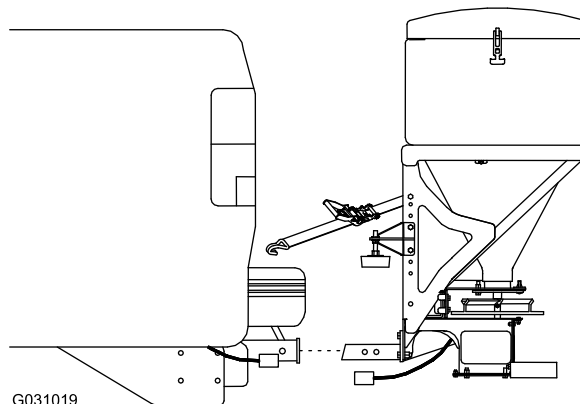


Figure 19

G031019

g031019

6. Move the spreader to your storage area.

Mounting the Spreader

Equipped with the RT3 Attachment

1. Ensure that the spreader controller is off.
2. Rotate the locking lever on the RT3 attachment to the LOCK position (Figure 20).

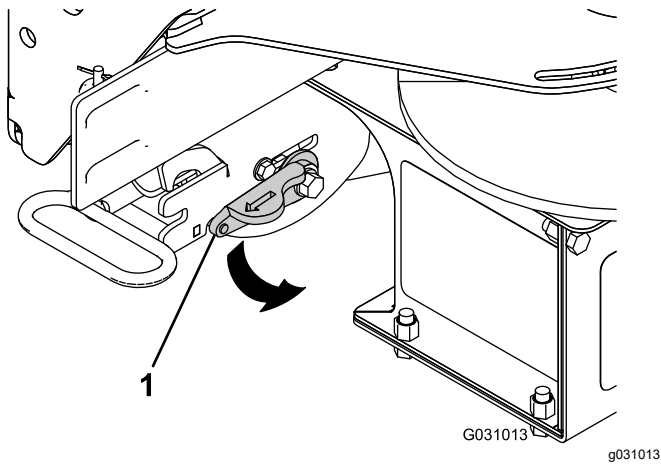


Figure 20

1. Locking lever

3. Grip the spreader firmly and step on the leg assembly to rotate it back until the bottom pin of the RT3 attachment clears the hook on the RT3 hitch (Figure 21).

⚠ DANGER

The spreader is heavy and could cause serious injury if dropped.

Ensure that your footing is stable, and avoid lifting the spreader on slippery or uneven surfaces.

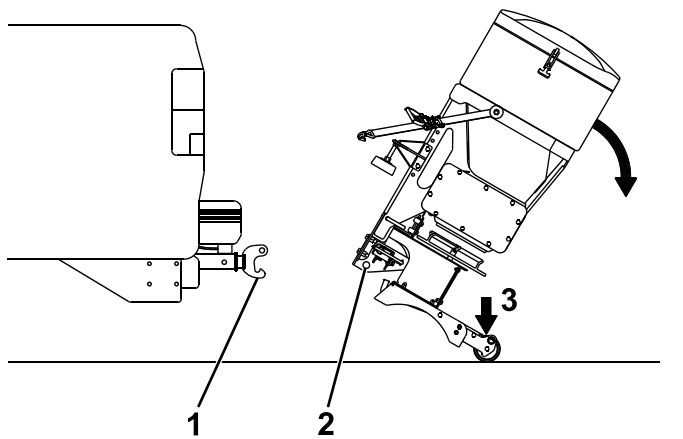


Figure 21

1. RT3 hitch hook
2. Bottom pin
3. Step here

4. Push the spreader forward and lower the bottom pin of the RT3 attachment onto the hitch hook.
5. Tip the spreader upright until the top pin of the RT3 attachment locks into place.

⚠ DANGER

The spreader is heavy and could cause serious injury or property damage if it falls off your vehicle.

Ensure that the top pin of the RT3 attachment is fully locked into place and that the safety latch is down.

6. Rotate the pads on the stabilizer arms until they are tight against your truck bumper and tighten the jam nut to secure them.
7. Slide the ends of the ratchet straps between the bumper and tailgate on your vehicle and attach them to a solid point on the truck frame rail.
8. Step on the leg-assembly wheels to pivot them and stow them under the leg assembly (Figure 22).

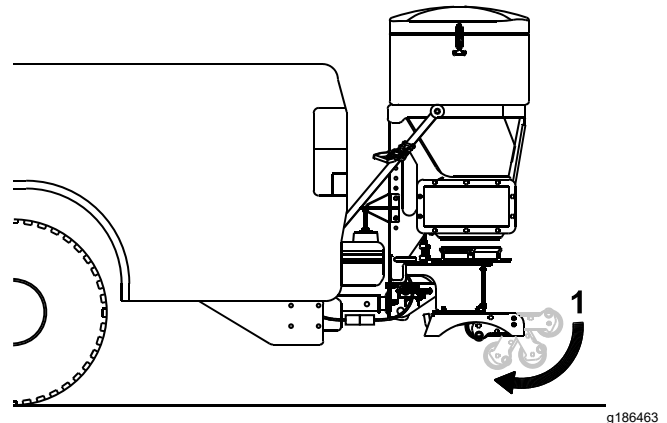


Figure 22

1. Leg-assembly wheels

9. Remove the weather caps from both the vehicle and spreader wire harnesses, and plug the spreader harness into the vehicle wire harness.

Removing the Spreader

Equipped with the RT3 Attachment

1. Ensure that the spreader controller is off.
2. Unplug the spreader wire harness from the vehicle wire harness and attach the weather caps to each end.
3. Pivot the leg-assembly wheels from under the spreader (Figure 23).

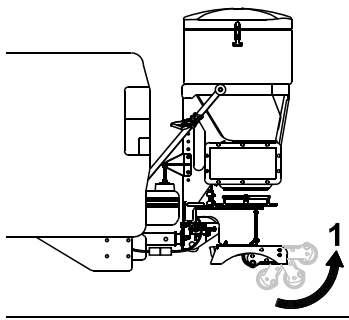


Figure 23

g186468

1. Leg-assembly wheels

4. Loosen the ratchet straps and stabilizer arms.
5. Rotate the locking lever on the RT3 attachment to the UNLOCK position (Figure 24).

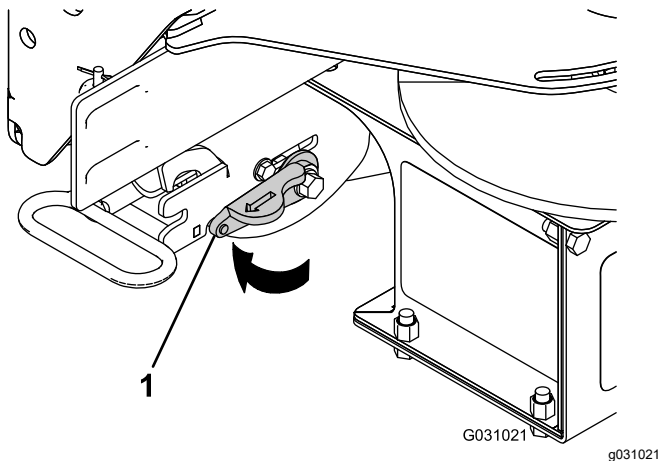


Figure 24

G031021 g031021

1. Locking lever

6. Tilt the spreader down to release the top pin of the RT3 attachment (Figure 25).

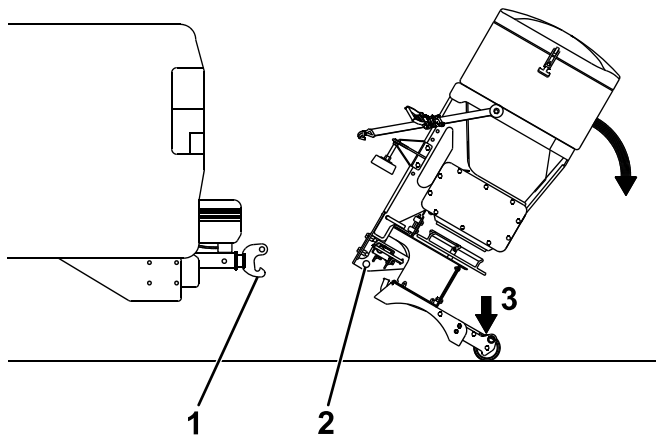


Figure 25

g186469

1. RT3 hitch hook
2. Bottom pin
3. Step here

7. Grip the spreader firmly and step on the leg assembly to rotate it back until the bottom pin of the RT3 attachment clears the hook on the RT3 hitch (Figure 25).

⚠ DANGER

The spreader is heavy and could cause serious injury if dropped.

Ensure that your footing is stable, and avoid lifting the spreader on slippery or uneven surfaces.

8. Pull the spreader back and lower it to the ground.
9. Move the spreader to your storage area.

Loading the Spreader

Important: Only use dry sand, salt, or a sand/salt mixture in the spreader. Other materials could cause damage to the machine.

1. Ensure that the spreader is securely mounted to your vehicle and is not over slippery or uneven terrain.
2. Remove the hopper cover and ensure that the top screen is installed and closed.
3. Determine the amount of material that you can safely transport in your spreader; refer to [Specifications \(page 13\)](#).
4. Fill the hopper using the following methods:
 - If using bagged materials, place the bag on the top screen bag splitter and work it back and forth to split the bag. Continue to move and shake the bag until it is empty.

Note: Have 2 people lift bags weighing more than 18 kg (40 lb).

Note: Keep your hands and fingers clear of the bag splitter when loading materials.

- If using dry bulk materials, load the materials into the hopper through the top screen to break up any large, impassable chunks that may clog the spreader.

Operating the Spreader

▲ DANGER

Hands, feet, and clothing can get caught in the moving parts of the spreader and cause serious bodily injury and loss of limbs.

Tie back long hair, remove jewelry, and keep your hands, feet, and clothing away from the moving spinner and attachment points.

▲ CAUTION

The spreader throws material at a high speed that could cause minor injuries to bystanders.

Bystanders should stay a minimum of 7.6 m (25 ft) away from operating spreaders.

1. Start the vehicle.
2. Press the Power button to turn on the spreader controller.
3. Press the Power button a second time to activate the spreader.

Note: Always check for bystanders before starting the spreader.

4. Use the dials to set your desired spinner and feeder speeds.

Note: The spinner speed determines how quickly the material is spread as well as how far it is thrown. The feeder speed determines how much material is distributed.

5. While spreading, you can press the Blast button to momentarily increase the speed of the spinner and feeder motors.
6. Press the Power button when you are finished spreading to stop the spreader.
7. Press and hold the Power button for 3 seconds or turn off your vehicle to turn off the spreader controller.

Freeing a Clog

The red LED on the spreader controller illuminates when debris gets wedged in the spreader and the controller is overloaded. If the clog is not cleared automatically, disconnect the spreader wire harness and manually free the clog.

Unloading the Spreader

1. Position the spreader in the area where you want to deposit the material.

2. Ensure that the spreader controller is in the OFF position, and unplug the spreader wire harness from the vehicle wire harness.
3. Pull the spinner spring pin outward and lock it into the keeper slot (Figure 26).

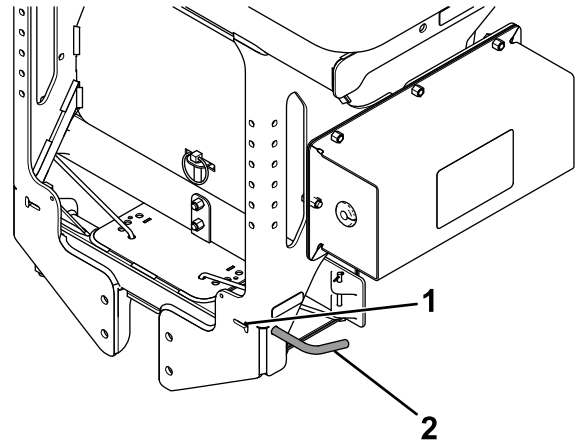


Figure 26

g186475

1. Keeper slot
2. Spinner spring pin

4. Swing the spinner assembly free from the spreader (Figure 27).

Note: Do not move the vehicle when the spinner assembly is swung out.

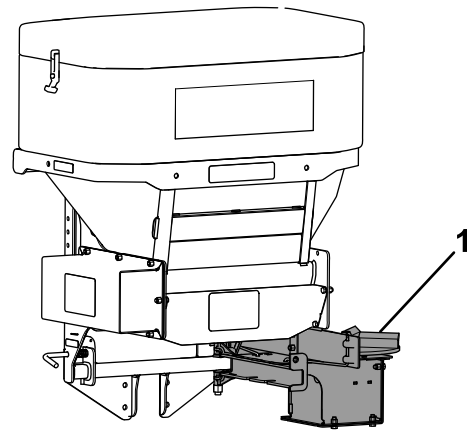


Figure 27

g186470

1. Spinner assembly

5. Connect the spreader wire harness to the vehicle wire harness.
6. Turn on the spreader controller and run the spreader until the hopper is empty.

⚠ CAUTION

The spreader throws material at a high speed that could cause minor injuries to bystanders.

Bystanders should stay a minimum of 7.6 m (25 ft) away from operating spreaders.

7. Once the hopper is empty, turn off the spreader controller.
8. Swing the spinner assembly back into place and release the spinner spring pin.

Adjusting the Material Deflectors

You can adjust the material deflectors by inserting the deflector pins into the staggered holes near the spinner (Figure 28).

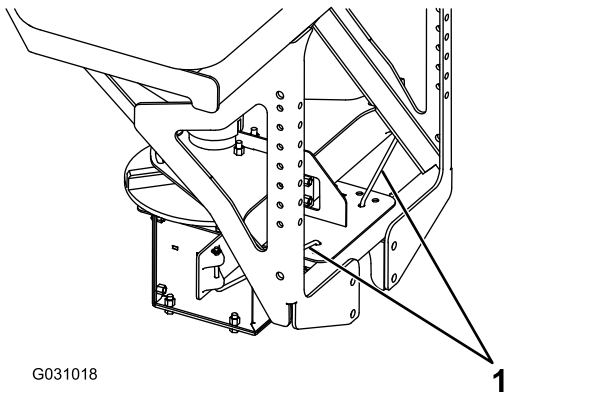


Figure 28

1. Material deflector pins

You can adjust the spread pattern by positioning the deflectors as shown in Figure 29.

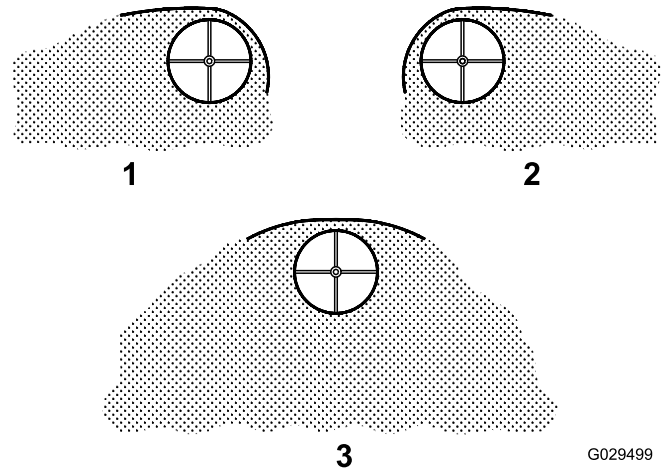


Figure 29
Deflection Settings

1. Driver side open
2. Passenger side open
3. Both sides open

Adjusting the Rubber Flaps

The rubber flaps on the spreader wear down over time and must be adjusted.

1. Ensure that the spreader controller is in the OFF position, and unplug the spreader wire harness from the vehicle wire harness.
2. Remove the hopper cover and top screen.
3. Loosen the bolts securing the rubber flaps and slide them down until at least 32 mm (1-1/4 inches) of the flap sticks out past the metal plate (Figure 30).

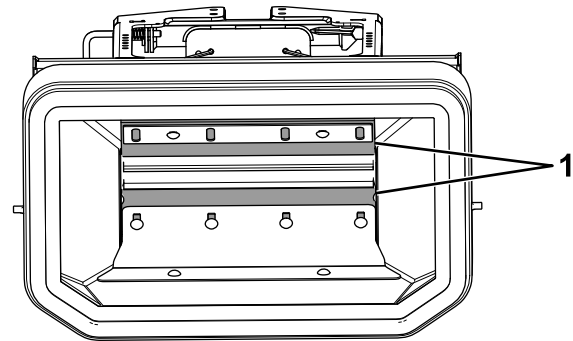


Figure 30

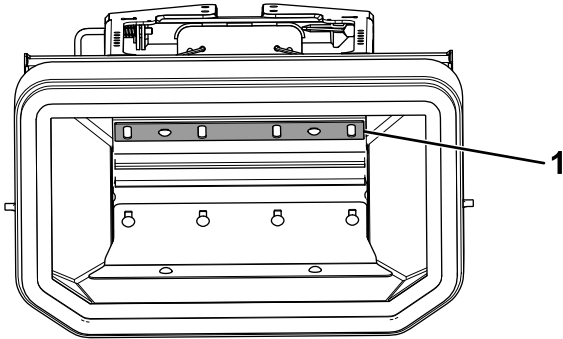
1. Rubber flaps

4. Tighten the loosened bolts.
5. Install the previously removed top screen and hopper cover.

Adjusting the Spreader Vibration

1. Ensure that the spreader controller is in the OFF position, and unplug the spreader wire harness from the vehicle wire harness.
2. Remove the hopper cover and top screen.
3. Loosen the vibration tray bolts, and move the plate to the desired position (Figure 31).

Note: Moving the plate down increases the vibration of the spreader. Moving the plate up decreases the vibration of the spreader.



g186473

Figure 31

1. Plate

-
4. Tighten the loosened bolts.
 5. Install the previously removed top screen and hopper cover.

Operating Tips

- Know the area in which you are working; hidden obstructions such as curbs, sidewalks, manhole covers, and pipes can damage your spreader or vehicle.
- Do not let the ice build up; always start as soon as possible.
- Always wear your seatbelt when spreading.
- Always remember to spread at a safe speed. Spreading faster can be hard on your vehicle as its load is greatly increased.
- Never ride on or put body parts into the spreader while servicing or operating it.

Maintenance

▲ WARNING

Failure to properly maintain the machine could result in premature failure of machine systems causing possible harm to you or bystanders.

Keep the machine well maintained and in good working order as indicated in these instructions.

Note: Determine the left and right sides of the machine from the normal operating position.

Recommended Maintenance Schedule(s)

Maintenance Service Interval	Maintenance Procedure
Before each use or daily	<ul style="list-style-type: none">• Check the ratchet straps and tighten as necessary.
Every 20 hours	<ul style="list-style-type: none">• Clean the chute of any buildup.• Grease the bearings.• Tighten the hardware.
Before storage	<ul style="list-style-type: none">• Unload the spreader.• Clean and grease all of the bearings.

Lubrication

Greasing the Machine

Every 20 hours—Grease the bearings.

Grease all of the bearings with a No. 2 lithium grease.

Storage

1. Unload the spreader; refer to [Unloading the Spreader \(page 17\)](#).
2. Remove the spreader from the vehicle using the lift handles; refer to [Product Overview \(page 12\)](#).
3. Wash and rinse the entire machine.
4. Clean and grease all the bearings.
5. Clean all exposed connectors and apply dielectric grease to them.
6. Remove the controller from the utility vehicle and store it in a clean, dry place.

Troubleshooting

Problem	Possible Cause	Corrective Action
The controller has no power.	<ol style="list-style-type: none"> 1. The spade connector is not connected to the ignition switch power source. 2. The the ignition switch, battery, or ground connections are corroded. 3. The vehicle side circuit fuse, 70 A in-line fuse, or 5 A in-line fuse in the vehicle side harness is bad. 4. The controller is not plugged into the wire harness. 	<ol style="list-style-type: none"> 1. Connect the spade connector to the ignition switch power source. 2. Clean the ignition switch, battery, and ground connections. 3. Replace the fuses. 4. Plug in the controller.
The spinner motor does not work or the Power LED is red.	<ol style="list-style-type: none"> 1. The spreader and vehicle wire harnesses are not connected. 2. The controller is not plugged into the wire harness. 3. The spinner motor is not connected to the spreader side harness. 	<ol style="list-style-type: none"> 1. Connect the wire harnesses. 2. Plug in the controller. 3. Connect the wire harnesses.
The feeder motor does not work.	<ol style="list-style-type: none"> 1. The spreader and vehicle wire harnesses are not connected. 2. The controller is not plugged into the vehicle wire harness. 3. The feeder motor is not connected to the spreader wire harness. 	<ol style="list-style-type: none"> 1. Connect the wire harnesses. 2. Plug in the controller. 3. Connect the wire harnesses.
The Power LED is flashing red and the feed speed display is flashing.	<ol style="list-style-type: none"> 1. The feed motor is jammed. 	<ol style="list-style-type: none"> 1. Refer to the Freeing a Clog section.
The Power LED is flashing red and the spinner speed display is flashing.	<ol style="list-style-type: none"> 1. The spinner motor is jammed 	<ol style="list-style-type: none"> 1. Refer to the Freeing a Clog section.
The spinner motor works but the spinner and auger are not turning.	<ol style="list-style-type: none"> 1. The connection between the auger and spinner and the motor shaft is bad. 2. The connection between the motor shaft and the motor hub is bad. 	<ol style="list-style-type: none"> 1. Contact your Authorized Service Dealer. 2. Contact your Authorized Service Dealer.

Notes:

Notes:

BOSS

S N O W P L O W