



P.O. Box 787
Iron Mountain, MI 49801
United States

Owner's Manual

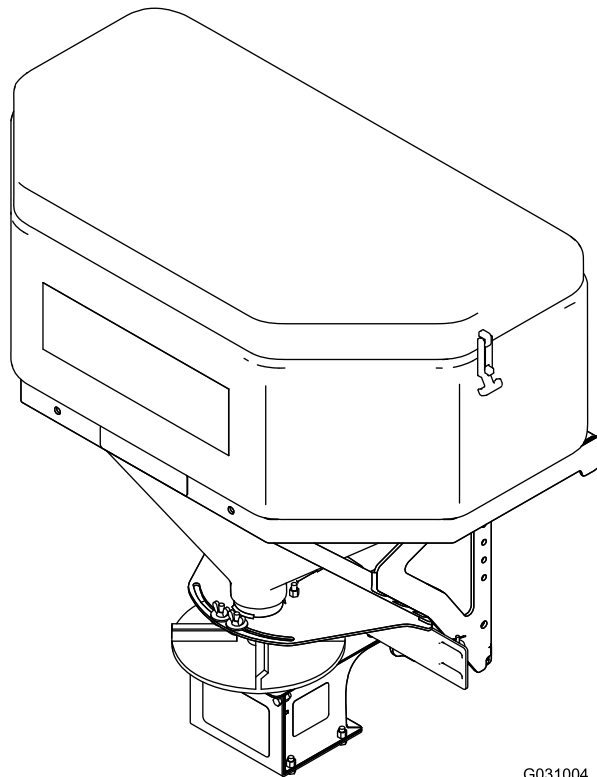
TGS 300, 600, and 1100 Tailgate Spreaders

Part No. TGS11300—Serial No. 402100000 and Up

Part No. TGS06000—Serial No. 400000000 and Up

Part No. TGS11000—Serial No. 400000000 and Up

Part No. TGS11087—Serial No. 400000000 and Up



G031004



This product complies with all relevant European directives; for details, please see the separate product specific Declaration of Conformity (DOC) sheet.

BOSS Products limited consumer warranty and BOSS Products commercial warranty policies are located at www.bossplow.com.

Patent www.ttcopats.com.

⚠ WARNING

**CALIFORNIA
Proposition 65 Warning**

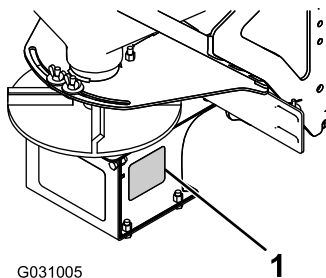
Use of this product may cause exposure to chemicals known to the State of California to cause cancer, birth defects, or other reproductive harm.

Introduction

Read this information carefully to learn how to operate and maintain your product properly and to avoid injury and product damage. You are responsible for operating the product properly and safely.

You may contact BOSS directly at www.bossplow.com for product and accessory information, help finding a dealer, or to register your product.

Whenever you need service, genuine BOSS parts, or additional information, contact an Authorized BOSS Dealer or BOSS Technical Service (1-800-286-4155) and have the model and serial numbers of your product ready. **Figure 1** identifies the location of the model and serial numbers on the product. Write the numbers in the space provided.



G031005

Figure 1

G031005

1. Serial number location

Model No. _____

Serial No. _____

This manual identifies potential hazards and has safety messages identified by the safety alert symbol (**Figure 2**), which signals a hazard that may cause serious injury or death if you do not follow the recommended precautions.



Figure 2

G000502

1. Safety-alert symbol

This manual uses 2 words to highlight information. **Important** calls attention to special mechanical information and **Note** emphasizes general information worthy of special attention.

Contents

Safety	3
Preparation	3
Operation	3
Safety and Instructional Decals	4
Setup	5
Installing the Wire Harness	5
Installing the Slide-In Attachment	5
Mounting the Spreader with the Slide-In Attachment	6
Installing the RT3 Attachment	7
Mounting the Spreader with the RT3 Attachment	7
Installing the Spreader Controller	9
Product Overview	10
Controls	10
Specifications	11
Operation	11
Mounting the Spreader	11
Removing the Spreader	12
Mounting the Spreader	12
Removing the Spreader	13
Loading the Spreader	14
Operating the Spreader	14
Freeing a Clog	15
Unloading the Spreader	15
Adjusting the Material Deflectors	15
Operating Tips	15
Troubleshooting	16

Safety

Improperly using and maintaining the equipment can result in injury. To reduce the potential for injury, comply with these safety instructions and always pay attention to the safety-alert symbol **A**, which means: **Caution, Warning, or Danger**—personal safety instruction. Failure to comply with the instruction may result in personal injury or death.

Preparation

- Ensure that only trained personnel install and perform maintenance on the equipment.
- Always wear appropriate personal protective equipment when loading, unloading, and servicing the spreader. Wear substantial, slip-resistant footwear, cold-weather clothing, safety glasses, and dust protection.
- Ensure that your rearview mirror is in a good operating position.
- Many newer trucks are equipped with air bags. Never disable, remove, or relocate any sensors or other components related to the operation of the air bags.
- TGS 300 spreaders must only be used with a minimum Class II receiver hitch. Do not exceed the vehicle hitch rating.
- The TGS 300 can hold a maximum weight of 91 kg (200 lb) of salt. Do not exceed this weight.
- TGS 600 spreaders with slide-in or RT3 attachments must only be used with a minimum Class III receiver hitch. Do not exceed the vehicle hitch rating.
- TGS 1100 spreaders with the slide-in or RT3 attachments must only be used with a minimum Class IV receiver hitch. Do not exceed the vehicle hitch rating.
- The TGS 600 can hold a maximum weight of 181 kg (400 lb) of salt. Do not exceed this weight.
- The TGS 1100 can hold a maximum weight of 363 kg (800 lb) of salt. Do not exceed this weight.

Operation

- Read the *Owner's Manual* before operating or servicing the spreader.
- Do not operate the machine while ill, tired, or under the influence of alcohol or drugs.
- For vehicle-mounted spreaders, always follow the manufacturer's recommendations for proper parking procedures.
- Always wear your seatbelt while operating a motor vehicle.
- Do not exceed 22.5 km/h (14 mph) while spreading.
- This spreader has an operating sound level below 70 dBA.
- Never put any part of your body between the spreader and the vehicle.
- Overloading the spreader could result in an accident or damage. Never exceed the gross-vehicle-weight rating (GVWR) or the front or rear gross-axle-weight ratings (FGAWR or RGAWR) for the vehicle.
- This spreader is restricted to the use of salt only. Do not run other materials through the spreader.
- Do not attempt to mount or remove the spreader with material in it.
- Turn the spreader off before filling, mounting, removing, servicing, or cleaning it.
- Never operate the spreader within 7.6 m (25 ft) of bystanders.
- Do not climb into or ride on the spreader.
- Keep your hands, feet, and clothing away from moving parts and mounting points.
- Mount the spreader to a vehicle before loading material.
- Install ratchet straps and keep them properly tightened with the slide-in and RT3 attachments.
- When transporting the spreader, ensure that it is properly secured. Instructions are available at www.bossplo.com.
- The slide-in attachment must be fully engaged and pinned into the 5 cm (2 inch) receiver hitch of the vehicle.
- The upper and lower pins of the RT3 attachment must be fully engaged and pinned into the 5 cm (2 inch) receiver hitch of the vehicle.
- Material safety data sheets (MSDS) are available at www.bossplo.com.
- Use a 1/2 ton minimum lifting device to move heavy spreader components.
- Do not store material in the hopper.

Safety and Instructional Decals



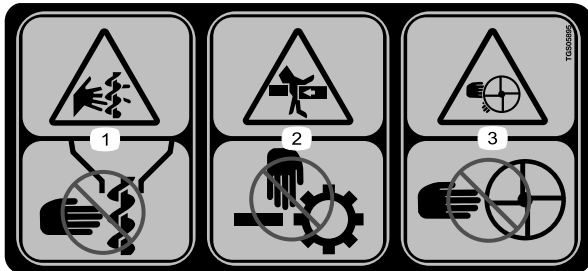
Safety decals and instructions are easily visible to the operator and are located near any area of potential danger. Replace any decal that is damaged or missing.



TGS06269

decaltgs06269b

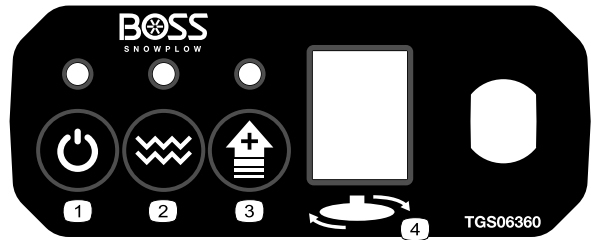
- | | | | |
|--|---|--|---|
| 1. Warning—read the <i>Owner's Manual</i> . | 4. Warning—turn the machine off before filling. | 7. Warning—do not stand or ride on the machine. | 10. Warning—turn the machine off and disconnect the power before servicing the machine. |
| 2. Warning—all operators should be trained before operating the machine. | 5. Warning—empty the hopper and disconnect the power before installing or removing the machine. | 8. Warning—the machine must be installed before filling. | |
| 3. Loss of control hazard—do not overfill the machine. | 6. Thrown object hazard—keep bystanders away from the machine. | 9. Warning—do not store materials in the machine. | |



TGS05895

decaltgs05895b

- | | |
|---|---|
| 1. Cutting/dismemberment hazard; auger—keep fingers and hands clear of the auger. | 3. Cutting/dismemberment hazard; spinner—keep fingers and hands clear of the spinner. |
| 2. Crushing hazard—keep fingers and hands clear of moving parts. | |



MSC06364

(non-replaceable decal)

decaltgs06360

- | | |
|-------------|------------------|
| 1. Power | 3. Blast |
| 2. Vibrator | 4. Spinner speed |

Setup

Note: Either the slide-in or RT3 attachment is required to install this machine. Contact your Authorized BOSS Dealer for more information.

Installing the Wire Harness

⚠ DANGER

Vehicle engines contain moving parts and can become extremely hot, capable of causing severe burns and serious bodily harm.

Shut off the engine and allow it sufficient time to cool down before installing this kit.

⚠ DANGER

Vehicle batteries can cause dangerous electrical shocks that could lead to severe burns or death.

Disconnect your battery before installing this kit.

1. Secure the spreader end of the vehicle wire harness (Figure 3) to the center of the rear vehicle bumper with a cable tie.
2. Route the wire harness along the driver-side frame-rail and into the engine compartment, and secure it with cable ties.

Note: Keep the wire harness away from any hot or moving parts.

3. Insert the controller connectors, spade connector, and ground cable through the firewall and into the vehicle cab, and secure them with cable ties.

Note: Route the controller connectors to the location that you want to install your controller.

4. Connect the black ring connector in the engine compartment to the negative (-) battery terminal (Figure 3).
5. Connect the red ring connector in the engine compartment to the positive (+) battery terminal (Figure 3).
6. Connect the spade connector to an ignition switch power source on the vehicle (Figure 3).
7. Connect the ground cable to the negative (-) battery post or chassis ground (Figure 3).
8. Wrap the excess wire and secure it in the engine compartment with cable ties.

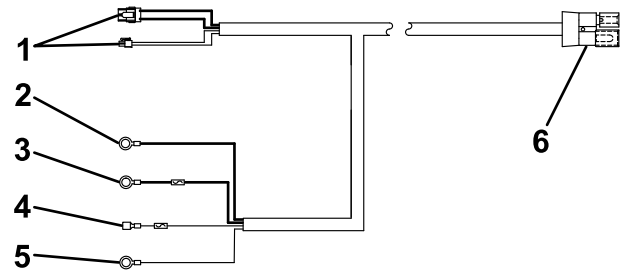


Figure 3

g232908

- | | |
|-------------------------|-----------------------|
| 1. Controller connector | 4. Spade connector |
| 2. Black ring connector | 5. Ground cable |
| 3. Red ring connector | 6. Spreader connector |

Installing the Slide-In Attachment

Installing the Slide-In Attachment for TGS 300

1. Mount the slide-in attachment to the spreader using 4 bolts (1/2 inch) and locknuts (1/2 inch) and torque the bolts to 76 Nm (56 ft-lb) as shown in Figure 4.

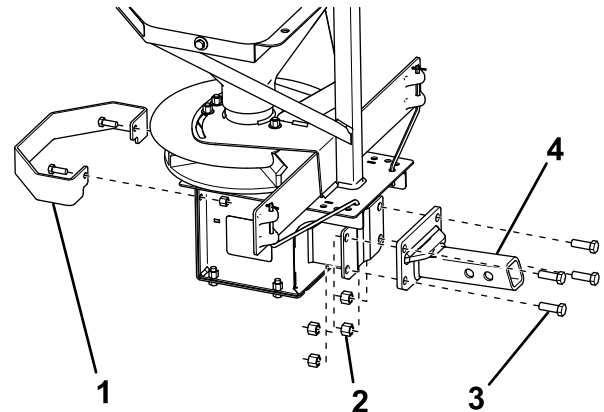


Figure 4

g232358

- | | |
|-----------------------|------------------------|
| 1. Spinner guard | 3. Bolt (1/2 inch) |
| 2. Locknut (1/2 inch) | 4. Slide-in attachment |

2. Mount the spinner guard to the spreader using the 2 existing bolts (3/8 inch) and locknuts (3/8 inch) and torque the bolts to 27 Nm (19.7 ft-lb) as shown in Figure 4.

Installing the Slide-In Attachment for TGS 600 or TGS 1100

1. Mount the slide-in attachment to the spreader using 4 bolts (1/2 inch) and locknuts (1/2 inch) and torque the bolts to 76 Nm (56 ft-lb) as shown in [Figure 5](#).

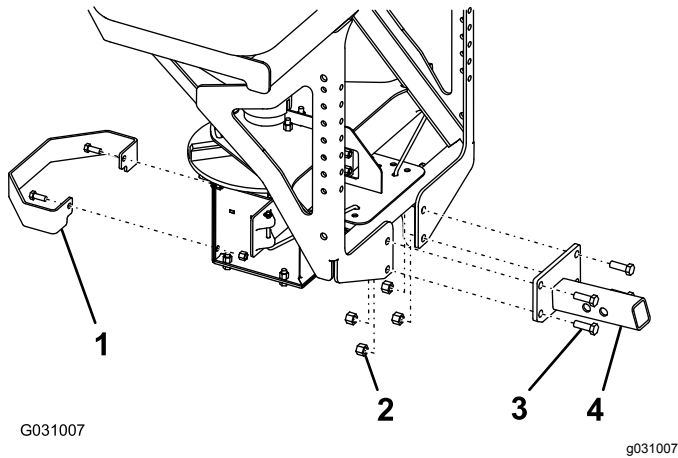


Figure 5

- | | |
|-----------------------|------------------------|
| 1. Spinner guard | 3. Bolt (1/2 inch) |
| 2. Locknut (1/2 inch) | 4. Slide-in attachment |

2. Mount the spinner guard to the spreader using the 2 existing bolts (3/8 inch) and locknuts (3/8 inch) and torque the bolts to 27 Nm (19.7 ft-lb) as shown in [Figure 5](#).

Mounting the Spreader with the Slide-In Attachment

1. Attach the D-ring end of the ratchet straps to the upper holes on the outside of the spreader frame using a bolt (1/2 inch), washer (1/2 inch), and locknut (1/2 inch) and torque the bolts to 76 Nm (56 ft-lb) as shown in [Figure 6](#).

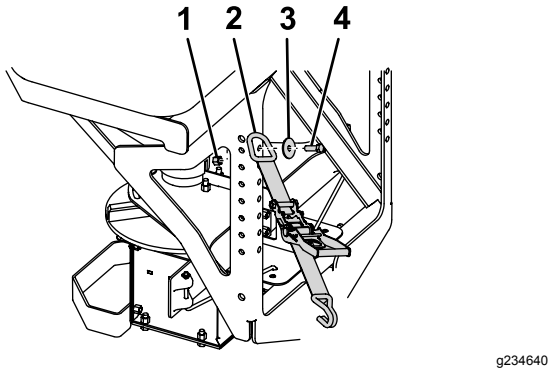


Figure 6

- | | |
|-----------------------|----------------------|
| 1. Locknut (1/2 inch) | 3. Washer (1/2 inch) |
| 2. Ratchet strap | 4. Bolt (1/2 inch) |

2. Slide the hitch on the spreader into the receiver hitch of your vehicle and line up the second hole on the spreader hitch with the hole in the hitch of your vehicle ([Figure 7](#)).

Note: If the spreader contacts the bumper of your vehicle, slide the spreader out and align the first hole of the spreader hitch instead.

⚠ DANGER

The spreader is heavy and could cause serious injury if dropped.

Ensure that your footing is stable, and avoid lifting the spreader on slippery or uneven surfaces.

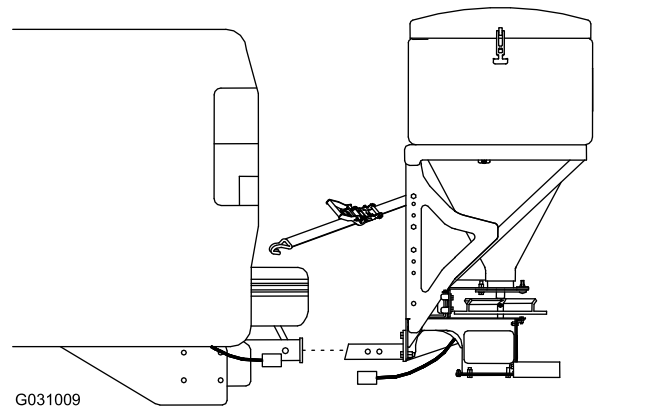


Figure 7

3. Secure the spreader hitch to the vehicle hitch using the clevis pin and cotter hairpin.
4. Attach the stabilizer arms to the spreader frame using 8 bolts (3/8 inch) and 8 locknuts (3/8 inch), and torque the bolts to 27 Nm (19.7 ft-lb) as shown in [Figure 8](#).

Note: Attach the arms so that the stabilizer pads contact your truck bumper.

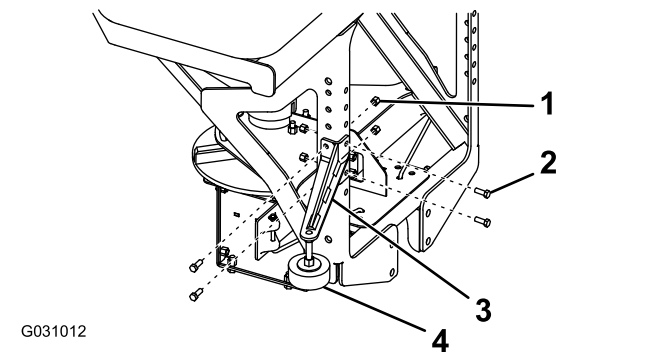


Figure 8

- | | |
|-----------------------|-------------------|
| 1. Locknut (3/8 inch) | 3. Stabilizer arm |
| 2. Bolt (3/8 inch) | 4. Stabilizer pad |

- Rotate the pads on the stabilizer arms until they are tight against your truck bumper and tighten the jam nut to secure them (Figure 8).
- Slide the ends of the ratchet straps between the bumper and tailgate on your vehicle and attach them to a solid point on the truck frame rail.

Note: You may have to drill a hole in the truck frame rail to attach them.
- Plug the spreader harness into the vehicle wire harness at the bumper.

Installing the RT3 Attachment

- Mount the RT3 attachment to the spreader using 4 bolts (1/2 inch) and locknuts (1/2 inch) and torque the bolts to 76 Nm (56 ft-lb) as shown in Figure 9.

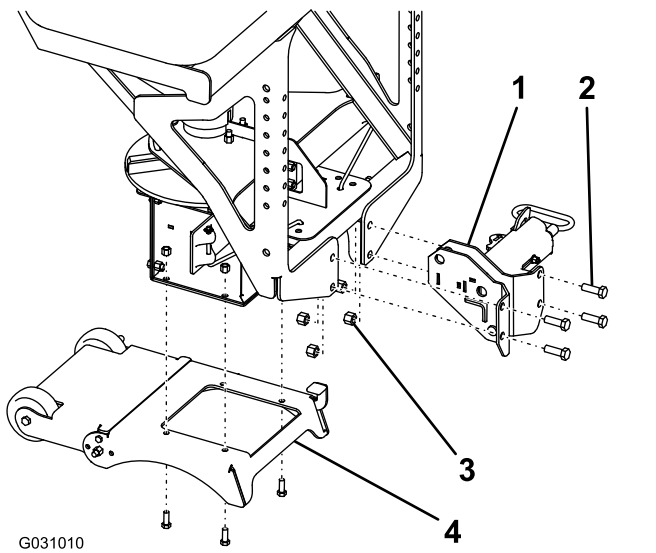


Figure 9

- | | |
|--------------------|-----------------------|
| 1. RT3 attachment | 3. Locknut (1/2 inch) |
| 2. Bolt (1/2 inch) | 4. Leg assembly |

- Mount the leg assembly to the spreader using the 4 existing bolts (3/8 inch) and locknuts (3/8 inch) and torque the bolts to 27 Nm (19.7 ft-lb) as shown in Figure 9.

Mounting the Spreader with the RT3 Attachment

- Attach the D-ring end of the ratchet straps to the upper holes on the outside of the spreader frame using a bolt (1/2 inch), washer (1/2 inch), and locknut (1/2 inch) and torque the bolts to 76 Nm (56 ft-lb) as shown in Figure 10.

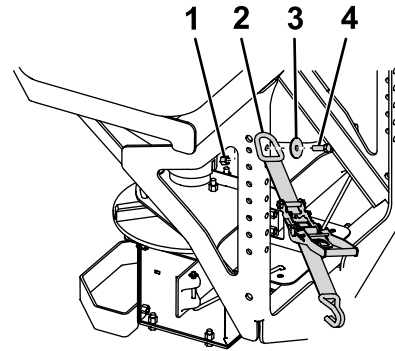


Figure 10

- | | |
|-----------------------|----------------------|
| 1. Locknut (1/2 inch) | 3. Washer (1/2 inch) |
| 2. Ratchet strap | 4. Bolt (1/2 inch) |

- Slide the RT3 hitch into the receiver hitch of your vehicle and line up the second hole on the spreader hitch with the hole in the hitch of your vehicle (Figure 11).

Note: If the spreader contacts the bumper of your vehicle, slide the spreader out and align the first hole of the spreader hitch instead.

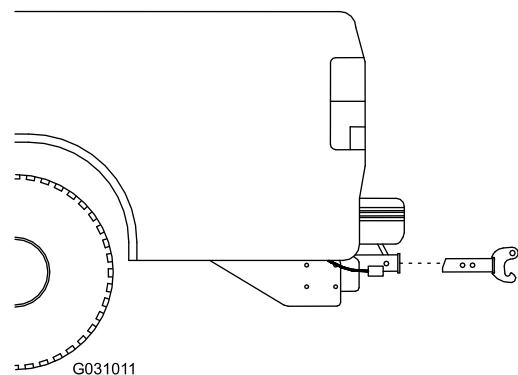


Figure 11

- Secure the spreader hitch to the vehicle hitch using the clevis pin and cotter hairpin.
- Rotate the locking lever on the RT3 attachment to the LOCK position (Figure 12).

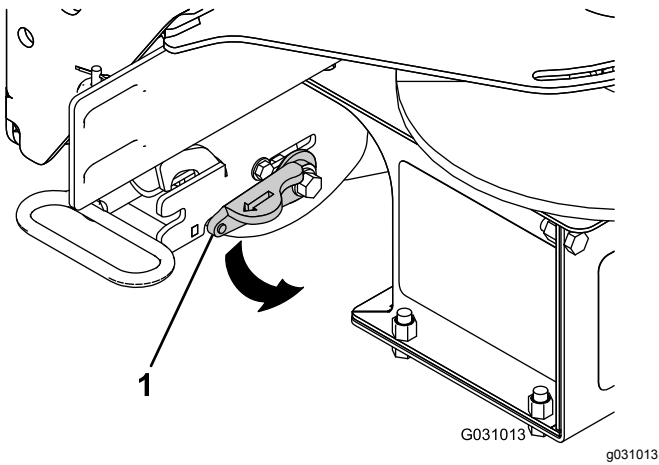


Figure 12

1. Locking lever

5. Grip the spreader firmly and step on the leg assembly to rotate it back until the bottom pin of the RT3 attachment clears the hook on the RT3 hitch (Figure 13).

⚠ DANGER

The spreader is heavy and could cause serious injury if dropped.

Ensure that your footing is stable, and avoid lifting the spreader on slippery or uneven surfaces.

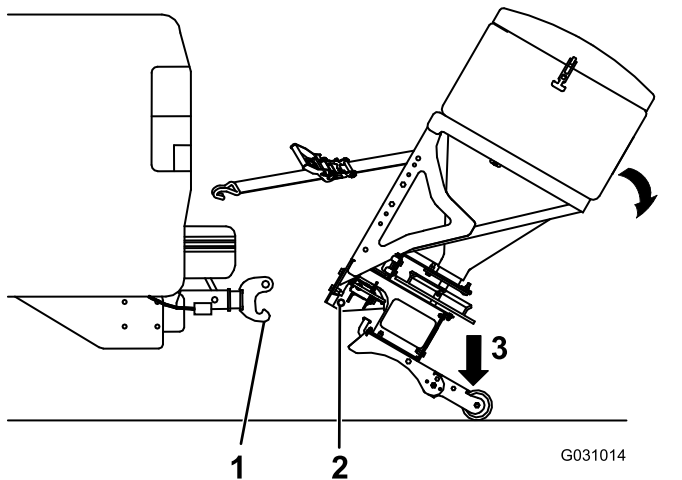


Figure 13

1. RT3 hitch hook
2. Bottom pin
3. Step here

6. Push the spreader forward and lower the bottom pin of the RT3 attachment onto the hitch hook.
7. Tip the spreader upright until the top pin of the RT3 attachment locks into place.

⚠ DANGER

The spreader is heavy and could cause serious injury or property damage if it falls off your vehicle.

Ensure that the top pin of the RT3 attachment is fully locked into place and that the safety latch is down.

8. Attach the stabilizer arms to the spreader frame using 8 bolts (3/8 inch) and 8 locknuts (3/8 inch) and torque the bolts to 27 Nm (19.7 ft-lb) as shown in Figure 8.

Note: Attach the arms so that the stabilizer pads contact your truck bumper.

9. Rotate the pads on the stabilizer arms until they are tight against your truck bumper and tighten the jam nut to secure them (Figure 8).
10. Slide the ends of the ratchet straps between the bumper and tailgate on your vehicle and attach them to a solid point on the truck frame rail.

Note: You may have to drill a hole in the truck frame rail to attach them.

11. Step on the leg-assembly wheels to pivot them and stow them under the leg assembly (Figure 14).

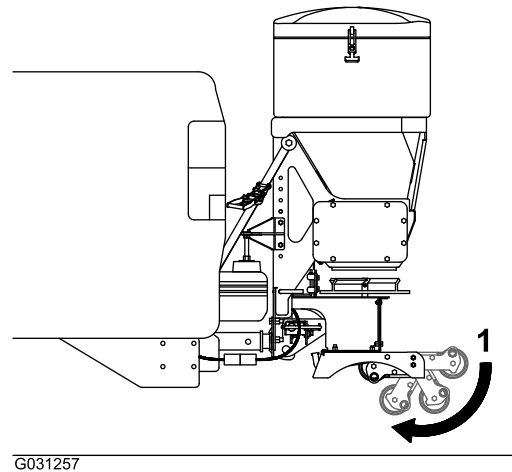


Figure 14

1. Leg-assembly wheels

12. Plug the spreader harness into the vehicle wire harness at the bumper.

Installing the Spreader Controller

Mount the controller in the cab where it does not interfere with vehicle operation or visibility.

Important: Do not mount the controller in a location that vehicle occupants could contact it during a crash.

1. Attach the mounting bracket to the vehicle using 2 sheet-metal screws (Figure 15).

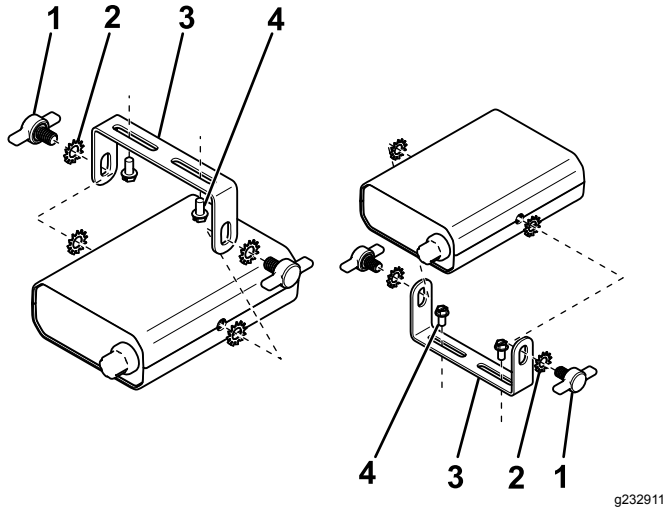


Figure 15

- | | |
|----------------|----------------------|
| 1. Thumb screw | 3. Mounting bracket |
| 2. Star washer | 4. Sheet-metal screw |

2. Attach the controller to the mounting bracket using 4 star washers and 2 thumb screws (Figure 15).

Note: Position the controller screen so that it is clearly visible to the driver.

3. Connect the wire harness controller connectors to the controller (Figure 16).

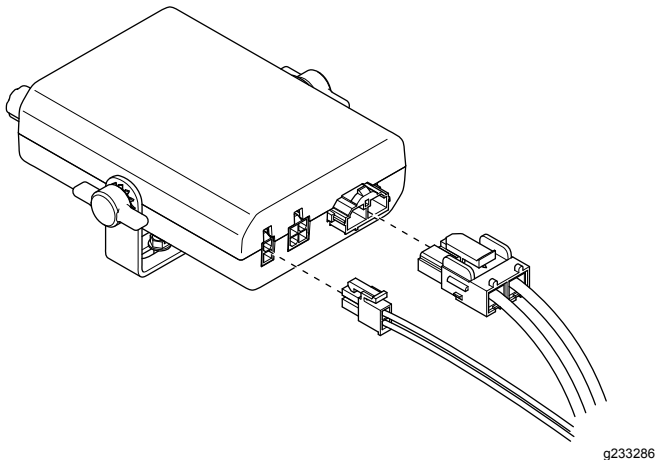


Figure 16

Product Overview

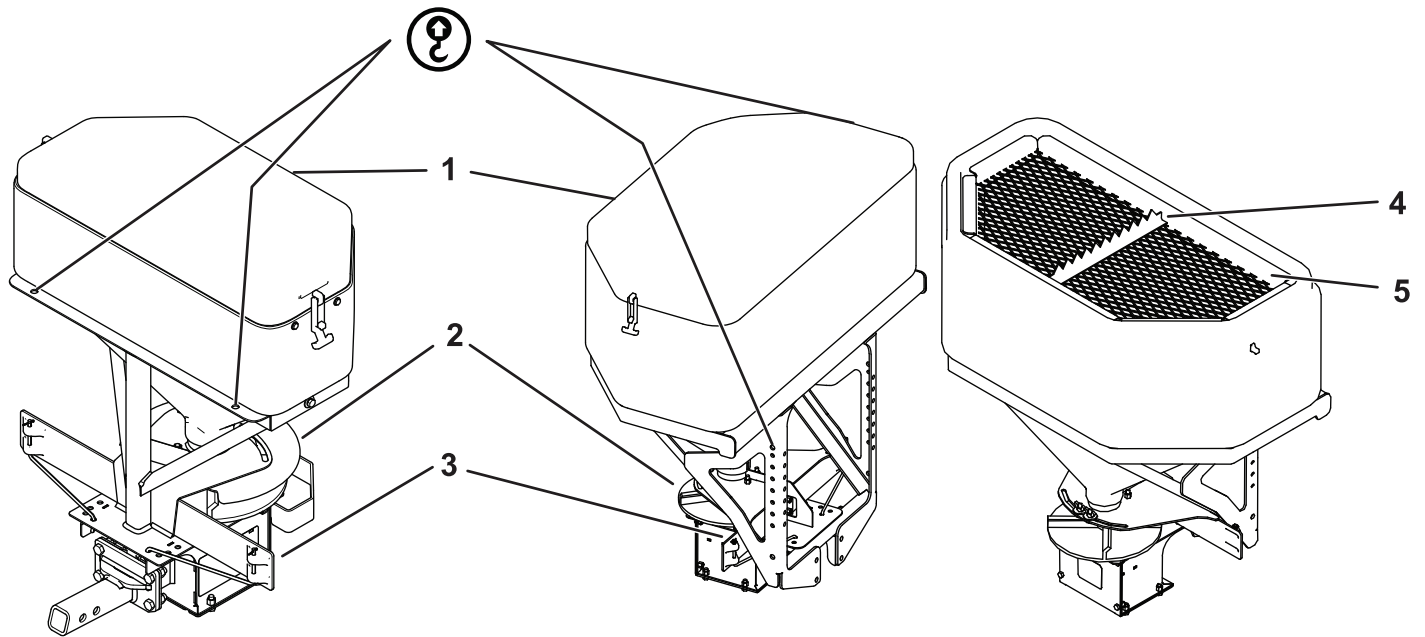


Figure 17

g315083

- | | |
|--|-----------------|
| 1. Hopper cover | 4. Bag splitter |
| 2. Spinner | 5. Top screen |
| 3. Material deflector with adjustment pins | |

Controls

Become familiar with all the controls before you operate the spreader.

Material Deflector

The material deflector controls the spread of materials; you can adjust the controls to provide different spread patterns; refer to [Adjusting the Material Deflectors](#) (page 15).

Spreader Controller

The spreader controller lets you operate your spreader and displays information about your machine.

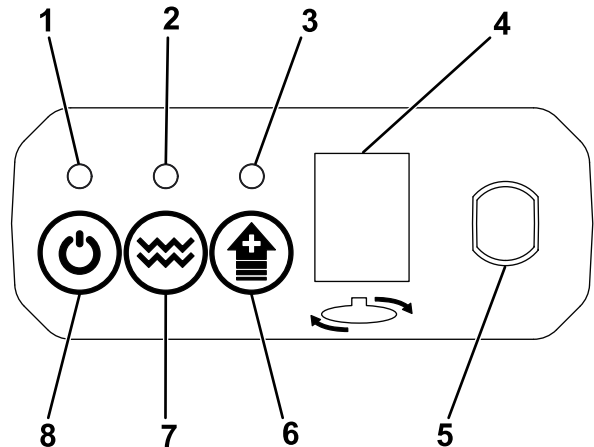


Figure 18

g239569

- | | |
|------------------|--------------------|
| 1. Power LED | 5. Speed dial |
| 2. Vibrator LED | 6. Blast button |
| 3. Blast LED | 7. Vibrator button |
| 4. Speed display | 8. Power button |

- **Power button**—turns the spreader controller and spinner motor on or off. If the controller is not active, pressing the button turns it on. If the controller is active, pressing the button starts the spinner motor and vibrator (if equipped and enabled). If the spinner motor is on, pressing the button turns it off. Holding the button for 3 seconds turns off the spinner motor and controller.

- Vibrator button—switches the optional vibrator on or off when the spinner motor is on
- Blast button—momentarily sends full power to the spinner motor as long as it is pressed
- Speed display—shows the spinner motor speed
- Speed dial—increases the spinner motor speed when turned clockwise, and decreases the spinner motor speed when turned counterclockwise
- Power LED
 - Solid red: low voltage indicator; check the vehicle charging system or battery.
 - Flashing red: the spreader is jammed or is disconnected.
 - Green: the controller is on or the spinner motor is turning.
 - Amber: the spreader is clearing a jam.
- Vibrator LED—indicates that the optional vibrator is enabled. It blinks while the optional vibrator is running.
- Blast LED—indicates that the Blast function is being used

Specifications

Note: Specifications and design are subject to change without notice.

	TGS 300	TGS 600	TGS 1100
Hopper height	53 cm (21-7/8 inches)	65 cm (25.75 inches)	86 cm (34 inches)
Hopper width	74 cm (29 inches)	97 cm (38 inches)	112 cm (44 inches)
Hopper depth	38 cm (15 inches)	53 cm (21 inches)	61 cm (24 inches)
Weight (empty)	31 kg (70 lb)	46 kg (101 lb)	69 kg (152 lb)
Capacity	0.08 m ³ (3 ft ³)	0.2 m ³ (6 ft ³)	0.3 m ³ (11 ft ³)

Operation

Note: Determine the left and right sides of the machine from the normal operating position.

Mounting the Spreader Equipped with the Slide-In Attachment

1. Ensure that the spreader controller is off.
2. Slide the hitch of the spreader into the receiver hitch of your vehicle and line up the second hole on the spreader hitch with the hole in the hitch of your vehicle (Figure 19).

Note: If the spreader contacts the bumper of your vehicle, slide the spreader out and align the first hole of the spreader hitch instead.

▲ DANGER

The spreader is heavy and could cause serious injury if dropped.

Ensure that your footing is stable, and avoid lifting the spreader on slippery or uneven surfaces.

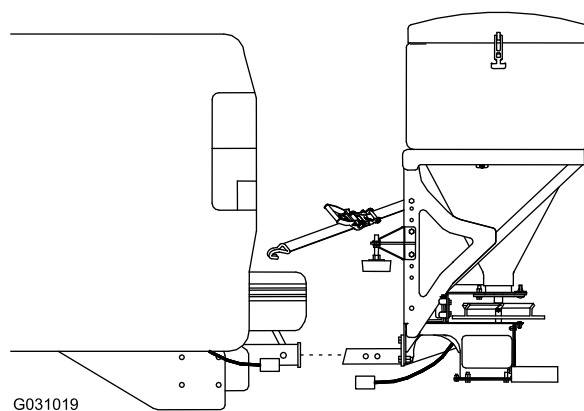


Figure 19

3. Secure the spreader hitch to the vehicle hitch using the clevis pin and cotter hairpin.
4. Rotate the pads on the stabilizer arms until they are tight against your truck bumper and tighten the jam nut to secure them.
5. Slide the ends of the ratchet straps between the bumper and tailgate on your vehicle and attach them to a solid point on the truck frame rail.
6. Remove the weather caps from both the vehicle and spreader wire harnesses, and plug the spreader harness into the vehicle wire harness.

Removing the Spreader

Equipped with the Slide-In Attachment

1. Ensure that the spreader controller is off.
2. Unplug the spreader wire harness from the vehicle wire harness and attach the weather caps to each end.
3. Loosen the ratchet straps and stabilizer arms.
4. Remove the cotter hairpin and clevis pin from the vehicle hitch.
5. Slide the spreader out of the receiver hitch of your vehicle (Figure 20).

⚠ DANGER

The spreader is heavy and could cause serious injury if dropped.

Ensure that your footing is stable, and avoid lifting the spreader on slippery or uneven surfaces.

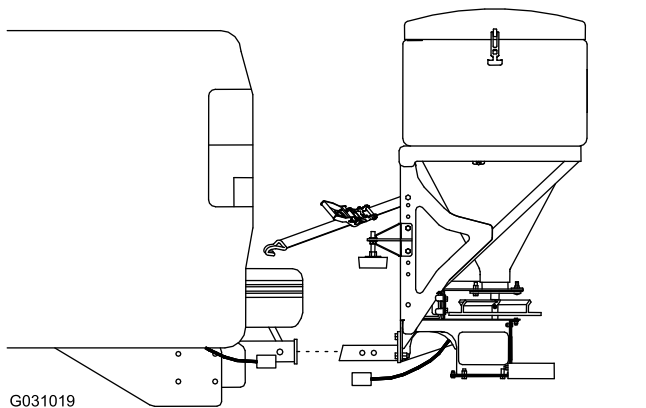


Figure 20

6. Move the spreader to your storage area.

Mounting the Spreader

Equipped with the RT3 Attachment

1. Ensure that the spreader controller is off.
2. Rotate the locking lever on the RT3 attachment to the Lock position (Figure 21).

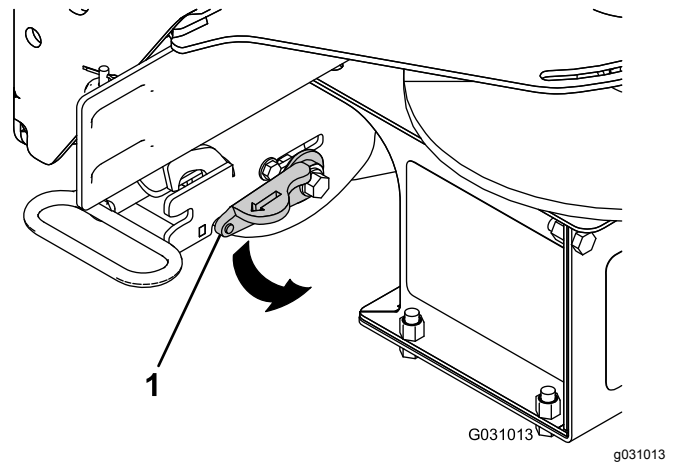


Figure 21

1. Locking lever

3. Grip the spreader firmly and step on the leg assembly to rotate it back until the bottom pin of the RT3 attachment clears the hook on the RT3 hitch (Figure 22).

⚠ DANGER

The spreader is heavy and could cause serious injury if dropped.

Ensure that your footing is stable, and avoid lifting the spreader on slippery or uneven surfaces.

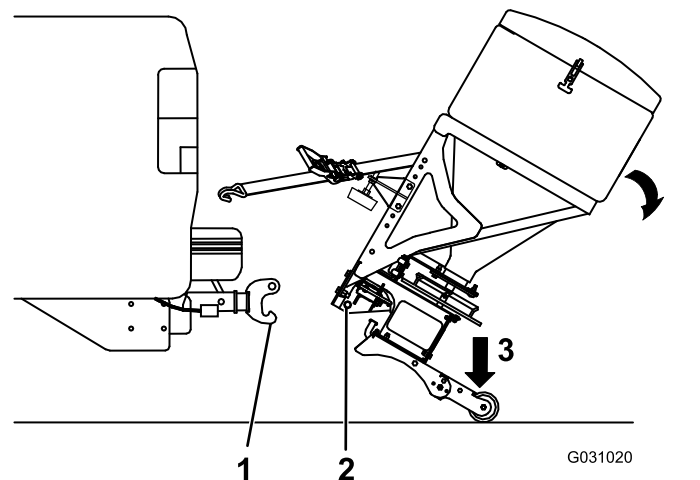


Figure 22

1. RT3 hitch hook
2. Bottom pin
3. Step here

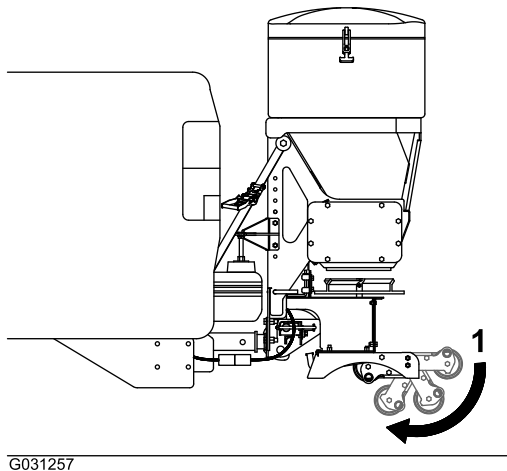
4. Push the spreader forward and lower the bottom pin of the RT3 attachment onto the hitch hook.
5. Tip the spreader upright until the top pin of the RT3 attachment locks into place.

⚠ DANGER

The spreader is heavy and could cause serious injury or property damage if it falls off your vehicle.

Ensure that the top pin of the RT3 attachment is fully locked into place and that the safety latch is down.

6. Rotate the pads on the stabilizer arms until they are tight against your truck bumper and tighten the jam nut to secure them.
7. Slide the ends of the ratchet straps between the bumper and tailgate on your vehicle and attach them to a solid point on the truck frame rail.
8. Step on the leg-assembly wheels to pivot them and stow them under the leg assembly (Figure 23).



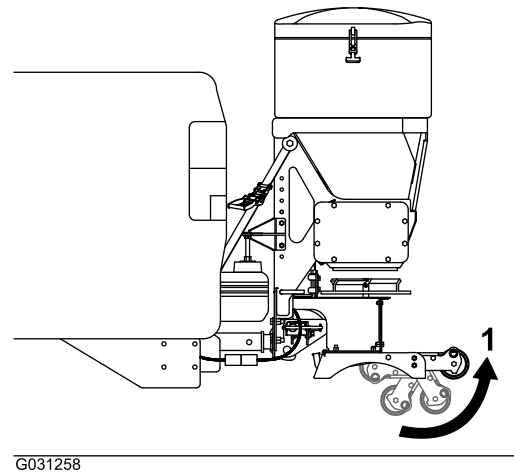
G031257

g031257

Figure 23

1. Leg-assembly wheels

9. Remove the weather caps from both the vehicle and spreader wire harnesses, and plug the spreader harness into the vehicle wire harness.



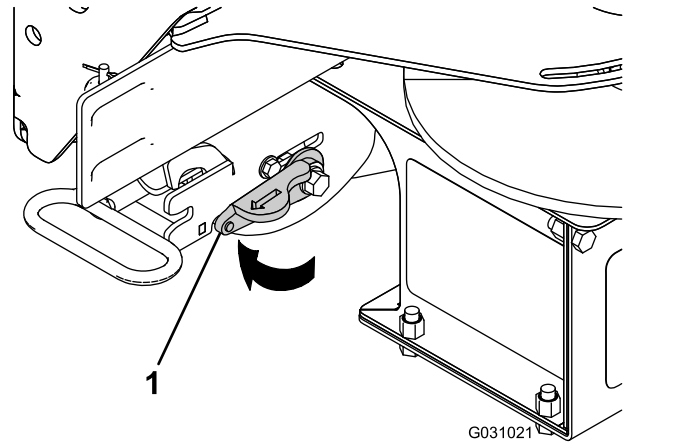
G031258

g031258

Figure 24

1. Leg-assembly wheels

4. Loosen the ratchet straps and stabilizer arms.
5. Rotate the locking lever on the RT3 attachment to the UNLOCK position (Figure 25).



G031021

g031021

Figure 25

1. Locking lever

6. Tilt the spreader down to release the top pin of the RT3 attachment (Figure 26).

Removing the Spreader Equipped with the RT3 Attachment

1. Ensure that the spreader controller is off.
2. Unplug the spreader wire harness from the vehicle wire harness and attach the weather caps to each end.
3. Pivot the leg-assembly wheels from under the spreader (Figure 24).

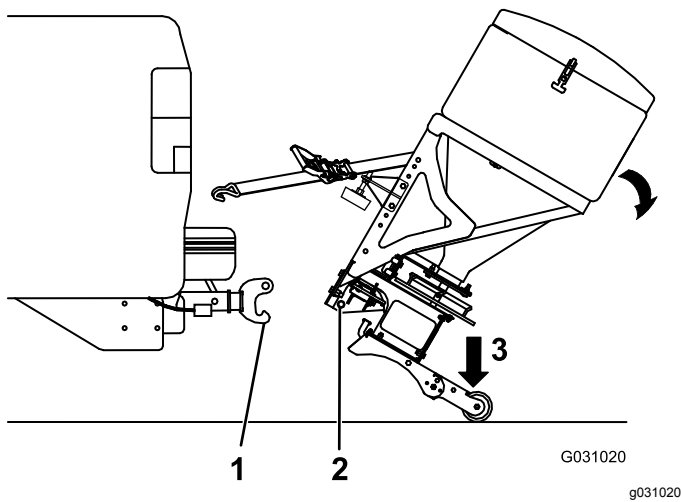


Figure 26

1. RT3 hitch hook
2. Bottom pin
3. Step here

7. Grip the spreader firmly and step on the leg assembly to rotate it back until the bottom pin of the RT3 attachment clears the hook on the RT3 hitch (Figure 26).

⚠ DANGER

The spreader is heavy and could cause serious injury if dropped.

Ensure that your footing is stable, and avoid lifting the spreader on slippery or uneven surfaces.

8. Pull the spreader back and lower it to the ground.
9. Move the spreader to your storage area.

Loading the Spreader

Important: Only use salt in the spreader. Other materials could cause damage to the machine.

1. Ensure that the spreader is securely mounted to your vehicle and is not over slippery or uneven terrain.
2. Remove the hopper cover and ensure that the top screen is installed and closed.
3. Determine the amount of material that you can safely transport in your spreader; refer to [Specifications \(page 11\)](#).
4. Fill the hopper using the following methods:
 - If using bagged materials, place the bag on the top screen bag splitter and work it back and forth to split the bag. Continue to move and shake the bag until it is empty.

Note: Have 2 people lift bags weighing more than 18 kg (40 lb).

Note: Keep your hands and fingers clear of the bag splitter when loading materials.

- If using dry bulk materials, load the materials into the hopper through the top screen to break up any large, impassable chunks that may clog the spreader.

Operating the Spreader

⚠ DANGER

Hands, feet, and clothing can get caught in the moving parts of the spreader and cause serious bodily injury and loss of limbs.

Keep your hands, feet, and clothing away from the moving spinner and attachment points.

⚠ CAUTION

The spreader throws material at a high speed that could cause minor injuries to bystanders.

Bystanders should stay a minimum of 7.6 m (25 ft) away from operating spreaders.

1. Start the vehicle.
2. Press the Power button to turn on the spreader controller.
3. Press the Power button a second time to activate the spreader.

Note: Always check for bystanders before starting the spreader.

4. Use the speed dial to set your desired spinner speed.

Note: The spinner speed determines how quickly the material is spread as well as how far it is thrown.

5. While spreading, you can press the Blast button to momentarily increase the speed of the spinner motor.
6. Press the Power button when you are finished spreading to stop the spreader.
7. Press and hold the Power button for 3 seconds or turn off your vehicle to turn off the spreader controller.

Freeing a Clog

The spreader controller illuminates AMBER LED when the spreader is attempting to clear a jam.

The spreader controller illuminates FLASHING RED LED when the spreader is unable to clear the jam.

If the clog is not cleared automatically, disconnect the spreader wire harness and manually free the clog.

Unloading the Spreader

1. Position the spreader in the area where you want to deposit the material.
2. Unload the spreader using either of the methods below:
 - Turn on the spreader controller and run the spreader until the hopper is empty.

⚠ CAUTION

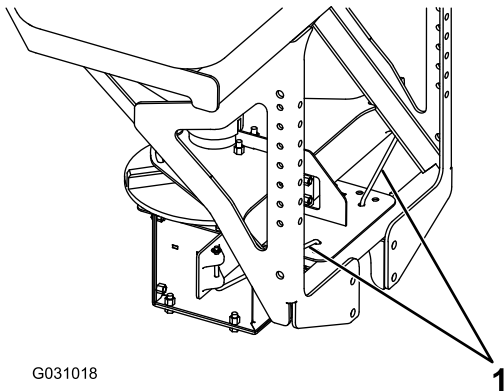
The spreader throws material at a high speed that could cause minor injuries to bystanders.

Bystanders should stay a minimum of 7.6 m (25 ft) away from operating spreaders.

- Unplug the spreader from the vehicle wire harness, and shovel out the material.

Adjusting the Material Deflectors

You can adjust the material deflectors by inserting the deflector pins into the staggered holes near the spinner (Figure 27).



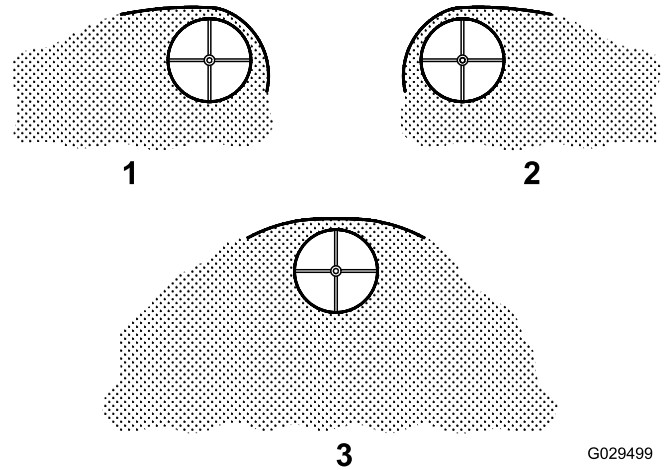
G031018

g031018

Figure 27

1. Material deflector pins

You can adjust the spread pattern by positioning the deflectors as shown in Figure 28.



G029499

g029499

Figure 28

Deflection Settings

1. Driver side open
2. Passenger side open
3. Both sides open

Operating Tips

- Know the area in which you are working; hidden obstructions such as curbs, sidewalks, manhole covers, and pipes can damage your spreader or vehicle.
- Do not let the ice build up; always start as soon as possible.
- Always wear your seatbelt when spreading.
- Always remember to spread at a safe speed. Spreading faster can be hard on your vehicle as its load is greatly increased.
- Never ride on or put body parts into the spreader while servicing or operating it.

Troubleshooting

Problem	Possible Cause	Corrective Action
The controller has no power.	<ol style="list-style-type: none"> 1. The spade connector is not connected to the ignition switch power source. 2. The the ignition switch, battery, or ground connections are corroded. 3. The vehicle side circuit fuse, 40 A in-line fuse, or 5 A in-line fuse in the vehicle side harness is bad. 4. The controller is not plugged into the wire harness. 	<ol style="list-style-type: none"> 1. Connect the spade connector to the ignition switch power source. 2. Clean the ignition switch, battery, and ground connections. 3. Replace the fuses. 4. Plug in the controller.
The spinner motor does not work or the Power LED is red.	<ol style="list-style-type: none"> 1. The spreader and vehicle wire harnesses are not connected. 2. The controller is not plugged into the wire harness. 3. The spinner motor is not connected to the spreader side harness. 	<ol style="list-style-type: none"> 1. Connect the wire harnesses. 2. Plug in the controller. 3. Connect the wire harnesses.
The Power LED is flashing red.	<ol style="list-style-type: none"> 1. The spreader is jammed. 	<ol style="list-style-type: none"> 1. Refer to the Freeing a Clog section.
The spinner motor works but the spinner and auger are not turning.	<ol style="list-style-type: none"> 1. The connection between the auger and spinner and the motor shaft is bad. 2. The connection between the motor shaft and the motor hub is bad. 	<ol style="list-style-type: none"> 1. Contact your Authorized Service Dealer. 2. Contact your Authorized Service Dealer.