

### Installation Instructions

BOSS Products limited consumer warranty and BOSS Products commercial warranty policies are located at [www.BOSSPlow.com](http://www.BOSSPlow.com).

Patents pending.

## Safety

- Always follow the vehicle manufacturer's recommendations relating to system installation. For recommended vehicle models, refer to the *BOSS Snowplow Application Chart and Selection Guide*.
- Never disable, remove, or relocate any sensors or other components related to the operation of the air bags.
- To comply with federal regulations and to assure a safe vehicle, do not exceed the front gross-axle-weight rating (FGAWR), rear gross-axle-weight rating (RGAWR), and the gross-vehicle-weight rating (GVWR) at any time.
- Due to the variety of equipment that you can install on the vehicle and undercarriage, do not exceed the front gross-axle-weight rating (FGAWR), rear gross-axle-weight rating (RGAWR), and the gross-vehicle-weight rating (GVWR) at any time. This may require weighing the vehicle and adding ballast as necessary. It may also limit the payload capacity of the vehicle.

## Installation

Determine the left and right sides of the machine from the normal operating position.

1. Park the machine on a level surface, shut off the engine, wait for all moving parts to stop, engage the parking brake, and remove the key.
2. Remove the lower valance from the front of the vehicle ([Figure 1](#)). If you plan to use a bumper trim kit, install it now; refer to your bumper trim kit *Installation Instructions*.

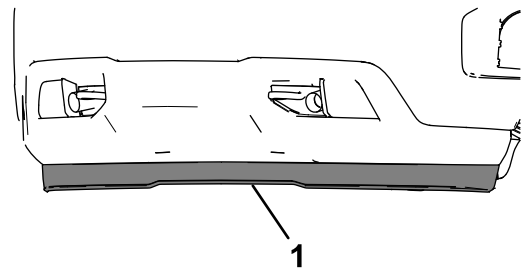


Figure 1

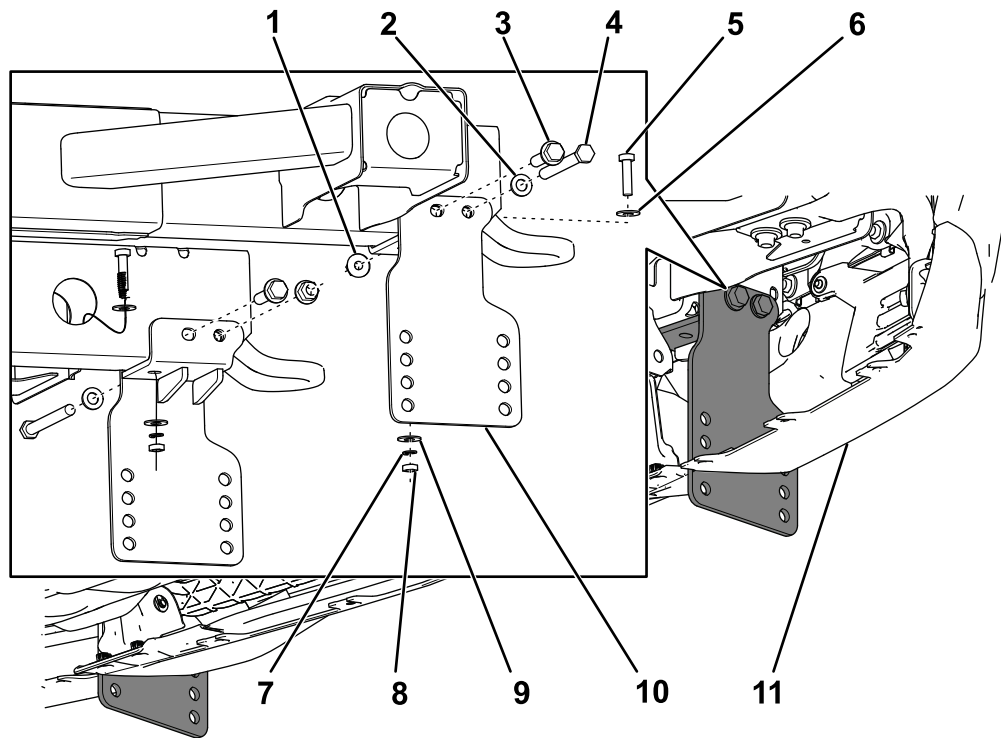
g279201

1. Lower valance

3. Remove the fasteners securing the tow hooks.
4. Loosely attach the top of the sideplates to the vehicle frame using a flange-head bolt (M12 x 50 mm), a bolt (M12 x 120 mm), a washer (M12), and flange nut (M12) as shown in [Figure 2](#).

**Note:** If you do not have a bumper trim kit installed, you will need to cut or deform the vehicle bumper to make space for the sideplates.





g279202

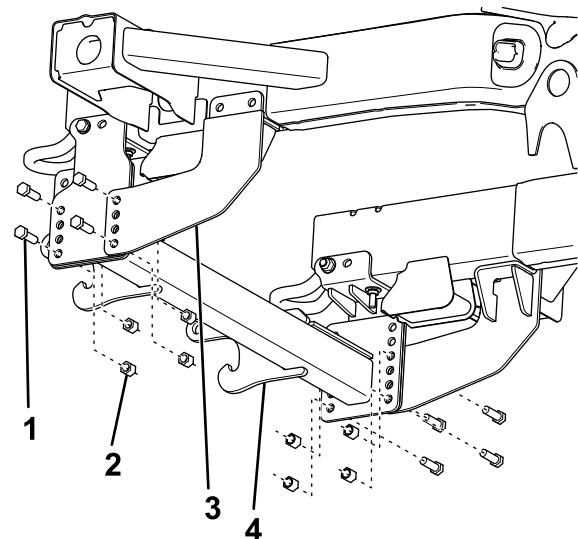
**Figure 2**

- |   |   |
|---|---|
| <ol style="list-style-type: none"> <li>1. Flange nut (M12)</li> <li>2. Washer (M12)</li> <li>3. Flange-head bolt (M12 x 50 mm)</li> <li>4. Bolt (M12 x 120 mm)</li> <li>5. Bolt (3/8 inch)</li> <li>6. Washer (3/8 inch)</li> </ol> | <ol style="list-style-type: none"> <li>7. Split lockwasher</li> <li>8. Nut (3/8 inch)</li> <li>9. Washer (3/8 inch)</li> <li>10. Sideplate</li> <li>11. Vehicle bumper</li> </ol> |
|---|---|

5. Using a bolt puller (3/8 inch), loosely secure the underside of the sideplates to the vehicle frame using a bolt (3/8 inch), 2 washers (3/8 inch), a split lockwasher, and nut (3/8 inch) as shown in figure [Figure 2](#).
6. Loosely secure the front of the pushbeam to the sideplates using 2 bolts (1/2 inch) and locknuts (1/2 inch) as shown in [Figure 3](#).

**Note:** Refer to your plow *Owner's Manual* for the appropriate pushbeam height.

**Note:** If you do not have a bumper trim kit installed, you will need to cut or deform the vehicle bumper to make space for the pushbeam.



g279203

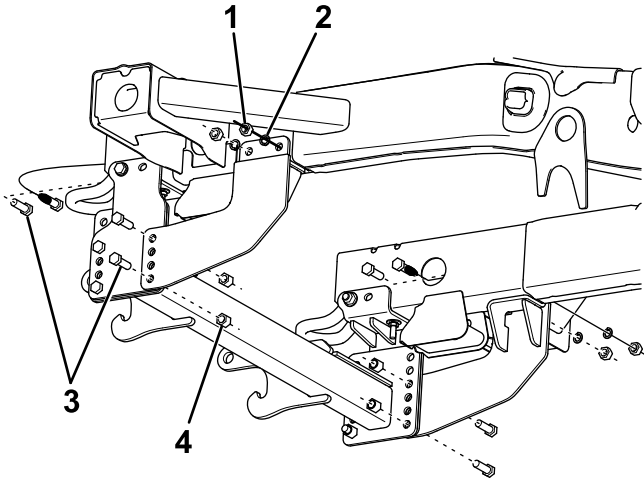
**Figure 3**

- |   |   |
|---|---|
| <ol style="list-style-type: none"> <li>1. Bolt (1/2 inch)</li> <li>2. Locknut (1/2 inch)</li> </ol> | <ol style="list-style-type: none"> <li>3. Angle bracket</li> <li>4. Pushbeam</li> </ol> |
|---|---|

7. Loosely secure the bottom of the angle brackets to the rear of the sideplates and pushbeam

using 2 bolts (1/2 inch) and locknuts (1/2 inch) as shown in [Figure 3](#).

8. Using the angle brackets as a guide, mark the upper holes ([Figure 3](#)).
9. Remove the angle brackets and drill holes (9/16 inch) at the marked locations.
10. Loosely secure the bottom of the angle brackets to the sideplates and pushbeam using 2 bolts (1/2 inch) and locknuts (1/2 inch) as shown in [Figure 4](#).

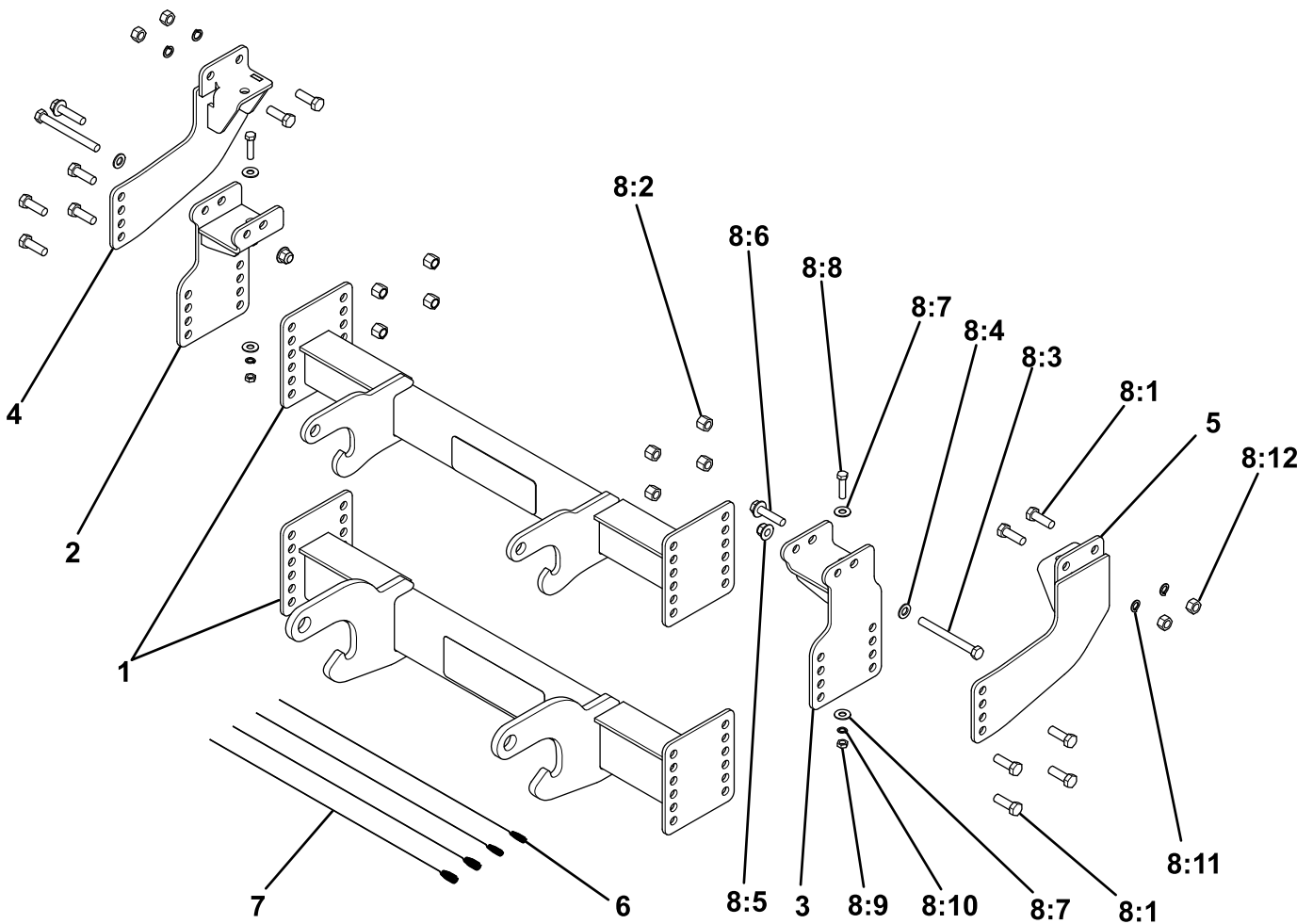


g279204

**Figure 4**

- |                 |                       |
|-----------------|-----------------------|
| 1. Full nut     | 3. Locknut (1/2 inch) |
| 2. Split washer | 4. Bolt (1/2 inch)    |

- 
11. Using a bolt puller (1/2 inch), loosely secure the top of the angle brackets to the vehicle frame using 2 bolts (1/2 inch), split washers, and full nuts as shown in [Figure 4](#).
  12. Torque the bolts on the pushbeam to 76 N·m (56 ft-lb).
  13. Torque the sideplate bolts near the vehicle tow hooks to 96 N·m (71 ft-lb).
  14. Torque the upper bolts on the angle brackets to 76 N·m (56 ft-lb).



**Parts**

g279200

Ref.	Part Number	Qty.	Description	Ref.	Part Number	Qty.	Description
1	PBA11215-03 (for LTA11210)	1	PB ASM, RT3, GM 1500, 19+ (for LTA11210)	8:3	HDW11236	2	HHCS, M12 X 1.75 X 120 MM, CL 10.9, YZN
	PBA11225-03 (for LTA11235)	1	PUSHBEAM GM 19 MY 1500 HTX (for LTA11235)	8:4	HDW11237	2	WASHER, FLAT, M12, YZN
2	PBA11220-03	1	PBSP, DR, GM 1500,19+	8:5	HDW11238	2	NUT, NYLOCK, FLANGE, M12 X 1.75 MM, CL10, YZN
3	PBA11221-03	1	PBSP, PS, GM 1500,19+	8:6	HDW08977	2	BOLT, HEX, FLANGE, M12 X 1.75 X 50 MM, ZINC
4	LTA11230-03	1	ANG BRKT, DR, GM 1500,19+	8:7	HDW01733	4	WASHER, 3/8, USS FLAT, YZN
5	LTA11231-03	1	ANG BRKT, PS, GM 1500,19+	8:8	HDW01837	2	HHCS, 3/8-16 X 1-1/2, YZN
6	HDW09739	2	BOLT PULLER, 3/8-16	8:9	HDW01770	2	NUT, 3/8-16, FIN, FULL, ZN
7	HDW09670	2	BOLT PULLER, 1/2-13	8:10	HDW01718	2	WASHER, 3/8, SPLIT LOCK, YZN
8	HDW11212	1	KIT-FASTENER, GM 1500, 19+	8:11	HDW01732	4	WASHER, 1/2, SPLIT LOCK, YZN
8:1	HDW01728	8	HHCS, 1/2-13 X 1-1/2, NC, GR5, YZN	8:12	HDW01876	4	NUT, 1/2-13, FULL, YZN
8:2	HDW01748	4	NUT, 1/2-13, NYL INS, YZN				