

Installation Instructions

BOSS Products limited consumer warranty and BOSS Products commercial warranty policies are located at www.BOSSPlow.com.

Patent www.tcopats.com.

Safety

- Always follow the vehicle manufacturer's recommendations relating to system installation. For recommended vehicle models, refer to the *BOSS Snowplow Application Chart and Selection Guide*.
- Never disable, remove, or relocate any sensors or other components related to the operation of the air bags.
- To comply with federal regulations and to assure a safe vehicle, do not exceed the front gross-axle-weight rating (FGAWR), rear gross-axle-weight rating (RGAWR), and the gross-vehicle-weight rating (GVWR) at any time.
- Due to the variety of equipment that you can install on the vehicle and undercarriage, do not exceed the front gross-axle-weight rating (FGAWR), rear gross-axle-weight rating (RGAWR), and the gross-vehicle-weight rating (GVWR) at any time. This may require weighing the vehicle and adding ballast as necessary. It may also limit the payload capacity of the vehicle.

Installation

Determine the left and right sides of the machine from the normal operating position.

1. Park the machine on a level surface, shut off the engine, wait for all moving parts to stop, engage the parking brake, and remove the key.
2. Remove the lower valance from the front of the vehicle. If you plan to use a bumper trim kit, install it now; refer to your bumper trim kit *Installation Instructions*.

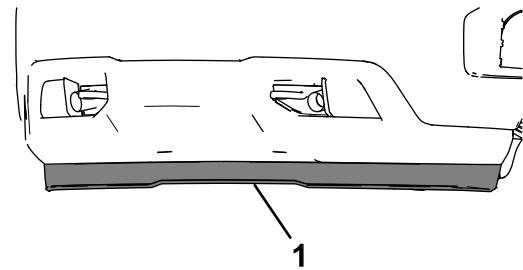


Figure 1

g279201

1. Lower valance

3. Remove the fasteners securing the tow hooks.
4. Using a bolt puller (3/8 inch), loosely attach the inside top of the sideplates to the vehicle frame using 1 hex head bolt (3/8-16 inch), 2 flat washers (3/8 inch), 1 split washer (3/8 inch), and 1 nut (3/8-16 inch).

Note: If you do not have a bumper trim kit installed, you will need to cut or deform the vehicle bumper to make space for the sideplates.



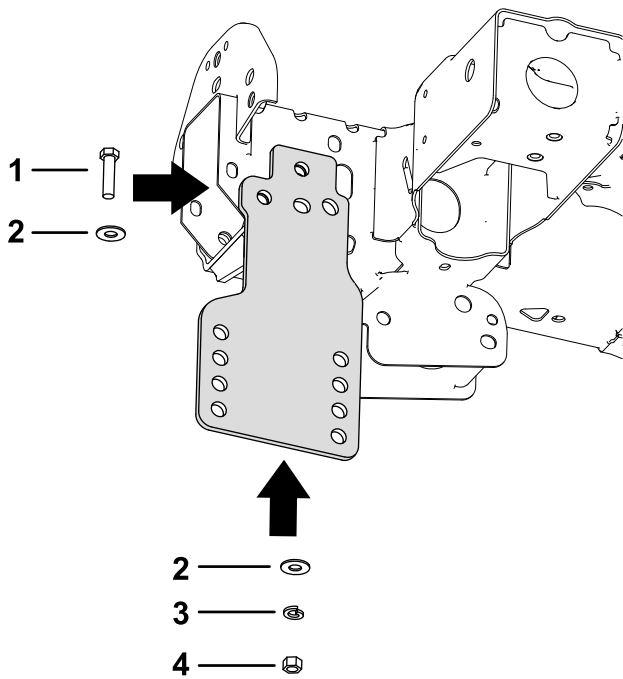


Figure 2

- | | |
|--------------------|-------------------|
| 1. Bolt (3/8 inch) | 3. Split washer |
| 2. Flat washer | 4. Nut (3/8 inch) |

g404059

5. Loosely attach the inside top of the sideplates to the vehicle frame using:

- For models 2019-2022, 2 bolts (M12 x 120 mm), 2 washers (M12), 2 locknuts (M12), and 1 bolt (M12 x 50 mm).
- For models built mid-year 2022 and after, 2 bolts (M12 x 120 mm), 2 washers (M12), 1 spacer, 2 locknuts (M12), and 1 bolt (M12 x 50 mm).

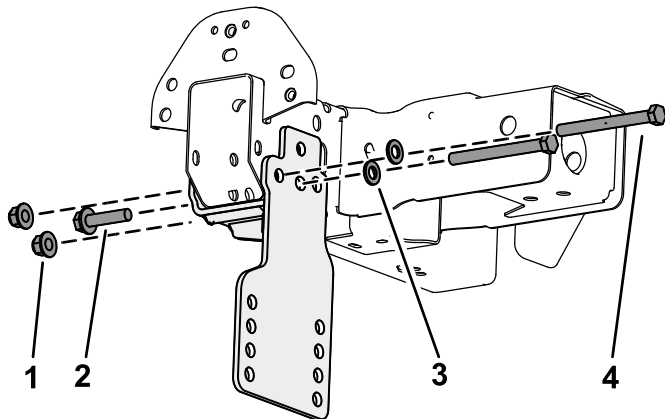


Figure 3
2019-2022

- | | |
|-----------------------|------------------------|
| 1. Locknut (M12) | 3. Washer (M12) |
| 2. Bolt (M12 x 50 mm) | 4. Bolt (M12 x 120 mm) |

g405660

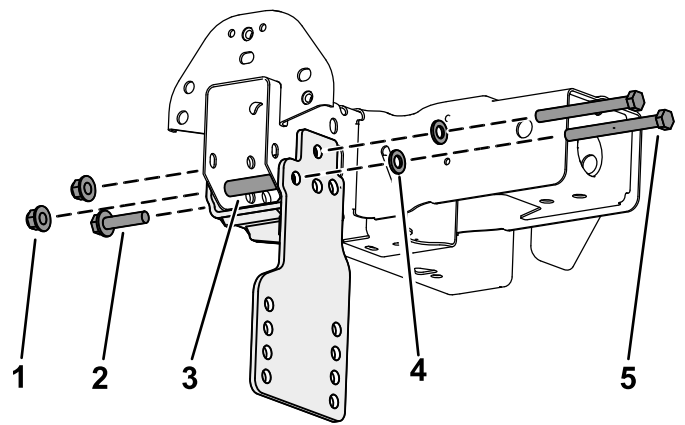


Figure 4
mid-year 2022 and after

- | | |
|-----------------------|------------------------|
| 1. Locknut (M12) | 4. Washer (M12) |
| 2. Bolt (M12 x 50 mm) | 5. Bolt (M12 x 120 mm) |
| 3. Spacer | |

g435629

6. Using a bolt puller (1/2 inch), loosely secure the rear sideplates to the vehicle frame using 2 bolts (1/2 inch), 2 lock washers (1/2 inch), and nut (1/2 inch).

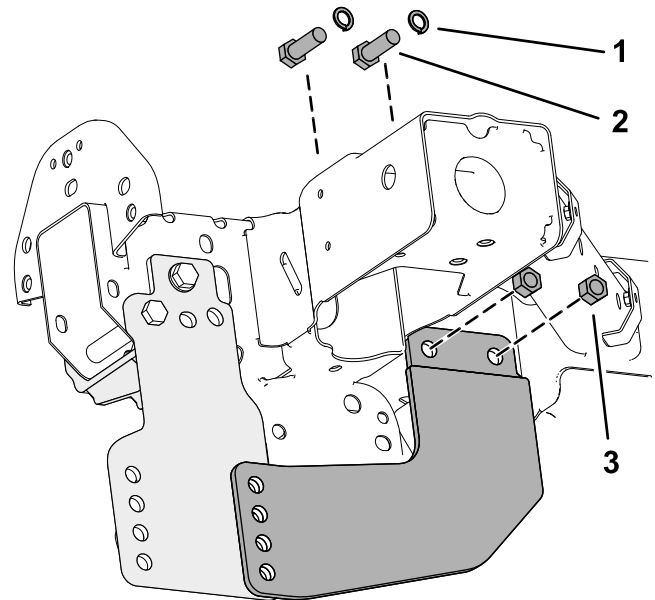


Figure 5

- | | |
|--------------------|-------------------|
| 1. Lock washer | 3. Nut (1/2 inch) |
| 2. Bolt (1/2 inch) | |

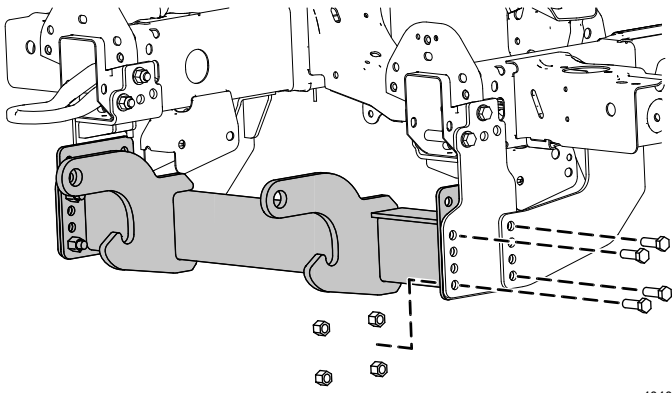
g404062

7. Loosely secure the front of the pushbeam to the sideplates using 8 bolts (1/2 inch) and 8 locknuts (1/2 inch).

Note: Refer to the Recommended Pushbeam Height table below.

Note: If you do not have a bumper trim kit installed, you will need to cut or deform

the vehicle bumper to make space for the pushbeam.



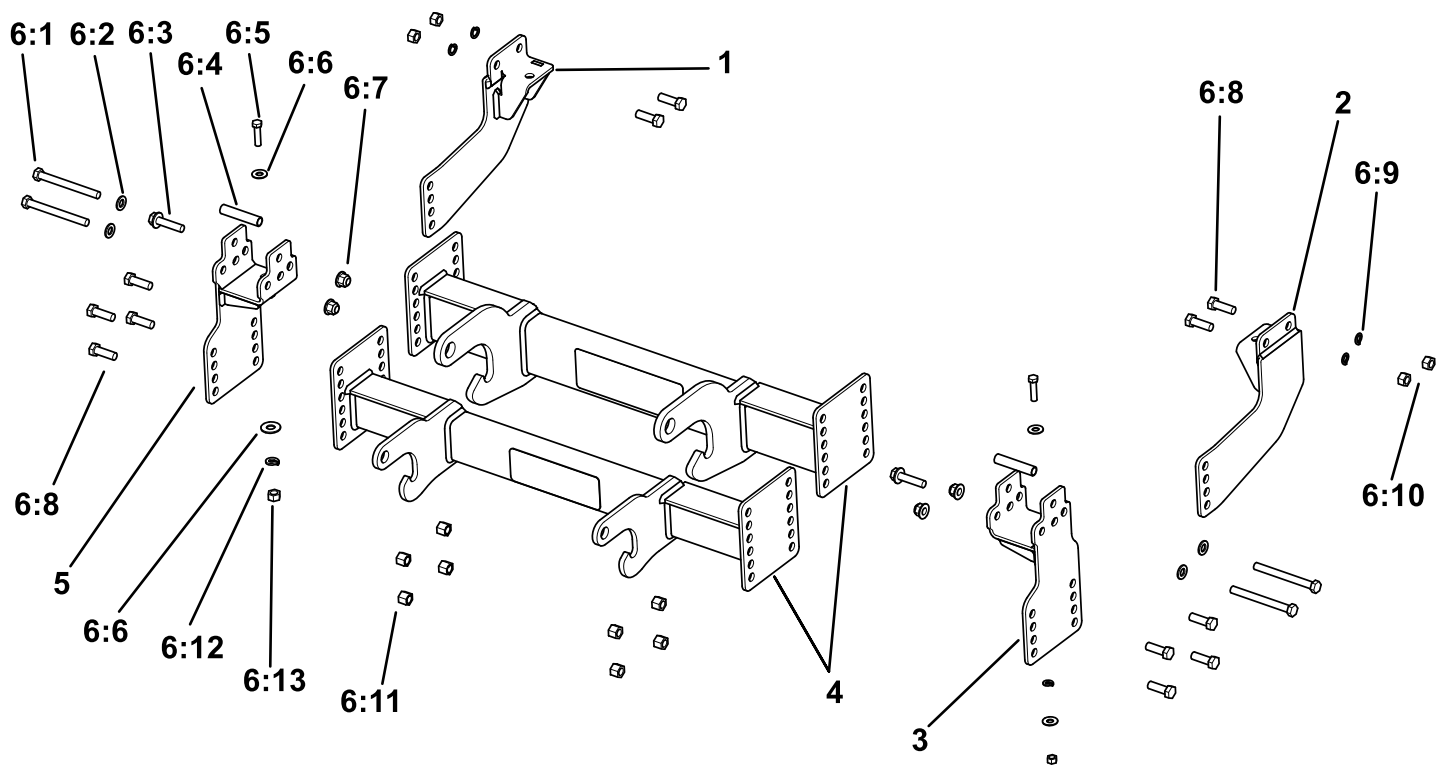
g404061

Figure 6

Recommended Pushbeam Height

Plow Type	Recommended Pushbeam Height
Rear Mounted Plow	48 cm (19 inches)
UTV	44-1/2 cm (17-1/2 inches)
Heavy Duty	15 cm (16-1/2 inches)
Standard Duty	39 cm(15-1/2 inches)
HTX/Sport Duty	37 cm (14-1/2 inches)

8. Torque the bolts on the pushbeam to 76 N·m (56 ft-lb).
9. Torque the sideplate bolts near the vehicle tow hooks to 96 N·m (71 ft-lb).
10. Torque the upper bolts on the angle brackets to 76 N·m (56 ft-lb).



Parts

g404063

Ref.	Part Number	Qty.	Description	Ref.	Part Number	Qty.	Description
1	LTA11231-03	1	ANG BRKT, PS, GM 1500,19+	6:4	MSC11357	2	TUBE-SPACER, GM 19MY, 1500
2	LTA11230-03	1	ANG BRKT, DR, GM 1500,19+	6:5	HDW01837	2	HHCS, 3/8-16 X 1-1/2, YZN
3	PBA11265-03	1	PBSP, DS, GM 1500, 19+	6:6	HDW01733	4	WASHER, 3/8, USS FLAT, YZN
4	PBA11215-03 (for LTA11210B)	1	PB ASM, RT3, GM 1500, 19+ (for LTA11210)	6:7	HDW11238	4	NUT, NYLOCK, FLANGE, M12 X 1.75 MM, CL10, YZN
	PBA11225-03 (for LTA11235B)				6:8	HDW01728	12
5	PBA11266-03	1	PBSP, PS, GM 1500, 19+	6:9	HDW01732	4	WASHER, 1/2, SPLIT LOCK, YZN
6	HDW11299	1	KIT-FASTENER, GM 19 MY	6:10	HDW02410	4	NUT, 1/2-13, FULL, YZN
6:1	HDW11236	4	HHCS, M12 X 1.75 X 120 MM, CL 10.9, YZN	6:11	HDW01748	8	NUT, 1/2-13, NYL INS, YZN
6:2	HDW11237	4	WASHER, FLAT, M12, YZN	6:12	HDW01718	2	WASHER, 3/8, SPLIT LOCK, YZN
6:3	HDW08977	2	BOLT, HEX, FLANGE, M12 X 1.75 X 50 MM, ZINC	6:13	HDW01770	2	NUT, 3/8-16, FIN, FULL, ZN
					HDW09739	2	BOLT PULLER, 3/8-16
					HDW09670	2	BOLT PULLER, 1/2-13