

Safety

- Always follow the vehicle manufacturer's recommendations relating to snowplow installation. For recommended vehicle models, refer to the *BOSS Snowplow Application Chart and Selection Guide*.
- Many newer trucks are equipped with air bags. **Never** disable, remove, or relocate any sensors or other components related to the operation of the air bags.
- To comply with federal regulations do not exceed the front gross-axle-weight rating (FGAWR), rear gross-axle-weight rating (RGAWR), and the gross-vehicle-weight rating (GVWR) at any time.
- Due to the variety of equipment that you can install on the vehicle, do not exceed the front gross-axle-weight rating (FGAWR), rear gross-axle-weight rating (RGAWR), and the gross-vehicle-weight rating (GVWR) at any time. This may require weighing the vehicle and adding ballast as necessary. It may also limit the payload capacity of the vehicle.

Installation

1. Park the vehicle on a level surface, engage the parking brake, shut off the engine, and remove the key.
2. Remove the skid plate, tow hooks, inside panels, and lower bumper valance (if equipped) for accessibility. Retain the hardware.

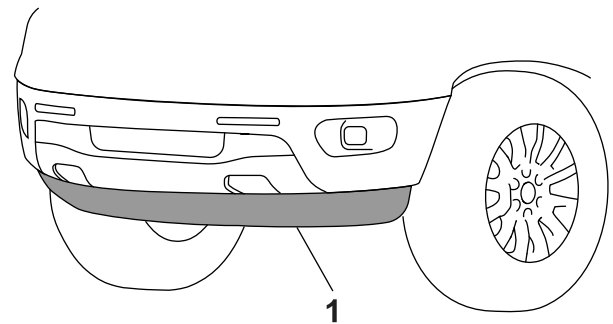


Figure 1

g324212

1. Lower bumper valance

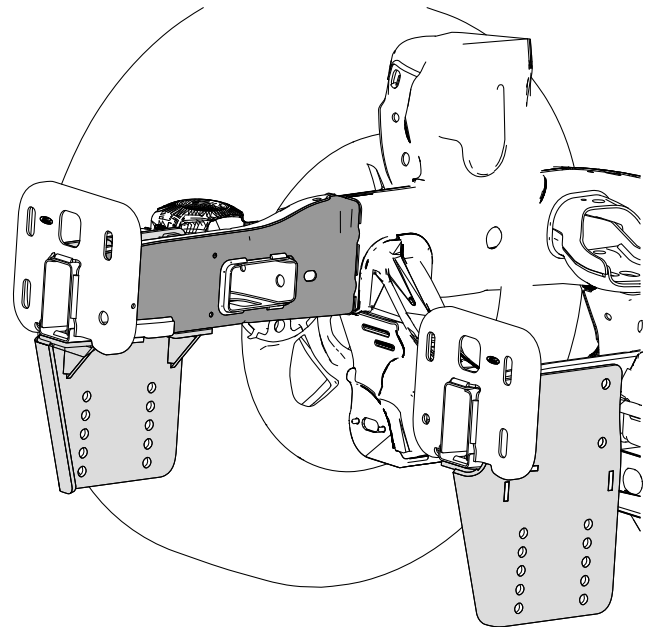
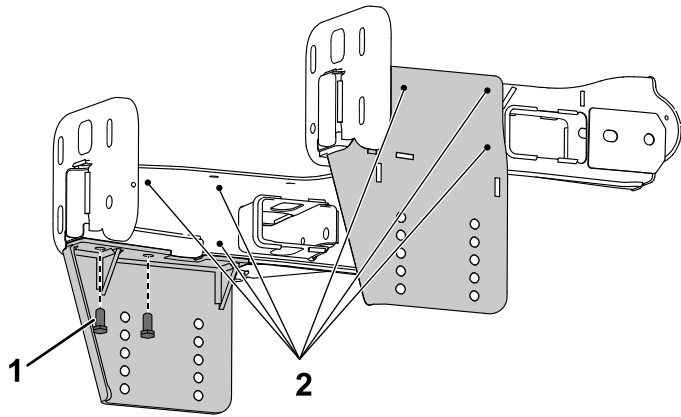


Figure 2

g318781



- Loosely install the side brackets to the chassis using existing tow hook mounting hardware.
- Mark the holes on the outside of the frame rails and remove the support plates.

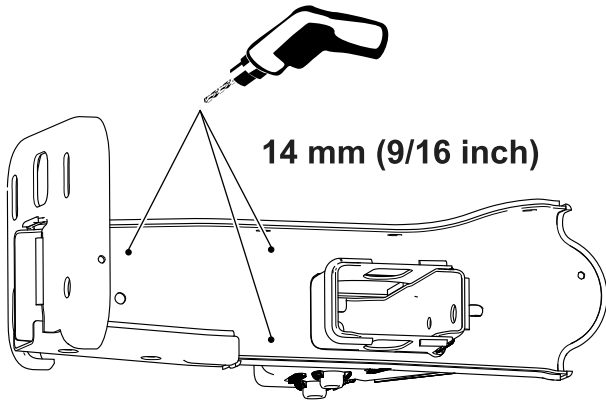


g320763

Figure 3

- Existing hardware
- Mark the holes to be drilled.

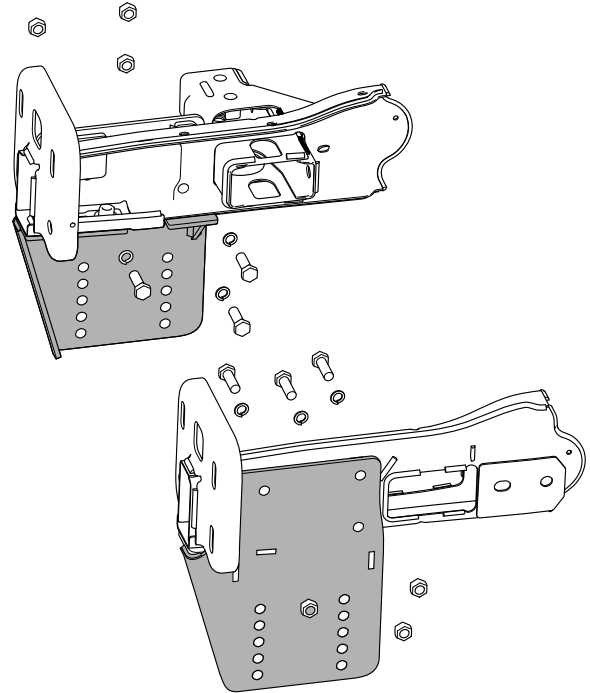
- Remove the side brackets and drill 6 holes (14 mm (9/16 inch)).



g320764

Figure 4

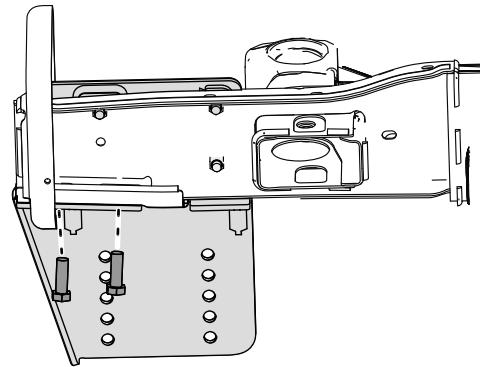
- Using a bolt puller (1/2 inch), loosely secure the top of the brackets to the vehicle frame using 3 bolts (1/2 inch), lock washers, and full nuts (1/2 inch) on each side.



g320765

Figure 5

- Secure the horizontal part of the bracket to the chassis using existing hardware. Torque the bolts to 89 n·m (66 ft-lb).



g320766

Figure 6

8. Secure the pushbeam to the side panels using 4 bolts (1/2 inch) and 4 locknuts (1/2 inch) on each side.

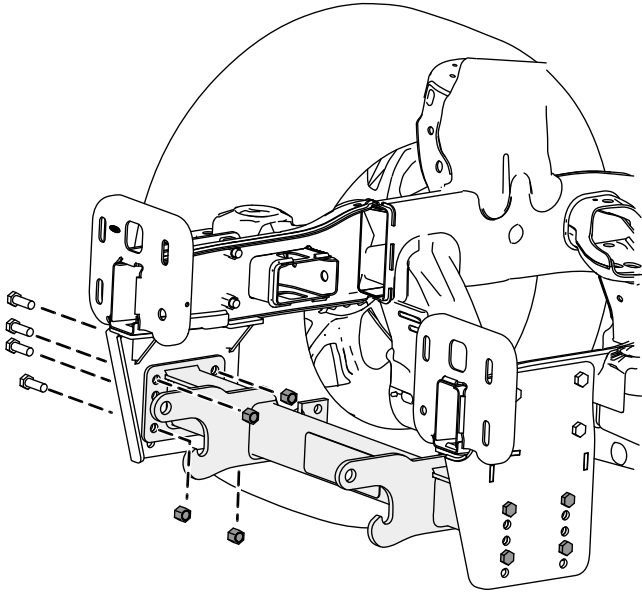


Figure 7

g318784

10. Secure the rear of the angle shaped bracket to the chassis using existing hardware. Torque the bolts to 51 n·m (38 ft-lb).

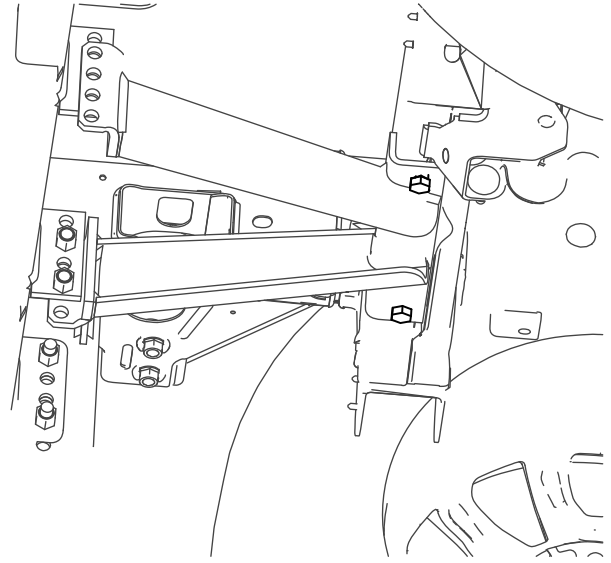


Figure 9

g318786

9. Secure the angle shaped bracket to the pushbeam using 4 bolts (1/2 inch) and 4 locknuts (1/2 inch).

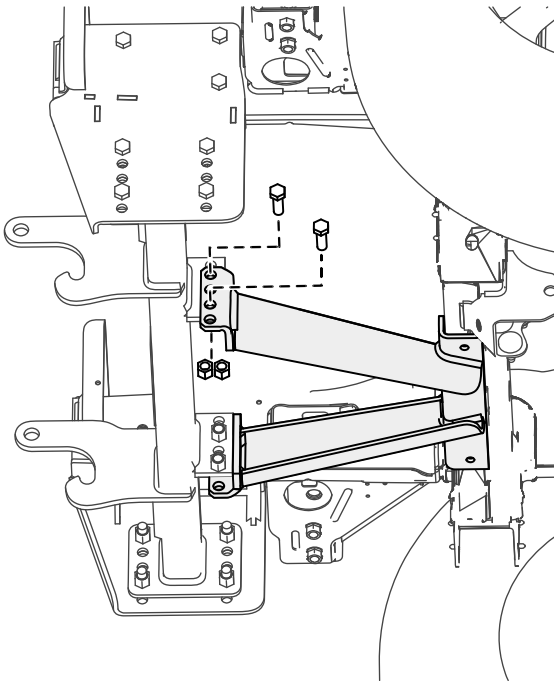
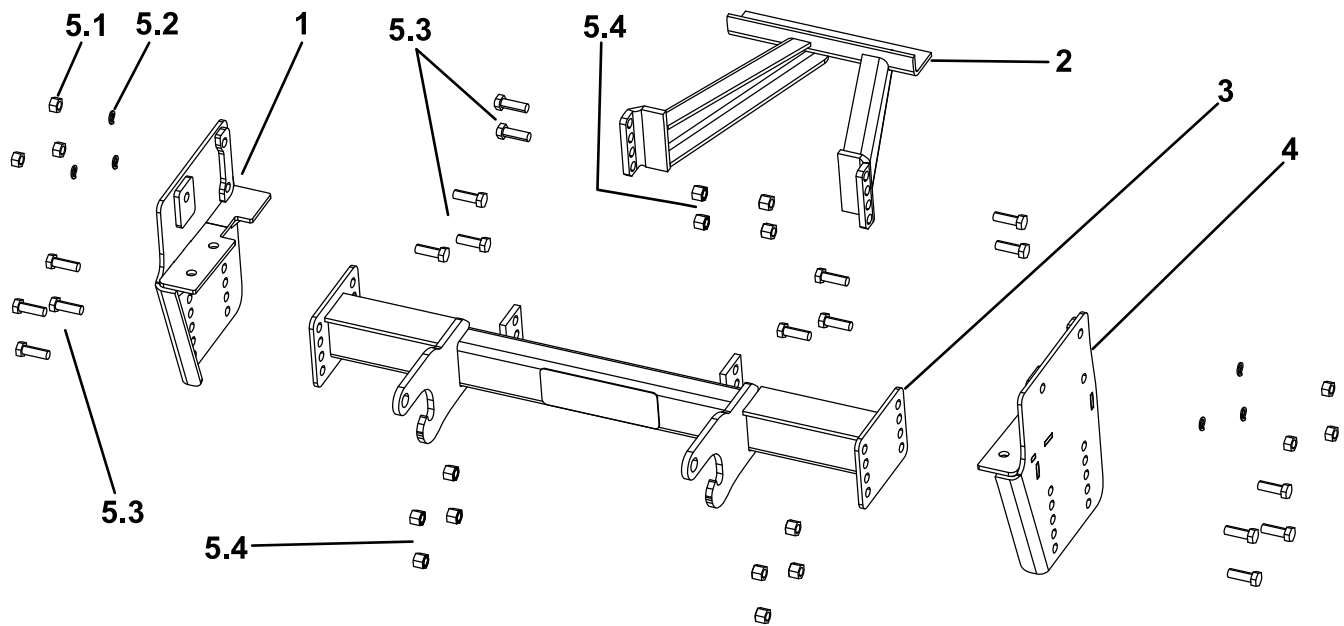


Figure 8

g318785

11. Torque the 1/2-inch bolts to torque to 76 n·m (56 ft-lb).

Important: Tighten all fasteners again after 2 hours of plowing.



g317435

Parts

Ref.	Part Number	Qty.	Description
1	PBA24085-03	1	PBSP,RH,FORD RANGER,19
2	LTA24094-03	1	BRKT ASM,REAR,PBSP,FORD RANGER,19
3	PBA24081-03	1	PB ASM RT3 HTX/SPORT FORD RANGER,19
4	PBA24090-03	1	PBSP,LH,FORD RANGER,19
5	HDW24096	1	FASTENER KIT, FORD RANGER 19+
5.1	HDW02410	6	NUT,1/2-13,FIN,FULL,YZN
5.2	HDW01732	6	WASHER,1/2,SPLIT LOCK,YZN
5.3	HDW01728	18	HHCS,1/2-13X1-1/2,NC,GR5,YZN
5.4	HDW01748	12	NUT,1/2-13,NYL INS,YZN
	MSC09670	2	BOLT PULLER,1/2-13