

Safety

- Always follow the vehicle manufacturer's recommendations relating to system installation.
- Due to the variety of equipment that you can install using the undercarriage, ensure that

the gross-vehicle-weight rating (GVWR) is not exceeded at any time. You may need to weigh the vehicle and add ballast or limit the payload of the vehicle to compensate.

Installation

1. Park the machine on a level surface, shut off the engine, wait for all moving parts to stop, engage the parking brake, and remove the key.
2. Remove the 2 bolts securing the bumper caps to the face of the bumper and remove the bumper caps.
3. Remove the 6 bolts securing the bottom skid plate to the vehicle frame.

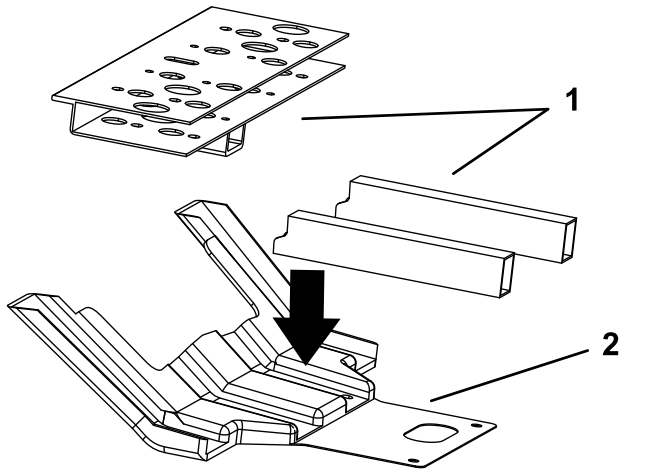


Figure 1

1. Frame
2. Skid plate

4. Using the bolt puller, insert 2 bolts (1/2 x 1-1/2 inches) through the rear most hole in the frame tubes.

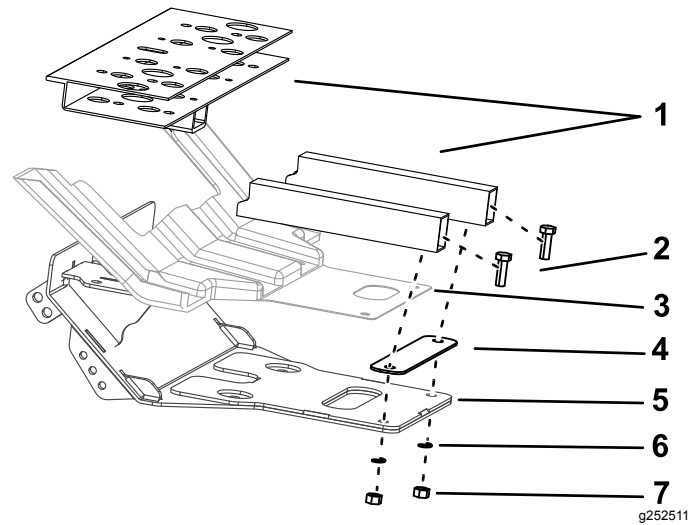
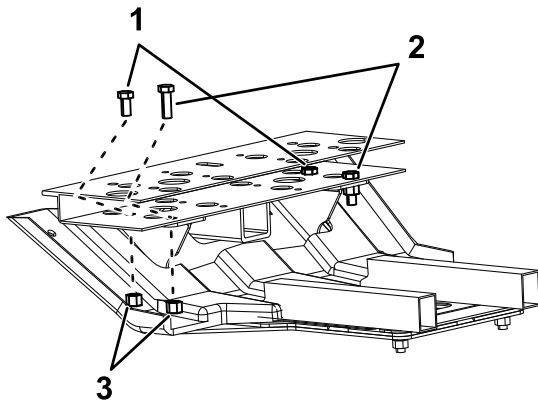


Figure 2

1. Frame
2. Bolts (1/2 x 1-1/2 inches)
3. Skid plate
4. Spacer
5. Undercarriage
6. Washers
7. Nuts (1/2 x 7/16 inch)

5. Secure the plow skid plate and vehicle bottom skid plate to the vehicle frame using the existing and supplied hardware as shown in [Figure 2](#) and [Figure 3](#).

Note: The previously removed rear skid plate bolts are not needed.



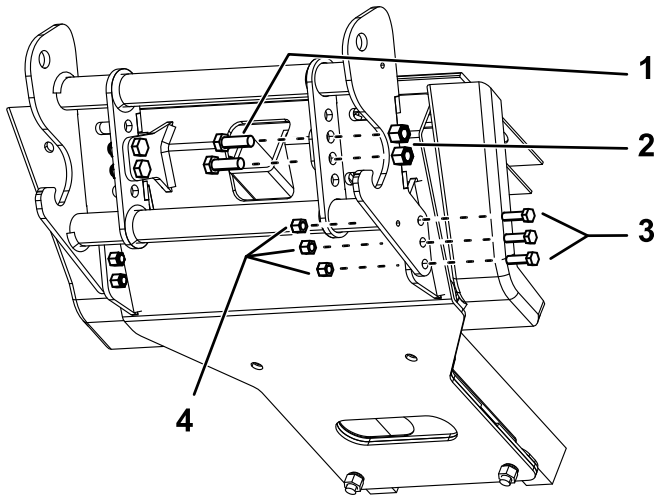
g252513

Figure 3

- 1. Bolts (1/2 x 1 inch)
- 2. Bolts (1/2 x 1-1/2 inches)
- 3. Locknuts (1/2 x 1 inch)

- 6. Tighten all of the installed fasteners and torque them to 31 N·m (23 ft-lb).
- 7. Mount the pushbeam to the plow skid plate using 4 bolts (1/2 x 1-1/2 inches), 4 locknuts (1/2 inch), 6 bolts (3/8 x 1-1/4 inch), and 6 locknuts (3/8 inch) as shown in [Figure 4](#).

Note: Refer to your plow *Owner's Manual* for the appropriate pushbeam height.

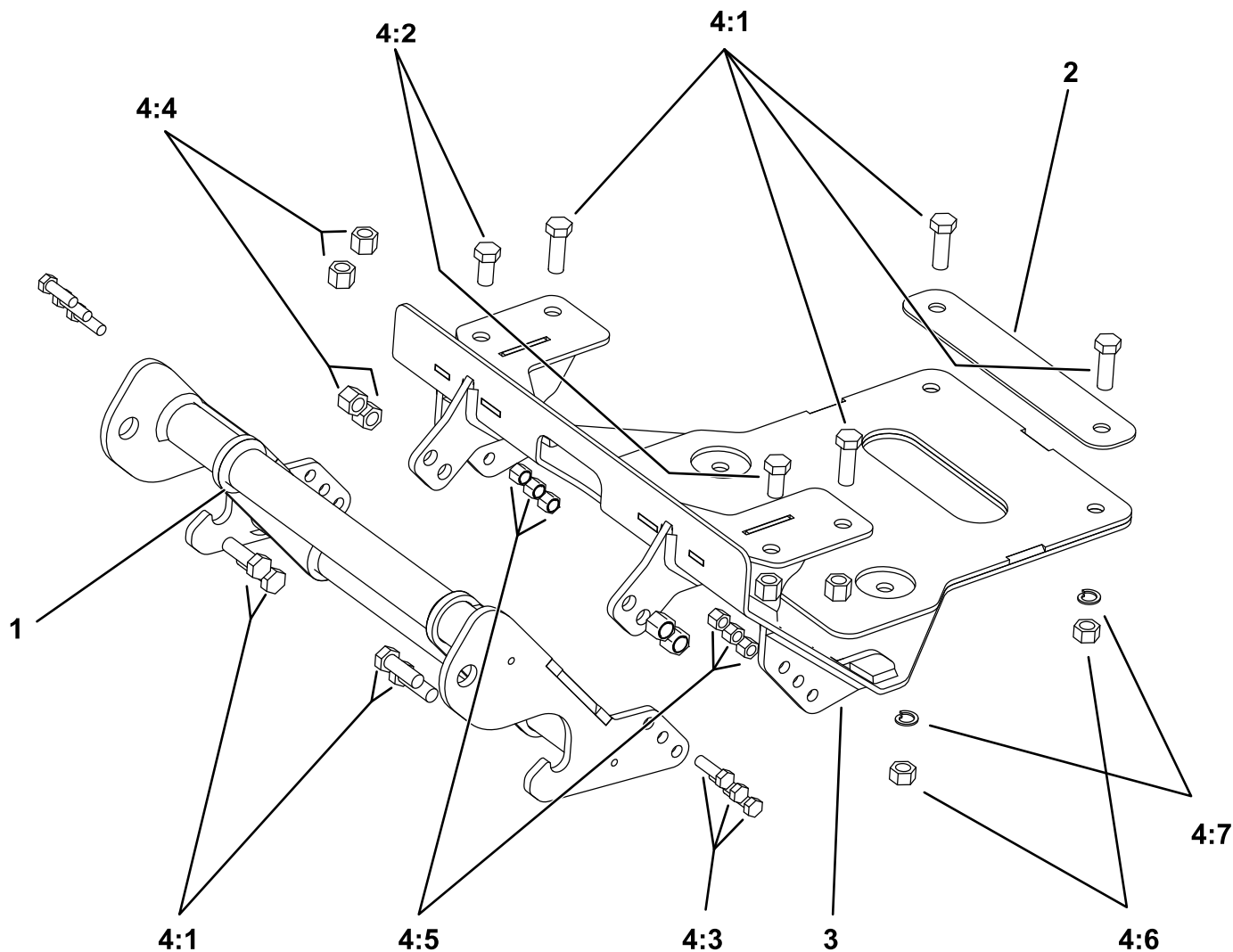


g252512

Figure 4

- 1. Bolt (1/2 x 1- 1/2 inch)
- 2. Locknut (1/2 inch)
- 3. Bolt (3/8 x 1-1/4 inch)
- 4. Locknut (3/8 inch)

- 8. Torque the 1/2–inch bolts to 76 N·m (56 ft-lb), and torque the 3/8–inch bolts to 31 N·m (23 ft-lb).
- 9. Apply the BOSS decal to the top tube on the vehicle bumper.



g252141

Ref.	Part Number	Qty.	Description
1	PBA12535	1	PUSHBEAM ASSEMBLY
2	LTA12348	1	REAR SHIM
3	LTA12336	1	SKID PLATE ASSEMBLY
4	HDW12347	1	FASTENER KIT, UC, UTV, JD GATOR 835/865, 18+
4:1	HDW01728	8	1/2"-13X1-1/2" GR5 HEX HEAD BOLT
4:2	HDW01781	2	1/2"-13X1", NC, GR5, HEX HEAD BOLT
4:3	HDW01771	6	3/8"-16X1-1/4", NC, GR5, HEX HEAD BOLT
4:4	HDW01748	8	1/2"-13 NYLON LOCK NUT
4:5	HDW01720	6	3/8"-16 NYLON NUT
4:6	HDW02410	2	1/2"-13 NUT
4:7	HDW01732	2	1/2" SPLIT LOCK WASHER

BOSS
S N O W P L O W