

BOSS Products limited consumer warranty and BOSS Products commercial warranty policies are located at www.BOSSPlow.com.

Patents pending.

Safety

- Always follow the vehicle manufacturer's recommendations relating to system installation.
- Due to the variety of equipment that you can install using the undercarriage, ensure that the gross-vehicle-weight rating (GVWR) is not exceeded at any time. You may need to weigh the vehicle and add ballast or limit the payload of the vehicle to compensate.

Installation

Determine the left and right sides of the machine from the normal operating position.

1. Park the machine on a level surface, shut off the engine, wait for all moving parts to stop, engage the parking brake, and remove the key.
2. Using the winch plate as a template, drill the holes indicated in [Figure 1](#) into the vehicle bumper using a 7/16-inch drill bit.

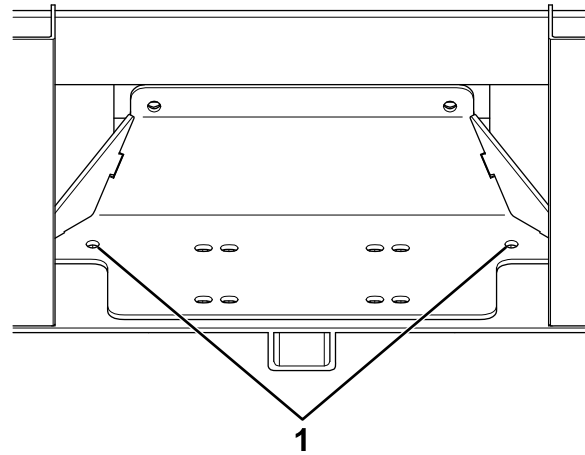


Figure 1

g284891

1. Drill

3. Loosely attach the winch plate to the vehicle frame using 4 bolts (3/8 inch) and locknuts ([Figure 2](#)).

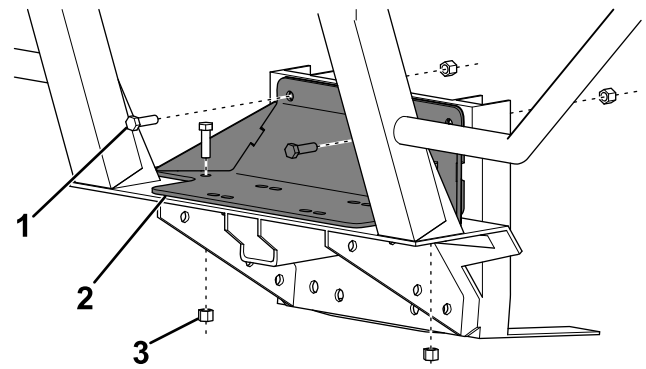


Figure 2

g284438

1. Bolt (3/8 inch)
2. Winch plate
3. Locknut (3/8 inch)



- Loosely attach the skid plate to the vehicle frame and winch plate using 4 flange-head bolts (M8) and flange-head locknuts (M8) as shown in [Figure 3](#).

Note: If your vehicle is equipped with a winch, discard the flange-head bolts and locknuts (M8), and use the existing bolts to secure the skid plate. Install the existing bolts in the opposite direction shown in [Figure 3](#).

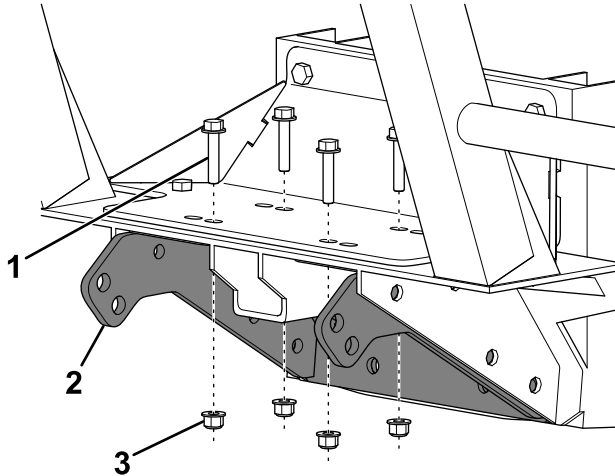


Figure 3

g284439

- Flange-head bolt (M8)
- Skid plate
- Flange-head locknut (M8)

- Loosely secure the bottom of the skid plate to the vehicle frame using 4 bolts (M12) as shown in [Figure 4](#).

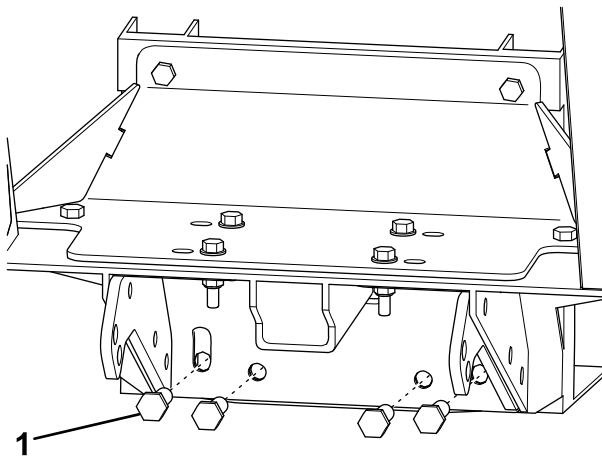


Figure 4

g284440

- Bolt (M12)

- Drill the existing holes on the vehicle frame shown in [Figure 5](#) larger using a 7/16-inch drill bit.

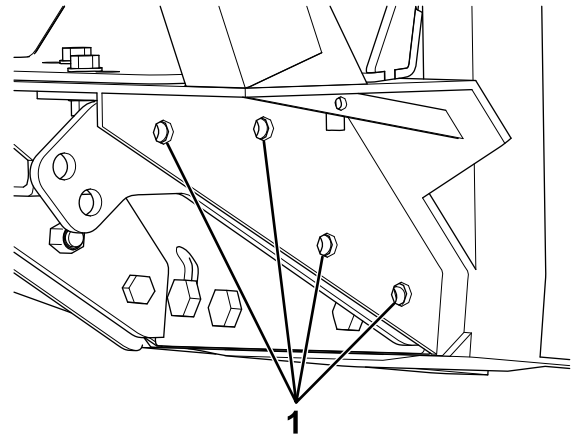


Figure 5

g284892

- Drill

- Loosely attach the side brackets to the vehicle frame and skid plate using 4 bolts (3/8 inch) and locknuts ([Figure 6](#)).

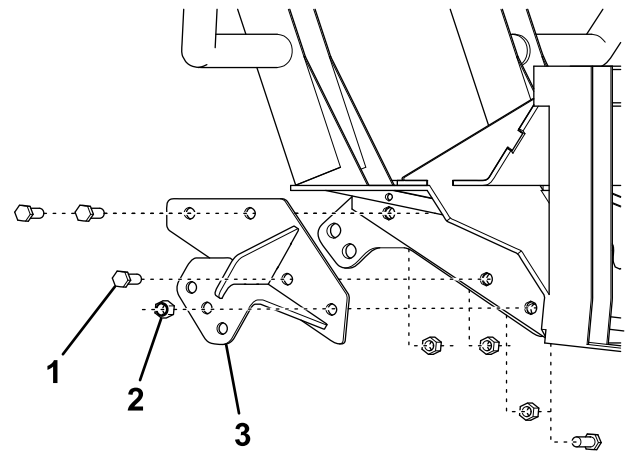


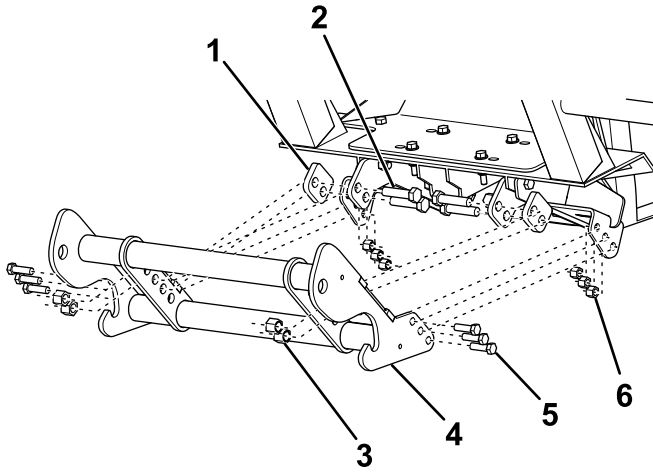
Figure 6

g284441

- Bolt (3/8 inch)
- Locknut (3/8 inch)
- Side bracket

- Loosely attach the side mounts of the pushbeam assembly to the skid plate using 6 bolts (3/8 inch) and locknuts (Figure 7).

Note: Refer to your plow *Owner's Manual* for the appropriate pushbeam height.

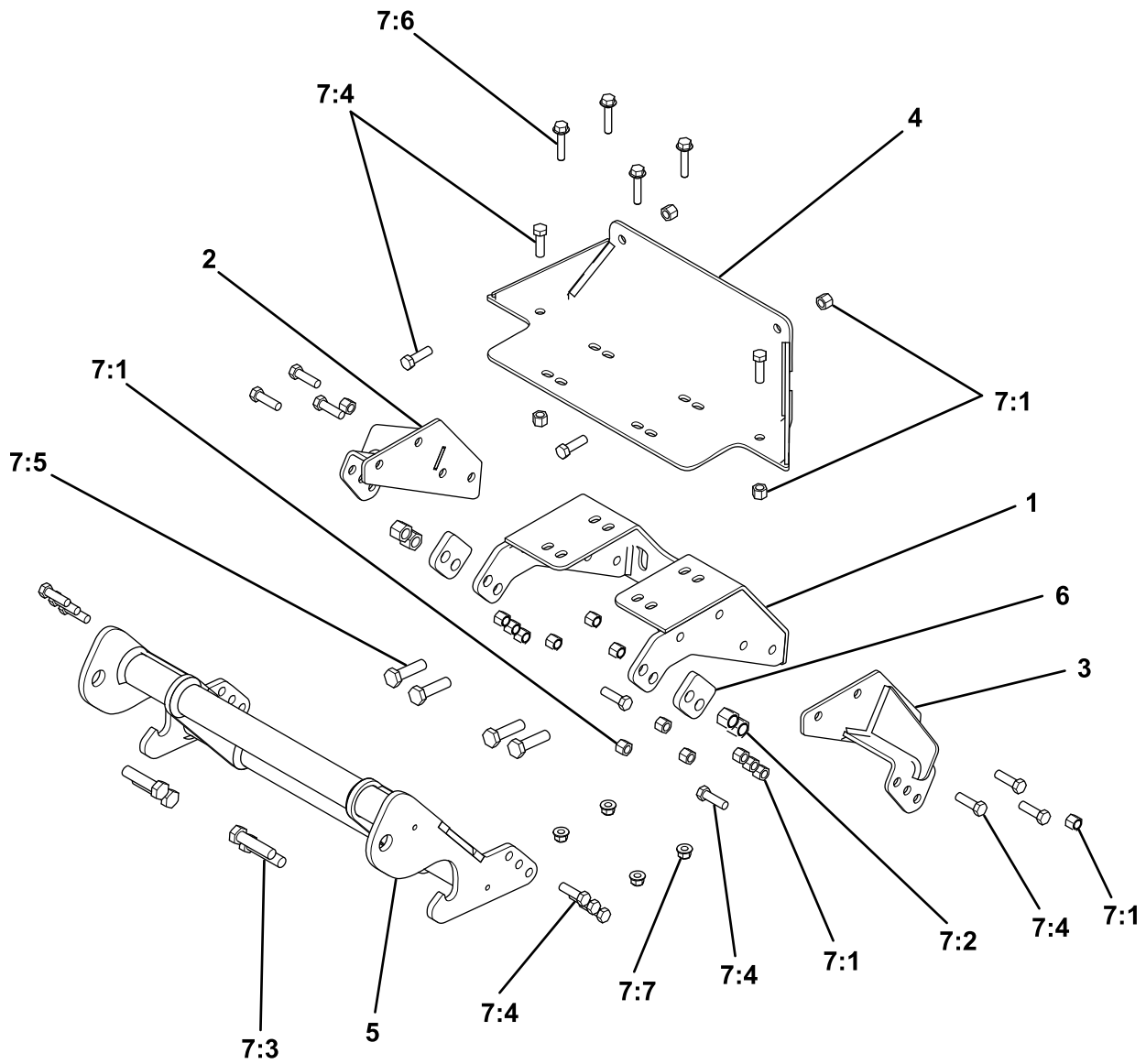


g284442

Figure 7

- | | |
|--------------------|--------------------|
| 1. Spacer | 4. Pushbeam |
| 2. Bolt (1/2 inch) | 5. Bolt (3/8 inch) |
| 3. Nut (1/2 inch) | 6. Nut (3/8 inch) |

-
- Loosely attach the inside of the pushbeam assembly to the skid plate using 4 bolts (1/2 inch), 2 spacers, and 4 locknuts (Figure 7).
 - Torque all the fasteners to the following specifications:
 - 3/8-inch bolts to 31 N·m (23 ft-lb)
 - 1/2-inch bolts to 76 N·m (56 ft-lb)
 - M8 bolts to 25 N·m (19 ft-lb)
 - M12 bolts to 96 N·cm (71 ft-lb)



Parts

g284437

Ref.	Part Number	Qty.	Description	Ref.	Part Number	Qty.	Description
1	LTA12296	1	SKID PLATE WLDMT, KUBOTA SIDEKICK, 18+	7:2	HDW01748	4	NUT, 1/2-13, NYL INS, YZN
2	LTA12300	1	SIDE MNT, PS, KUBOTA SIDEKICK, 18+	7:3	HDW01755	4	HHCS, 1/2-13 X 2, GR5, YZN
3	LTA12305	1	SIDE MNT, DR, KUBOTA SIDEKICK, 18+	7:4	HDW01771	18	HHCS, 3/8-16 X 1-1/4, NC, GR5, YZN
4	LTA12309	1	WINCH PLT WDMT, KUBOTA SIDEKICK, 18+	7:5	HDW10661	4	HHCS, M12 X 1.25 X 45 MM, BIN 961, GR10
5	PBA12535	1	PUSHBEAM ASSY RT3, UTV, COMMON	7:6	HDW12292	4	HHCS, M8 X 1.25 X 40 MM, 8.8, SFH, YZN
6	LTA12299	2	PB SPACER, KUBOTA SIDEKICK, 18+	7:7	HDW12293	4	NUT, NYLOCK, M8 X 1.25, 8.8, FLANGE, YZN
7	HDW12294	1	FASTENER KIT, UC, KUBOTA SIDEKICK				
7:1	HDW01720	18	NUT, 3/8-16, NYL INS, YZN				