

BOSS Products limited consumer warranty and BOSS Products commercial warranty policies are located at www.BOSSPlow.com.

Patent www.ttcopats.com.

Installation

⚠ WARNING

Using a drill without proper eye protection may allow debris to enter the eye, causing injury.

When drilling, always wear eye protection.

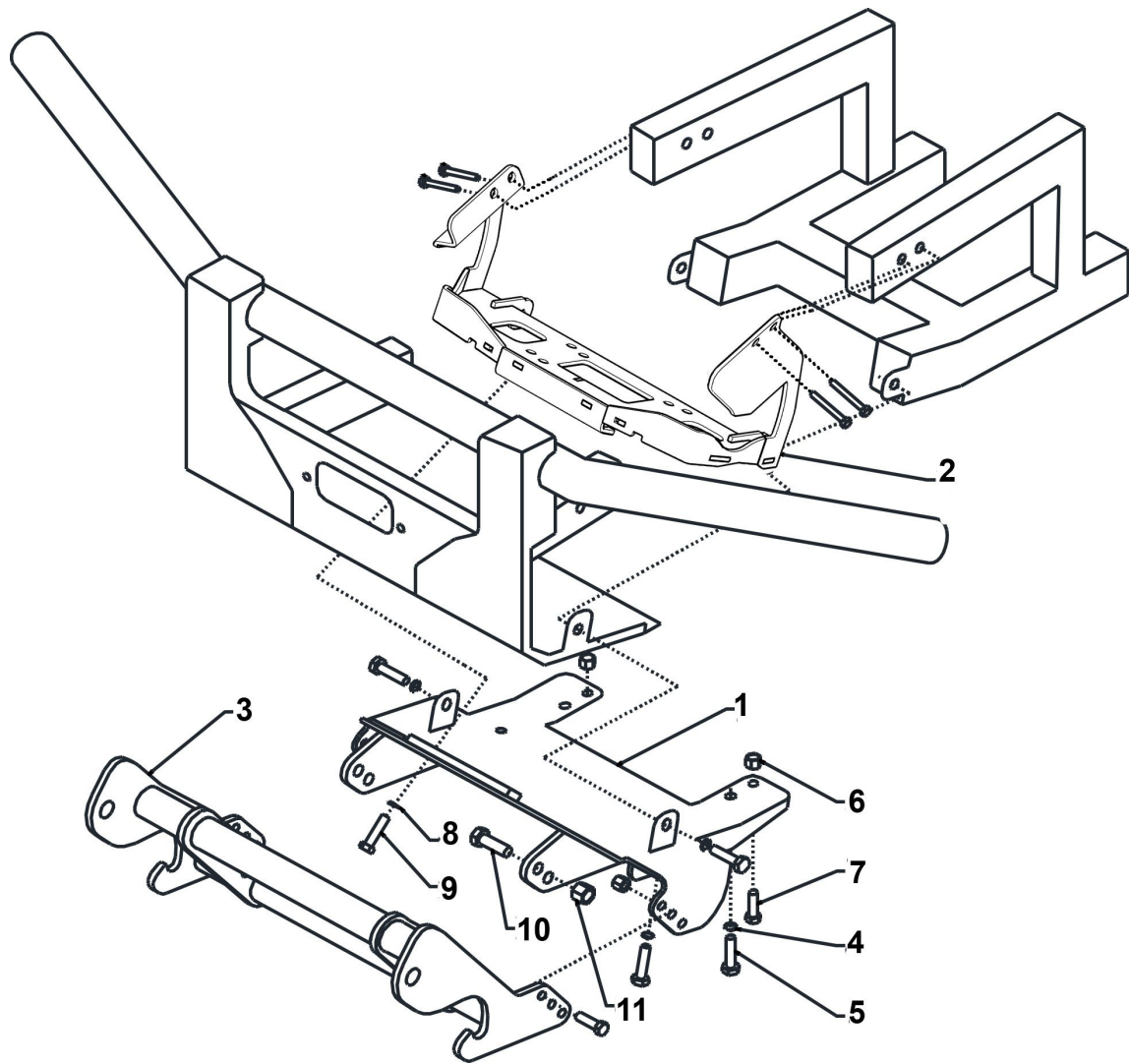
1. Park the machine on a level surface, shut off the engine, wait for all moving parts to stop, engage the parking brake, and remove the key.
2. Remove the 4 long existing hex bolts and 2 short hex key bolts attaching the factory steel bumper to the frame. Remove the screws and tabs that mount the skid-plate to the plastic bumper panels.
3. If there is a stock winch and mount, remove the assembly and then remove the winch from the stock mount.
4. Using the skid-plate assembly as a template, mark the 2 hole locations on the bottom side of the factory steel bumper skid-plate.
5. Using a drill bit (7/16 inch), drill out the 2 marked hole locations on the vehicle metal skid-plate.
6. Install the winch to the new winch mount.
7. Place the new winch mount behind the factory bumper. Slide the factory bumper into place, tucking the plastic bumper panels between the steel bumper skid-plate and the winch mount. Line up the holes and loosely install the 4 long existing hex head bolts.

Safety

- Always follow the vehicle manufacturer's recommendations relating to system installation.
 - Due to the variety of equipment that you can install using the undercarriage, ensure that the gross-vehicle-weight rating (GVWR) is not exceeded at any time. You may need to weigh the vehicle and add ballast or limit the payload of the vehicle to compensate. It is the operator's responsibility to verify that these ratings are not exceeded.
8. Install the skid-plate assembly to the vehicle frame and loosely secure with 4 bolts (M10) and 4 lock washers (M10).
 9. Loosely install the 2 bolts (3/8 inch) and 2 nylock nuts (3/8 inch) securing the 2 rear most holes of the skid-plate assembly to the vehicle frame.
 10. Utilizing the holes drilled earlier, loosely secure the factory bumper skid-plate and skid-plate assembly to the winch mount with 2 bolts (3/8 inch) and 2 lock washers (3/8 inch).
 11. Loosely secure the skid-plate assembly, factory bumper, and winch mount to the frame with 2 bolts (M10) and 2 lock washers (M10).
 12. Loosely install the push-beam assembly using 6 bolts (3/8 inch), 6 nylock nuts (3/8 inch), 4 bolts (1/2 inch), and 4 nylock nuts (1/2 inch). Refer to products *Owner's Manual* for the appropriate push-beam height.
 13. Torque the bolts that you previously installed in steps 8 through 12.
 - **1/2 inch bolts:** torque to 80 N·m (59 ft-lb)
 - **3/8 inch bolts:** torque to 35 N·m (26 ft-lb)
 - **M10 bolts:** torque to 52 N·m (38 ft-lb)

Recommended suspension settings: Increase the preload of the front springs to the highest setting. See the manufacturer's specifications for the proper adjustment procedure.





Parts

g434331

| Ref. | Part Number | Qty. | Description | Ref. | Part Number | Qty. | Description |
|------|-------------|------|---------------------|------|-------------|------|--------------------------------|
| 1 | LTA12311 | 1 | SKID-PLATE ASSEMBLY | 4 | HDW05595 | 6 | M10 LOCK WASHER |
| 2 | LTA12471 | 1 | WINCH MOUNT | 5 | HDW12324 | 6 | M10 X 1.25 X 40 HEX HEAD BOLT |
| 3 | PBA12535 | 1 | PUSH BEAM ASSEMBLY | 6 | HDW01720 | 8 | 3/8"-16 NYLON LOCK NUT |
| | HDW12320 | 1 | FASTENER KIT | 7 | HDW01771 | 8 | 3/8"-16 X 1-1/4" HEX HEAD BOLT |
| | | | | 8 | HDW01718 | 2 | 3/8" LOCK WASHER |
| | | | | 9 | HDW01754 | 2 | 3/8"-16 X 1-1/2" HEX HEAD BOLT |
| | | | | 10 | HDW01748 | 4 | 1/2"-13 NYLON LOCK NUT |
| | | | | 11 | HDW01728 | 4 | 1/2"-13 X 1-1/2" HEX HEAD BOLT |

Notes:

BOSS
S N O W P L O W