

BOSS Products limited consumer warranty and BOSS Products commercial warranty policies are located at www.BOSSPlow.com.

Patents pending.

Safety

- Always follow the vehicle manufacturer's recommendations relating to system installation.
- Due to the variety of equipment that you can install using the undercarriage, ensure that the gross-vehicle-weight rating (GVWR) is not exceeded at any time. You may need to weigh the vehicle and add ballast or limit the payload of the vehicle to compensate.

Installation

Determine the left and right sides of the machine from the normal operating position.

1. Park the machine on a level surface, shut off the engine, wait for all moving parts to stop, engage the parking brake, and remove the key.
2. Remove the 4 bolts attaching the front pumper to the vehicle.
3. Remove the 2 bolts attaching the front axle skid pan to the frame.
4. Using the plow skid plate as a guide, drill 4 holes (7/16 inch) in the vehicle bumper (Figure 1).

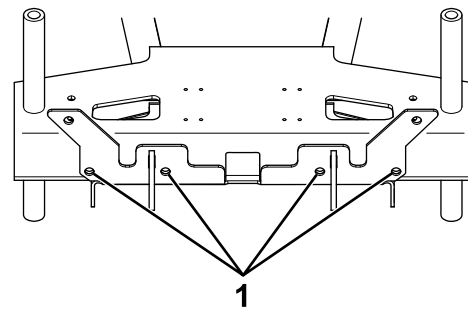


Figure 1

g263335

1. Drill here.

5. Using the mounting brackets as guides, drill 2 holes (7/16 inch) in the vehicle frame (Figure 2).

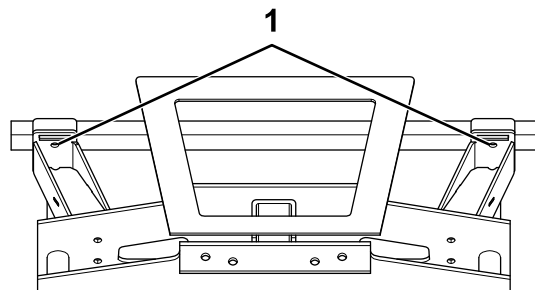


Figure 2

g263336

1. Drill here.

6. Loosely attach the top of the mounting brackets to the frame using 2 bolts (3/8 inch) and nuts (Figure 3).

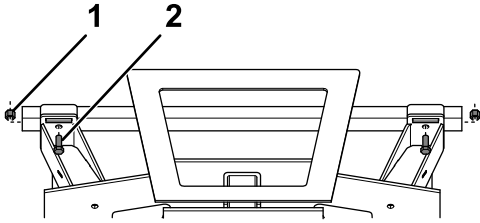


Figure 3

g263337

1. Nut (3/8 inch) 2. Bolt (3/8 inch)

7. Loosely attach the bottom of the mounting brackets to the vehicle using 4 bolts (3/8 inch) and nuts (Figure 4).

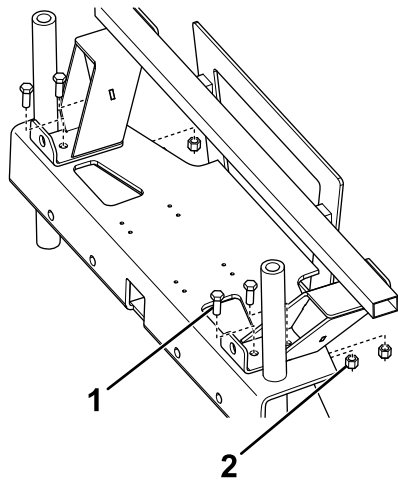


Figure 4

g263338

1. Bolt (3/8 inch) 2. Nut (3/8 inch)

8. Loosely attach the plow skid plate to the front bumper using 4 bolts (M12 x 45 mm) as shown in Figure 5.

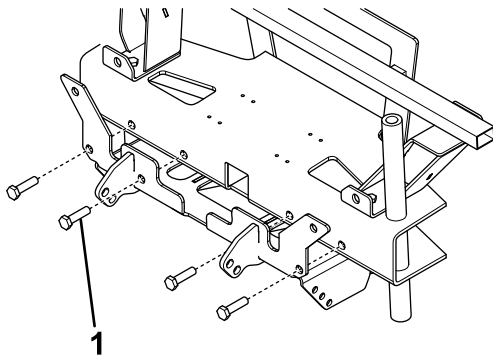


Figure 5

g263339

1. Bolt (M12 x 45 mm)

9. Loosely attach the plow skid plate to the front axle skid pan using 4 bolts (M12 x 30 mm) as shown in Figure 6.

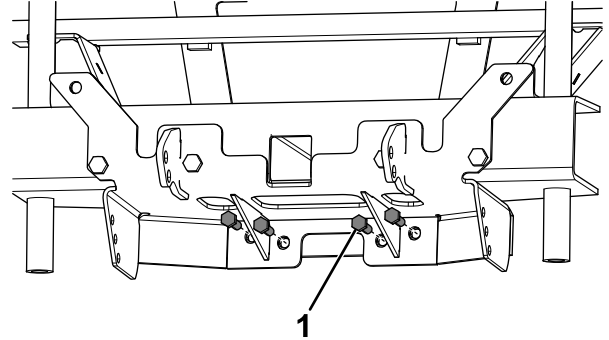


Figure 6

g263340

1. Bolt (M12 x 30 mm)

10. Loosely attach the plow skid plate to the mounting brackets using 2 bolts (1/2 inch) and locknuts (Figure 7).

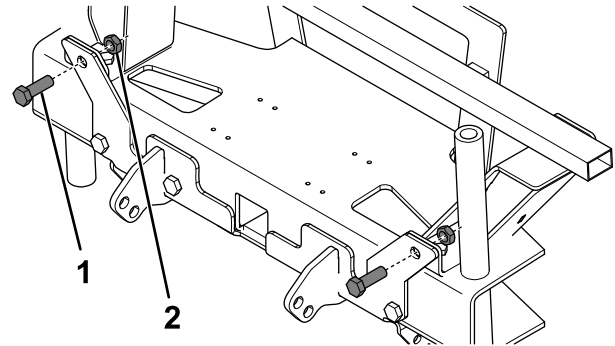


Figure 7

g263341

1. Bolt (1/2 inch) 2. Locknut (1/2 inch)

11. Loosely attach the outside of the pushbeam assembly to the skid plate using 6 bolts (3/8 inch) and locknuts (Figure 8).

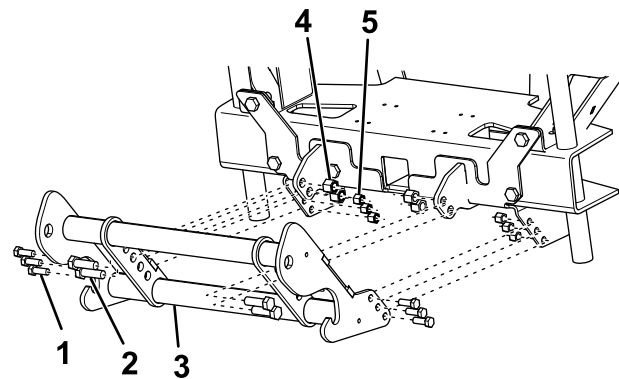
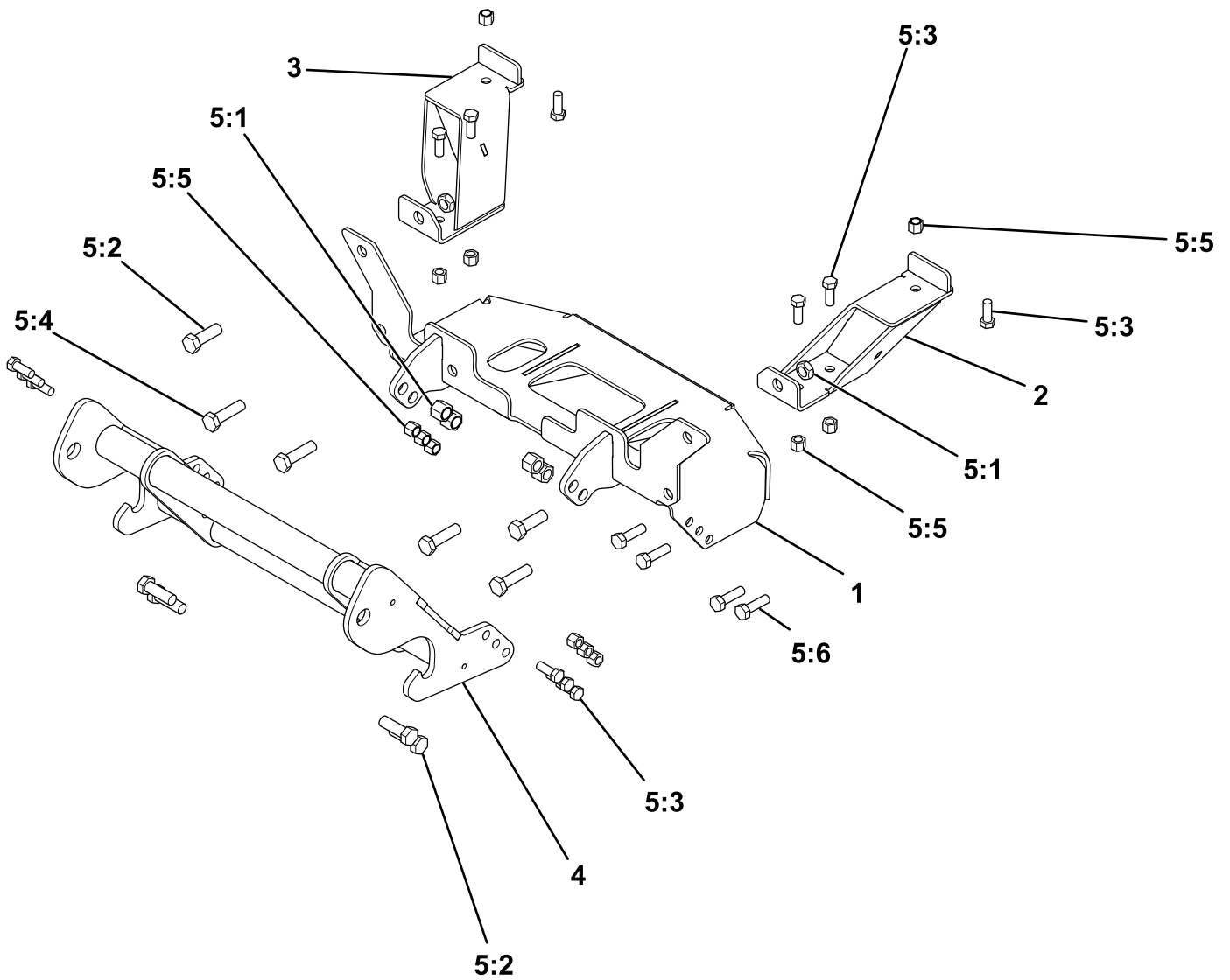


Figure 8

g263342

1. Bolt (3/8 inch) 4. Nut (1/2 inch)
 2. Bolt (1/2 inch) 5. Nut (3/8 inch)
 3. Pushbeam

12. Loosely attach the inside of the pushbeam assembly to the skid plate using 4 bolts (1/2 inch) and locknuts ([Figure 8](#)).
13. Torque all the fasteners to the following specifications:
 - 3/8-inch bolts to 31 N·m (23 ft-lb)
 - 1/2-inch bolts to 76 N·m (56 ft-lb)
 - M12 bolts to 96 N·cm (71 ft-lb)
14. Apply the BOSS decal to the front of the pushbeam assembly.



Parts

g259525

Ref.	Part Number	Qty.	Description
1	LTA12546	1	SKID PLATE ASSEMBLY
2	LTA13325	1	BRACKET, DR
3	LTA13330	1	BRACKET, PS
4	PBA12535	1	PUSHBEAM
5	HDW12579	1	FASTENER KIT, UC, UTV, KUBOTA
5:1	HDW01748	6	1/2"-13 NYLON LOCK NUT
5:2	HDW01728	6	1/2"-13 X 1-1/2" GR5 HEX HEAD BOLT
5:3	HDW01717	12	3/8"-16 Bolt
5:4	HDW10661	4	M12 X 1-1/4 X 45 MM, GR10 BOLT
5:5	HDW01720	12	3/8"-16 NYLON LOCK NUT
5:6	HDW12570	4	HHCS, M12 X 1-1/4 X 30 MM, BIN961, GR10.1, YZN