

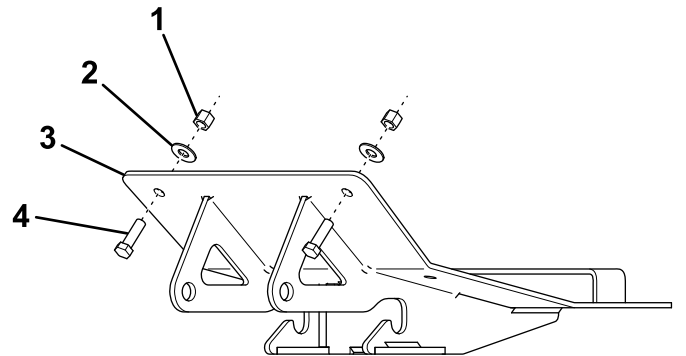
## Safety

- Always follow the vehicle manufacturer's recommendations relating to system installation.
- Due to the variety of equipment that you can install using the undercarriage, ensure that the gross-vehicle-weight rating (GVWR) is not exceeded at any time. You may need to weigh the vehicle and add ballast or limit the payload of the vehicle to compensate.

## Installation

Determine the left and right sides of the machine from the normal operating position.

1. Park the machine on a level surface, shut off the engine, wait for all moving parts to stop, engage the parking brake, and remove the key.
2. Remove the front vehicle skid plate.
3. Using a 7/16-inch drill bit, drill through the 2 holes on the front vehicle bumper where the skid plate was secured.
4. Attach the front of the undercarriage skid plate to the vehicle using 2 bolts, washers, and locknuts (Figure 1).

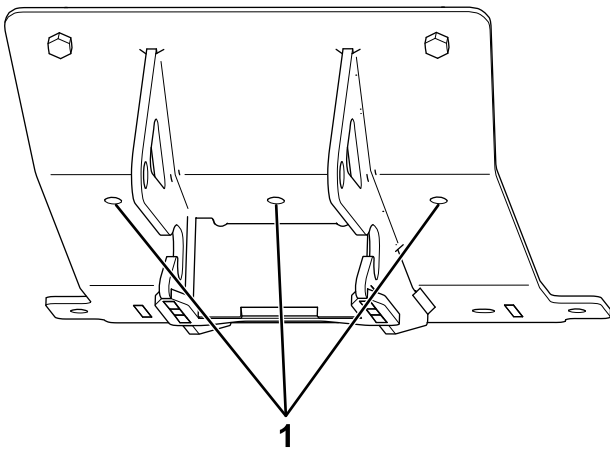


g277293

Figure 1

- |            |               |
|------------|---------------|
| 1. Locknut | 3. Skid plate |
| 2. Washer  | 4. Bolt       |

5. Using the skid plate as a template, mark the 3 holes in the center of the skid plate (Figure 2).



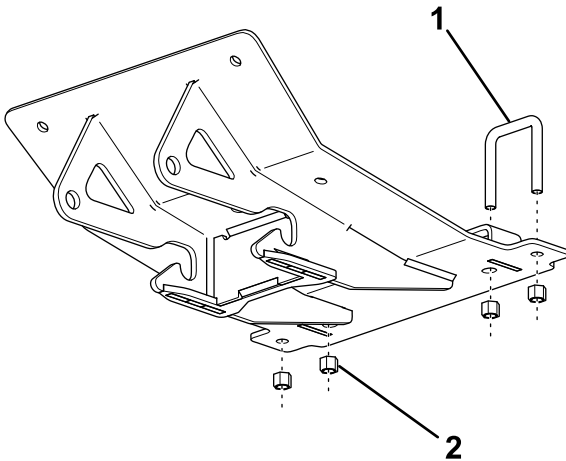
**Figure 2**

g277294

1. Mark and drill here.

6. Remove the skid plate from the vehicle and drill 3 holes at the marked locations using a 7/16-inch drill bit.

7. Loosely attach the rear of the undercarriage skid plate to the vehicle frame using 2 U-bolts and 4 locknuts (Figure 3).



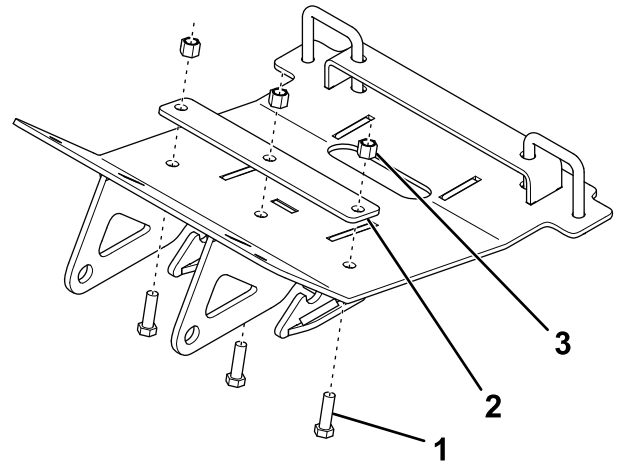
**Figure 3**

g277295

1. U-bolt

2. Locknut

8. Loosely attach the center of the undercarriage skid plate to the vehicle frame using 3 bolts, a backer plate, and 3 locknuts (Figure 4). The vehicle frame goes between the backer plate and the skid plate.



**Figure 4**

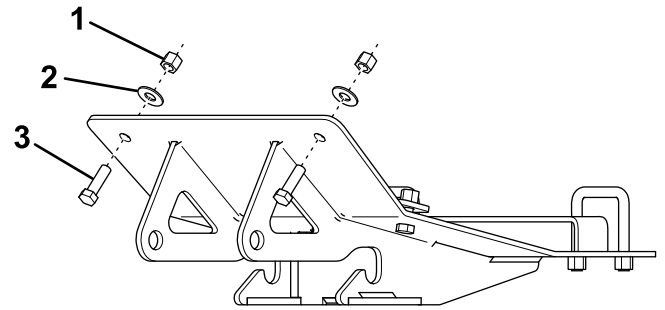
g277296

1. Bolt

2. Backer plate

3. Locknut

9. Loosely attach the front of the undercarriage skid plate to the vehicle using 2 bolts, washers, and locknuts (Figure 5).



**Figure 5**

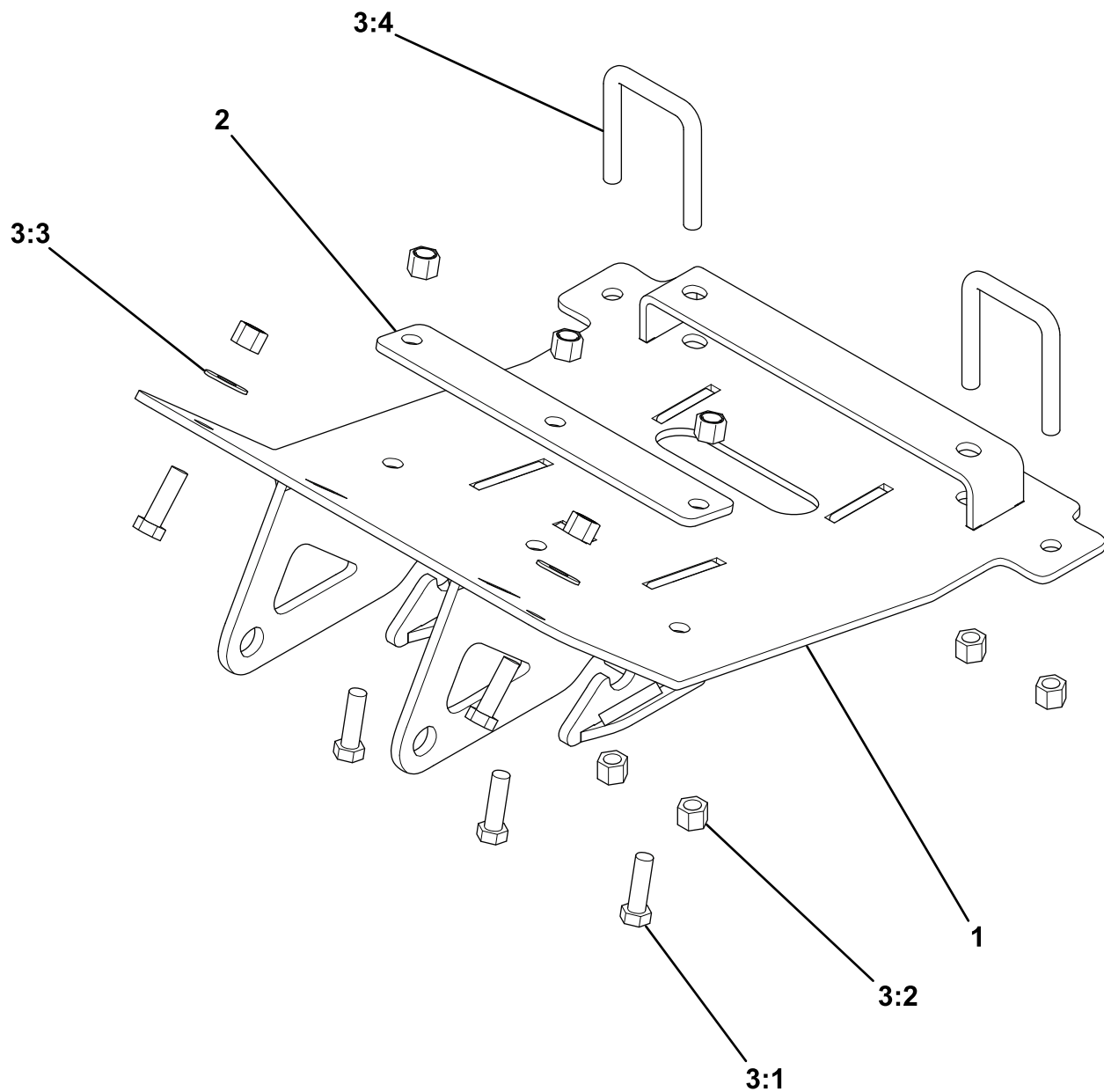
g277297

1. Locknut

2. Washer

3. Bolt

10. Torque all fasteners to 31 N·m (23 ft-lb).



**Parts**

g277292

| Ref. | Part Number | Qty. | Description                        |
|------|-------------|------|------------------------------------|
| 1    | LTA13285    | 1    | SKID PLATE ASSEMBLY                |
| 2    | LTA13228    | 1    | BACKER PLATE                       |
| 3    | HDW13222    | 1    | FASTENER KIT                       |
| 3:1  | HDW01771    | 5    | 3/8"-16 X 1-1/4" GR5 HEX HEAD BOLT |
| 3:2  | HDW01720    | 9    | 3/8"-16 NYLON LOCK NUT             |
| 3:3  | HDW01733    | 2    | 3/8" FLAT WASHER                   |
| 3:4  | HDW13229    | 2    | 3/8"-16 X 2" X 2-5/8" U-BOLT       |

**BOSS**  
S N O W P L O W