

BOSS Products limited consumer warranty and BOSS Products commercial warranty policies are located at [www.BOSSPlow.com](http://www.BOSSPlow.com).

Patent [www.ttcopats.com](http://www.ttcopats.com).

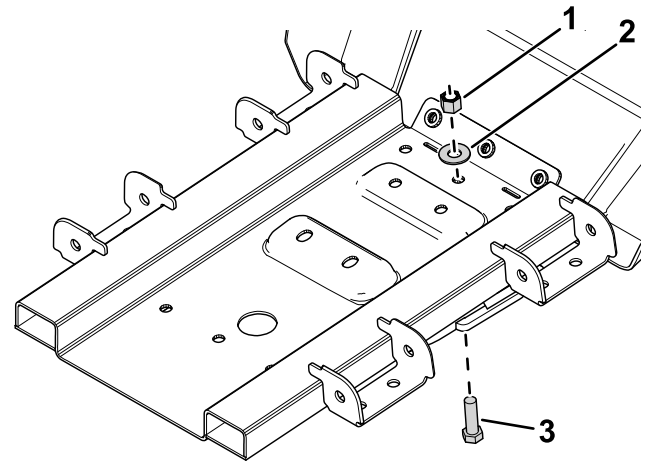
## Safety

- Always follow the vehicle manufacturer's recommendations relating to system installation.
- Due to the variety of equipment that you can install using the undercarriage, ensure that the gross-vehicle-weight rating (GVWR) is not exceeded at any time. You may need to weigh the vehicle and add ballast or limit the payload of the vehicle to compensate.

## Installation

**Note:** Determine the left and right sides of the machine from the normal operating position.

1. Park the machine on a level surface, shut off the engine, wait for all moving parts to stop, engage the parking brake, and remove the key.
2. Remove two existing screws from vehicle upper bumper screen and set aside.
3. Remove three existing screws from vehicle bumper guard on backside of bumper and set aside.
4. Use a bolt, nut, and a flat washer to secure the skid plate to the vehicle frame ([Figure 1](#)).



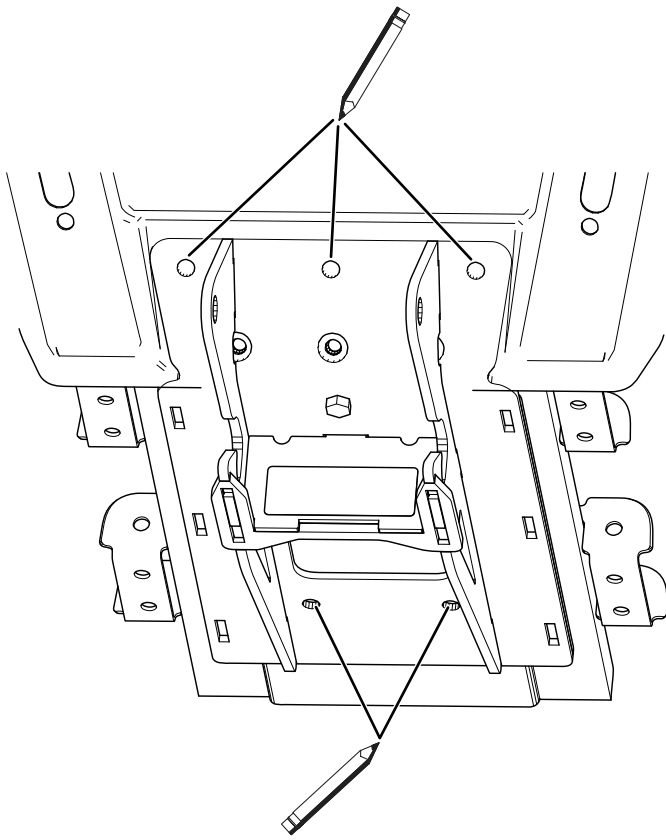
g347301

**Figure 1**

- |                |         |
|----------------|---------|
| 1. Nut         | 3. Bolt |
| 2. Flat washer |         |

5. Mark the following hole locations on the vehicle frame ([Figure 2](#)):
  - 3 hole locations on the front of the vehicle front bumper
  - 2 on the metal skid plate underneath



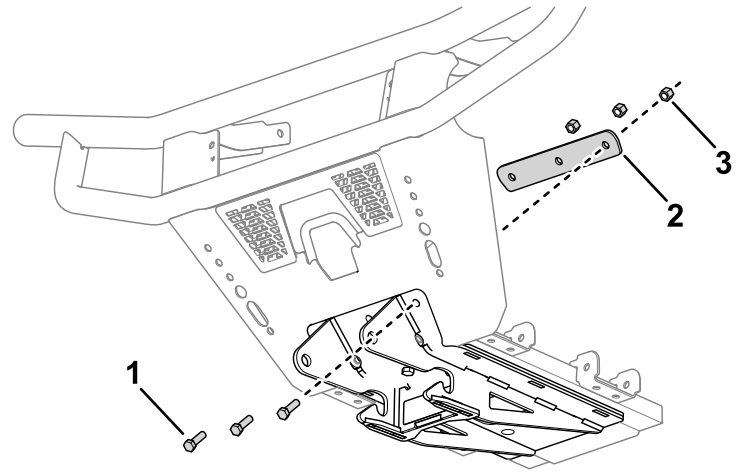


**Figure 2**

g347300

6. Remove the skid plate.
7. Use a 7/16-inch drill bit to drill through the 5 marked hole locations.
8. Use 3 bolts, 3 nuts, and a backer plate to position and loosely attach the skid plate (**Figure 3**).

The backer plate should be located opposite of the skid plate on the bumper.

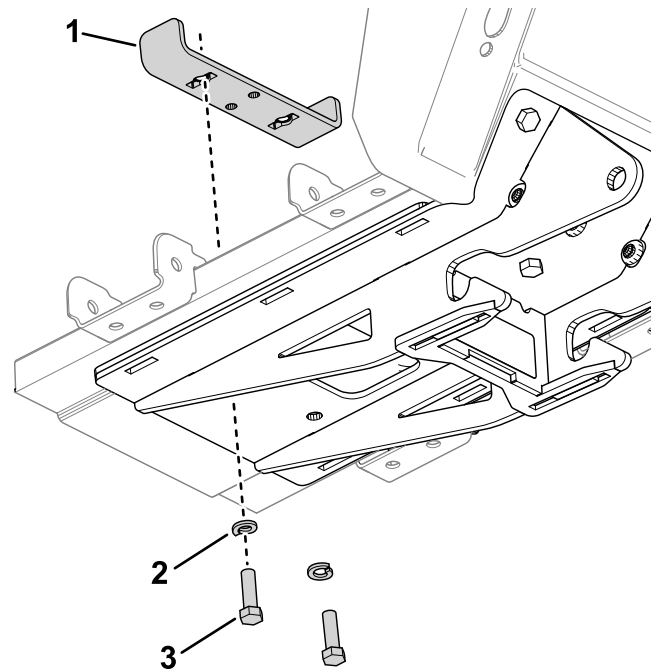


**Figure 3**

g347379

- |               |        |
|---------------|--------|
| 1. Bolt       | 3. Nut |
| 2. Skid plate |        |

9. Place the nut plate on the top side of the skid plate and align it with the mount holes in the skid plate.
10. Use 2 bolts and 2 split-lock washers to attach the rear of the skid plate to the vehicle frame (**Figure 4**).

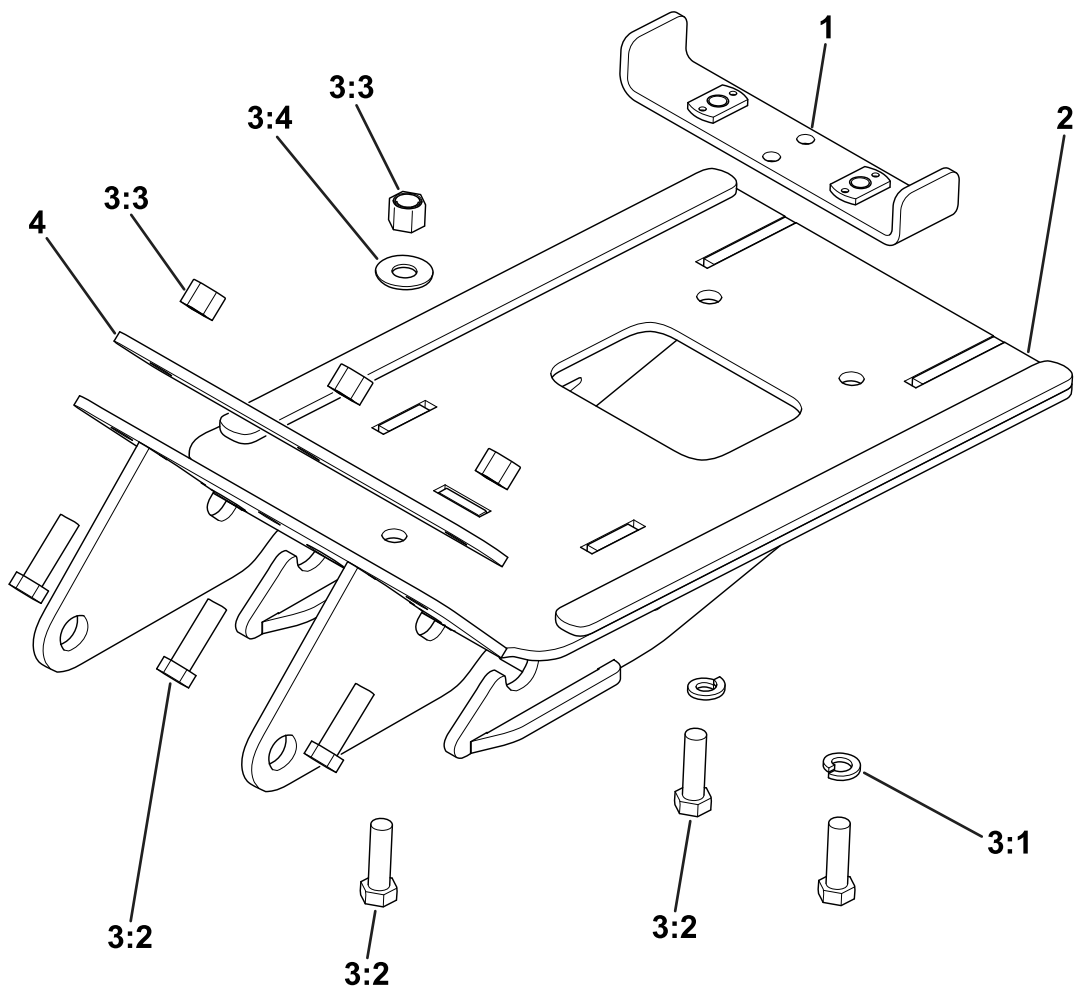


**Figure 4**

g347380

- |                      |         |
|----------------------|---------|
| 1. Nut plate         | 3. Bolt |
| 2. Split-lock washer |         |

11. Torque all the fasteners to 31 N·m (23 ft-lb).



**Parts**

g347230

Ref.	Part Number	Qty.	Description
1	LTA13304-03	1	NUT PLT, UC, UTV, POL RNGR, MID, 10
2	LTA13301	1	SKID PLT ASSM, UC, POL, RNGR, MID, 10+
3	HDW13372	1	KIT-HDW, UC, UTV, POL RZR 900, 50, 15
3:1	HDW01718	2	WASHER, 3/8, SPLIT LOCK, YZN
3:2	HDW01771	6	HHCS, 3/8-16 X 1-1/4, NC, GR5, YZN
3:3	HDW01720	4	NUT, 3/8-16, NYL INS, YZN
3:4	HDW01733	2	WASHER, 3/8, USS FLAT, YZN
4	LTA13192-03	1	BKR PLT, UC, UTV, POL RNGR, MID, 1

**BOSS**  
S N O W P L O W