

Safety

- Always follow the vehicle manufacturer's recommendations relating to system installation. For recommended vehicle models, refer to the *BOSS Snowplow Application Chart and Selection Guide*.
- Never disable, remove, or relocate any sensors or other components related to the operation of the air bags.
- To comply with federal regulations and to ensure a safe vehicle, do not exceed the front gross-axle-weight rating (FGAWR), rear gross-axle-weight rating (RGAWR), and the gross-vehicle-weight rating (GVWR) at any time.
- Due to the variety of equipment that you can install on the vehicle and undercarriage, do not exceed the front gross-axle-weight rating (FGAWR), rear gross-axle-weight rating (RGAWR), and the gross-vehicle-weight rating (GVWR) at any time. This may require weighing the vehicle and adding ballast as necessary. It may also limit the payload capacity of the vehicle.

Installation

1. Park the vehicle on a level surface, engage the parking brake, shut off the engine, and remove the key.
2. Remove the lower bumper from the vehicle.

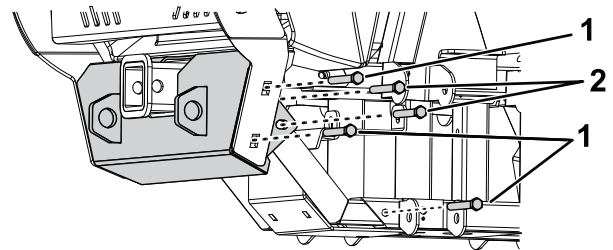


Figure 1

g359721

1. Save this hardware
2. Discard this hardware

3. Install the skid plate onto the vehicle using the hardware saved in the step above, 2 bolts (3/8-16 x 3 inches), 2 bolts (3/8-16 x 2 3/4 inches), and 4 nuts (3/8 inch).

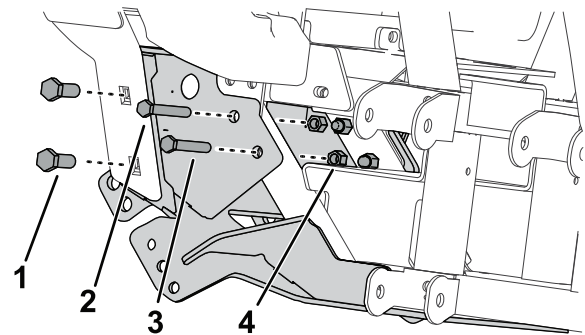


Figure 2

g359719

1. Existing hardware
2. Bolt (3/8-16 x 3 inches)
3. Bolt (3/8-16 x 2 3/4 inches)
4. Nut (3/8 inch)

4. Secure the rear of the skid plate to the vehicle using the existing hardware.

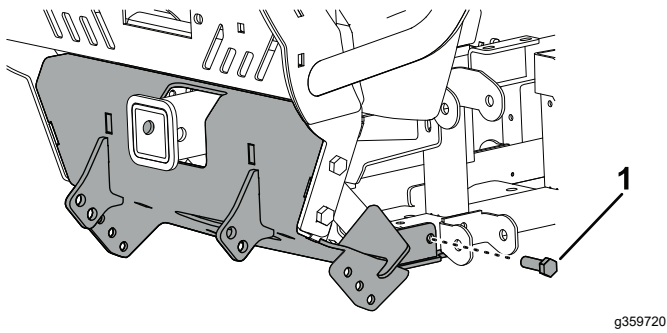


Figure 3

- Existing hardware

- Secure the bottom of the skid plate to the vehicle using 2 bolts (3/8 x 1-1/2 inches), 2 washers, and 2 nuts (3/8 inch).

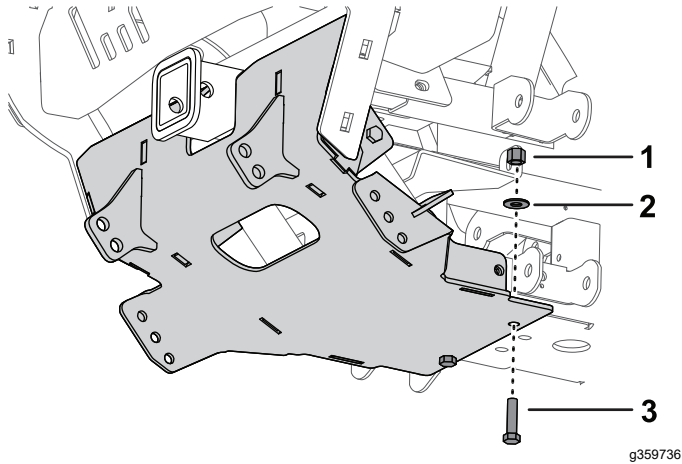


Figure 4

- Bolt (3/8 x 1-1/2 inches)
- Washer
- Nut (3/8 inch)

- Secure the inside of the pushbeam using 4 bolts (1/2-13 x 1-1/2 inches) and 4 nuts (1/2 inch).

Note: Refer to the Recommended Pushbeam Height table below.

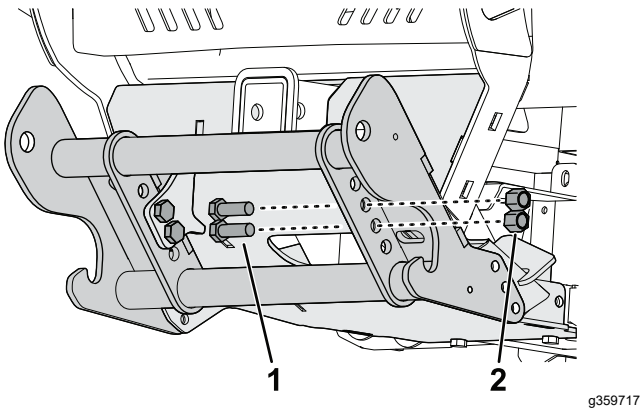


Figure 5

- Bolt (1/2-13 x 1-1/2 inches)
- Nut (1/2 inch)

- Secure the outside of the pushbeam using 6 bolts (3/8-16 x 1-1/4 inches) and 6 nuts (3/8 inch).

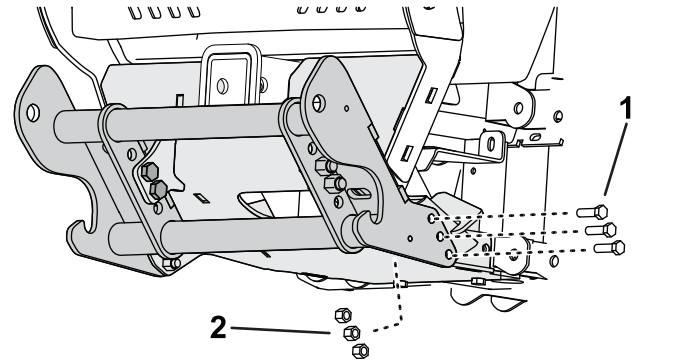


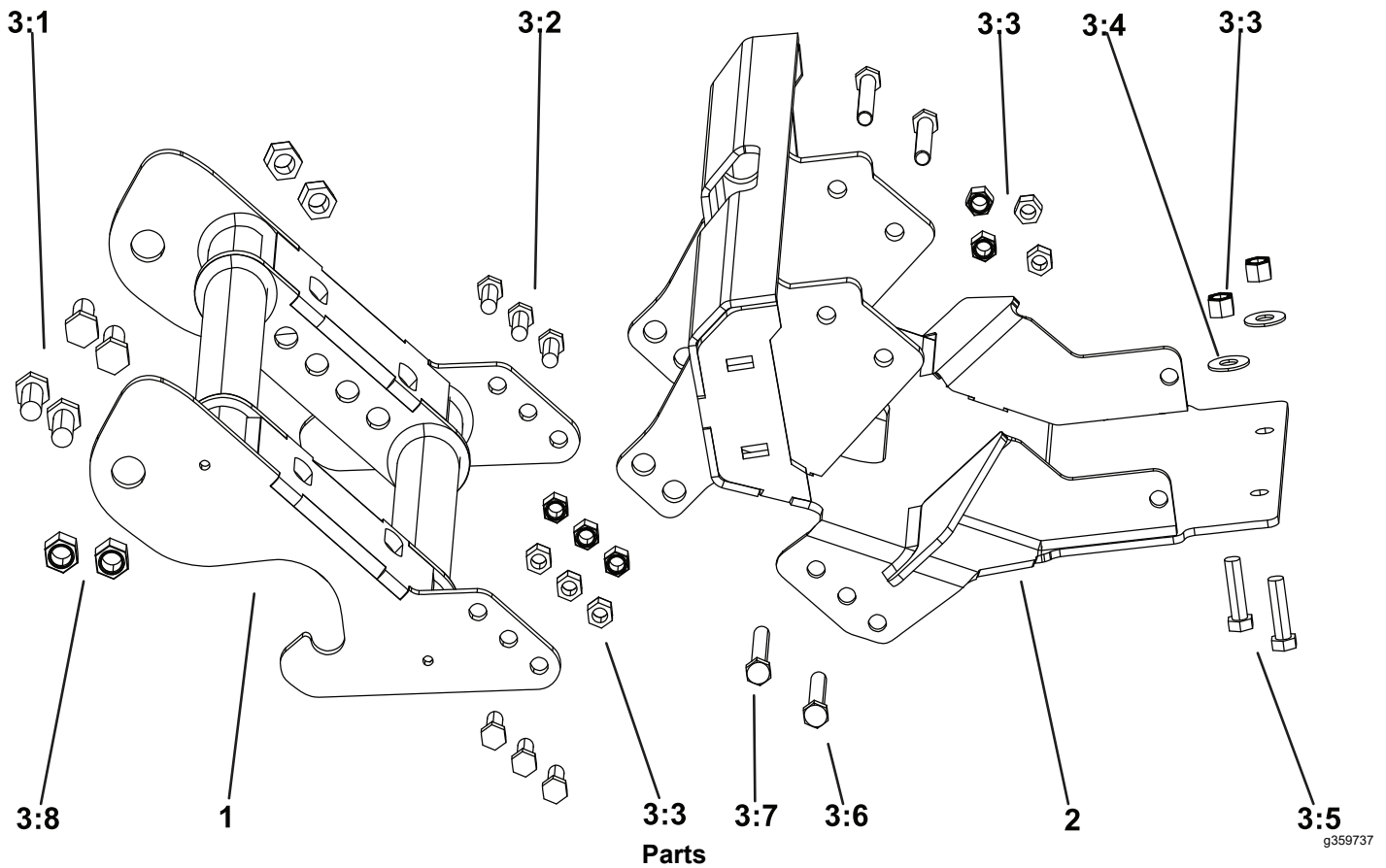
Figure 6

- Bolt (3/8-16 x 1-1/4 inches)
- Nut (3/8 inch)

Recommended Pushbeam Height

Plow Type	Recommended Pushbeam Height
Rear Mounted Plow	48 cm (19 inches)
UTV	44-1/2 cm (17-1/2 inches)
Heavy Duty	42 cm (16-1/2 inches)
Standard Duty	39 cm (15-1/2 inches)
HTX/Sport Duty	37 cm (14-1/2 inches)

- Torque all of the fasteners to the following specifications:
 - 3/8-inch bolts: torque to 31 N·m (23 ft-lb)
 - 1/2-inch bolts: torque to 76 N·m (56 ft-lb)



Parts

Ref.	Part Number	Qty.	Description	Ref.	Part Number	Qty.	Description
1	PBA12535-03	1	PUSHBEAM ASM RT3, UTV,COMMON	3:1	HDW01728	4	HHCS,1/2-13X1-1/2,NC,GR5,YZN
2	LTA14761-03	1	SKID PLT, WLDMT, INTIMIDATOR GC1	3:2	HDW01771	6	HHCS,3/8-16X1-1/4,NC,GR5,YZN
3	HDW14775	1	FASTNER KIT, UC, INTIMIDATOR,GC1	3:3	HDW01720	12	NUT,3/8-16,NYL INS,YZN
				3:4	HDW01733	2	WASHER,3/8,USS FLAT,YZN
				3:5	HDW01754	2	HHCS,3/8X1 1/2 GR8 YELLOW ZDC
				3:6	323-13	2	SCREW-HH [.375-16 X 2.750, GR5, YZ
				3:7	323-14	2	SCREW-HH [.375-16 X 3, GR5, YZ]
				3:7	HDW01748	4	NUT,1/2-13, NYL INS,YZN

BOSS
S N O W P L O W