

Safety

- Always follow the vehicle manufacturer's recommendations relating to system installation.
- Due to the variety of equipment that you can install using the undercarriage, ensure that

the gross-vehicle-weight rating (GVWR) is not exceeded at any time. You may need to weigh the vehicle and add ballast or limit the payload of the vehicle to compensate.

Installation

1. Park the machine on level ground, engage the parking brake, shut off the engine, and remove the key.
2. Remove the 4 bolts securing the front skid plate to the bumper.
3. Remove the 2 bolts securing the bottom skid plate to the vehicle frame.
4. Loosely attach the plow and vehicle front skid plate using 2 hex head bolts (3/8 x 1-1/2 inches) and 2 locknuts (3/8 inch).

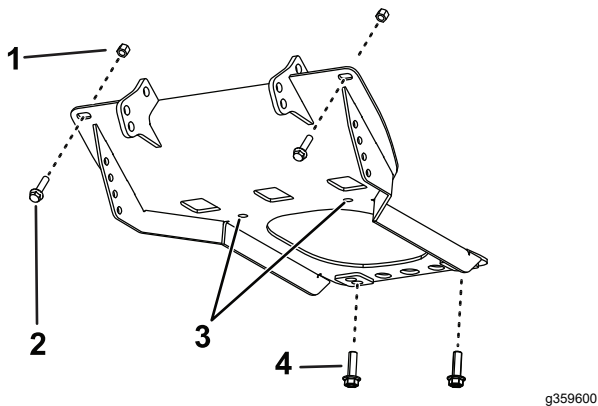


Figure 1

- | | |
|---------------------------------------|------------------------------|
| 1. Hex head bolt (3/8 x 1-1/2 inches) | 3. Drill guide holes. |
| 2. Locknut (3/8 inch) | 4. Bolt (M12 x 1-3/4 inches) |

5. Loosely attach the plow skid plate and vehicle bottom skid plate to the vehicle frame using 2 bolts (M12 x 1-3/4 inches).

⚠ WARNING

Using a drill without proper eye protection may allow debris to enter the eye, causing injury.

When drilling, always wear eye protection.

6. Using the plow skid plate as a guide, drill out the 2 holes in the vehicle bottom skid plate to 7/16-inch (Figure 1).
7. Secure the plow skid plate and vehicle bottom skid plate to the vehicle frame using 2 bolts (3/8 x 1-1/2 inch) and 2 locknuts (3/8 inch).

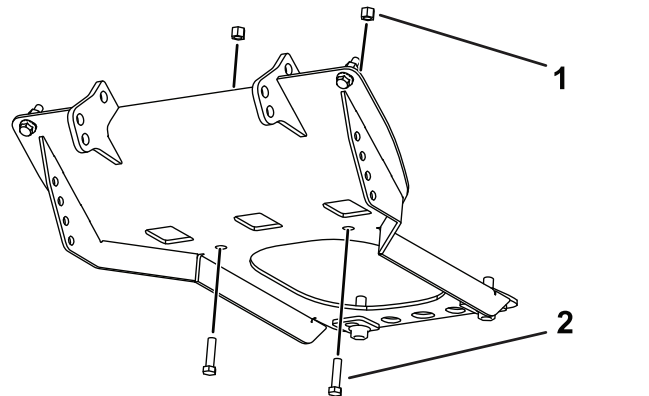


Figure 2

- | | |
|-----------------------|----------------------------|
| 1. Locknut (3/8 inch) | 2. Bolt (3/8 x 1-1/2 inch) |
|-----------------------|----------------------------|

8. Tighten all of the installed fasteners and torque the bolts to:
 - 3/8 inch bolts: 31 N·m (23 ft-lb)
 - M12 bolts: 96 N·m (71 ft-lb)



9. Remove the 2 upper bolts and nuts securing the bumper to the vehicle frame.
10. Insert a bumper shim on each side of the bumper.
11. Secure the mounting brackets to the plow skid plate and vehicle using 2 bolts (1/2-13 x 1-1/2 inches) and 2 locknuts.

Note: Torque the bolts to 31 N·m (23 ft-lb).

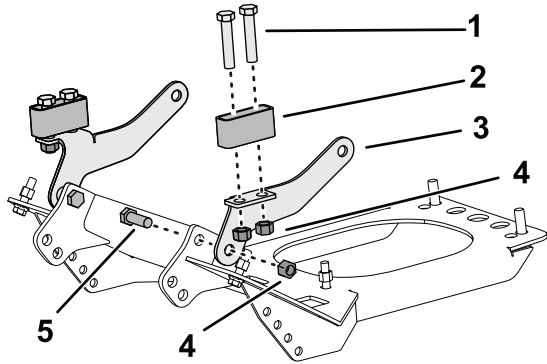


Figure 3

g359602

- | | |
|---------------------------------|---------------------------------|
| 1. Bolt (1/2-13 x 2-1/2 inches) | 4. Locknut |
| 2. Bumper shim | 5. Bolt (1/2-13 x 1-1/2 inches) |
| 3. Mounting bracket | |

12. Secure the bumper shims to the mounting brackets using 4 bolts (1/2-13 x 2-1/2 inches) and 4 top locknuts.

Note: Torque the bolts to 76 N·m (56 ft-lb).

13. Mount the inside of the pushbeam to the plow skid plate using 4 bolts (1/2-13 x 1-1/2 inches) and 4 locknuts (1/2 inch).

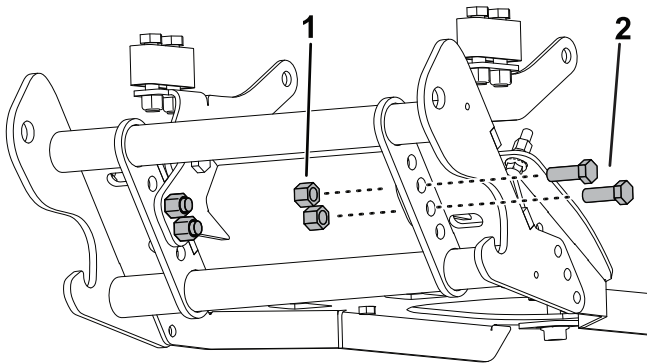


Figure 4

g359603

- | | |
|-----------------------|-------------------------------|
| 1. Locknut (1/2 inch) | 2. Bolt (1/2-13 x 1-1/2 inch) |
|-----------------------|-------------------------------|

14. Mount the pushbeam to the plow skid plate using 6 bolts (3/8 x 1 inch) and 6 locknuts (3/8 inch).

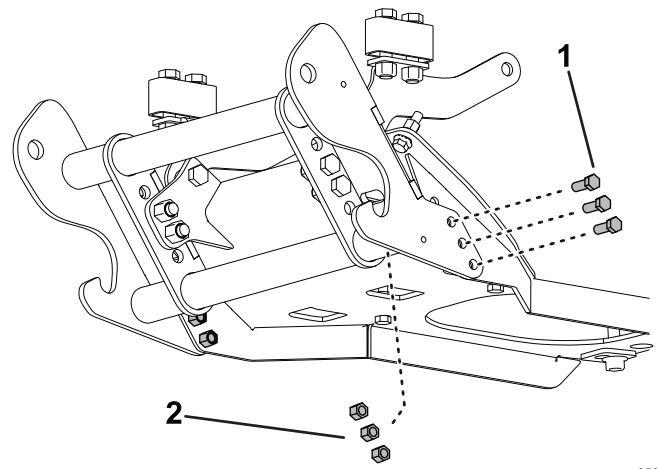
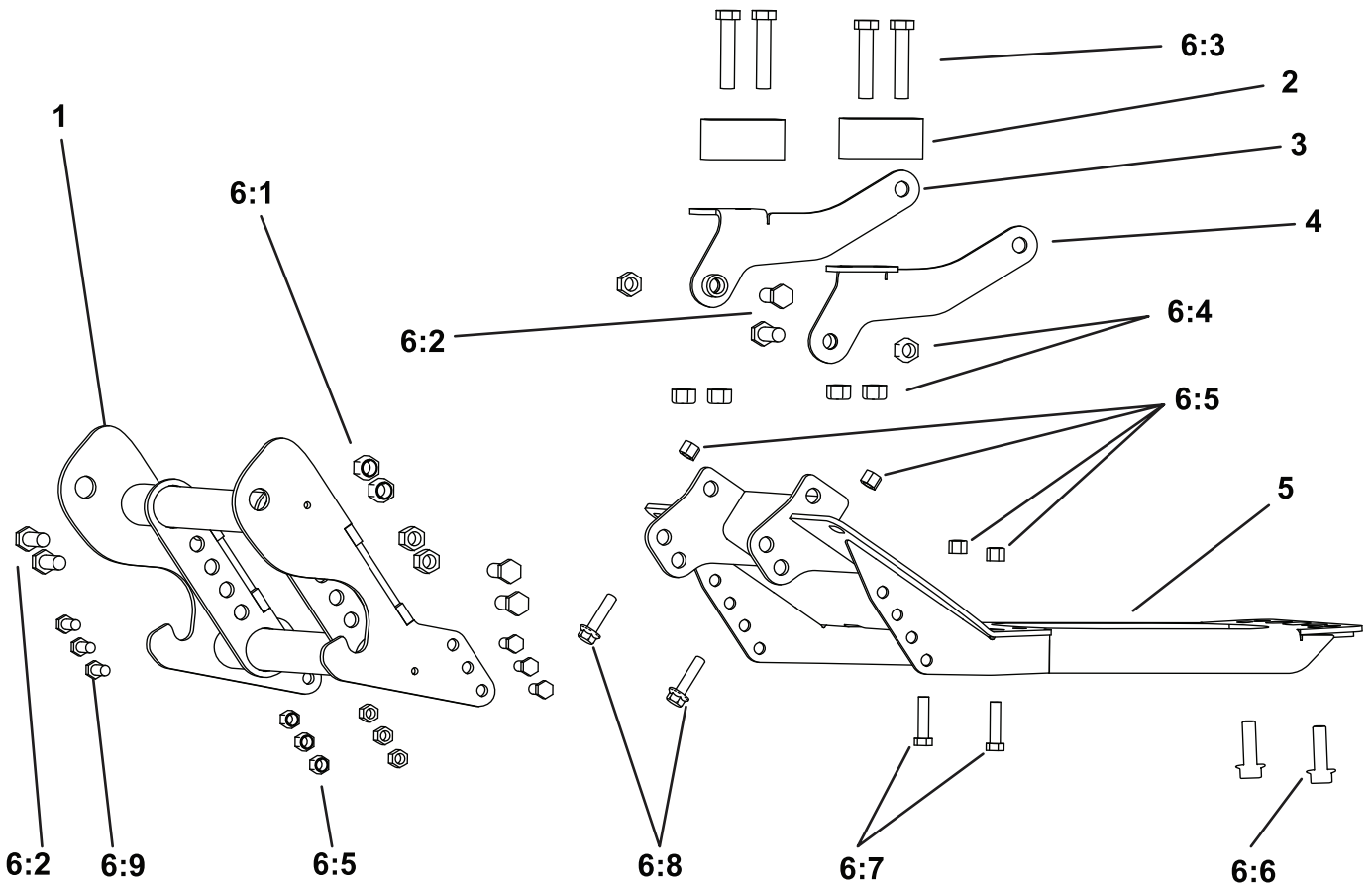


Figure 5

g359604

- | | |
|-----------------------|------------------------|
| 1. Locknut (3/8 inch) | 2. Bolt (3/8 x 1 inch) |
|-----------------------|------------------------|

15. Torque the 1/2-inch bolts to 76 N·m (56 ft-lb), and torque the 3/8-inch bolts to 31 N·m (23 ft-lb).
16. Apply the BOSS decal to the top tube on the vehicle bumper.



g359605

Ref.	Part Number	Qty.	Description
1	PBA12535	1	PUSHBEAM ASSEMBLY
2	LTA12648	2	BUMPER SHIM
3	PBA12637	1	MOUNT BRACKET, PASSENGER SIDE
4	PBA12636	1	MOUNT BRACKET, DRIVERS SIDE
5	LTA12462	1	SKID PLATE ASSEMBLY
6	HDW12461	1	FASTENER KIT, UC, UTV, JOHN DEERE XUV, 2011+

Ref.	Part Number	Qty.	Description
6:1	HDW01748	4	1/2"-13 NYLON LOCK NUT
6:2	HDW01728	6	1/2"-13X1-1/2" GR5 HEX HEAD BOLT
6:3	HDW05917	4	1/2"-13X2-1/2" GR5 HEX HEAD BOLT
6:4	HDW05597	6	1/2"-13 OVAL TOP LOCK NUT
6:5	HDW01720	10	3/8"-16 NYLON LOCK NUT
6:6	AU100830	2	SCREW [M12 X 1.75 X 40, GR10.9
6:7	HDW01719	2	3/8"-16 X 1-1/2" GR5 HEX HEAD BOLT
6:8	114-4681	2	SCREW-HHF [3/8-16 X 1.50, YZ
6:9	HDW01717	6	3/8"-16 X 1" GR5 HEX HEAD BOLT

BOSS

S N O W P L O W