

Part No. MSC17651

Part No. MSC17652

Part No. MSC17653

Part No. MSC19525

### Installation Instructions

## Installation

### Preparing the Machines

1. Park your vehicle on a level surface, engage the parking brake, shut off the engine, and remove the keys.
2. Disconnect the spreader power/ground cable from the wire harness.

### Installing the Halogen or LED Light Kit on Forge Spreaders

1. Remove the spinner assembly; refer to your spreader *Owner's Manual*.
2. Remove the bolts securing the rear cover to the hopper.

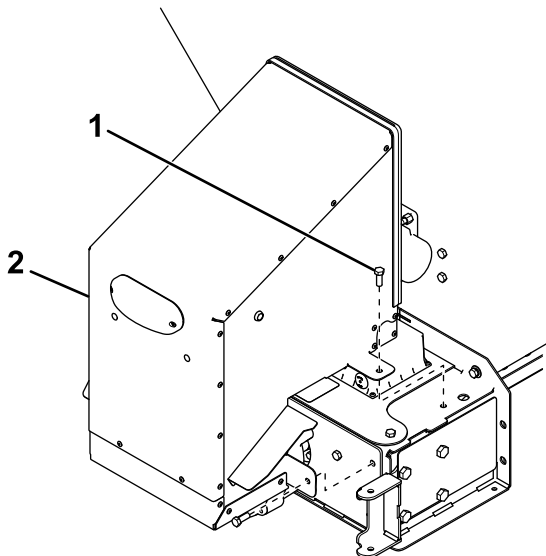


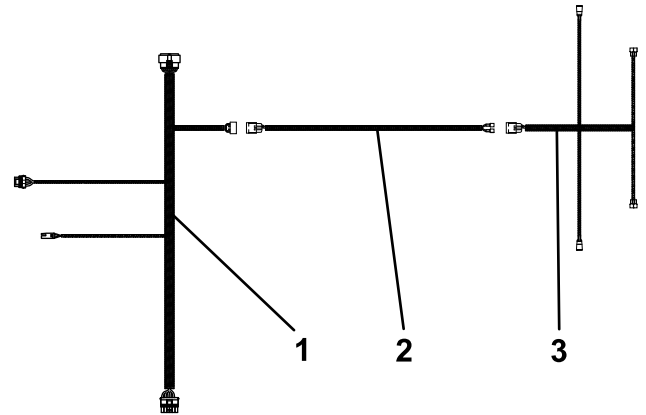
Figure 1

g223387

1. Bolt
2. Rear cover

3. Carefully pull away the rear cover and unplug the cover harness from the control module.

4. Disconnect the dump switch cable from the dump switch and the cover harness and discard it.



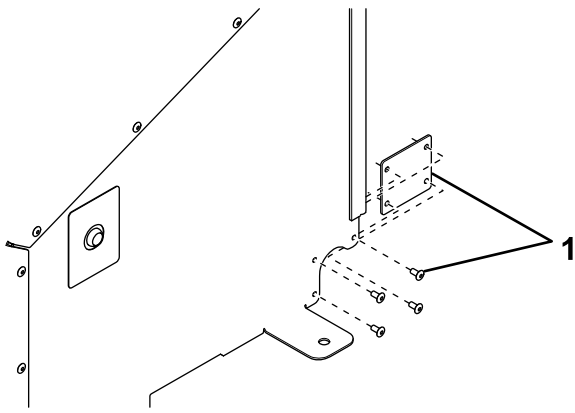
g226378

Figure 2

1. Rear cover harness
2. Dump switch cable
3. Kit wire harness

5. Connect the kit wire harness to the cover harness using the connector from the previously removed dump switch cable (Figure 2).
6. Connect the orange and white/black spade connectors to the dump switch (Figure 2).
7. Remove and discard the grommet cover plate on the right side of the rear cover.

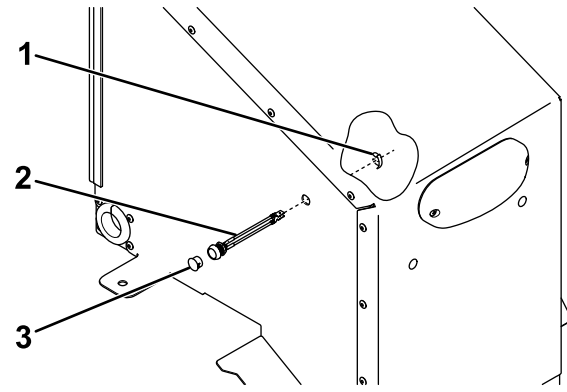




**Figure 3**

g226379

1. Discard

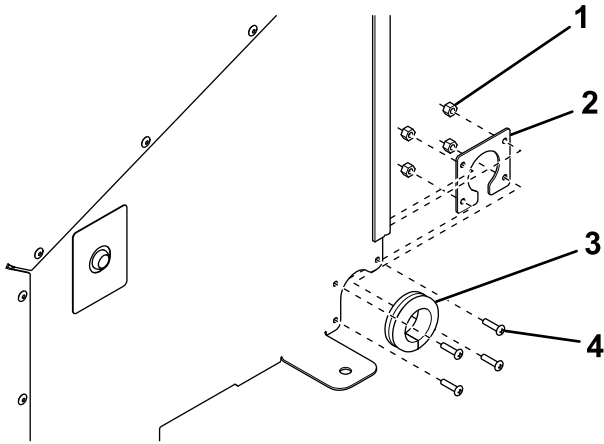


**Figure 5**

g226381

1. Retaining clip
2. Light button assembly
3. Plug (discard)

8. Secure the grommet plate to the inside of the rear cover using 4 bolts (#10 x 3/4 inch) and nylon nuts.



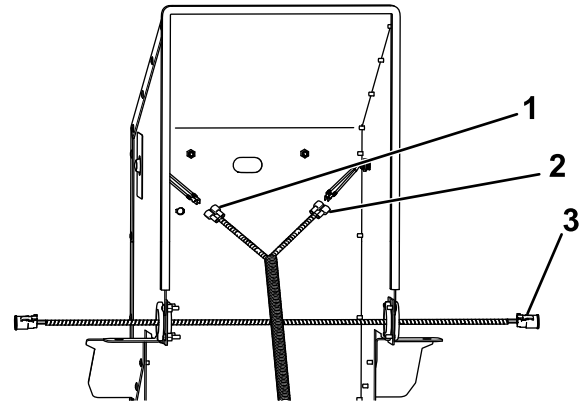
**Figure 4**

g226380

1. Nylon nut (#10)
2. Grommet plate
3. Rubber grommet
4. Bolt (#10 x 3/4 inch)

9. Insert the rubber grommet into the grommet plate (Figure 4).
10. Remove and discard the plug opposite of the dump switch on the rear cover.

11. Insert the light button assembly through the hole and secure it in place with a retaining clip (Figure 5).
12. Connect the white and brown spade connectors on the kit wire harness to the light button.



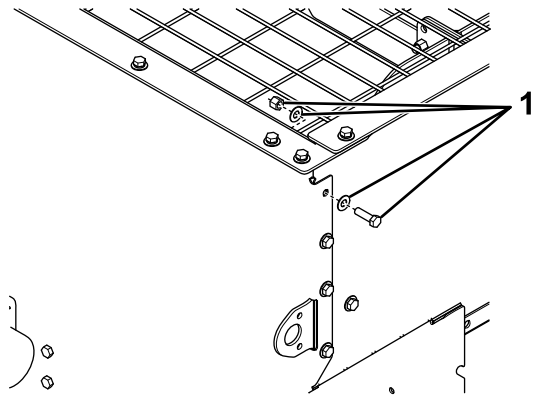
**Figure 6**

g226382

1. Orange and white/black spade connector (dump switch)
2. White and brown spade connector (light button)
3. Light connector

13. Route the light connectors through the grommets on either side of the rear cover (Figure 6).
14. Apply the light button decal over the light button.
15. Bring the rear cover close to the spreader and connect the cover harness to the control module.
16. Secure the rear cover to the spreader with the previously removed bolts and washers.

- Remove and discard the top fasteners on the back end of the hopper sides as shown in [Figure 7](#).

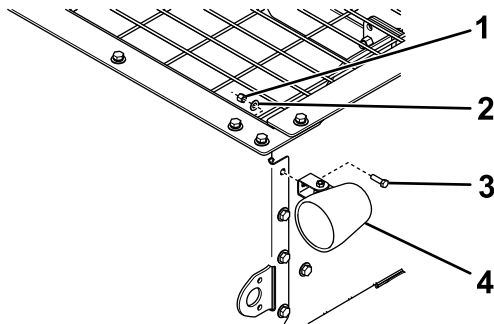


**Figure 7**

g226383

- Discard

- Secure the lights to the spreader hopper using 2 bolts (5/16 inch), washers, and nuts.



**Figure 8**

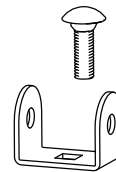
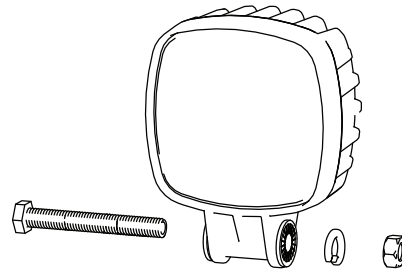
g226384

- |                       |                     |
|-----------------------|---------------------|
| 1. Nut (5/16 inch)    | 3. Bolt (5/16 inch) |
| 2. Washer (5/16 inch) | 4. Light            |

- Connect the wire harness to the lights.
- Attach the previously removed spinner assembly; refer to your spreader *Owner's Manual*.
- Connect the spreader power/ground cable to the main wire harness.

## Installing the Kit on VBX Spreaders

### Disconnecting the Light Assembly (VBX 3000 Installation Only)

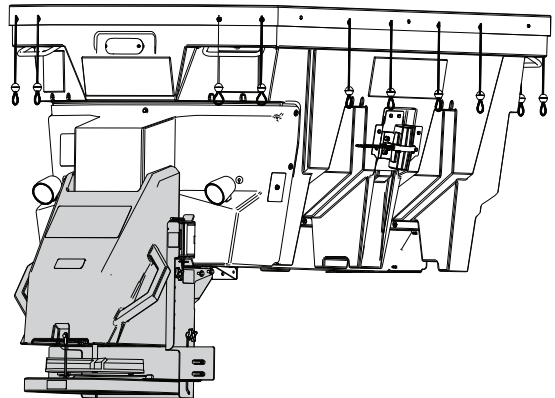


**Figure 9**

g375387

### Removing the Spinner Assembly (Larger VBX Spreaders Only)

Remove the spinner assembly; refer to the *Owner's Manual*.



**Figure 10**

g375386

# Installing the LED Lights on the VBX Spreaders

1. Disconnect and remove the current light(s).

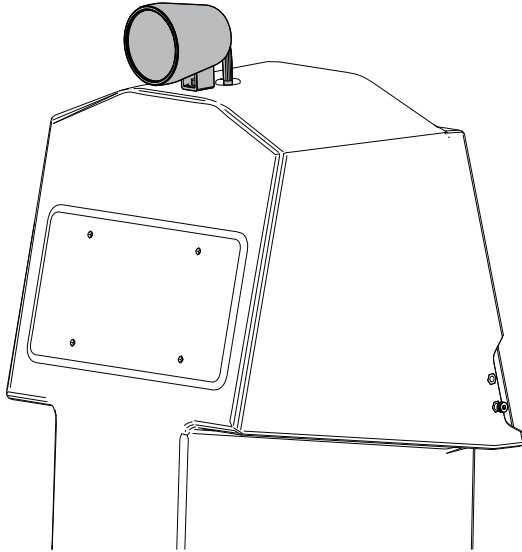


Figure 11

g375388

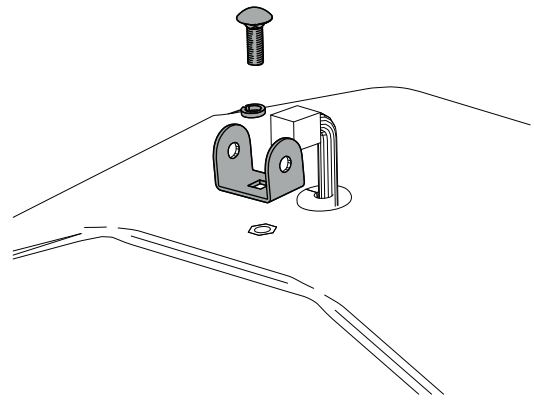


Figure 13

g375383

5. Place the LED light into the bracket and secure it with the bolt, split washer, and nut.

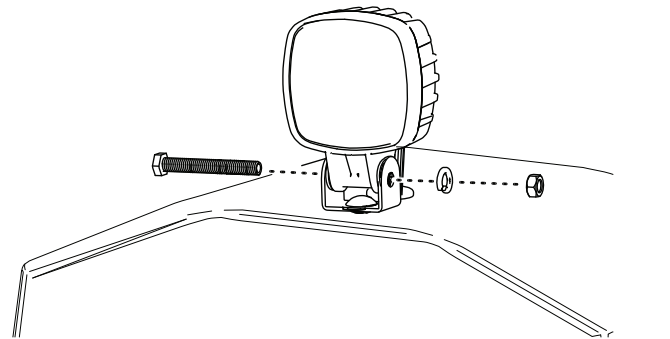


Figure 14

g375384

6. Plug the harness into the LED light assembly.
7. For the large VBX spreaders, attach the previously removed spinner assembly; refer to your spreader *Owner's Manual*.
8. Connect the spreader power/ground cable to the main wire harness.

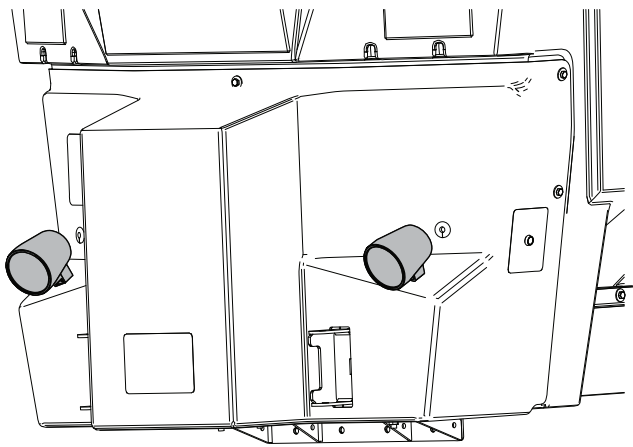


Figure 12

g375385

2. Install the split washer on the bolt.
3. Install the bolt and washer on the bracket.
4. Install the assembly onto the machine.