



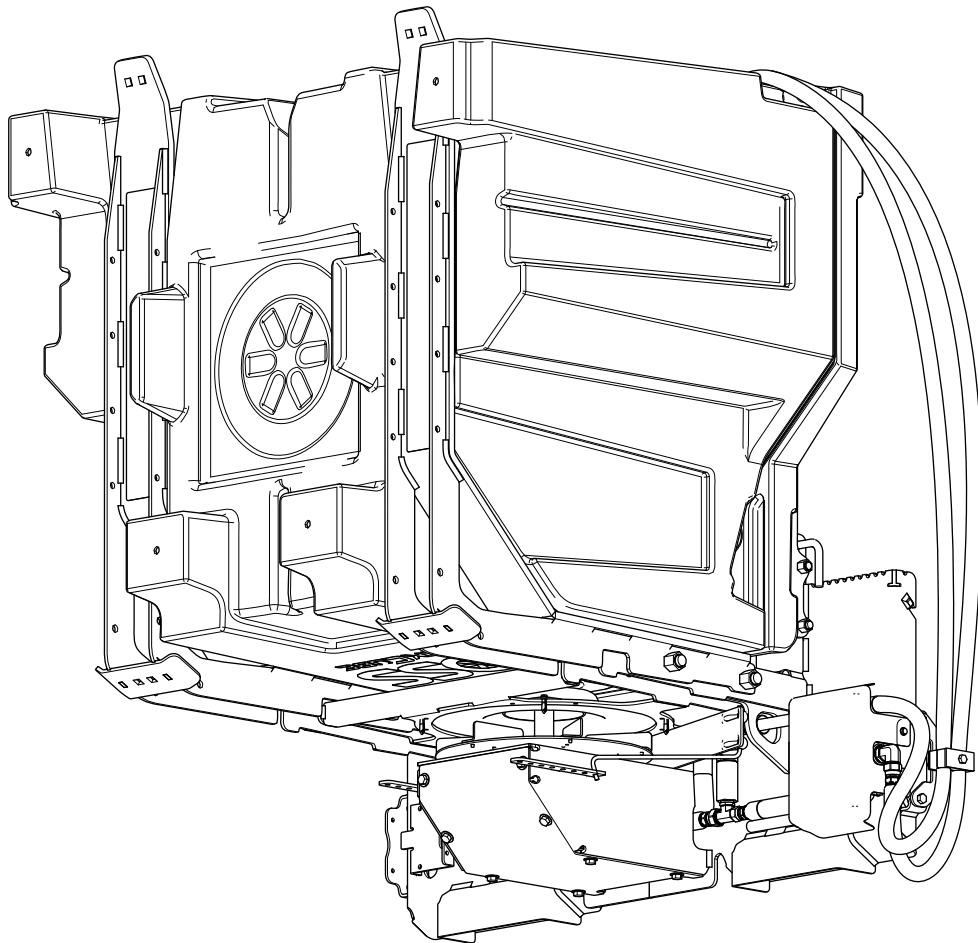
P.O. Box 787
Iron Mountain, MI 49801
United States

Owner's Manual

QuickCube Skid Steer Spreader

Part No. SKS21190—Serial No. 40000000 and Up

Part No. SKS21195—Serial No. 40000000 and Up



This product complies with all relevant European directives; for details, please see the separate product specific Declaration of Conformity (DOC) sheet.

⚠ WARNING

**CALIFORNIA
Proposition 65 Warning**

**This product contains a chemical
or chemicals known to the State of
California to cause cancer, birth defects,
or reproductive harm.**

Patents Pending.

Introduction

Read this information carefully to learn how to operate and maintain your product properly and to avoid injury and product damage. You are responsible for operating the product properly and safely.

You may contact BOSS directly at www.bossplo.com for product and accessory information, help finding a dealer, or to register your product.

Whenever you need service, genuine BOSS parts, or additional information, contact an Authorized BOSS Dealer or BOSS Technical Service (1-800-286-4155) and have the model and serial numbers of your product ready. **Figure 1** identifies the location of the model and serial numbers on the product. Write the numbers in the space provided.

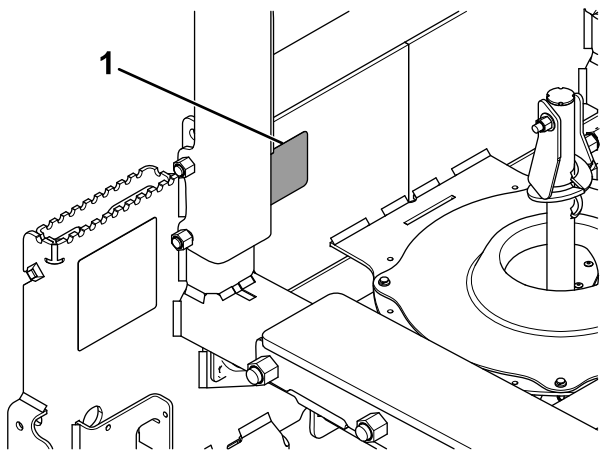


Figure 1

g215727

1. Serial number location

Model No. _____
Serial No. _____

This manual identifies potential hazards and has safety messages identified by the safety-alert symbol (**Figure 2**), which signals a hazard that may cause serious injury or death if you do not follow the recommended precautions.



Figure 2

g000502


1. Safety-alert symbol

This manual uses 2 words to highlight information. **Important** calls attention to special mechanical information and **Note** emphasizes general information worthy of special attention.

Contents

Safety	3
Preparation	3
Operation	3
Safety and Instructional Decals	3
Setup	5
Installing the Frame Forks	5
Installing the Hose Bracket	5
Installing the Hydraulic Hoses	6
Mounting the Spreader Frame	6
Product Overview	8
Controls	8
Specifications	8
Operation	9
Filling the QuickCube	9
Mounting the Spreader Frame	9
Unloading/Loading QuickCubes	9
Mounting the QuickCube	10
Operating the Spreader	11
Adjusting the Material Deflectors	11
Removing the QuickCube	11
Removing the Spreader Frame	12
Operating Tips	12
Storage	13

Safety

Improper use or maintenance by the operator or owner can result in injury. To reduce the potential for injury, comply with these safety instructions and always pay attention to the safety-alert symbol , which means: **Caution, Warning, or Danger**—personal safety instruction. Failure to comply with the instruction may result in personal injury or death.

Preparation

- Read the *Owner's Manual* before operating or servicing the spreader.
- Always follow the skid steer manufacturer's recommendations relating to system installation.
- Ensure that only trained personnel installs and performs maintenance on the equipment.
- Always wear appropriate personal protective equipment when loading, unloading, and servicing the spreader including hand and skin protection. Wear substantial, slip-resistant footwear, cold-weather clothing, hard hat, safety glasses, and respiratory protection.

Operation

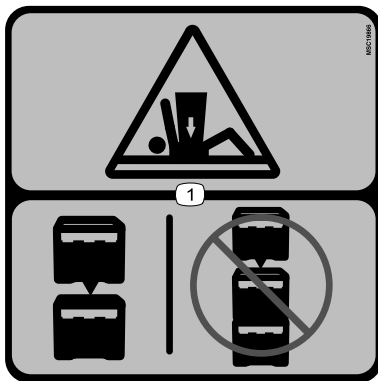
- Use a 500 kg (1/2 ton) minimum lifting device to move heavy spreader components.

- **Never** put any part of your body between the spreader and the vehicle.
- When transporting the spreader, ensure that it is properly secured. Instructions are available at www.bosspow.com.
- Safety data sheets (SDS) are available at www.bosspow.com.
- Do not operate the machine while ill, tired, or under the influence of alcohol or drugs.
- Always follow the manufacturer's recommendations for proper parking procedures.
- Always wear your seatbelt and/or lap bar while operating the vehicle.
- Do not exceed 22.5 km/h (14 mph) while spreading.
- Overloading the spreader could result in an accident or damage. **Never** exceed the rated operating capacity for the vehicle.
- This spreader is restricted to the use of dry, free-flowing salt and deicer. **Do not** run other materials through the spreader.
- Turn the vehicle and spreader off before filling, servicing, or cleaning it.
- **Do not** operate the spreader within 7.6 m (25 ft) of bystanders.
- **Do not** climb into or ride on the spreader.
- Keep your hands, feet, and clothing away from moving parts and mounting points.

Safety and Instructional Decals



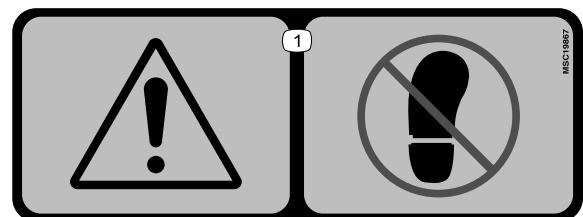
Safety decals and instructions are easily visible to the operator and are located near any area of potential danger. Replace any decal that is damaged or missing.



MSC19866

decalsmc19866

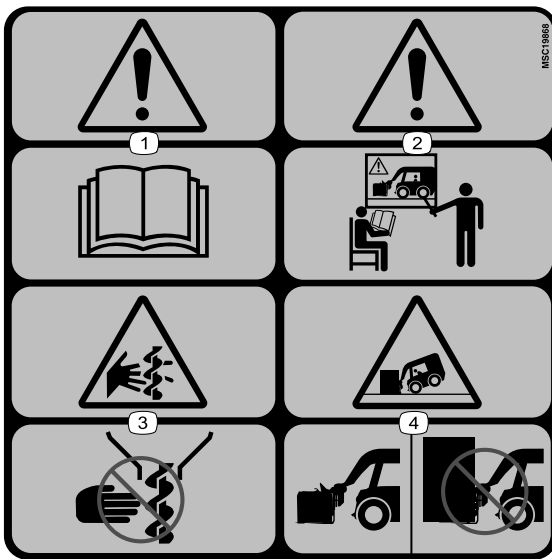
1. Crushing hazard—do not stack cubes more than 2 high.



MSC19867

decalsmc19867

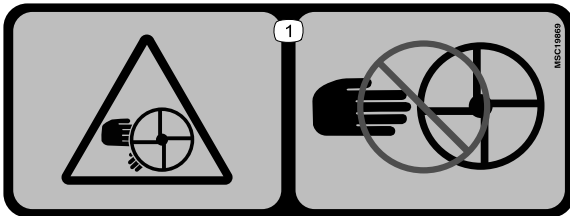
1. Warning—do not step here.



MSC19868

MSC19868

- | | |
|--|---|
| <p>1. Warning—read the <i>Owner's Manual</i>.</p> <p>2. Warning—receive training before operating the machine.</p> | <p>3. Cutting/dismemberment hazard, auger—keep fingers and hands clear of the auger.</p> <p>4. Tipping hazard—do not lift more than 1 cube.</p> |
|--|---|



MSC19869

MSC19869

1. Cutting/dismemberment hazard; spinner—keep your fingers and hands clear of the spinner.

Setup

Determine the left and right sides of the machine from the normal operating position.

Installing the Frame Forks

1. Secure a straight fork and 1 side of the cube stop to 1 of the fork supports using 2 bolts (1/2 inch), 2 washers (1/2 inch), 1 bushing, and 2 nylon locknuts (1/2 inch) as shown in [Figure 3](#).

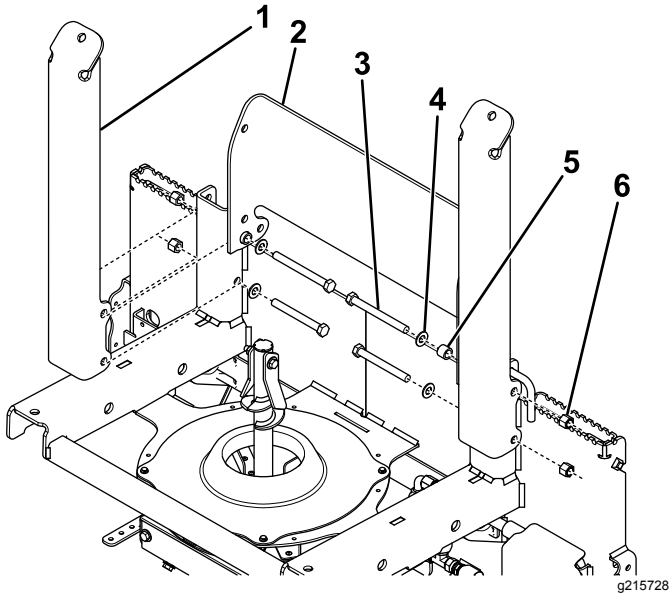


Figure 3

- | | |
|--------------------|-----------------------------|
| 1. Straight fork | 4. Washer (1/2 inch) |
| 2. Cube stop | 5. Bushing |
| 3. Bolt (1/2 inch) | 6. Nylon locknut (1/2 inch) |

2. Repeat step 1 with the other side of the cube stop and remaining straight fork.
3. Torque the bolts to 76 N·m (56 ft-lb).
4. Slide an angled fork onto 1 of the spreader side arms and secure it with 2 bolts (3/4 inch) and 2 nylon locknuts (3/4 inch) as shown in [Figure 4](#).

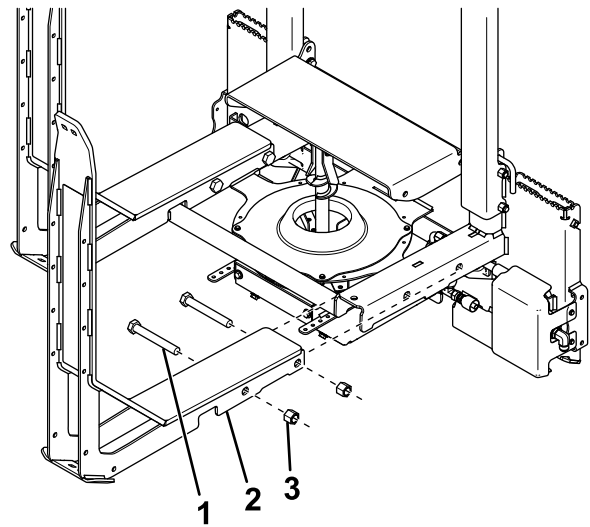


Figure 4

- | | |
|--------------------|------------------|
| 1. Bolt (3/4 inch) | 3. Nylon locknut |
| 2. Angled fork | |

5. Repeat step 4 with the remaining angled fork.
6. Torque the bolts to 272 N·m (201 ft-lb).

Installing the Hose Bracket

1. Secure the hose mount bracket to the left side of the spreader frame using 2 bolts (3/8 inch) and 2 nylon locknuts (3/8 inch) as shown in [Figure 5](#).

Note: Torque the bolt to 45 N·m (33 ft-lb).

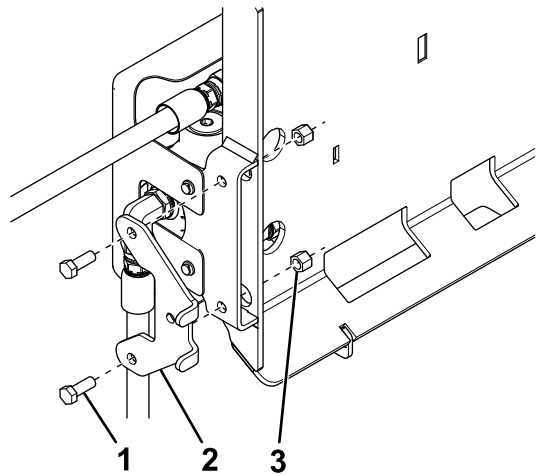


Figure 5

- | | |
|-----------------------|-----------------------------|
| 1. Bolt (3/8 inch) | 3. Nylon locknut (3/8 inch) |
| 2. Hose mount bracket | |

2. Secure the hydraulic hose clamp and clamp plates to the hose mount bracket using a bolt (5/16 inch), washer (5/16 inch), and locknut (5/16 inch) as shown in [Figure 6](#).

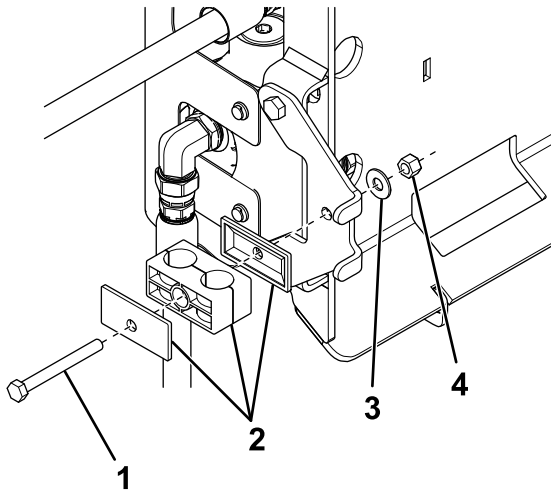


Figure 6

g215718

- | | |
|---------------------|------------------------|
| 1. Bolt (5/16 inch) | 3. Washer (5/16 inch) |
| 2. Hose clamp | 4. Locknut (5/16 inch) |

Installing the Hydraulic Hoses

1. Remove and retain the flow control cover (Figure 7).

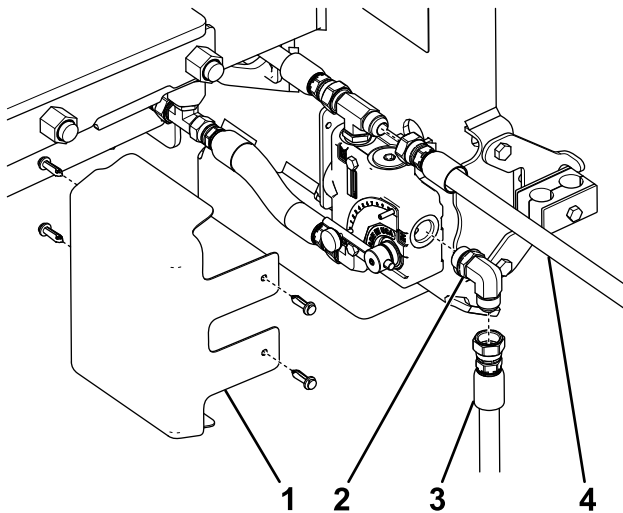


Figure 7

g215717

- | | |
|-----------------------|---------------|
| 1. Flow control cover | 3. Short hose |
| 2. 90° hose fitting | 4. Long hose |

2. Secure the 90° hose fitting to the flow control valve (Figure 7) and torque it to 81 N·m (60 ft-lb).

Note: Ensure that the fitting is oriented so that it points down.

3. Secure the short hose to the 90° hose fitting (Figure 7).
4. Secure the long hose to the remaining fitting on the flow control valve (Figure 7).

5. Loosen the bolt for the hydraulic hose clamp and slide the hoses between the 2 halves (Figure 6).
6. Tighten the hydraulic hose clamp bolt and torque it to 26 N·m (19 ft-lb).
7. Secure the male quick-disconnect fitting to the free end of the long hose (Figure 8).

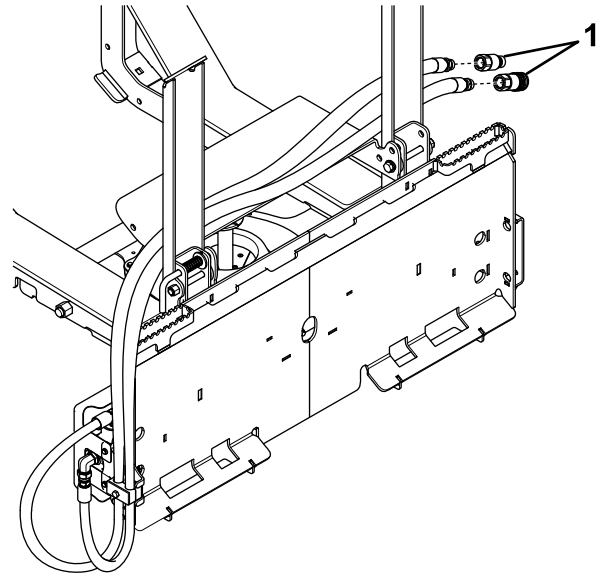


Figure 8

g215725

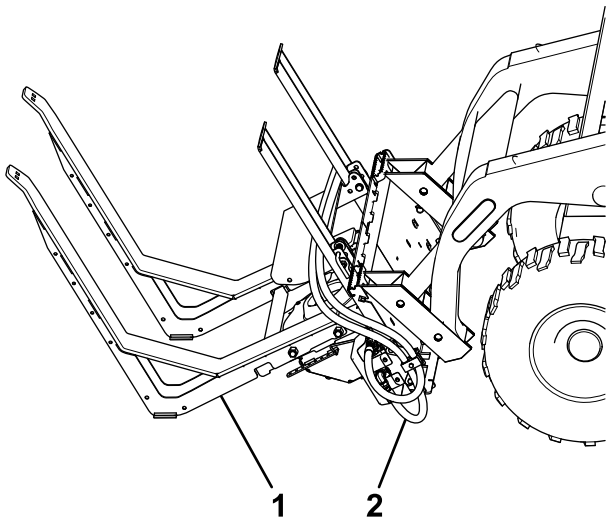
1. Quick disconnect fittings

8. Secure the female quick-disconnect fitting to the free end of the short hose (Figure 8).
9. Starting just behind the hose clamp, wrap both of the hydraulic hoses with the hose wrap.

Mounting the Spreader Frame

1. Drive the skid steer forward into the back of the spreader frame (Figure 9).

Important: Refer to your skid steer *Operator's Manual* for safety and operating procedures.



g215723

Figure 9

1. Frame 2. Hydraulic hoses
-

2. Lift the frame up and lock it on to the skid steer attachment plate.
3. Park the machine on a level surface, shut off the engine, engage the parking brake, and remove the key.

Important: Refer to your skid steer ***Operator's Manual*** for safety and operating procedures.

4. Connect the hydraulic hoses to the attachment ports on the machine ([Figure 9](#)).

Product Overview

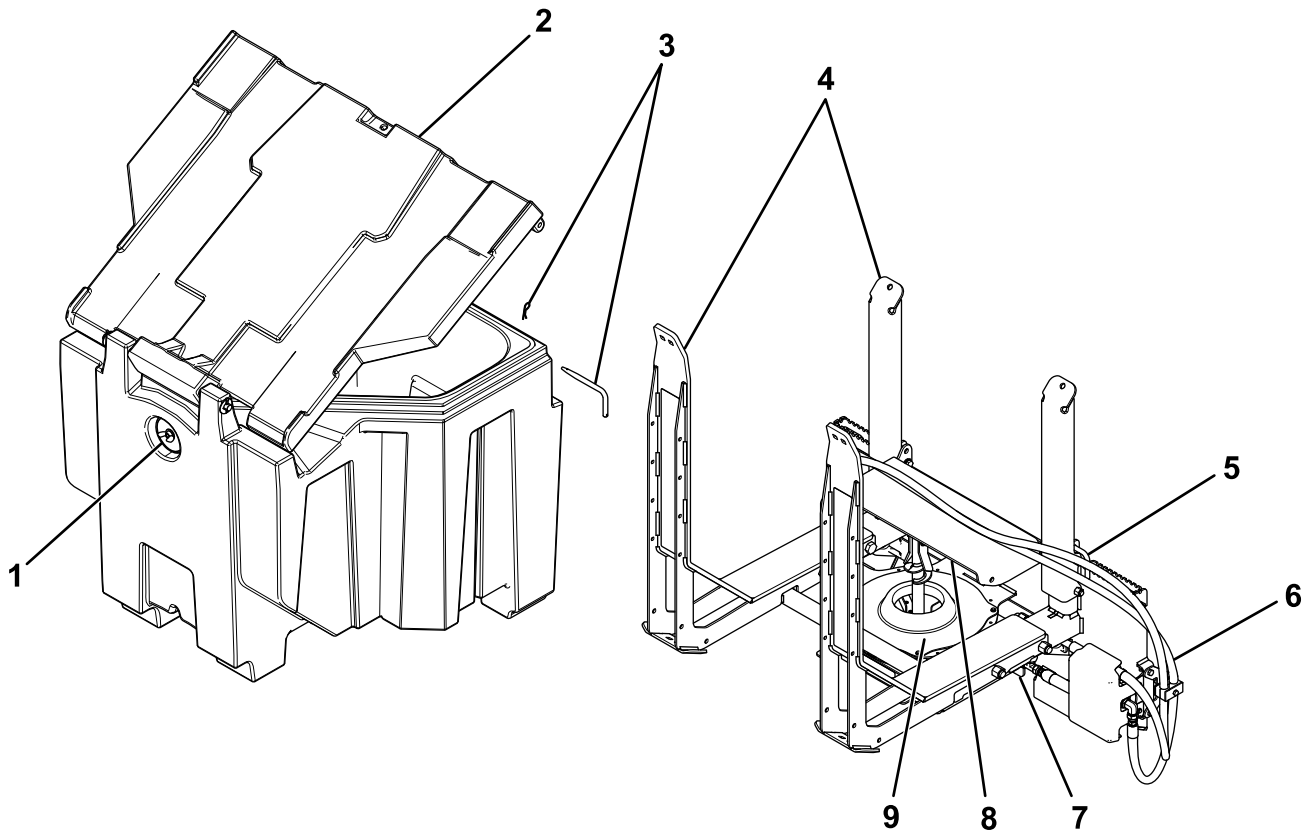


Figure 10

g215724

- | | |
|--------------------------------|-----------------------|
| 1. Cube plug | 6. Hydraulic hoses |
| 2. Lid | 7. Material deflector |
| 3. Latch | 8. Cube stop |
| 4. Frame forks | 9. Spinner |
| 5. Cube stop spring-pin handle | |

Controls

Become familiar with all of the controls before you operate the spreader.

Refer to your skid steer *Operator's Manual* for additional controls.

Material Deflector

The material deflector controls the spread of materials; you can adjust the controls to provide different spread patterns; refer to [Adjusting the Material Deflectors \(page 11\)](#).

Specifications

Note: Specifications and design are subject to change without notice.

Cube capacity	0.4 m ³ (0.5 yd ³)
Cube height	96.5 cm (38 inches)
Cube length	96.5 cm (38 inches)
Cube width	117 cm (46 inches)
Cube weight (empty)	50 kg (110 lb)
Frame weight	190.5 kg (420 lb)

Operation

Note: Determine the left and right sides of the machine from the normal operating position.

Filling the QuickCube

Important: Use only dry salt or deicer in the spreader. Other materials could damage the machine.

Important: When filling the spreader, do not exceed the rated operating capacity for your vehicle.

1. Unlatch the QuickCube lid and swing it open.
2. Ensure that the cube plug is in place.
3. Determine the amount of material that you can safely transport using the rated operating capacity of the vehicle and the following table.

Material Type	Weight Range
Fine salt and deicers	721 to 961 kg/m ³ (1,215 to 1,620 lb/yd ³)
Coarse and bulk salt	1,121 to 1,281 kg/m ³ (1,890 to 2,160 lb/yd ³)

4. Fill the QuickCube evenly with the material, making sure not to fill past the top of the hopper.

Important: Overfilling the hopper could damage the spreader and the vehicle.

5. Close the lid and secure it with the 2 latches.

Mounting the Spreader Frame

1. Ensure that the spreader frame is on a level surface.
2. Drive the skid steer forward into the back of the spreader frame (Figure 11).

Important: Refer to your skid steer *Operator's Manual* for safety and operating procedures.

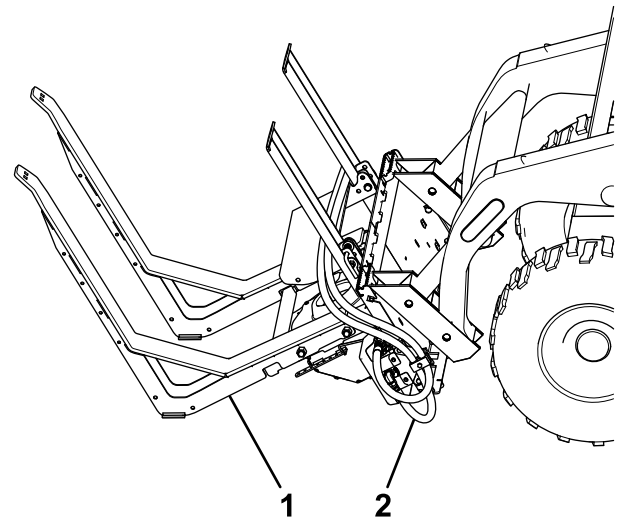


Figure 11

g215723

1. Frame
2. Hydraulic hoses

3. Lift the frame up and lock it on to the skid steer attachment plate.
4. Park the machine on a level surface, shut off the engine, engage the parking brake, and remove the key.

Important: Refer to your skid steer *Operator's Manual* for safety and operating procedures.

5. Connect the hydraulic hoses to the attachment ports on the skid steer (Figure 11).

Unloading/Loading QuickCubes

Important: Do not stack QuickCubes more than 2 high.

Important: Do not lift more than 1 QuickCube at a time.

1. Start the skid steer, and tilt the spreader frame forward until the forks are parallel to the ground (Figure 12).

Important: Refer to your skid steer *Operator's Manual* for safety and operating procedures.

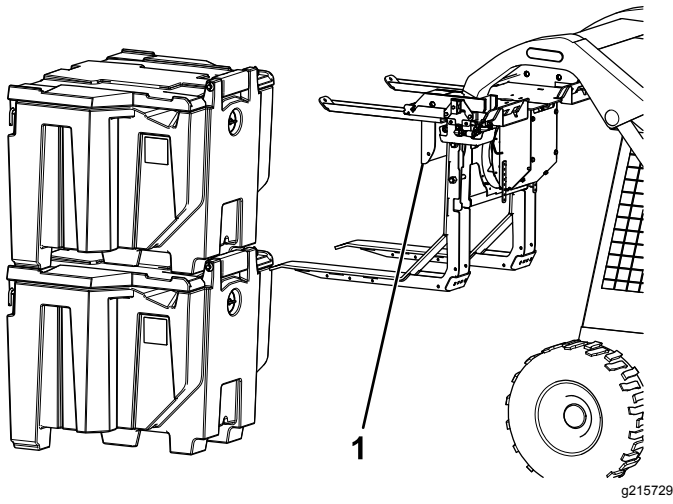


Figure 12

1. Cube stop

2. Drive the machine forward and insert the frame forks into the channels on the cube until the cube is flush against the cube stop (Figure 12).
3. Lift the cube up and slowly move it on or off the trailer before lowering the cube completely.
4. Slowly back away from the cube.
5. Repeat steps 2 through 4 for any additional cubes.

Mounting the QuickCube

1. Loosen the wing nut on the QuickCube plug and remove the plug (Figure 13).

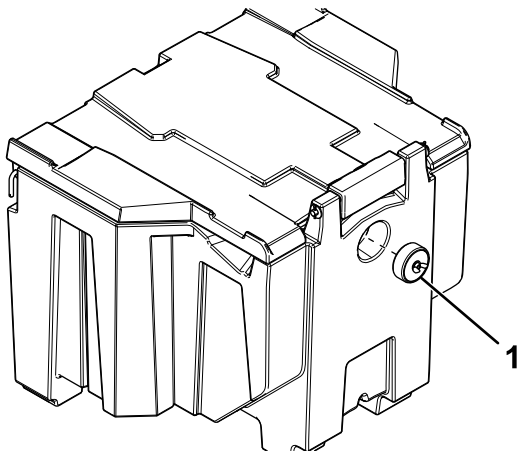


Figure 13

1. Plug

2. On the spreader frame, pull back the spring-pin handle and raise the cube stop (Figure 14).

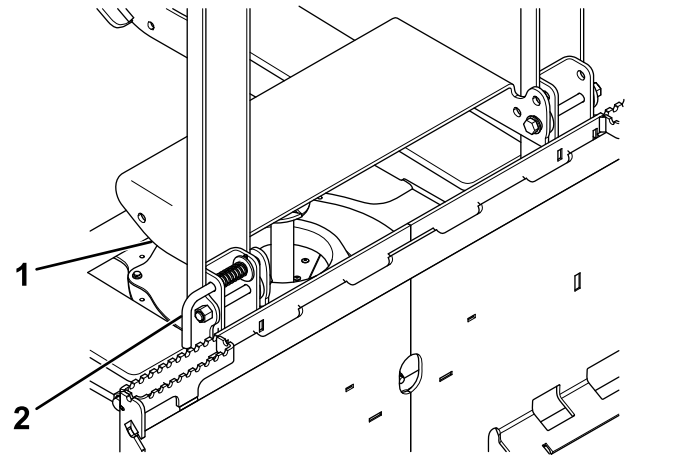


Figure 14

1. Cube stop
2. Spring-pin handle

3. Start the skid steer, and tilt the spreader frame forward until the forks are parallel to the ground (Figure 15).

Important: Refer to your skid steer *Operator's Manual* for safety and operating procedures.

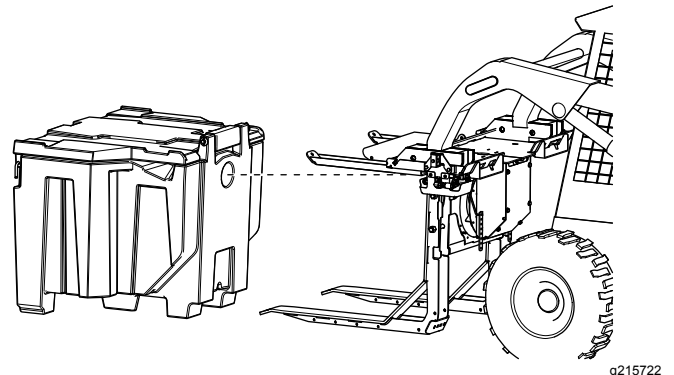


Figure 15

4. Drive the skid steer forward and insert the frame forks into the channels on the cube until the cube is flush against the frame (Figure 15).
5. Tilt the frame until the forks are perpendicular to the ground.

Operating the Spreader

⚠ DANGER

Hands, feet, and clothing can get caught in the moving parts of the spreader and cause serious bodily injury and loss of limbs.

Keep your hands, feet, and clothing away from moving spinner, auger, and attachment points.

⚠ CAUTION

The spreader throws material at a high speed that could cause minor injuries to bystanders.

Bystanders should stay a minimum of 7.6 m (25 ft) away from operating spreaders.

1. Start the skid steer.

Important: Refer to your skid steer *Operator's Manual* for safety and operating procedures.

2. Angle the spreader up or down to adjust the distance materials are thrown.

Note: You can also adjust the angle of the spreader while you spread.

3. Start and operate the spreader according to the auxiliary hydraulic controls section of your skid steer *Operator's Manual*.

Note: Always check for bystanders before starting the spreader.

Adjusting the Material Deflectors

You can adjust the material deflectors by inserting the deflector pins into the staggered holes around the spinner (Figure 16).

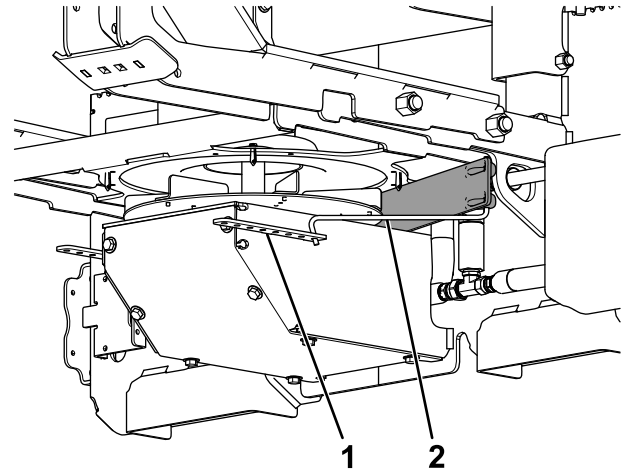


Figure 16

g215721

1. Adjustment holes
2. Material deflector

You can adjust the spread pattern by positioning the deflectors as shown in Figure 17.

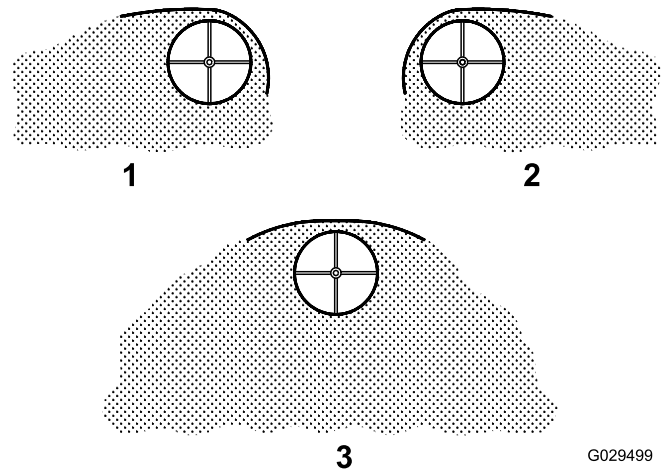


Figure 17

G029499
g029499

Deflection Settings

1. Driver side open
2. Passenger side open
3. Both sides open

Removing the QuickCube

1. Locate a level surface to place the cube.
2. Tilt the spreader frame so that the forks are parallel to the ground (Figure 18).

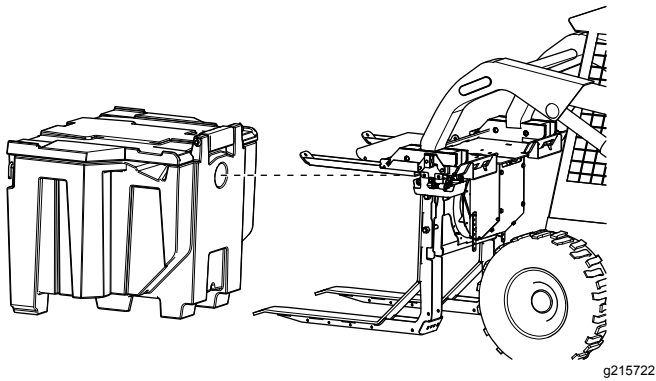


Figure 18

g215722

3. Lower the cube and slowly back up the skid steer (Figure 18).
4. Pull the spring-pin handle and lower the cube stop (Figure 19).

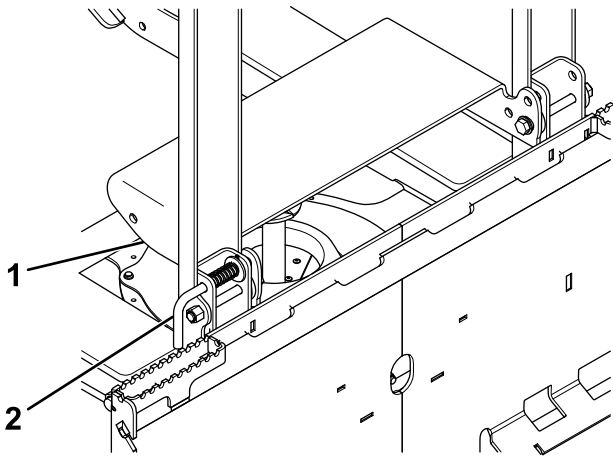


Figure 19

g215716

1. Cube stop
2. Spring-pin handle

5. Install the cube plug in the auger opening (Figure 20).

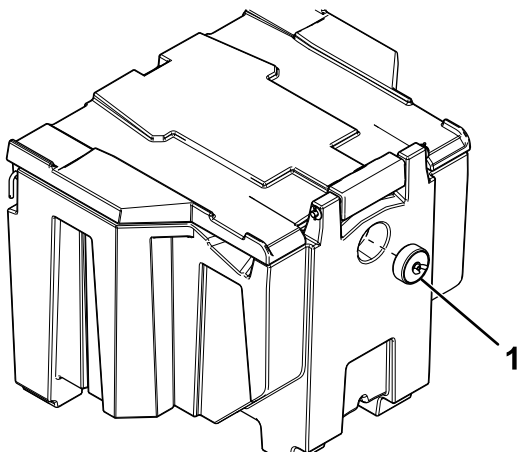


Figure 20

g215726

1. Plug

Removing the Spreader Frame

1. Park the skid steer on a level surface, shut off the engine, engage the parking brake, and remove the key.

Important: Refer to your skid steer *Operator's Manual* for safety and operating procedures.

2. Disconnect the hydraulic hoses from the skid steer and store them on the hose bracket (Figure 21).

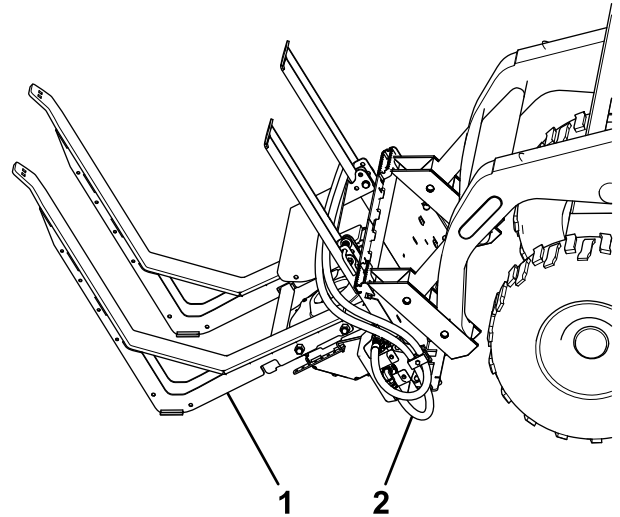


Figure 21

g215723

1. Frame
2. Hydraulic hoses

3. Unlock the spreader frame from the skid steer attachment plate.
4. Lower the attachment plate into the resting position (Figure 21) until it slides free from the spreader frame, and slowly back the skid steer away from the frame.

Operating Tips

- Know the area in which you are working; hidden obstructions such as curbs, sidewalks, and pipes, can damage the spreader or vehicle.
- Do not let the ice build up; always start as soon as possible.
- Always remember to spread at a safe speed. Spreading faster can be hard on your vehicle as its load is greatly increased.
- **Never** ride on or put hands or body parts into the spreader while servicing or operating it.

Storage

1. Unload any remaining material inside the QuickCube.
2. Drive to your storage location and remove the QuickCube; refer to [Removing the QuickCube \(page 11\)](#).
3. Remove the spreader frame; refer to [Removing the Spreader Frame \(page 12\)](#).
4. Wash, rinse, and dry the entire unit.
5. Lightly sand and use touch-up paint on painted areas that are scratched, chipped, or rusted.

Notes:

BOSS Products Commercial Warranty

What this warranty covers:

This warranty covers defects in material and workmanship except as set forth below.

Who is covered:

The original purchaser from an authorized dealer.

For how long:

Complete Product: 2 years from the date of purchase.

Labor: 2 years from the date of purchase for complete product.

Parts: 1 year from the date of purchase. (no Labor)

What BOSS Products will do:

BOSS Products will, at its sole option, repair or replace defective parts at no charge.

What you must do for warranty service:

To obtain warranty service, purchaser must return the defective product to any authorized BOSS Products dealer (preferably the one from whom the product was purchased) within the warranty period. Purchaser must be able to verify the original purchase date. All transportation costs to and from the dealer will be the responsibility of the purchaser. To locate the authorized BOSS dealer nearest to you, call toll free: (800) 286-4155.

What is not covered:

1. Expendable parts such as hoses, plow shoes, cutting edges, pins, nuts, bolts, blade guides, etc.
2. Products repaired or altered by anyone other than an authorized BOSS Products dealer.
3. Products which have been subject to misuse, negligence, accident, improper installation, maintenance, care, or storage.
4. Products mounted on vehicles other than those listed in the *BOSS Snowplow Application Chart and Selection Guide*.
5. BOSS Products does not assume liability for damage to your motor vehicle resulting from the attachment or use of any BOSS products. Vehicle risk is the sole responsibility of the purchaser.

Limits of BOSS Products Liability are:

BOSS Products' liability is expressly limited to repair or replacement of defective parts. BOSS Products shall not be liable for consequential, incidental, or contingent damages whatsoever, even if damages are caused by the negligence or fault of BOSS Products. The foregoing warranties are exclusive and in lieu of all other express and implied warranties including, but not limited to, the implied warranties of merchantability and fitness for a particular purpose.

This warranty does not apply if you purchased your product for personal, family, or household use. In this case, refer to the BOSS Products Limited Consumer Warranty.

BOSS Products is a division of
The Toro® Company
P.O.Box 787 2010 The BOSS Way
Iron Mountain, MI 49801

(2017-2018)

BOSS Products Consumer Warranty

What this warranty covers:

This warranty covers defects in material and workmanship except as set forth below.

Who is covered:

The original retail purchaser of a BOSS product who purchases it for personal, family, or household use.

For how long:

Complete Product: 2 years from the date of purchase.

Labor: 2 years from the date of purchase for complete product.

Parts: 1 year from the date of purchase. (no Labor)

What BOSS Products will do:

BOSS Products will, at its sole option, repair or replace defective parts at no charge.

What you must do for warranty service:

To obtain warranty service, purchaser must return the defective product to any authorized BOSS Products dealer (preferably the one from whom the product was purchased) within the warranty period. Purchaser must be able to verify the original purchase date. All transportation costs to and from the dealer will be the responsibility of the purchaser. To locate the authorized BOSS dealer nearest to you, call toll free: (800) 286-4155.

What is not covered:

1. Expendable parts such as hoses, plow shoes, cutting edges, pins, nuts, bolts, blade guides, etc.
2. Products repaired or altered by anyone other than an authorized BOSS Products dealer.
3. Products which have been subject to misuse, negligence, accident, improper installation, maintenance, care, or storage.
4. Products mounted on vehicles other than those listed in the *BOSS Snowplow Application Chart and Selection Guide*.
5. BOSS Products does not assume liability for damage to your motor vehicle resulting from the attachment or use of any BOSS products. Vehicle risk is the sole responsibility of the purchaser.

Limits of BOSS Products Liability are:

BOSS Products' liability is expressly limited to repair or replacement of defective parts. BOSS Products shall not be liable for consequential, incidental, or contingent damages whatsoever, even if damages are caused by the negligence or fault of BOSS Products. The foregoing warranties are exclusive and in lieu of all other express and implied warranties including, but not limited to, the implied warranties of merchantability and fitness for a particular purpose.

State laws:

Some states do not allow exclusion of incidental or consequential damages or the limitations on how long an implied warranty lasts, so these limitations or exclusions may not apply to you. This warranty gives you specific legal rights and you may also have the other rights which vary from state to state.

This warranty does not apply if you purchased your product for personal, family, or household use. In this case, refer to the BOSS Products Limited Consumer Warranty.

BOSS Products is a division of
The Toro® Company
P.O.Box 787 2010 The BOSS Way
Iron Mountain, MI 49801

(2017-2018)