



Drag Pro Undercarriage for 2010 and After Dodge Ram Truck

Part No. RPL21660—Serial No. 40000000 and Up

Form No. MSC21677 Rev B

Installation Instructions

BOSS Products limited consumer warranty and BOSS Products commercial warranty policies are located at www.BOSSPlow.com.

Patents pending.

Safety

- Always follow the vehicle manufacturer's recommendations relating to system installation. For recommended vehicle models, refer to the *BOSS Snowplow Application Chart and Selection Guide*.
- Never disable, remove, or relocate any sensors or other components related to the operation of the air bags.
- To comply with federal regulations and to assure a safe vehicle, do not exceed the front gross-axle-weight rating (FGAWR), rear gross-axle-weight rating (RGAWR), and the gross-vehicle-weight rating (GVWR) at any time.
- Due to the variety of equipment that you can install on the vehicle and undercarriage, do not exceed the front gross-axle-weight rating (FGAWR), rear gross-axle-weight rating (RGAWR), and the gross-vehicle-weight rating (GVWR) at any time. This may require weighing the vehicle and adding ballast as necessary. It may also limit the payload capacity of the vehicle.

Installation

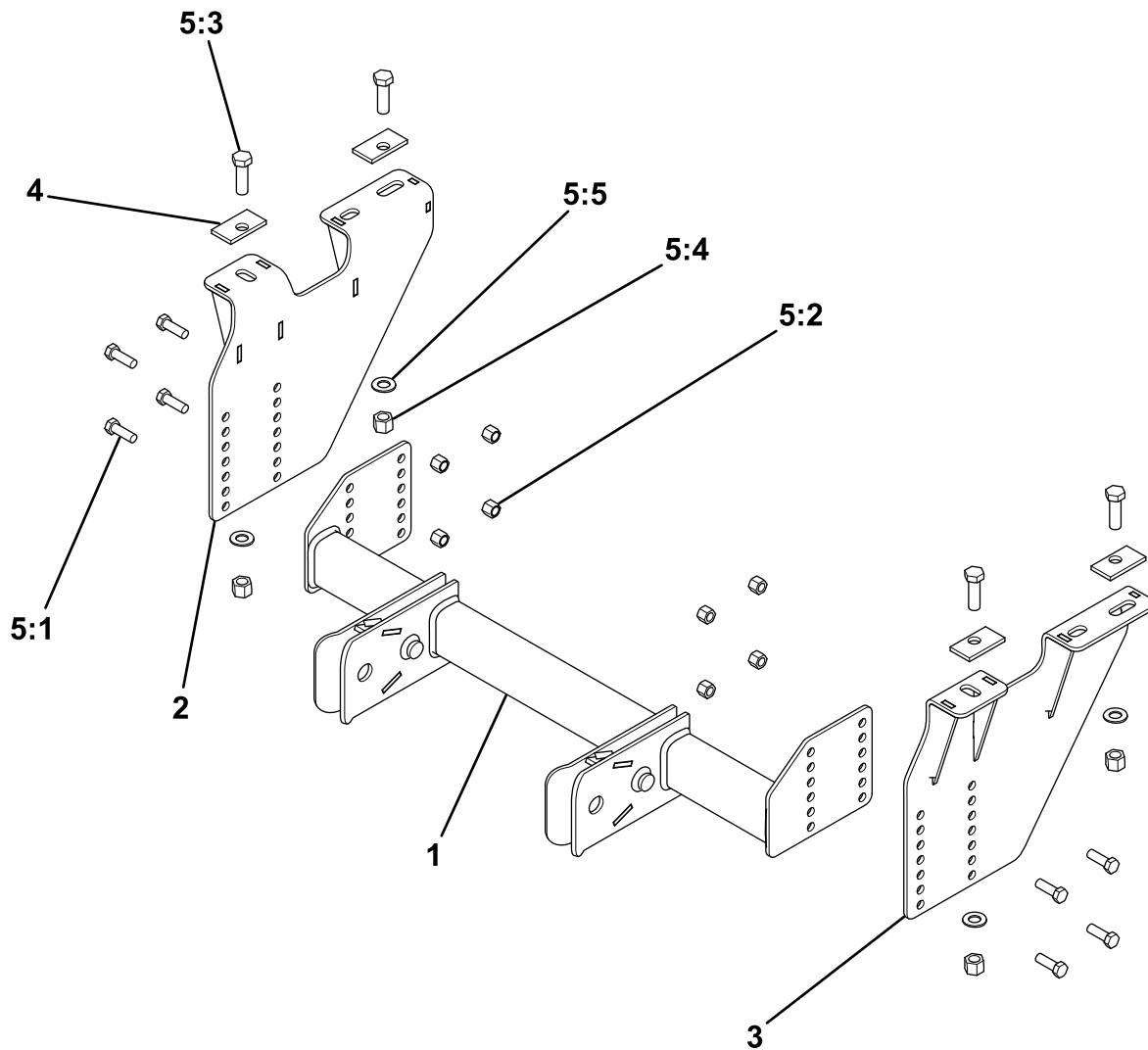
Determine the left and right sides of the machine from the normal operating position.

1. Park the machine on a level surface, shut off the engine, wait for all moving parts to stop, engage the parking brake, and remove the key.
2. On the underside of the rear of the vehicle, loosely attach the undercarriage sideplates to the existing holes in the frame using 4 bolts (5/8 inch), shim plates, washers, and locknuts as shown below.
3. Loosely attach the pushbeam to the sideplates using 8 bolts (1/2 inch) and locknuts as shown below.

Note: Refer to your plow *Owner's Manual* for the appropriate pushbeam height.

4. Torque all the fasteners to the following specifications:
 - 5/8-inch bolts to 153 N·m (113 ft-lb)
 - 1/2-inch bolts to 76 N·m (56 ft-lb)





Parts

g261940

Ref.	Part Number	Qty.	Description	Ref.	Part Number	Qty.	Description
1	RPL21667-03	1	WLDMNT, PUSHBEAM, UC, DODGE, BACKBLADE	5:3	HDW01731	4	HHCS, 5/8-11 X 2, GR5, YZN
2	RPL21665-03	1	WLDMNT, SIDEPLATE, DODGE, UC, DS, BACKBLADE	5:4	HDW01777	4	NUT, 5/8-11, FIN, FULL, YZN
3	RPL21666-03	1	WLDMNT, SIDEPLATE, DODGE, UC, PS, BACKBLADE	5:5	HDW03891	4	WASHER-LOCK, SPLIT, 5/8 YZN
4	TGS05919	4	SHIM, 1/4 PLT, 11/16 HOLE, TGS				
5	HDW21669	1	KIT-HARDWARE, UC, DODGE, DRAG PRO				
5:1	HDW01728	8	HHCS, 1/2-13 X 1-1/2, NC, GR5, YZN				
5:2	HDW01748	8	NUT, 1/2-13, NYL INS, YZN				