

Installation Instructions

BOSS Products limited consumer warranty and BOSS Products commercial warranty policies are located at www.BOSSPlow.com.

Patents pending.

1. Remove the spinner assembly; refer to your spreader *Owner's Manual*.
2. Remove the rear cover from the hopper ([Figure 1](#) and [Figure 2](#)).

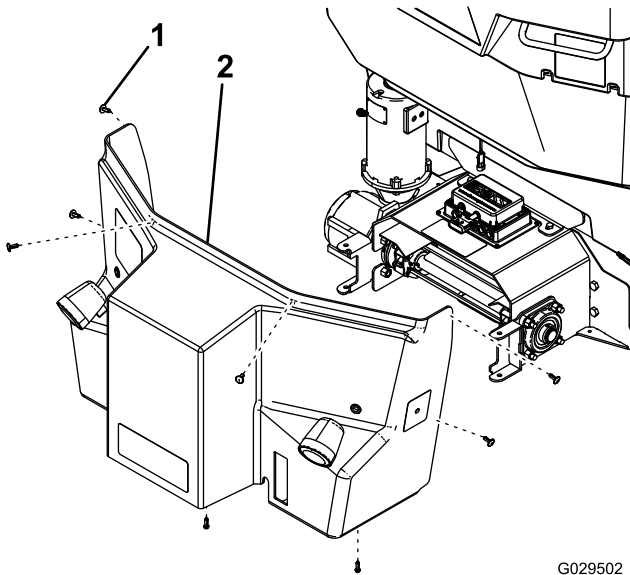


Figure 1
VBX Spreaders

1. Clip
2. Rear cover

G029502
g029502

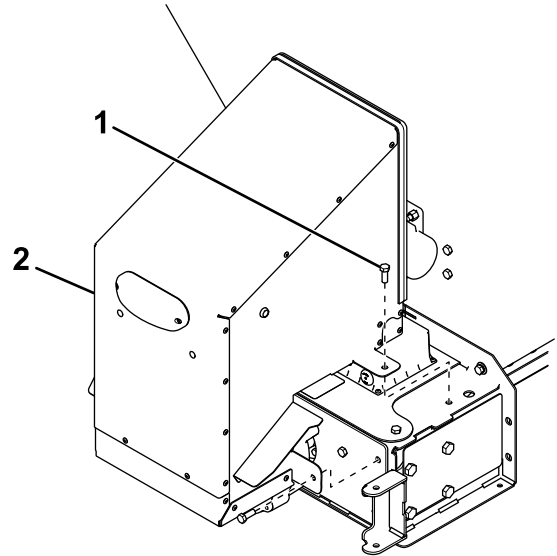


Figure 2
Forge Spreaders

g223387

1. Bolt
2. Rear cover

3. Mark and drill a hole (1 inch) centered on the rear cover using the measurements in [Figure 3](#) and [Figure 4](#).

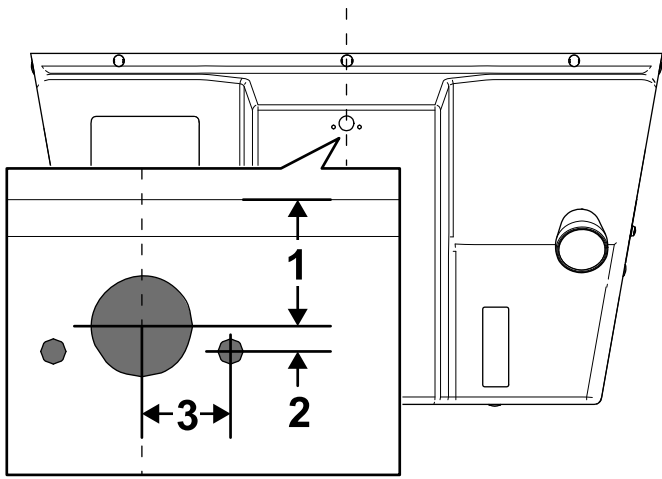


Figure 3
VBX Spreaders

g296377

1. 3.1 cm (1-1/4 inches)
2. 0.6 cm (1/4 inches)
3. 2.2 cm (7/8 inch)

5. Secure the light to the rear cover using 2 nuts (Figure 5).

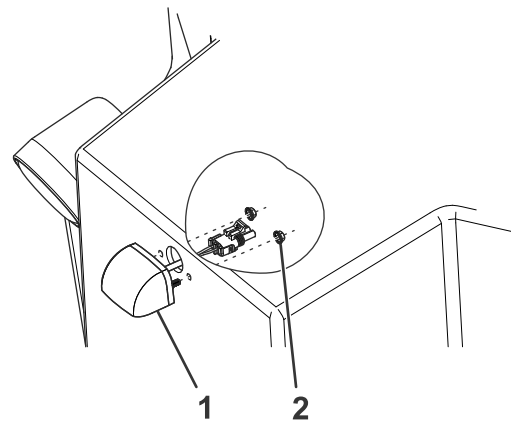


Figure 5

g296379

1. Light
2. Nut

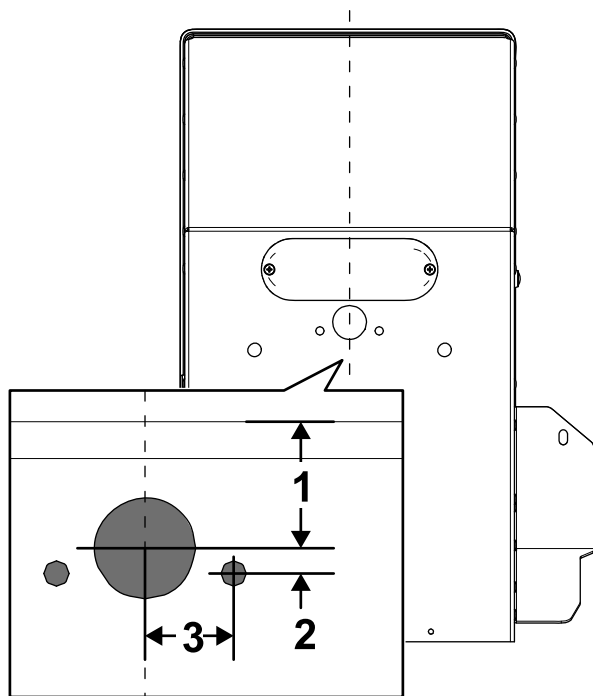


Figure 4
Forge Spreaders

g296378

1. 8.9 cm (3-1/2 inches)
2. 0.6 cm (1/4 inches)
3. 2.2 cm (7/8 inch)

4. Mark and drill 2 holes (1/4 inch) in the rear cover using the measurements in Figure 3 and Figure 4.

6. Torque the fasteners to 6 N·m (4.5 ft-lb).
7. For Forge spreaders, continue to step 9. For VBX spreaders, remove the fasteners securing the rear light to the hopper (Figure 6).

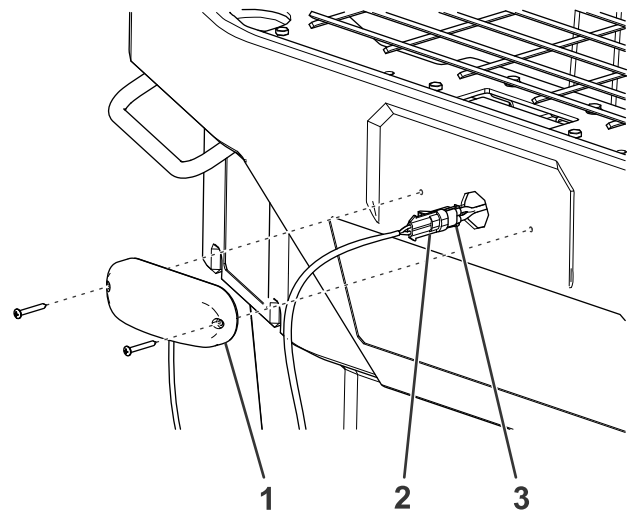
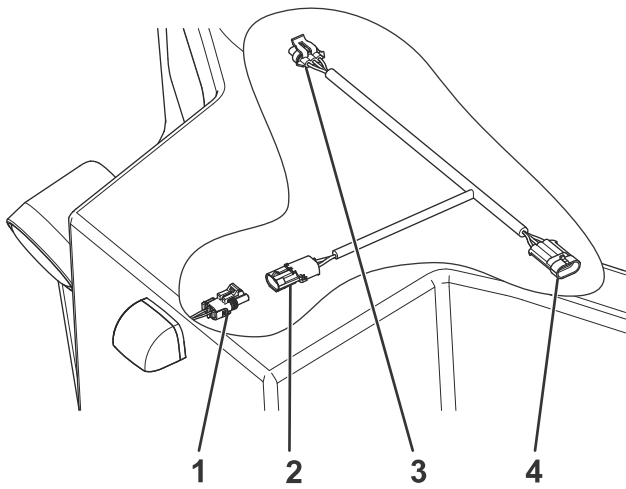


Figure 6

g296998

1. Rear light
2. Rear light connector
3. Spreader-side wire harness

8. Pull the wire harness up through the hopper until you reach the connector for the spreader-side wire harness (Figure 6).
9. Disconnect the rear light connector from the spreader-side wire harness (Figure 6).
10. Connect the spreader-side wire harness to the spreader-side wire harness connector on the light-kit wire harness (Figure 6 and Figure 7).



g296999

Figure 7

- | | |
|--------------------|---|
| 1. Light | 3. CHMSL connector |
| 2. Light connector | 4. Spreader-side wire harness connector |

-
11. Disconnect the wire harness from the rear light (Figure 6).
 12. Connect the CHMSL connector on the light-kit wire harness to the rear light (Figure 6 and Figure 7).
 13. For Forge spreaders, continue to step 14. For VBX spreaders, pull the wire harnesses down through the hopper and install the previously removed rear light (Figure 6).
 14. Connect the light-kit wire harness to the light kit light (Figure 5).
 15. Secure the rear cover to the spreader hopper.
 16. Attach the previously removed spinner assembly.

BOSS
S N O W P L O W