

BOSS Products limited consumer warranty and BOSS Products commercial warranty policies are located at [www.BOSSPlow.com](http://www.BOSSPlow.com).

Patents pending.

## Safety

- Always follow the vehicle manufacturer's recommendations relating to system installation. For recommended vehicle models, refer to the *BOSS Snowplow Application Chart and Selection Guide*.
- Never disable, remove, or relocate any sensors or other components related to the operation of the air bags.
- To comply with federal regulations and to assure a safe vehicle, do not exceed the front gross-axle-weight rating (FGAWR), rear gross-axle-weight rating (RGAWR), and the gross-vehicle-weight rating (GVWR) at any time.
- Due to the variety of equipment that you can install on the vehicle and undercarriage, do not exceed the front gross-axle-weight rating (FGAWR), rear gross-axle-weight rating (RGAWR), and the gross-vehicle-weight rating (GVWR) at any time. This may require weighing the vehicle and adding ballast as necessary. It may also limit the payload capacity of the vehicle.
- Do not exceed the vehicle manufacturer's recommended towing capacity.

## Installation

Determine the left and right sides of the machine from the normal operating position.

1. Park the machine on a level surface, shut off the engine, wait for all moving parts to stop, engage the parking brake, and remove the key.
2. On the underside of the rear of the vehicle, remove the heat shield (Figure 1).

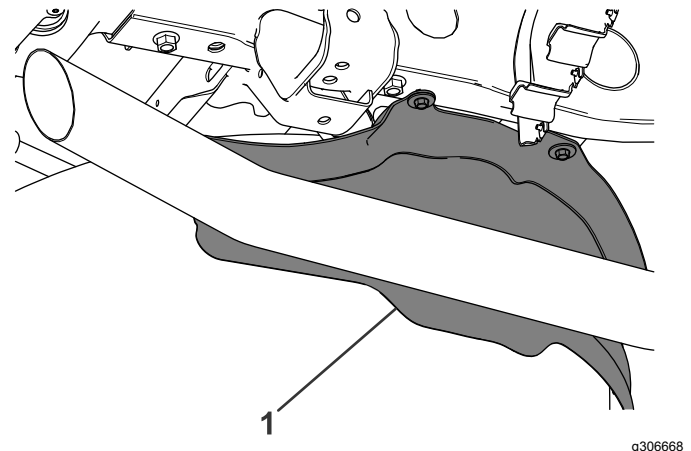


Figure 1

1. Heat shield

3. Remove and retain the existing fasteners shown in Figure 2.

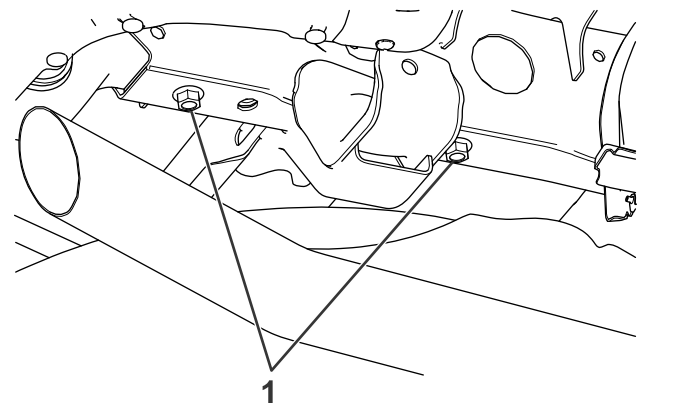
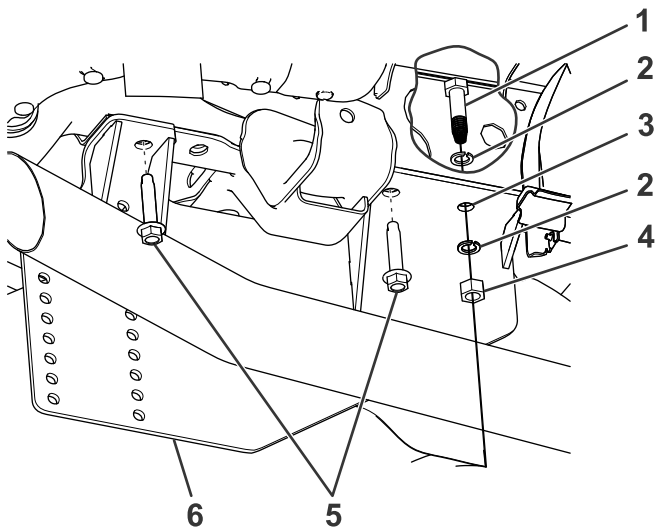


Figure 2

1. Existing fasteners

- Using the sideplate as a guide, mark and drill a hole (5/8 inch) in the vehicle frame ([Figure 3](#)).

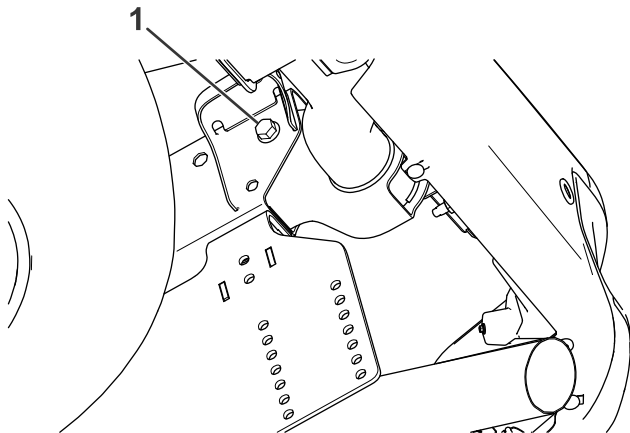


**Figure 3**

g305800

- |                     |                       |
|---------------------|-----------------------|
| 1. Bolt (5/8 inch)  | 4. Nut (5/8 inch)     |
| 2. Split lockwasher | 5. Existing fasteners |
| 3. Drill here.      | 6. Sideplate          |

- Loosely secure the sideplate to the vehicle frame using the previously removed fasteners, a bolt (5/8 inch), 2 split lockwashers, and a nut (5/8 inch) as shown in [figure Figure 3](#).
- On the inner side of the vehicle frame, remove and retain the existing fasteners shown in [Figure 4](#).

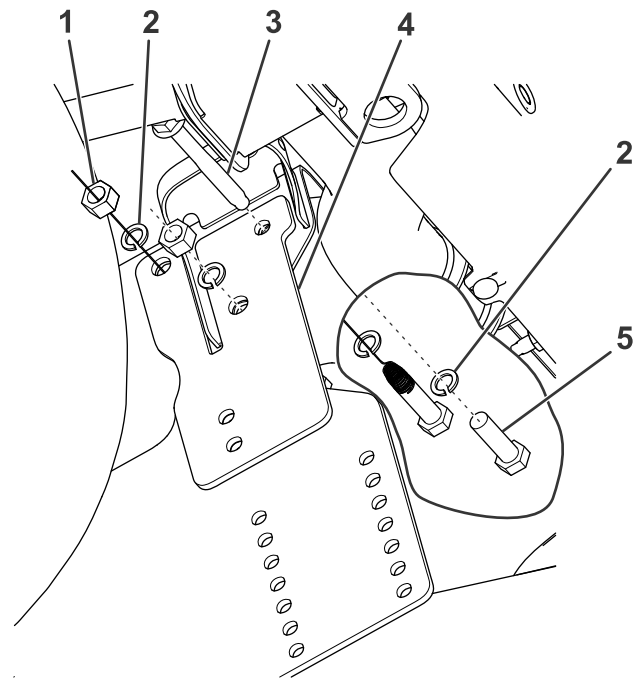


**Figure 4**

g305801

- Existing fastener

- Loosely secure the sidestraps to the vehicle frame using the previously removed fasteners, 2 bolts (5/8 inch), 4 split lockwashers, and 2 nuts (5/8 inch) as shown in [Figure 5](#).

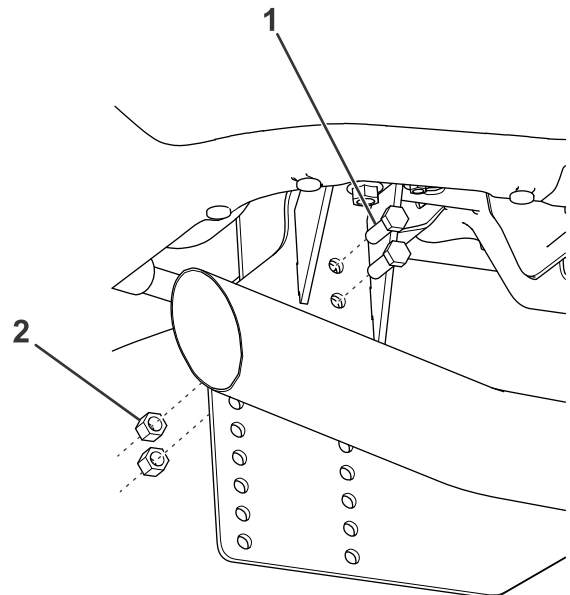


**Figure 5**

g305802

- |                      |                    |
|----------------------|--------------------|
| 1. Nut (5/8 inch)    | 4. Sidestraps      |
| 2. Split lockwashers | 5. Bolt (5/8 inch) |
| 3. Existing fastener |                    |

- Loosely secure the sideplate to the sideplate using 2 bolts (1/2 inch) and nuts ([Figure 6](#)).



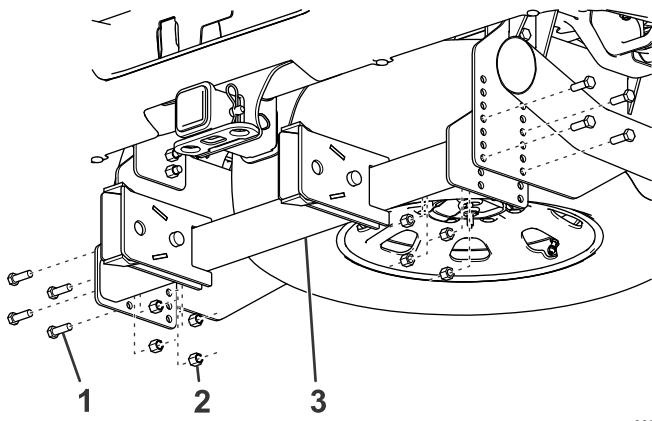
**Figure 6**

g305803

- |                    |                   |
|--------------------|-------------------|
| 1. Bolt (1/2 inch) | 2. Nut (1/2 inch) |
|--------------------|-------------------|

- Loosely attach the pushbeam to the sideplates using 8 bolts (1/2 inch) and locknuts ([Figure 7](#)).

**Note:** Refer to your plow *Owner's Manual* for the appropriate pushbeam height.



g305804

**Figure 7**

1. Bolt (1/2 inch)
2. Nut (1/2 inch)
3. Pushbeam

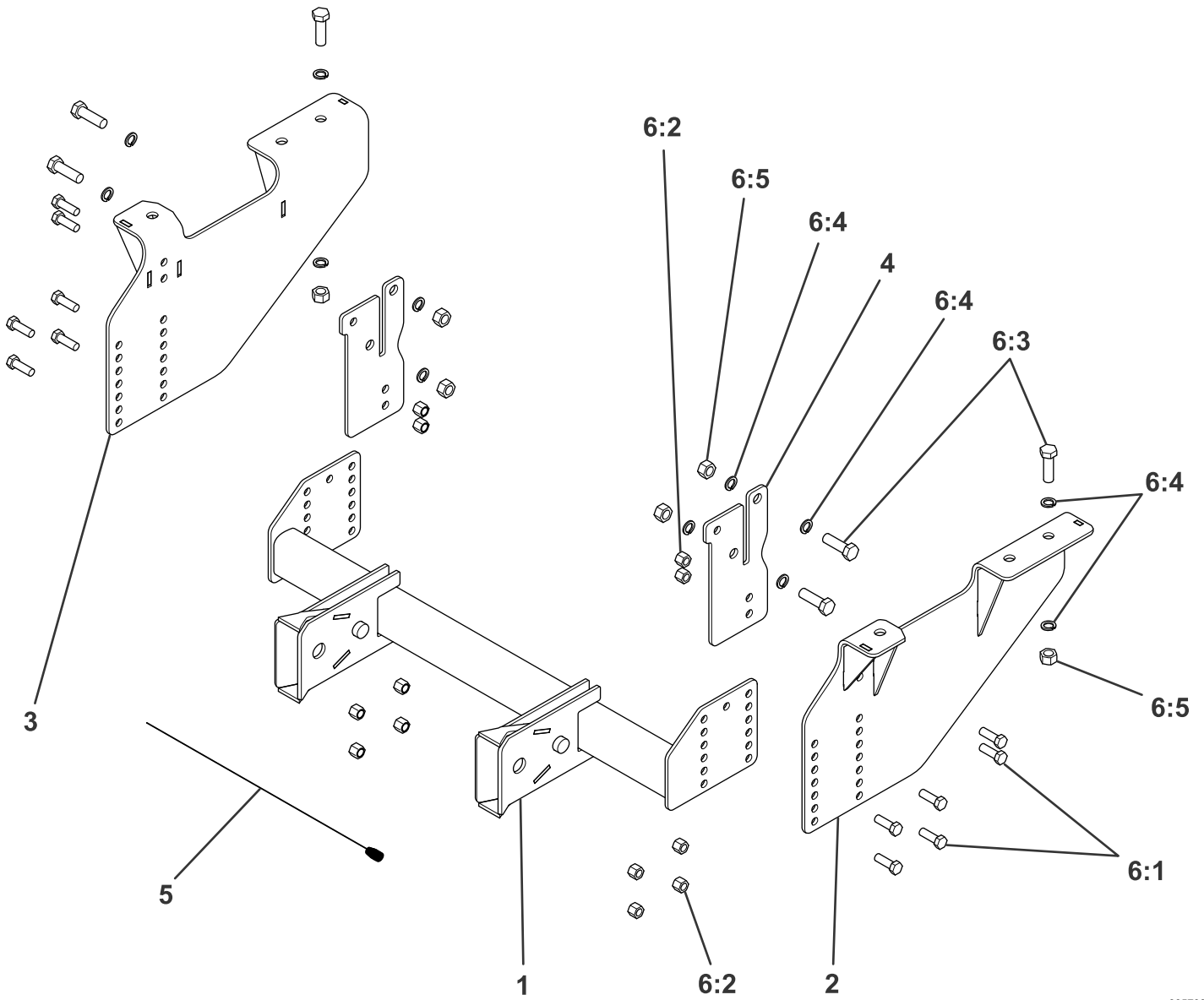
---

10. Install the previously removed heat shield (Figure 1).

**Note:** You may need to modify the heat shield to fit.

11. Torque all the fasteners to the following specifications:

- 5/8-inch bolts to 153 N·m (113 ft-lb)
- 1/2-inch bolts to 76 N·m (56 ft-lb)
- Refer to your vehicle manufacturer for existing fastener torque specifications.



**Parts**

g305798

Ref.	Part Number	Qty.	Description	Ref.	Part Number	Qty.	Description
1	RPL22955-03	1	WLDMNT, PUSHBEAM, UC, GM 20+, DRAG PRO	6:1	HDW01728	12	HHCS, 1/2-13 X 1-1/2, NC, GR5, YZN
2	RPL22951-03	1	WLDMNT, SIDEPLATE, GM 2020, PS, UC, DRAG PRO	6:2	HDW01748	12	NUT, 1/2-13, NYL INS, YZN
3	RPL22954-03	1	WLDMNT, SIDEPLATE, GM 2020, DS, UC, DRAG PRO	6:3	HDW01731	6	HHCS, 5/8-11 X 2, GR5, YZN
4	RPL22957-03	2	SIDE STRAP, GM 20+, DRAG PRO	6:4	HDW03891	12	WASHER-LOCK, SPLIT, 5/8, YZN
5	MSC09738	1	BOLT PULLER, 5/8-11	6:5	HDW01777	6	NUT, 5/8-11, FIN, FULL, YZN
6	HDW22967	1	KIT-HARDWARE, UC, GM 2020, DRAG PRO				