

## Safety

Installing this kit will change the weight of your vehicle. Ensure that your vehicle does not exceed the front gross-axle-weight rating (FGAWR), at any time. You may need to weigh the vehicle and add ballast or limit the payload of the vehicle to compensate.

## Installation

### **⚠ DANGER**

**Vehicle engines contain moving parts and can become extremely hot, capable of causing severe burns and serious bodily harm.**

**Shut off the engine and allow it sufficient time to cool down before installing this kit.**

### **⚠ DANGER**

**Vehicle batteries can cause dangerous electrical shocks that could lead to severe burns or death.**

**Disconnect your battery before installing this kit.**

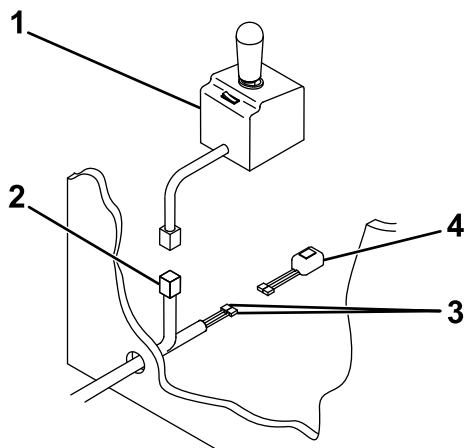
**Note:** Apply dielectric grease to all electrical connections.

Determine the left and right sides of the machine from the normal operating position.

1. Locate the vehicle upfitter connector inside the passenger side fender; refer to your vehicle *Owner's Manual*.
2. Disconnect the 16 pin black Molex MX150 connector and connect the upfitter kit harness; refer to [Schematics \(page 4\)](#).
3. Ensure that the vehicle firewall is clear of obstructions.
4. Pull the plow controller connector, the black wire, and the black/red wire into the vehicle cab through the existing hole (with grommet) on the in the firewall ([Figure 1](#)).

**Important:** Ensure that all wiring is secured in a position that avoids hot or moving parts to prevent damage to the vehicle or plow.

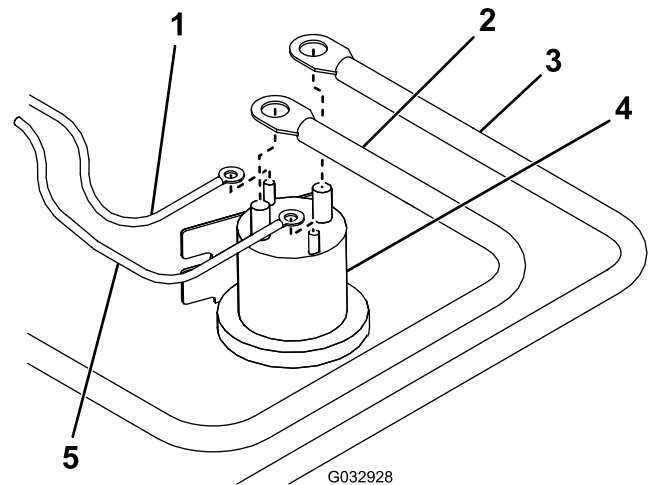




**Figure 1**

g315048

- |                         |                              |
|-------------------------|------------------------------|
| 1. Plow controller      | 3. Black and black/red wires |
| 2. Controller connector | 4. Headlight toggle switch   |



**Figure 2**

G032928

g032928

- |                           |                  |
|---------------------------|------------------|
| 1. White/black wire       | 4. Pump solenoid |
| 2. Battery cable          | 5. Brown wire    |
| 3. Red power/ground cable |                  |

5. Connect the black and black/red wires to the headlight toggle switch (Figure 1).
6. Determine where you will mount the headlight toggle switch and clean the area thoroughly.
 

**Note:** Allow the area to dry completely after cleaning.
7. Remove the adhesive backing and press the toggle switch to the clean area of the dashboard for 30 seconds.
8. Plug the controller connector into the plow controller.
9. Mount the plow controller.

**Note:** Mount the controller in the cab in a dry area where it does not interfere with vehicle operation or visibility.

**⚠ DANGER**

**The controller could cause serious injury if contacted during a crash.**

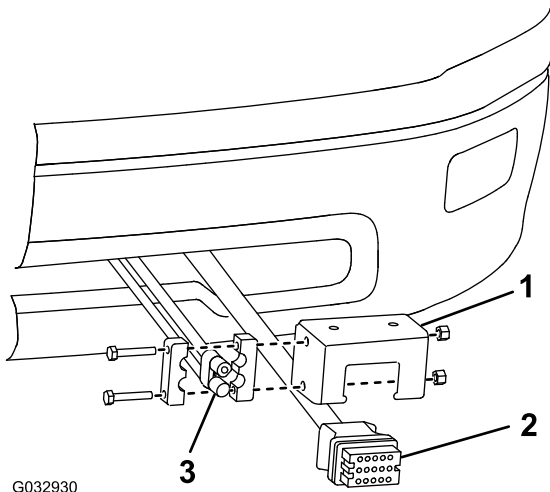
**Mount the controller in a location that vehicle occupants will not contact during a crash.**

10. Connect the white/black wire from the wire harness to the small post on the pump solenoid (Figure 2).

11. Connect the brown wire from the wire harness to the other small post on the pump solenoid (Figure 2).
 

**Note:** The wires may go on either small post, but should not share a post.
12. Mount the pump solenoid inside the engine compartment of the vehicle, ensuring that it stays in an upright position and does not contact the body, hood, or other conductive material on the vehicle.
13. Connect the red power/ground cable to the large post on the pump solenoid (Figure 2).
14. Connect the battery cable to the other large post on the pump solenoid (Figure 2).
 

**Note:** The wires may go on either large post, but should not share a post.
15. Connect the black power/ground cable to the chassis ground terminal on the vehicle.
16. Connect the brown wire to the chassis ground terminal on the vehicle.
17. Connect the free end of the battery cable to the positive (+) battery terminal.
18. Mount the truck-side, wire harness plow connector to the lower part of the bumper using the control-harness mounting bracket (Figure 3).



G032930

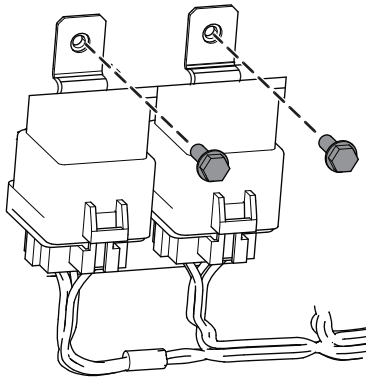
g032930

**Figure 3**

1. Control-harness mounting
2. Plow connector
3. Power/ground connector bracket

19. Mount the black and red power/ground connector to the control-harness mounting bracket (Figure 3).
20. Mount the relay pack to the inside of the engine compartment using 4 sheet-metal screws (Figure 4).

**Note:** Ensure that the relay pack is mounted in the upright position.



g316646

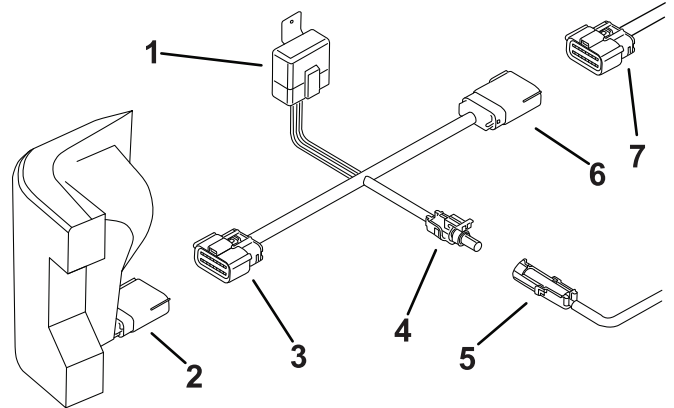
**Figure 4**

21. For vehicles with LED headlights, install the adapter wire harness; refer to [Installing the Adapter Wire Harness \(page 3\)](#).
22. Secure the wire harness with cable ties.

# Installing the Adapter Wire Harness

## For Vehicles with LED Headlights

1. Remove the fender liner.
2. Disconnect the passenger side head light connector.
3. Connect the male light adapter 16-way plug into the vehicle wire harness.



g318181

**Figure 5**

1. Relay
2. Male head light connector
3. Female light adapter plug
4. Female light adapter single way plug
5. Male single way plug on the plow wire harness
6. Male light adapter plug
7. Female vehicle wire harness plug

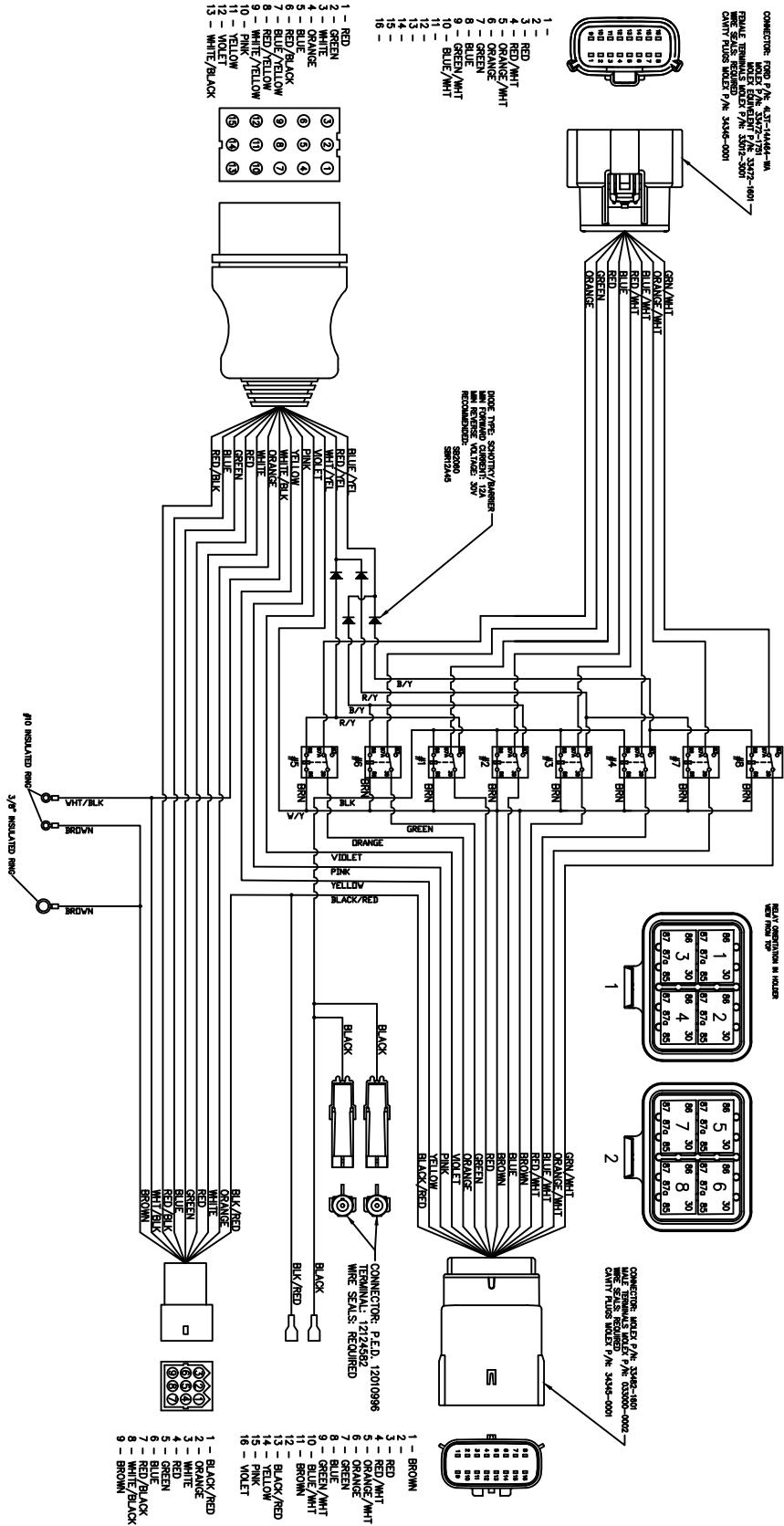
4. Connect the female light adapter 16-way plug into the head light connector.
5. Connect the female light adapter single way plug into the plow main harness male single way plug.
6. Mount the relay pack in a suitable location away from moving or hot vehicle components.
7. Replace the fender liner.
8. Repeat on the drivers side of the vehicle.

# Schematics

- NOTES: 1. ALL WIRE 16 GA WIRE SXL OR GXL  
 2. WIRE LENGTH & TUBING TOLERANCE +/- 1/2".  
 3. BOSS ENGINEERING APPROVAL IS  
 REQUIRED FOR ALL EQUIVALENT PARTS.  
 4. TAPE TUBING ON WIRE, ALL ENDS  
 5. WIRE WIRING ARE DESIGNATED WITH TWO COLORS  
 SEPARATED BY SLASH, THE FIRST COLOR  
 INDICATES THE PRIMARY COLOR, THE SECOND  
 INDICATES THE TRACKER COLOR.

BOSS PRODUCTS STANDARD TOLERANCES  
 SUPERCEDE ALL TORQ TOLERANCES

FRACTIONAL	DECIMAL
0"-48" ± 1/16"	.0050"
DYER 48" ± 1/8"	.0015"
	.0005"
CENTER TO CENTER	BURNED PARTS
0"-3" ± 1/32"	0"-12" ± 1/16"
DYER 3" ± 1/16"	DYER 12" ± 1/8"
DIA METERS	WELDING
± 1/32"	SIZE ± 1/16"-0"
ANGLES	LENGTH ± 1/4"-0"
± 1/2°	SPACING ± 1/4"



(Rev. 0)