

BOSS Products limited consumer warranty and BOSS Products commercial warranty policies are located at [www.BOSSPlow.com](http://www.BOSSPlow.com).

Patent [www.ttcopats.com](http://www.ttcopats.com).

## Installation

### ⚠ WARNING

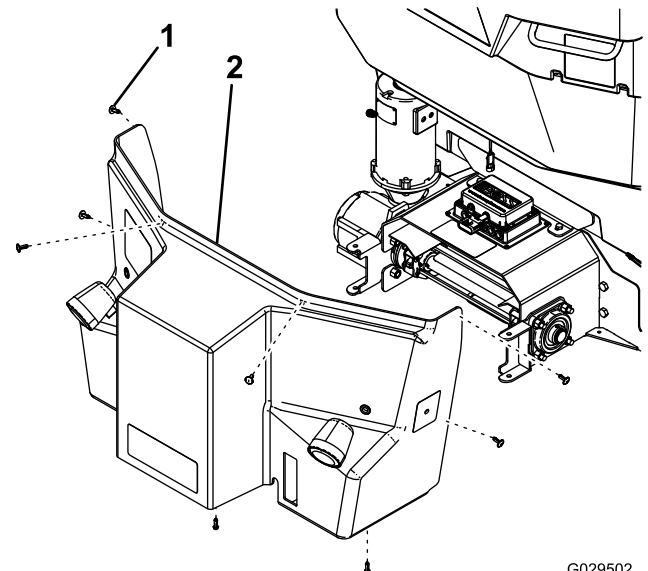
Using a drill without proper eye protection may allow debris to enter the eye, causing injury.

When drilling, always wear eye protection.

## Preparing the Machine

### Forge and VBX Models Only

1. Park your vehicle on a level surface, engage the parking brake, shut off the engine, and remove the keys.
2. Disconnect the spreader power/ground cable from the wire harness.
3. Remove the spinner assembly; refer to your spreader *Owner's Manual*.
4. Remove the rear cover from the hopper.

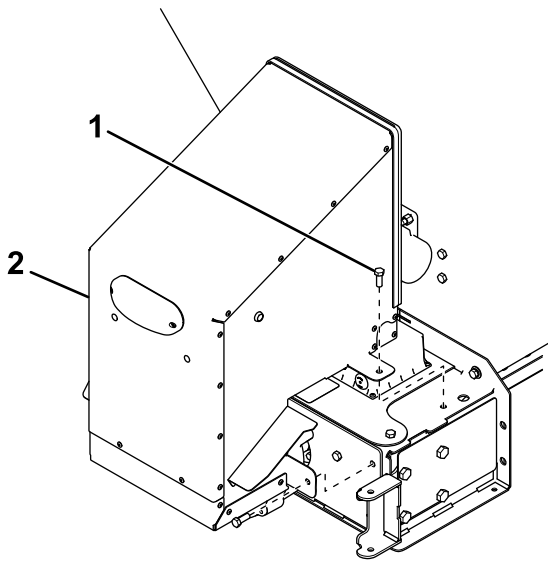


G029502  
g029502

**Figure 1**  
VBX Spreaders

1. Clip

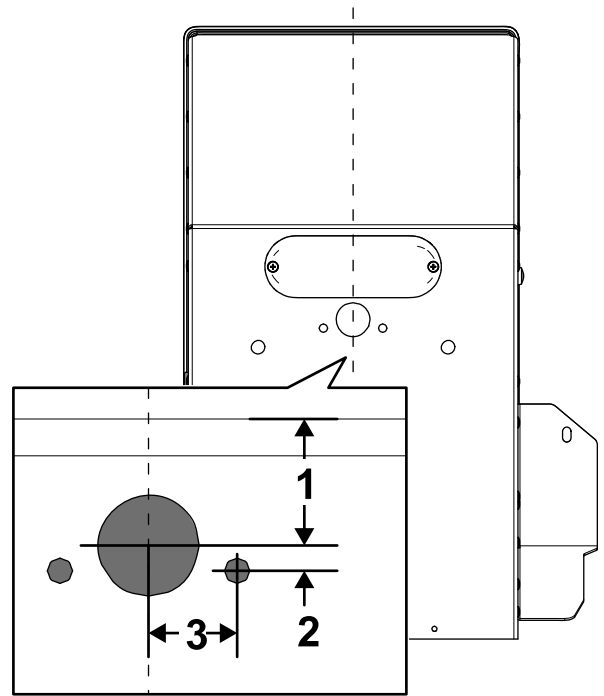
2. Rear cover



**Figure 2**  
Forge Spreaders

1. Bolt                      2. Rear cover

g223387

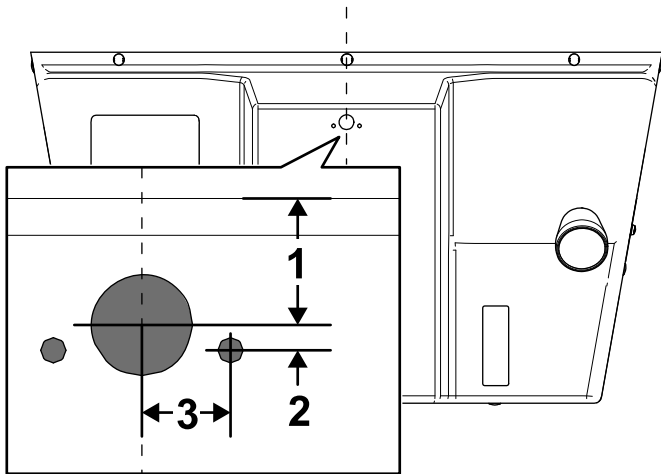


**Figure 4**  
Forge Spreaders

1. 8.9 cm (3-1/2 inches)      3. 2.2 cm (7/8 inch)  
2. 0.6 cm (1/4 inches)

g296378

5. Mark and drill a hole (1 inch) centered on the rear cover using the measurements in the following graphics.



**Figure 3**  
VBX Spreaders

1. 3.1 cm (1-1/4 inches)      3. 2.2 cm (7/8 inch)  
2. 0.6 cm (1/4 inches)

g296377

6. Mark and drill 2 holes (1/4 inch) in the rear cover using the measurements in [Figure 3](#) or [Figure 4](#).

## Preparing the Machine

### VBX+ Models Only

1. Park your vehicle on a level surface, engage the parking brake, shut off the engine, and remove the keys.
2. Disconnect the spreader power/ground cable from the wire harness.
3. Remove the spinner assembly; refer to your spreader *Owner's Manual*.

- Release the 2 top-cover latches and lower the cover towards the ground.

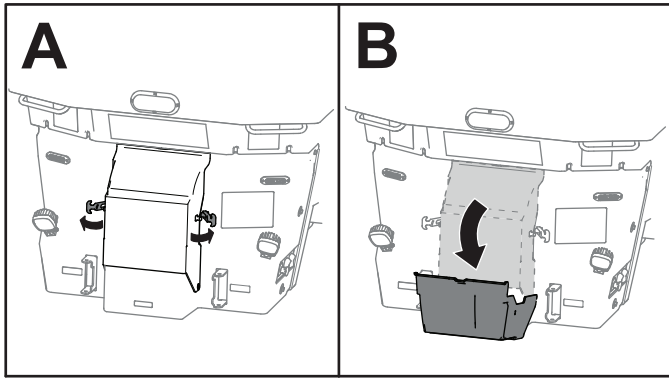


Figure 5

g531199

- Mark and drill a hole (1 inch) centered on the rear cover using the measurements in the following graphic.

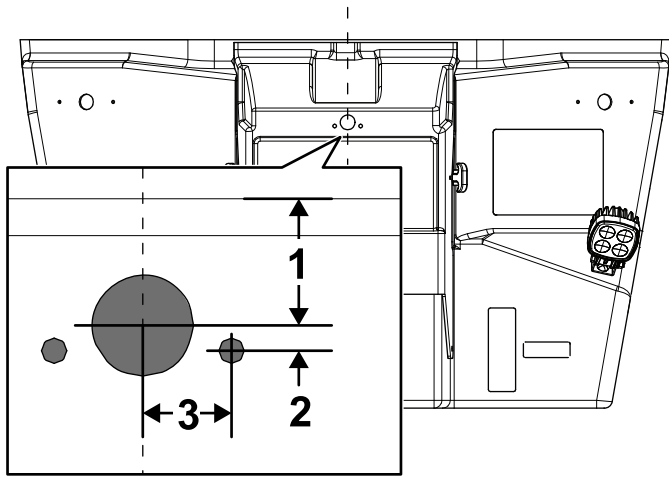


Figure 6

VBX+ Spreaders

g531065

- 3.1 cm (1-1/4 inches)
- 0.6 cm (1/4 inches)
- 2.2 cm (7/8 inch)

- Mark and drill 2 holes (1/4 inch) in the rear cover using the measurements in [Figure 6](#).

## Installing the Kit

### VBX and Forge Models Only

- Secure the light to the rear cover using 2 nuts.

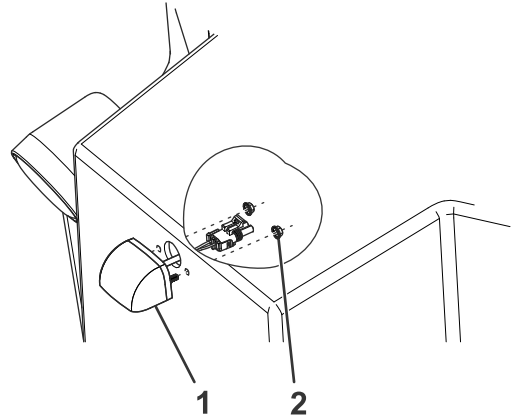


Figure 7

g296379

- Light
- Nut

- Torque the fasteners to 6 N·m (4.5 ft-lb).
- VBX spreaders only:** Remove the fasteners securing the rear light to the hopper.

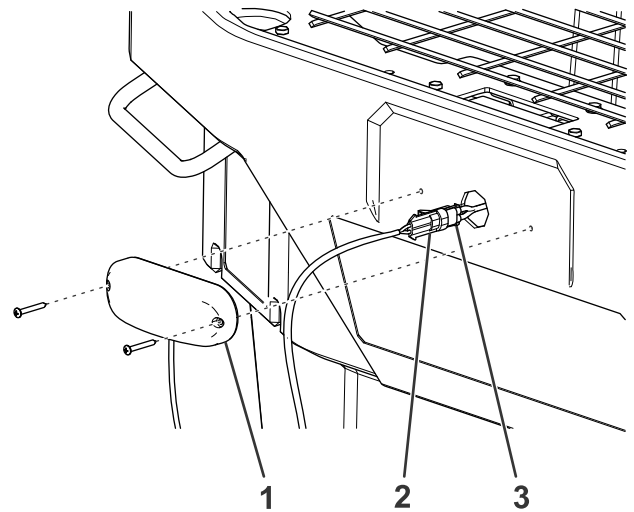


Figure 8

g296998

- Rear light
- Rear light connector
- Spreader-side wire harness

- VBX spreaders only:** Pull the wire harness up through the hopper until you reach the connector for the spreader-side wire harness ([Figure 8](#)).
- Disconnect the rear light connector from the spreader-side wire harness ([Figure 8](#)).
- Connect the spreader-side wire harness to the spreader-side wire harness connector on the light-kit wire harness ([Figure 8](#) and [Figure 9](#)).

# Installing the Kit

## VBX+ Models Only

**Note:** Do not install the wire harness included in this kit.

1. Secure the light to the rear cover using 2 nuts.

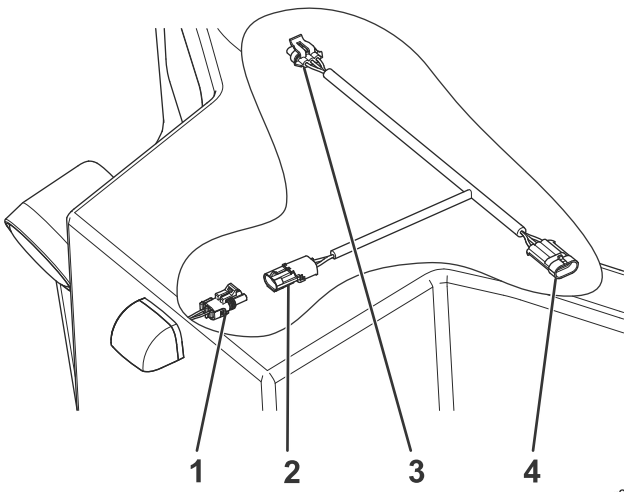


Figure 9

g296999

1. Light
2. Light connector
3. CHMSL connector
4. Spreader-side wire harness connector

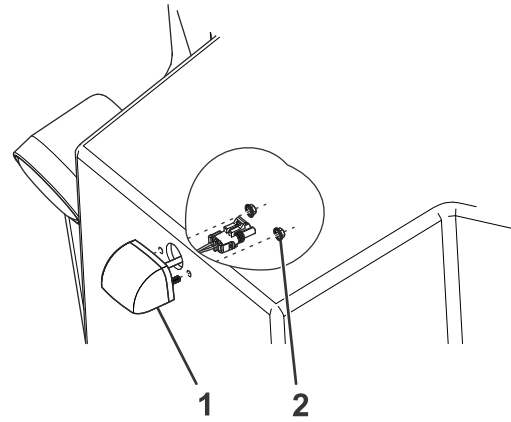


Figure 10

g296379

1. Light
2. Nut

7. Disconnect the wire harness from the rear light (Figure 8).
8. Connect the CHMSL connector on the light-kit wire harness to the rear light (Figure 8 and Figure 9).
9. **VBX spreaders only:** Pull the wire harnesses down through the hopper and install the previously removed rear light (Figure 8).
10. Connect the light-kit wire harness to the light kit light (Figure 7).
11. Secure the rear cover to the spreader hopper.
12. Attach the previously removed spinner assembly.

2. Torque the fasteners to 6 N·m (4.5 ft-lb).
3. If necessary, remove the cable tie securing the wire harness to the machine to gain access to the running-light connector.

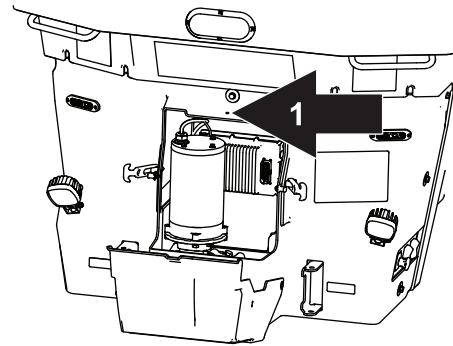


Figure 11

g531200

1. Cable tie location

4. Remove the dust cap from the running-light connector.
5. Connect the light to the running-light connector.
6. If necessary, secure the wire harness to the machine with a cable tie.
7. Secure the top cover with the latches.
8. Attach the previously removed spinner assembly.