

### Installation Instructions

1. Park your vehicle on a level surface, engage the parking brake, shut off the engine, and remove the key.
2. Install the light assemblies onto the brackets.
3. Install the light assembly to the rubber spacer and hand tighten the nut.

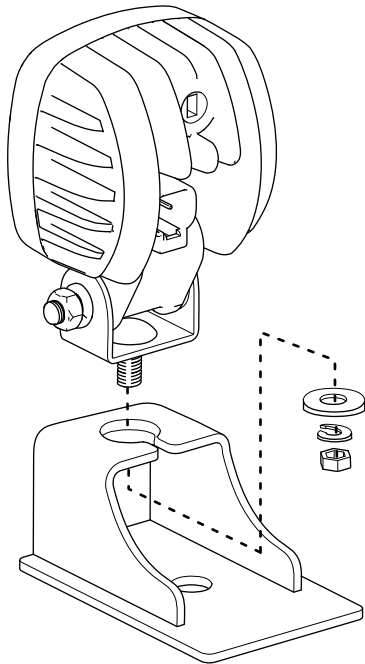


Figure 1

g340862

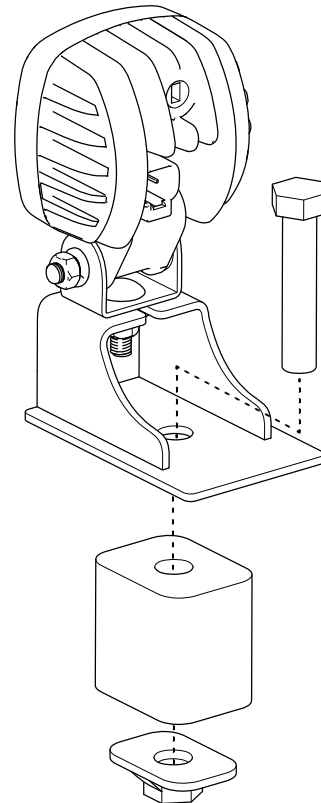


Figure 2

g340863



- Place the light assembly into the vehicle and rotate the light so that it faces the Drag Pro wings.

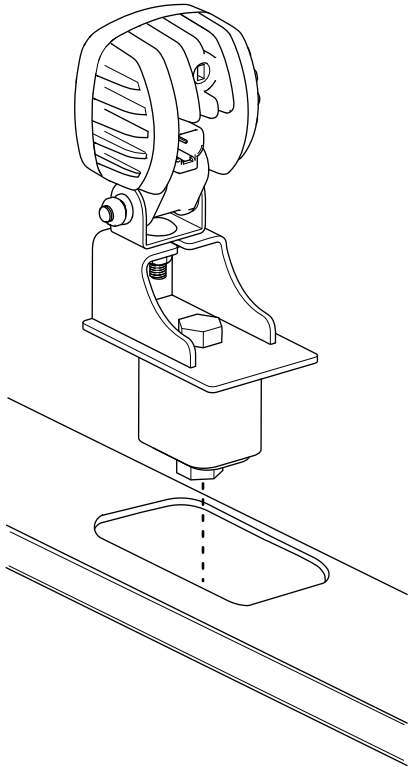


Figure 3

g341019

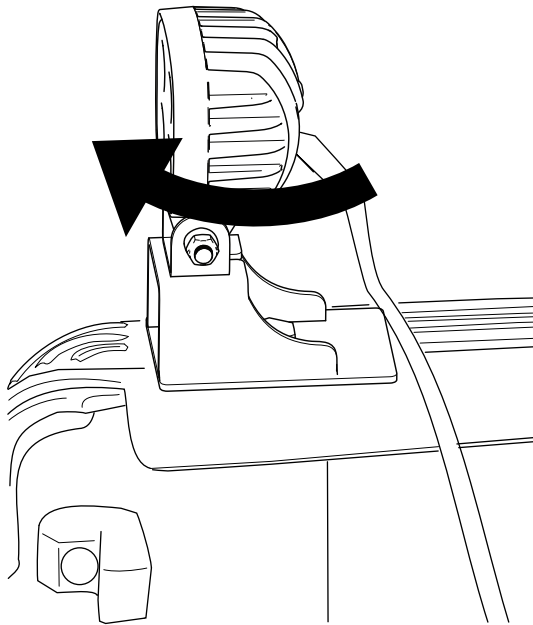


Figure 4

g341331

- After the light has been swiveled/oriented to your desired position, tighten the nut on the light stud.

- Tighten the nut so that the rubber compresses and forms underneath the stake pocket to secure the light assembly to the truck.
- On the Drag Pro harness, locate the orange and brown wires and remove the heat shrink covers.

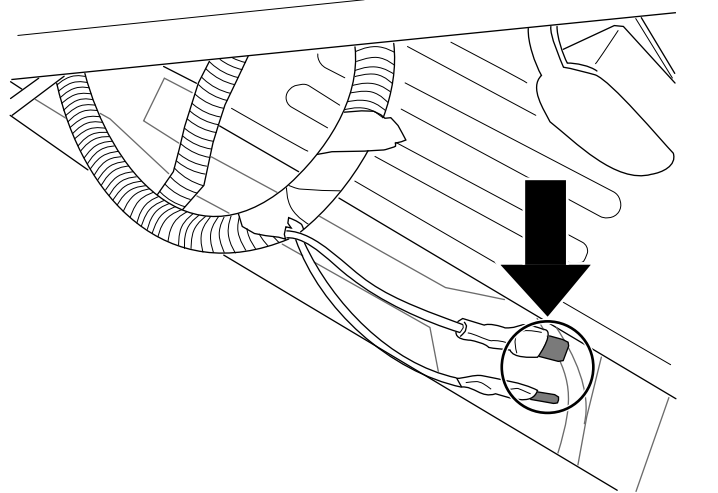


Figure 5

g341088

- Connect the Drag Pro harness to the work light harness. Connect the orange wires and brown wires together.

**Note:** These connections are located near the 6-pin Molex connector side of the harness (at the vehicle bumper).

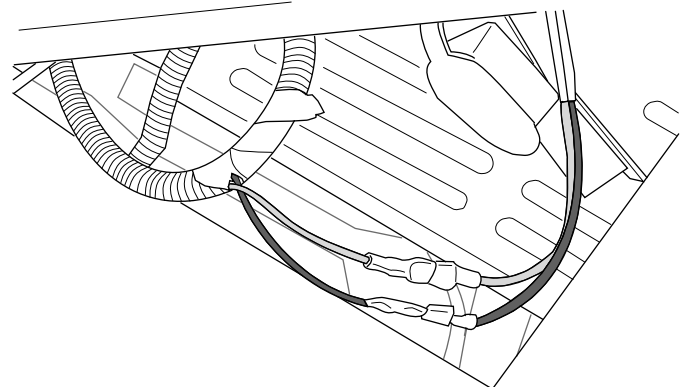


Figure 6

g341330

- Perform the following steps to install the light switch:
  - Locate the black and orange wires (with female spade connectors) near the 9-pin controller connector side of the harness (in the vehicle cab).
  - Connect the black and orange wires to the light switch.
  - Determine where you will mount the light switch and clean the area thoroughly.

**Note:** Allow the area to dry completely after cleaning.

- D. Remove the adhesive backing and press the toggle switch to the cleaned area of the dashboard for 30 seconds.
10. With the vehicle ignition switch in the ON position, use the light switch to check if the light turns on and turns off.

**BOSS**  
S N O W P L O W