

BOSS Products limited consumer warranty and BOSS Products commercial warranty policies are located at www.BOSSPlow.com.

Patents pending.

Safety

- Always follow the vehicle manufacturer's recommendations relating to system installation. For recommended vehicle models, refer to the *BOSS Snowplow Application Chart and Selection Guide*.
- Never disable, remove, or relocate any sensors or other components related to the operation of the air bags.
- To comply with federal regulations and to assure a safe vehicle, do not exceed the front gross-axle-weight rating (FGAWR), rear gross-axle-weight rating (RGAWR), and the gross-vehicle-weight rating (GVWR) at any time.
- Due to the variety of equipment that you can install on the vehicle and undercarriage, do not exceed the front gross-axle-weight rating (FGAWR), rear gross-axle-weight rating (RGAWR), and the gross-vehicle-weight rating (GVWR) at any time. This may require weighing the vehicle and adding ballast as necessary. It may also limit the payload capacity of the vehicle.

Installation

Determine the left and right sides of the machine from the normal operating position.

1. Park the machine on a level surface, shut off the engine, wait for all moving parts to stop, engage the parking brake, and remove the key.
2. Remove the front bumper and lower valance.
3. Remove the active air dam, tow hooks, and skid plate if equipped.
4. Loosely secure the left and right sideplates to the bottom of the frame using 2 bolts (M14), 2 split lock washers (M14), and existing hardware as shown in [Figure 1](#).

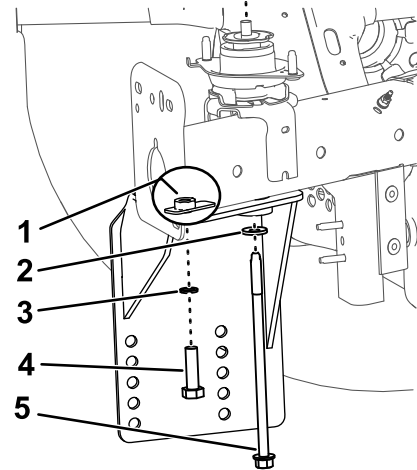


Figure 1

g328172

- | | |
|----------------------|------------------|
| 1. Welded nut | 4. Bolt (M14) |
| 2. Existing washer | 5. Existing bolt |
| 3. Split lock washer | |

5. Using the sideplates as a guide, mark and drill the holes for the top of the sideplates.
6. Loosely secure the front of the sideplates to the vehicle frame as shown in [Figure 2](#).



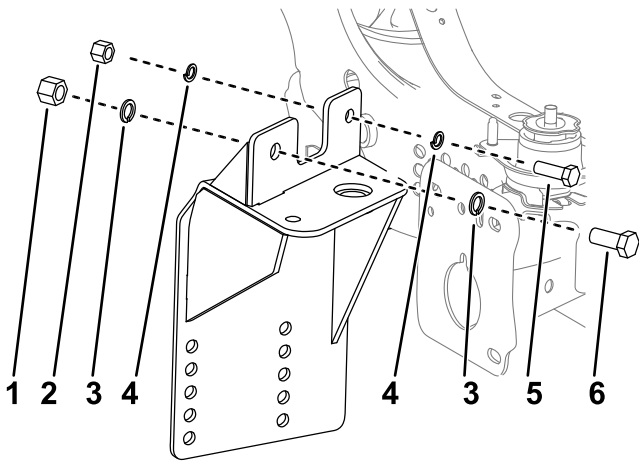


Figure 2

g328171

- | | |
|---------------------------------|---------------------------------|
| 1. Nut (5/8 inch) | 4. Split lock washer (1/2 inch) |
| 2. Nut (1/2 inch) | 5. Bolt (1/2-13 x 1-1/2 inches) |
| 3. Split lock washer (5/8 inch) | 6. Bolt (5/8-11 x 1-1/2 inches) |

7. Loosely secure the pushbeam to the side plates using 8 bolts (1/2-13 x 1-1/2 inches) and 8 nuts (1/2 inch).

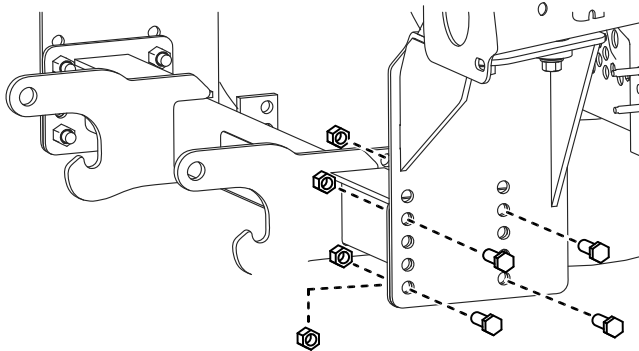


Figure 3

g328173

8. Loosely secure the rear bracket to the cross member.
- For vehicles not equipped with a skid plate, secure the sides of the bracket, mark and drill the hole for the remaining hole as noted in [Figure 4](#). Install the bracket using 4 bolts (1/2-13 x 1-1/2 inches), 8 split lock washers (1/2 inch), and 4 nuts (1/2 inch).
 - For vehicles equipped with a skid plate, install the bracket using existing hardware for the location noted in [Figure 4](#). Install the remainder of the bracket using 3 bolts (1/2-13 x 1-1/2 inches), 6 split lock washers (1/2 inch), and 3 nuts (1/2 inch).

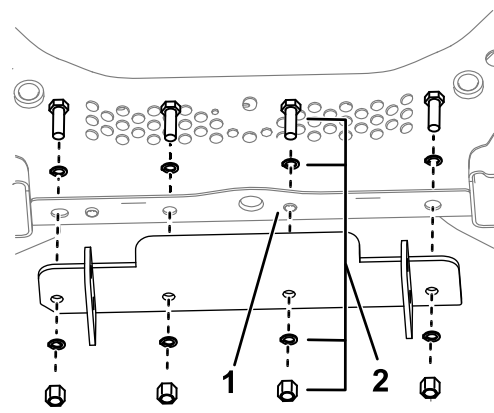


Figure 4

g328174

- | | |
|--|---|
| 1. Mark and drill this hole for vehicles not equipped with a skid plate. | 2. Use existing hardware for vehicles equipped with a skid plate. |
|--|---|

9. Loosely secure the angle brackets to the rear bracket using 4 bolts (1/2-13 x 1-1/2 inches) and 4 nuts (1/2 inch).

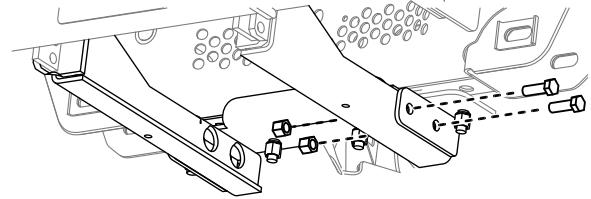


Figure 5

g328175

10. Loosely secure the angle brackets to the pushbeam using 4 bolts (1/2-13 x 1-1/2 inches) and 4 nuts (1/2 inch).

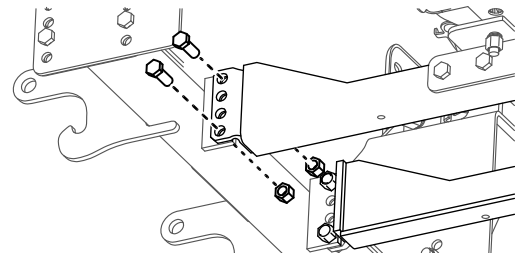
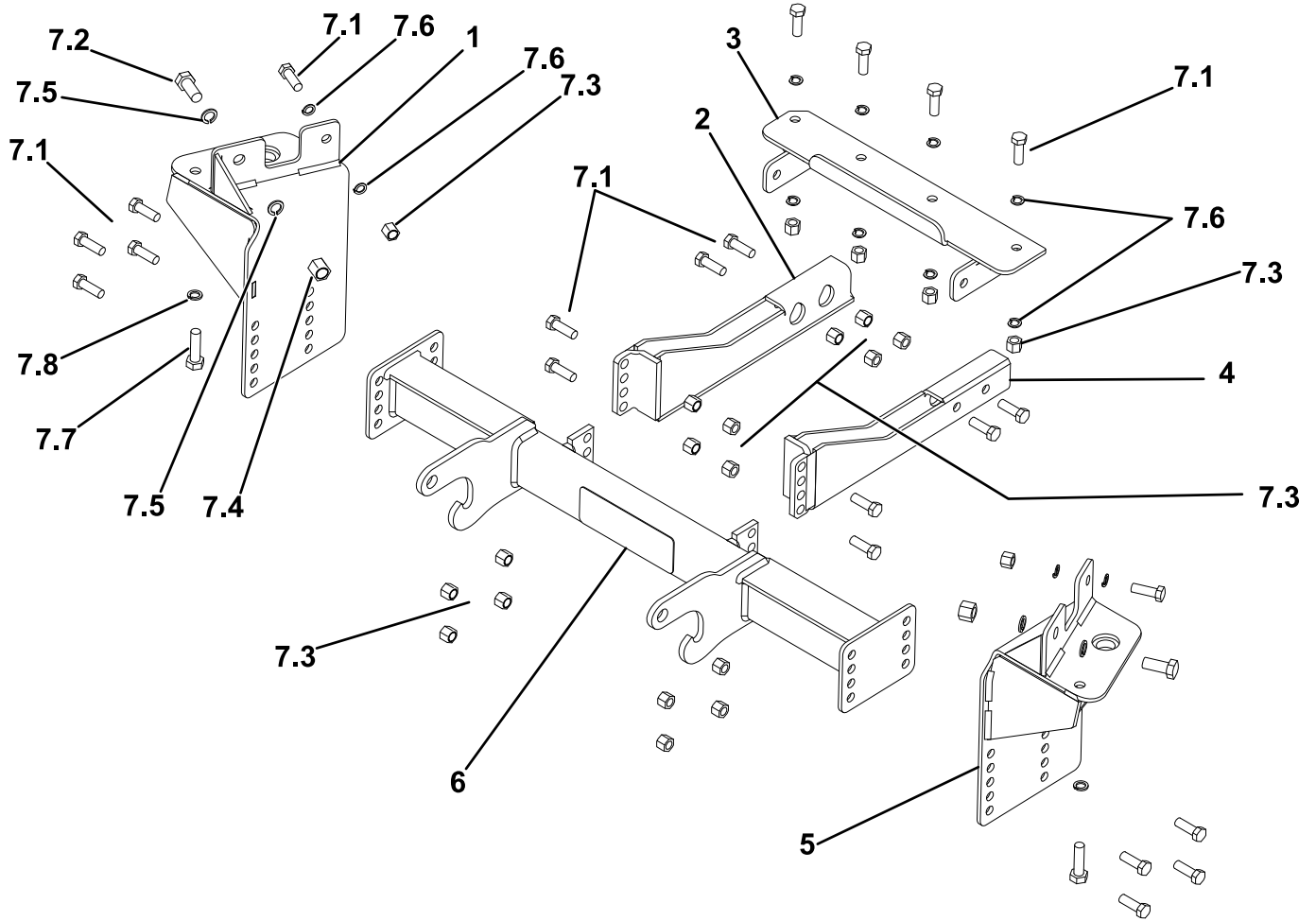


Figure 6

g328176

11. Install the bumper.
12. Torque all the fasteners to the following specifications:
- M14 bolts to 150 N·m (113 ft-lb)
 - 1/2-inch bolts to 76 N·m (56 ft-lb)
 - 5/8-inch bolts to 153 N·m (113 ft-lb)



Parts

g328177

Ref.	Part Number	Qty.	Description	Ref.	Part Number	Qty.	Description
1	PBA25044-03	1	PBSP ASM,PS,RAM 1500,19+	7:3	HDW01748	22	NUT, 1/2-13, NYL INS, YZN
2	LTA25055-03	1	ANG BRKT,PS,RAM, 1500, 19+	7:4	HDW05619	2	NUT, 5/8-11, NYL INS, YZN
3	LTA25058-03	1	SKID PLT MNT, RAM, 1500, 19+	7:5	HDW03891	4	WASHER-LOCK, SPLIT, 5/8, YZN
4	LTA25052-03	1	ANG BRKT, DS, RAM, 1500, 19+	7:6	HDW01732	12	WASHER, 1/2, SPLIT LOCK, YZN
5	PBA25043-03	1	PBSP ASM,DR,RAM 1500,19+	7:7	HDW01795	2	HHCS,M14-2X50MM, GR10. 9, YZN
6	PBA25045-03	1	PB ASSY,HTX, RAM 1500, 19+	7:8	HDW01796	2	WASHER-LOCK,SPLIT, M14, YZN
7	HDW25072	1	KIT-HARDWARE,RAM 1500,19+				
7:1	HDW01728	22	HHCS, 1/2-13 X 1-1/2, NC, GR5, YZN				
7:2	HDW01728	2	HHCS,5/8-11X1-1/2,GR5,YZN				

BOSS
S N O W P L O W