

Installation Instructions

BOSS Products limited consumer warranty and BOSS Patent www.ttcopats.com.
Products commercial warranty policies are located
at www.BOSSPlow.com.

Note: The tanks are for reference only and are not included in this kit.
Prior to installation, measure and cut the hoses to your desired length.

Installing the Kit

1. Install the fittings and hose to the bulk water tank as shown below.

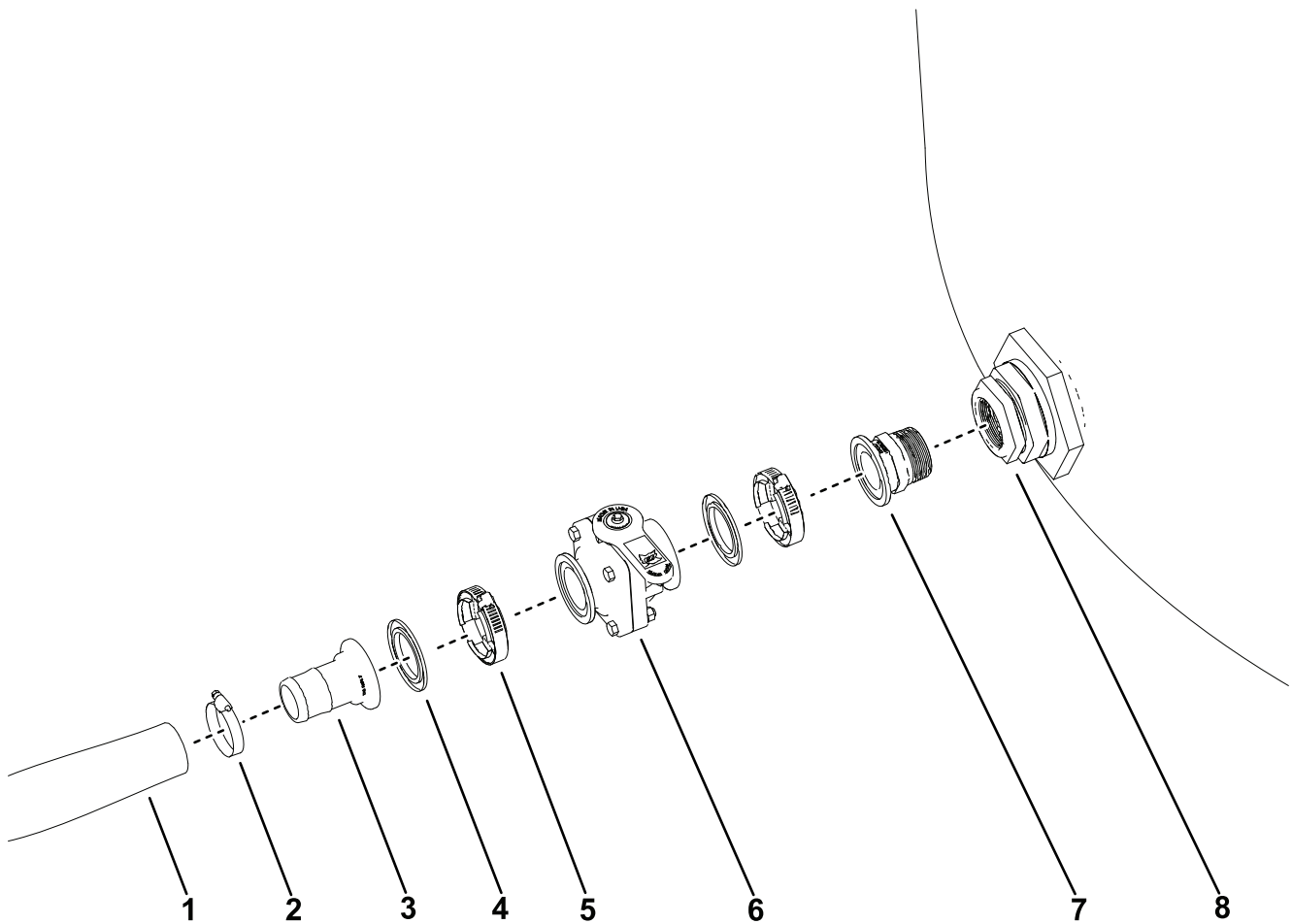


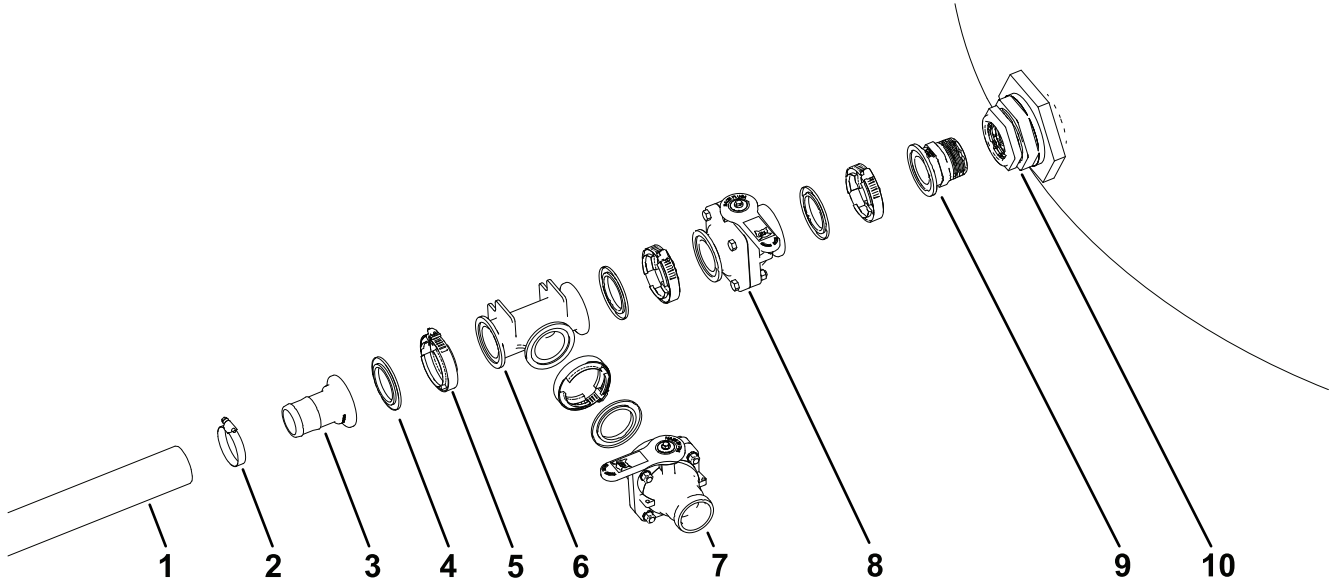
Figure 1

g502441

- | | |
|---------------------|-----------------------|
| 1. Water hose | 5. V-band clamp |
| 2. Hose clamp | 6. Ball valve |
| 3. Straight fitting | 7. Adapter fitting |
| 4. Flange gasket | 8. Water-tank fitting |



2. Use the hose clamp to connect the adapter fitting to the water hose. Install the water hose assembly to the brine maker.
3. Install the fittings and hose to the additive tank as shown below.



g502501

Figure 2

- | | | |
|---------------------|----------------------------------|---------------------------|
| 1. Additive hose | 5. V-band clamp | 9. Adapter fitting |
| 2. Hose clamp | 6. Tee fitting | 10. Additive-tank fitting |
| 3. Straight fitting | 7. Ball valve with quick connect | |
| 4. Flange gasket | 8. Ball valve | |

-
4. Use the hose clamp to connect the adapter fitting to the additive hose. Install the additive hose assembly to the brine maker.

5. Install the fittings and connector hose to the brine tank 1 as shown below.

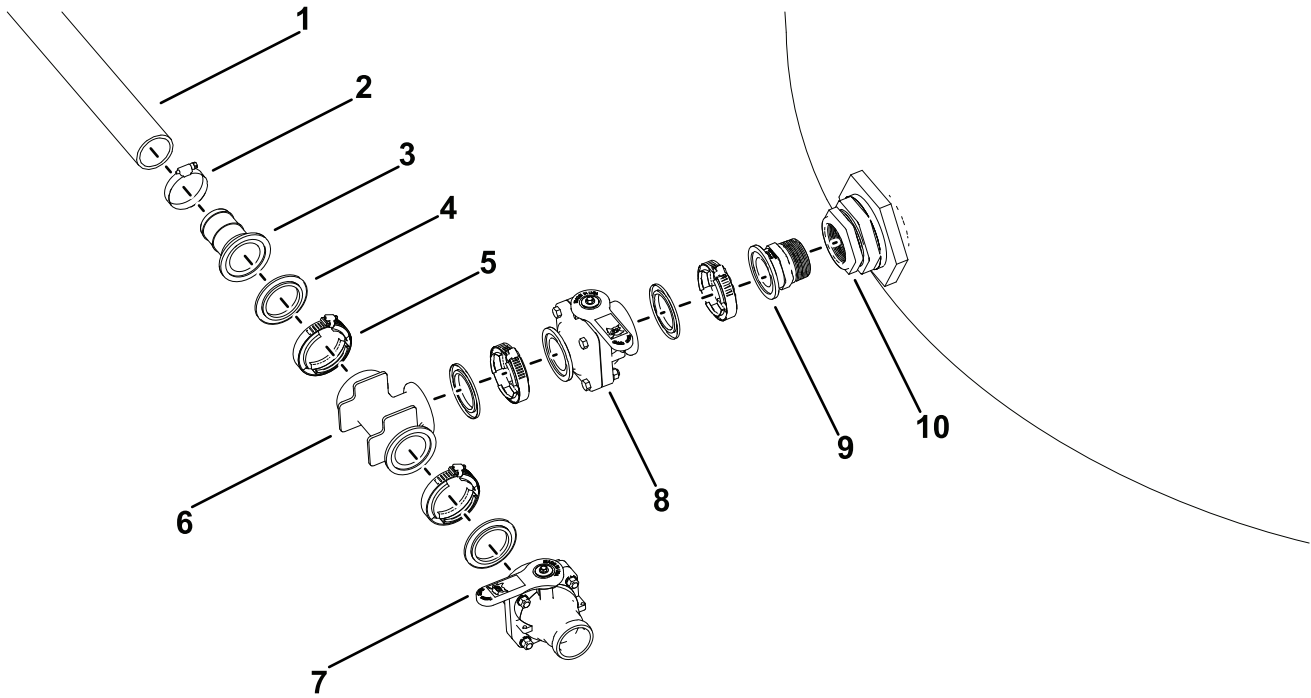


Figure 3

g502534

- 1. Connector hose
- 2. Hose clamp
- 3. Straight fitting
- 4. Flange gasket

- 5. V-band clamp
- 6. Tee fitting
- 7. Ball valve with quick connect
- 8. Ball valve

- 9. Adapter fitting
- 10. Brine-tank 1 fitting

6. Install the fittings, connector hose, and brine hose to the brine tank 2 as shown below.

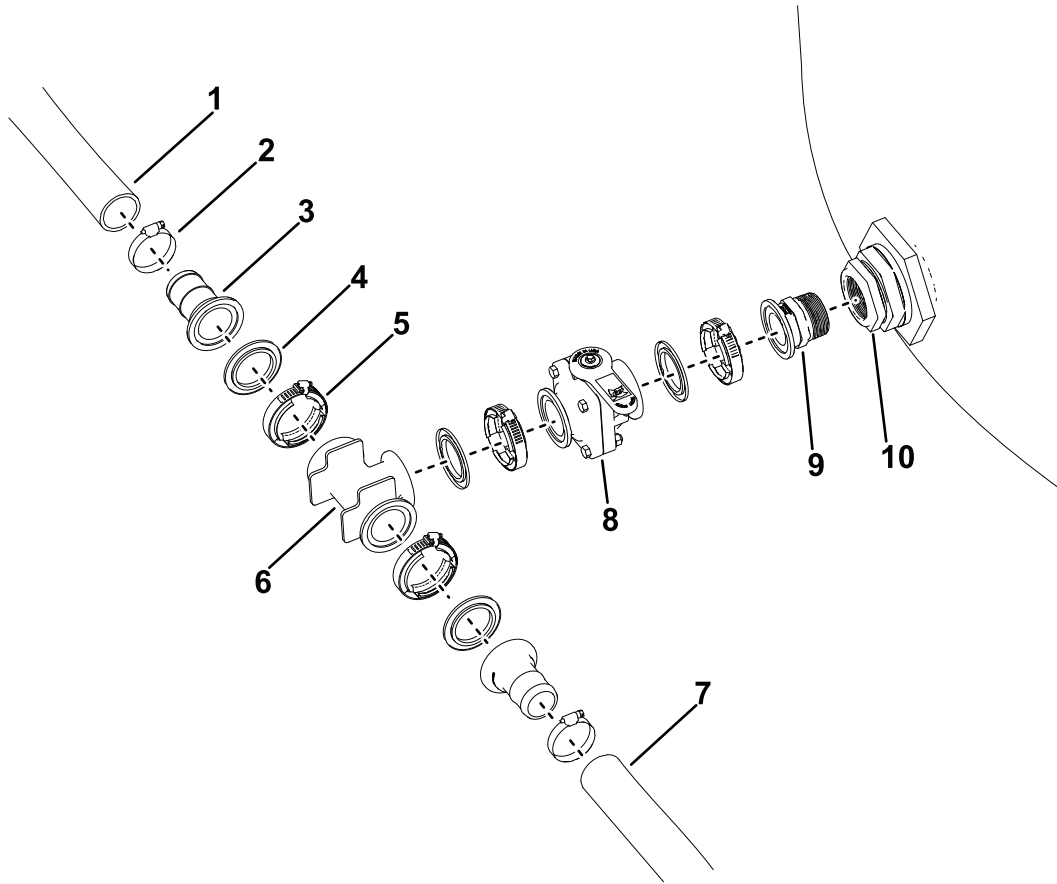


Figure 4

g502575

- | | | |
|----------------------|-------------------|--------------------------|
| 1. Brine tank 2 hose | 5. V-band clamp | 9. Adapter fitting |
| 2. Hose clamp | 6. Tee fitting | 10. Brine-tank 2 fitting |
| 3. Straight fitting | 7. Connector hose | |
| 4. Flange gasket | 8. Ball valve | |

7. Use the hose clamp to connect the adapter fitting to the brine hose. Install the brine hose assembly to the brine maker.