

BOSS Products limited consumer warranty and BOSS Products commercial warranty policies are located at www.BOSSPlow.com.

Patent www.ttcopats.com.

Safety

- Always follow the vehicle manufacturer's recommendations relating to system installation. For recommended vehicle models, refer to the *BOSS Snowplow Application Chart and Selection Guide*.
- Never disable, remove, or relocate any sensors or other components related to the operation of the air bags.
- To comply with federal regulations and to assure a safe vehicle, do not exceed the front gross-axle-weight rating (FGAWR), rear gross-axle-weight rating (RGAWR), and the gross-vehicle-weight rating (GVWR) at any time.
- Due to the variety of equipment that you can install on the vehicle and undercarriage, do not exceed the front gross-axle-weight rating (FGAWR), rear gross-axle-weight rating (RGAWR), and the gross-vehicle-weight rating (GVWR) at any time. This may require weighing the vehicle and adding ballast as necessary. It may also limit the payload capacity of the vehicle.

Installation

Note: To achieve the proper pushbeam height, installation of a 1 inch leveling kit is recommended.

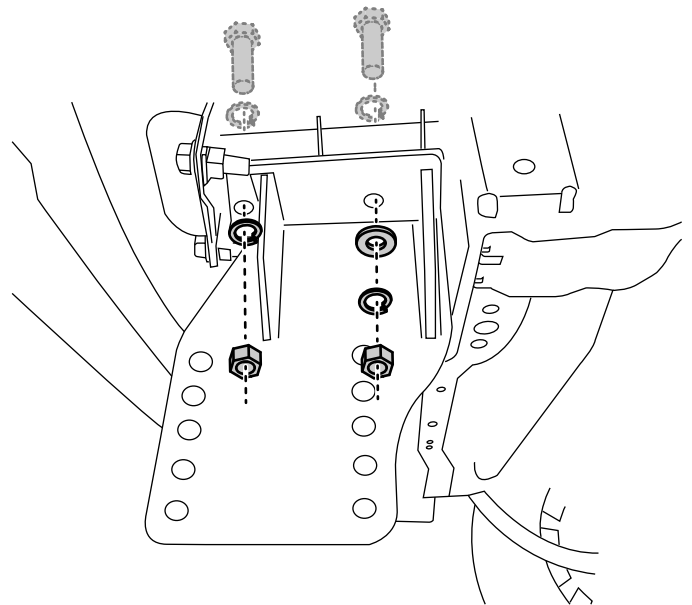
Determine the left and right sides of the vehicle from the normal operating position.

1. Park the vehicle on a level surface, shut off the engine, wait for all moving parts to stop, engage the parking brake, and remove the key.
2. Remove the skid plate or splash shield, active air dam, and plastic frame plugs to allow access to the bolts.

Note: You may need to cut into your bumper to install this kit.

3. Loosely secure the underside of the sideplates to the vehicle frame with 4 bolts, 8 split washers, 2 washers (1/2 inch), and 4 nuts.

To place the bolts inside the vehicle frame, thread a bolt onto the bolt puller and pull the end of the bolt puller through the holes. Carefully remove the bolt, secure it with a nut, and repeat with the remaining bolts.



g417164

Figure 1

Left front of the vehicle shown



4.

⚠ WARNING

Using a drill without proper eye protection may allow debris to enter the eye, causing injury.

When drilling, always wear eye protection.

Drill two 9/16 inch holes in the frame for the sideplates. Loosely secure the sideplates to the inside of the vehicle frame using 4 bolts, 8 split washers, 4 washers (1/2 inch), and 4 nuts.

To place the bolts inside the vehicle frame, thread a bolt onto the bolt puller and pull the end of the bolt puller through the holes. Carefully remove the bolt, secure it with a nut, and repeat with the remaining bolts.

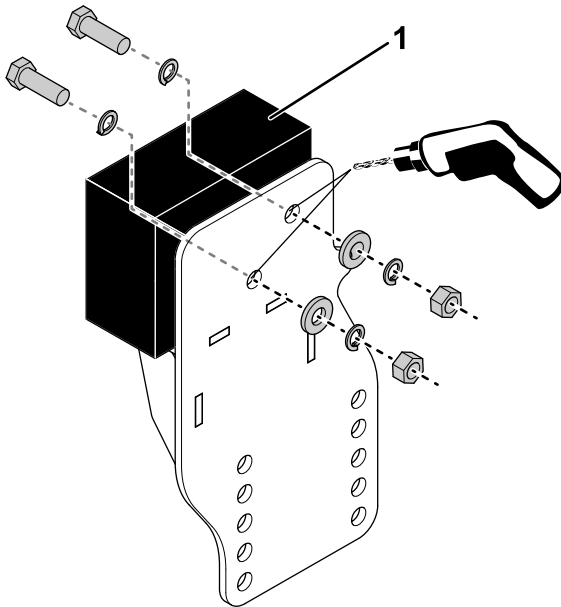


Figure 2

g417176

1. Vehicle frame

5. Loosely secure the pushbeam assembly to the sideplates using 8 bolts and 8 locknuts. Refer to the Recommended Pushbeam Height table below.

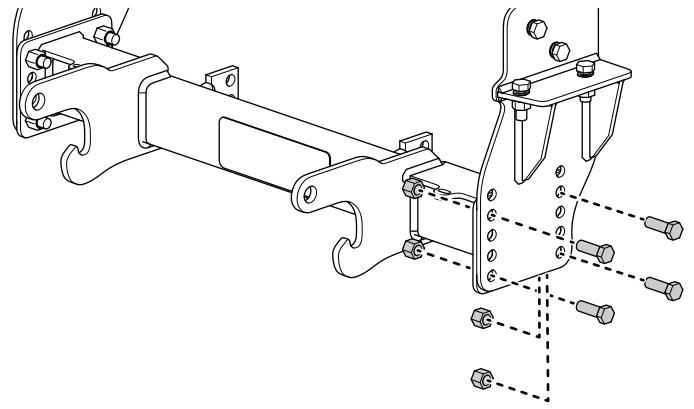


Figure 3

g415823

Recommended Pushbeam Height

Plow Type	Recommended Pushbeam Height
Rear Mounted Plow	48 cm (19 inches)
UTV	44-1/2 cm (17-1/2 inches)
Heavy Duty	15 cm (16-1/2 inches)
Standard Duty	39 cm (15-1/2 inches)
HTX/Sport Duty	37 cm (14-1/2 inches)

6. Loosely secure the angle bracket to the support arms using 4 bolts, 4 washers (1/2 inch), and 4 locknuts.

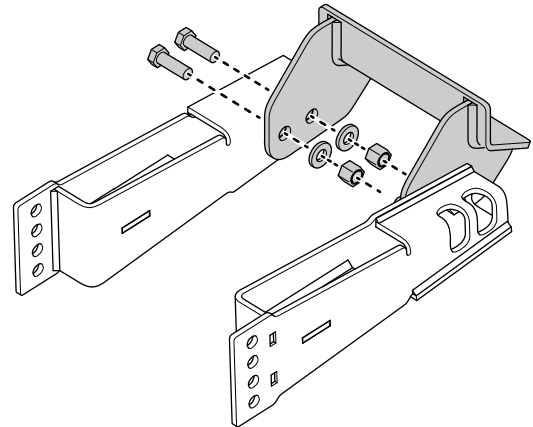


Figure 4

g415825

- Loosely secure the angle bracket and support arm assembly to the pushbeam using 4 bolts and 4 locknuts.

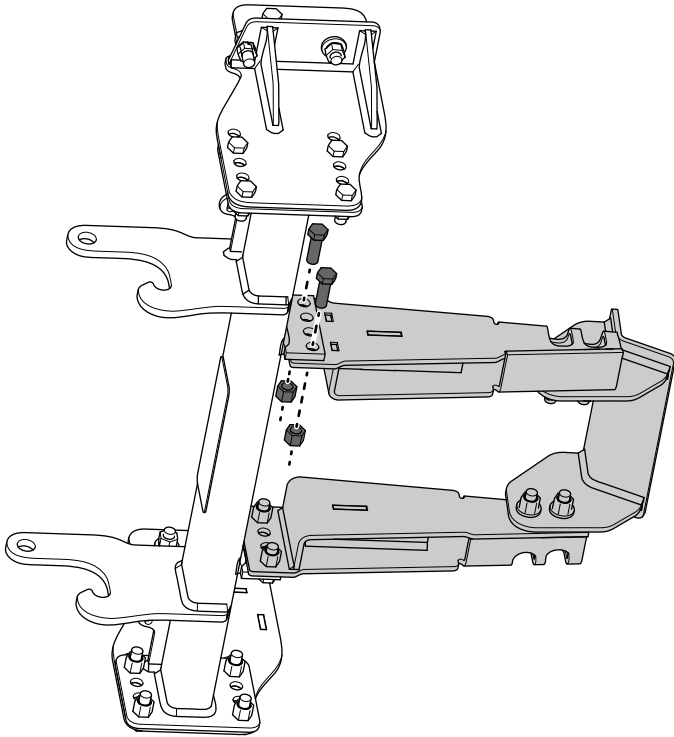


Figure 5

g415826

-
-
-
-
-
-
-
-

⚠ WARNING

Using a drill without proper eye protection may allow debris to enter the eye, causing injury.

When drilling, always wear eye protection.

Mark and drill two 9/16 inch holes for the angle bracket on the frame.

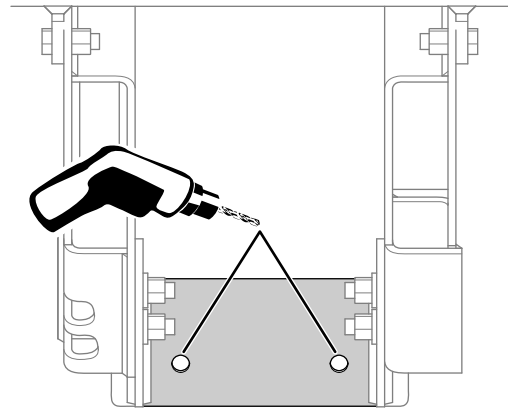


Figure 6

View from underneath the front of the vehicle

g415827

-
-
-
-
-
-
-
-
- Loosely secure the rear of the angle bracket to the vehicle frame using 2 bolts, 4 split washers, 2 washers (1/2 inch), and 2 nuts.

To place the bolt inside the vehicle frame, thread a bolt onto the bolt puller and pull the end of the bolt puller through the holes. Carefully remove the bolt, secure it with a nut, and repeat with the remaining bolt.

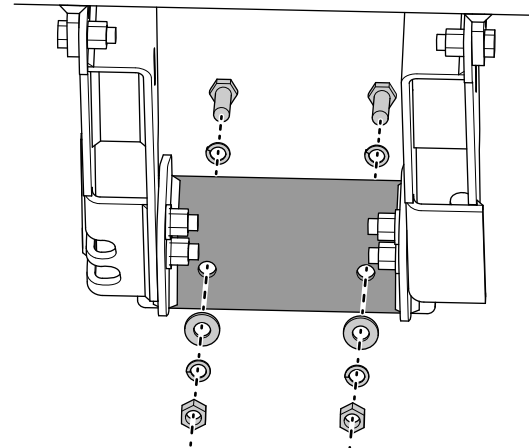
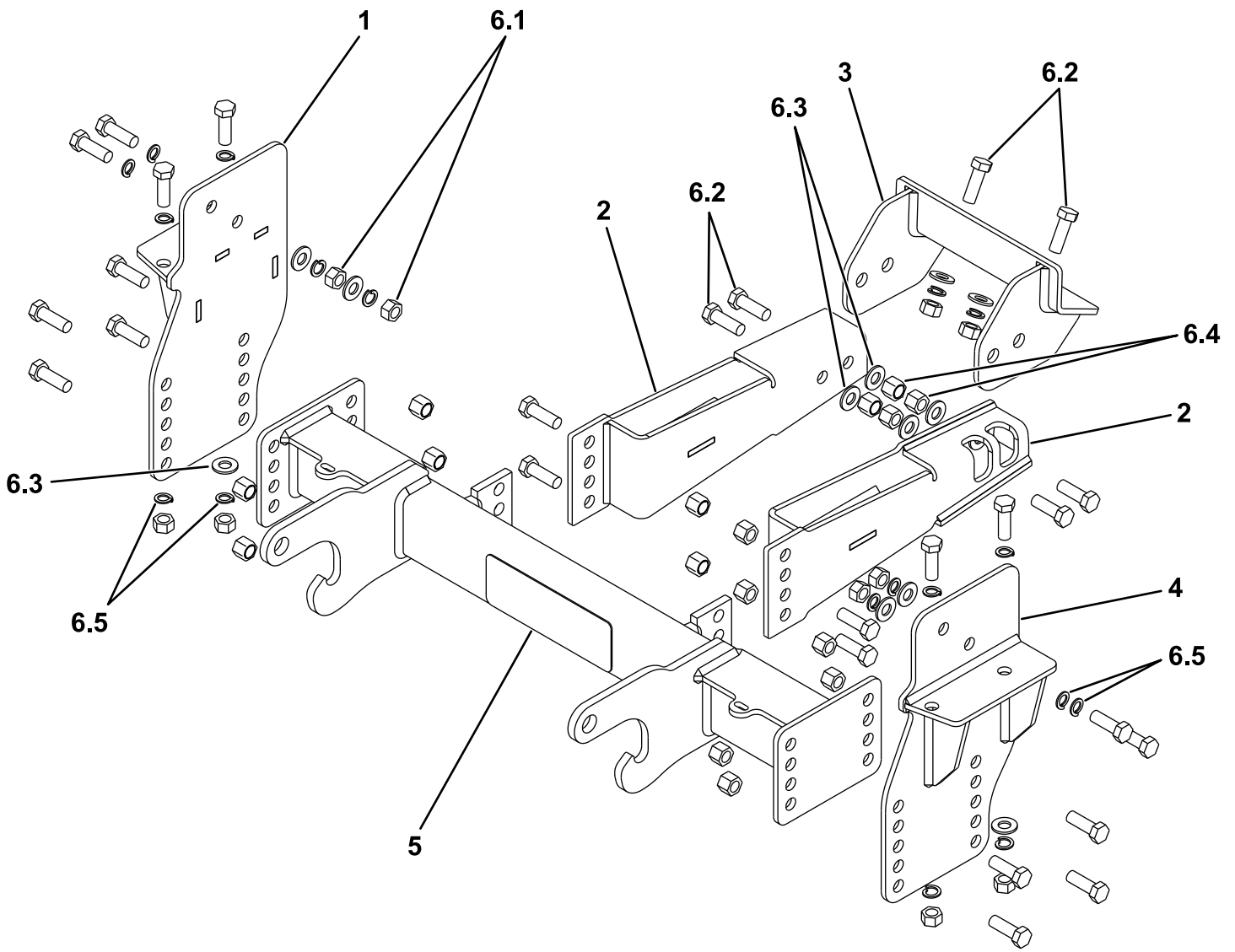


Figure 7

g415828

-
-
-
-
-
-
-
-
-
- Torque all the fasteners to 76 N·m (56 ft-lb).



Parts

g416120

Ref.	Part Number	Qty.	Description	Ref.	Part Number	Qty.	Description
1	PBA25905-03	1	PUSH BEAM SIDEPLATE PASSENGER SIDE (RH)	6	HDW25913	1	FASTENER KIT
2	LTA25906-03	2	ANGLE ARM SUPPORT	6:1	HDW02410	10	1/2" - 13 HEX HEAD FIN FULL YZN NUT
3	LTA25910-03	1	ANGLE BRACKET	6:2	HDW01728	26	1/2" - 13 X 1-1/2" HEX HEAD BOLT GR 5
4	PBA25901-03	1	PUSH BEAM SIDEPLATE DRIVER SIDE (LH)	6:3	HDW01729	12	WASHER, FLAT, 1/2"
5	PBA09827-03	1	PUSHBEAM	6:4	HDW01748	16	1/2" - 13 HEX HEAD NYLON LOCKNUT
				6:5	HDW01732	20	WASHER, SPLIT LOCK, 1/2" YZN