

## Installing the Kit on Straight-Blade Plows

- Trim the belting to the specifications for your plow listed below:
  - For 7'0" Plows, cut the belting to 2.13 m (84 inches).
  - For 7'6" Plows, cut the belting to 2.28 m (90 inches).
- Clamp the belting to the top edge of the plow blade.

**Note:** If you are installing this kit on a plow with a blade wing extension, place the belting over the spring bracket.

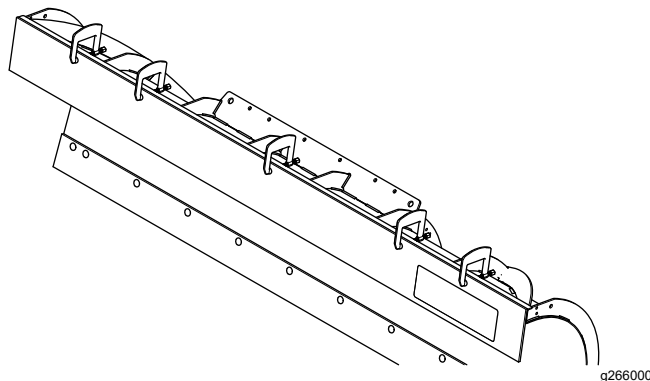


Figure 1

**Note:** Ensure that the point of the 45° strap is toward the outside of the plow blade.

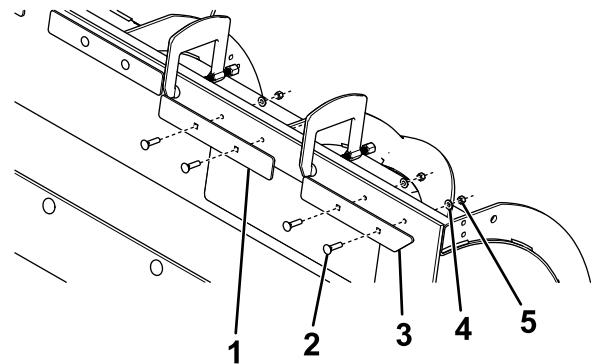


Figure 2

- |                              |                              |
|------------------------------|------------------------------|
| 1. Square strap              | 4. Washer (5/16 inch)        |
| 2. Carriage bolt (5/16 inch) | 5. Nylon locknut (5/16 inch) |
| 3. 45° strap                 |                              |

- Secure the square straps to the remaining holes using 8 carriage bolts (5/16 inch), 8 washers (5/16 inch), and 8 nylon locknuts (5/16 inch).
- Torque the bolts to 26.7 N·m (19.7 ft-lb).

- Using the holes in the plow blade as a guide, drill 9.5 mm (3/8 inch) holes through the belting.

**Note:** If your plow does not have holes to use as a guide, use [Figure 2](#) as a drilling guide.

### ⚠ WARNING

Using a drill without proper eye protection may allow debris to enter the eye, causing injury.

When drilling, always wear eye protection.

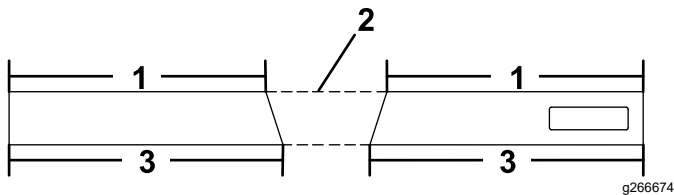
- Secure the 45° straps to the outer holes using 4 carriage bolts (5/16 inch), 4 washers (5/16 inch), and 4 nylon locknuts (5/16 inch).



# Installing the Kit on V-Blade Plows

**Note:** Ensure that the plow is in the V-position before beginning the installation.

1. Cut the belting as shown in [Figure 3](#) using the specifications for your plow listed below:
  - For 7'6" Plows, the top measurement is 1.09 m (43 inches) and the bottom measurement is 1.14 m (45 inches).
  - For 8'0" Plows, the top measurement is 1.17 m (46 inches) and the bottom measurement is 1.21 m (48 inches).



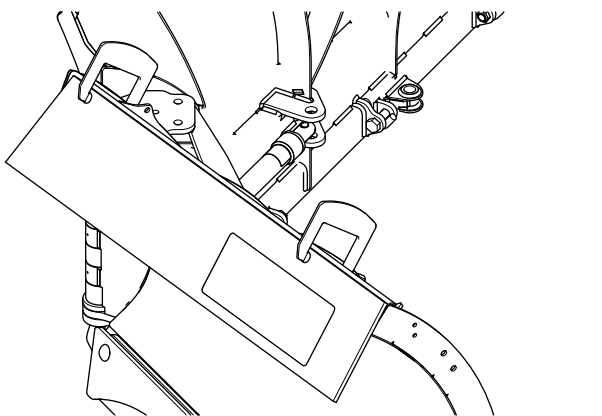
**Figure 3**

1. Top measurement
2. Remove
3. Bottom measurement

2. Clamp the belting to the top edge of the plow blades.

**Note:** Ensure that the straight edges are on the outside of the plow blades.

**Note:** If you are installing this kit on a plow with a blade wing extension, place the belting over the spring bracket.



**Figure 4**

3. Using the holes in the plow blades as a guide, drill 9.5 mm (3/8 inch) holes through the belting.

**Note:** If your plow does not have holes to use as a guide, use [Figure 5](#) as drilling guide.

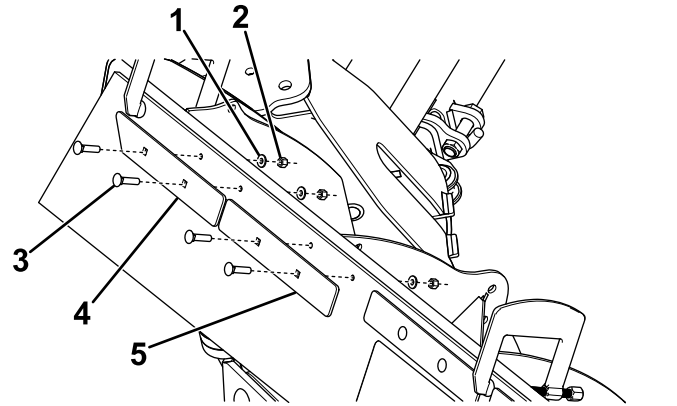
## ⚠ WARNING

Using a drill without proper eye protection may allow debris to enter the eye, causing injury.

When drilling, always wear eye protection.

4. Secure the 45° straps to the inner holes using 4 carriage bolts (5/16 inch), 4 washers (5/16 inch), and 4 nylon locknuts (5/16 inch).

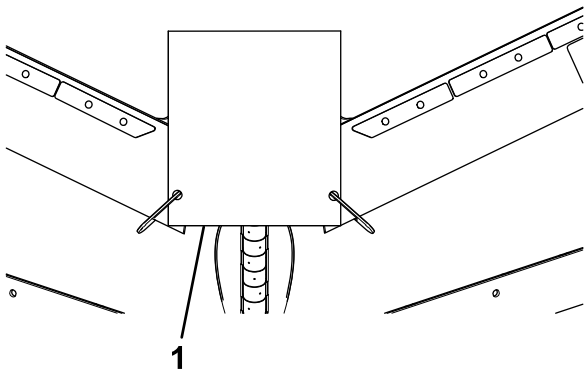
**Note:** Ensure that the point of the 45° strap is toward the center of the plow blades.



**Figure 5**

1. Washer (5/16 inch)
2. Nylon locknut (5/16 inch)
3. Carriage bolt (5/16 inch)
4. 45° strap
5. Square strap

5. Secure the remaining 4 square straps to the remaining holes using 8 carriage bolts (5/16 inch), 8 washers (5/16 inch), and 8 nylon locknuts (5/16 inch).
6. Clamp the center belting in place ([Figure 6](#)) after aligning it as follows:
  - Position the center belting so the long edge is vertical.
  - Position the center belting horizontally so that equal amounts overlap both side belting sections.
  - Position the bottom corners of the center belting along the bottom edge of the side belting sections. The inner points of the side belting sections should extend approximately 3.8 cm (1-1/2 inches) past the edge of the center belting.



**Figure 6**

g266677

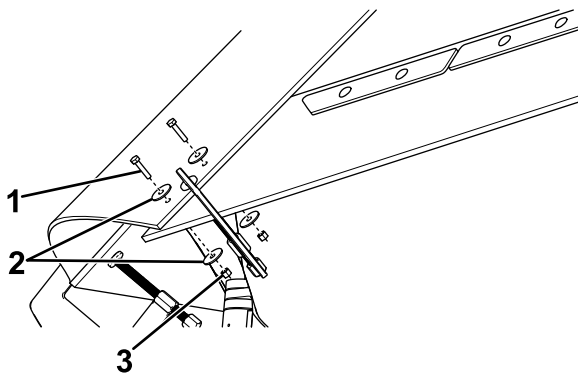
1. Center belting

7. Find the center of the overlapped belting and measure up approximately 3.8 cm (1-1/2 inches) from the bottom of the center belting.
8. Drill a 9.5 mm (3/8 inch) hole through the belting, and secure the 2 sections together using a bolt (1/4 inch), 2 fender washers, and a nylon locknut (1/4 inch).

**⚠ WARNING**

Using a drill without proper eye protection may allow debris to enter the eye, causing injury.

When drilling, always wear eye protection.



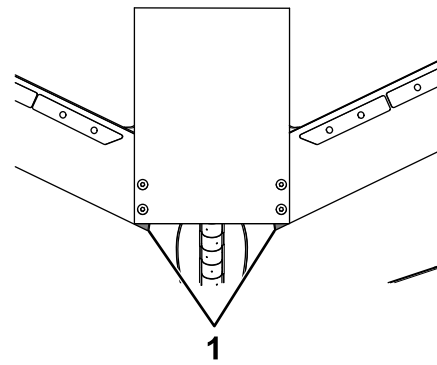
**Figure 7**

g266678

- |                    |                             |
|--------------------|-----------------------------|
| 1. Bolt (1/4 inch) | 3. Nylon locknut (1/4 inch) |
| 2. Fender washer   |                             |

9. Measure 6.4 cm (2-1/2 inches) up from the previously installed bolt and drill a 9.5 mm (3/8 inch) hole through the belting.
10. Secure the 2 sections together using a bolt (1/4 inch), 2 fender washers, and a nylon locknut (1/4 inch) as shown in [Figure 7](#).
11. Repeat steps 7 through 10 on the other side of the center belting.

12. Trim the inner corners of the 2 belting sections to be flush with the bottom of the center belting.



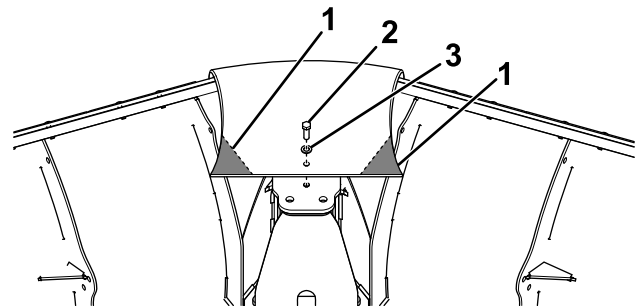
**Figure 8**

g266679

1. Trim

13. Find the center of the free end of the center belting and measure down 3.8 cm (1-1/2 inches).
14. Drill a 7.9 mm (5/16 inch) hole through the belting, and secure it to the top of the plow center section using a bolt (3/8 inch) and washer (3/8 inch).

**Note:** If your plow does not have a threaded hole in the plow center section, you will need to add one. Measure 8.8 cm (3-1/2 inches) rearward of the vertical hinge pin, and drill and tap a hole for a 3/8–16 inch bolt.



**Figure 9**

g266680

- |                    |                      |
|--------------------|----------------------|
| 1. Trim            | 3. Washer (1/2 inch) |
| 2. Bolt (1/2 inch) |                      |

15. Trim the corners of the center belting to prevent it from interfering with the plow movement.

**BOSS**  
S N O W P L O W