

BOSS Products limited consumer warranty and BOSS Products commercial warranty policies are located at www.BOSSPlow.com.

Patent www.ttcopats.com.

Safety

Always follow the vehicle manufacturer's recommendations relating to system installation.

Due to the variety of equipment that you can install using the undercarriage, ensure that the gross-vehicle-weight rating (GVWR) is not exceeded at any time. You may need to weigh the vehicle and add ballast or limit the payload of the vehicle to compensate.

Installation

1. Park the vehicle on a level surface, engage the parking brake, shut off the engine, and remove the key.
2. If your vehicle is equipped with a winch, remove the 2 existing hex bolts on the fairlead and the 4 bolts holding the winch.

3. Use the skid-plate assembly as a template and mark the 4 hole locations on the bottom of the vehicle.

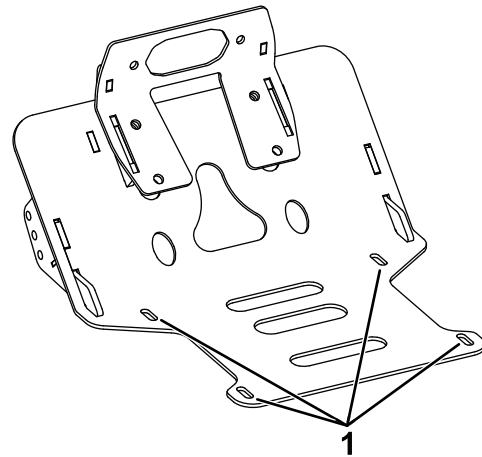


Figure 1

g499121

1. Hole locations



⚠ WARNING

Using a drill without proper eye protection may allow debris to enter the eye, causing injury.

When drilling, always wear eye protection.

- Using a drill bit (7/16 inch), drill the 4 marked hole locations on the vehicle's metal skid plate.
- On the 2 upper support brackets, install 1 clip nut on the outside slot of each bracket with the threaded portion of the clip nut facing up.

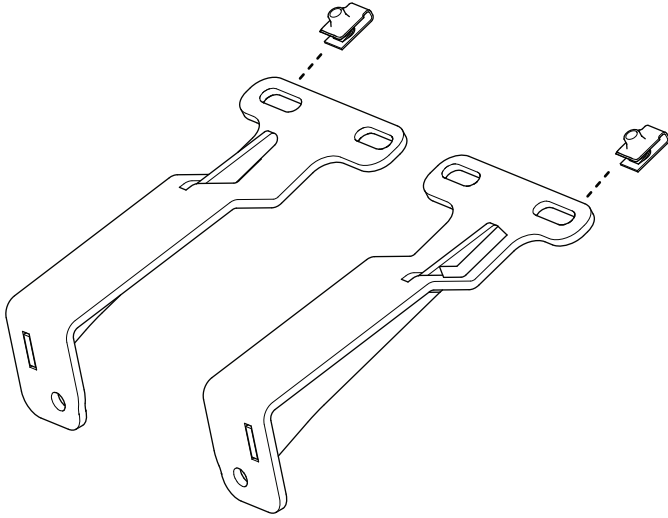


Figure 2

g494592

- Attach the upper support brackets to the vehicle-frame crossmember using 2 bolts (5/16 x 1 inch). The bolts will come up from the bottom of the crossmember and into the clip nuts.

Note: The bolts go through the existing holes in the crossmember.

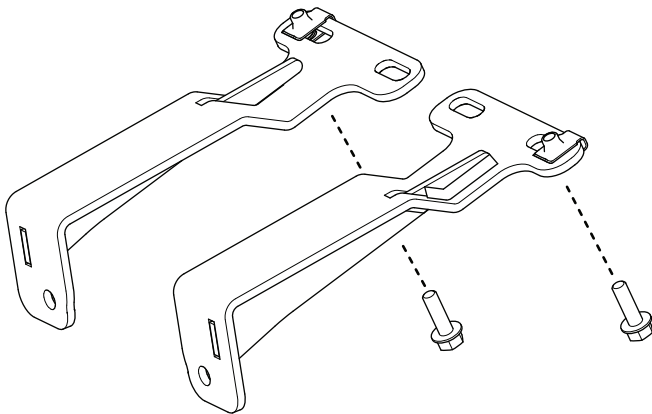


Figure 3

The machine is not shown

g494593

- Use 6 bolts (3/8 x 1-3/4 inches) and 6 locknuts (3/8 inch) to attach the front of the skid-plate assembly, upper support brackets, and backer plate to the vehicle frame.

Note: If your vehicle is equipped with winch, use 2 of the supplied bolts (3/8 x 1-3/4 inches) and 2 of the supplied locknuts (3/8 inch) to attach the fairlead, skid-plate assembly, and upper support brackets.

Install the fairlead to the face of the skid-plate assembly and then use the factory hardware to attach the skid-plate assembly and winch. The backer plate is not required.

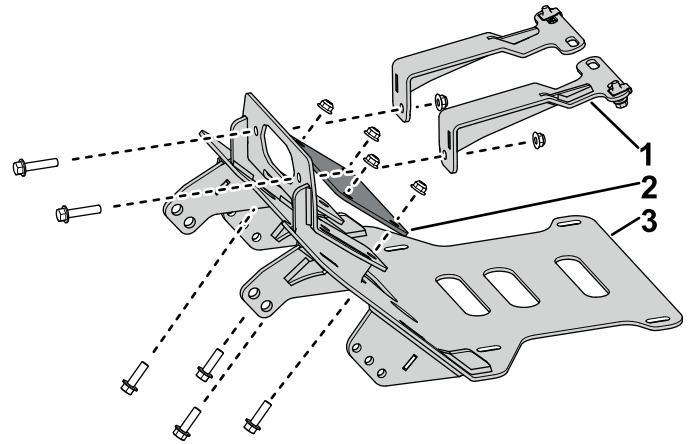


Figure 4

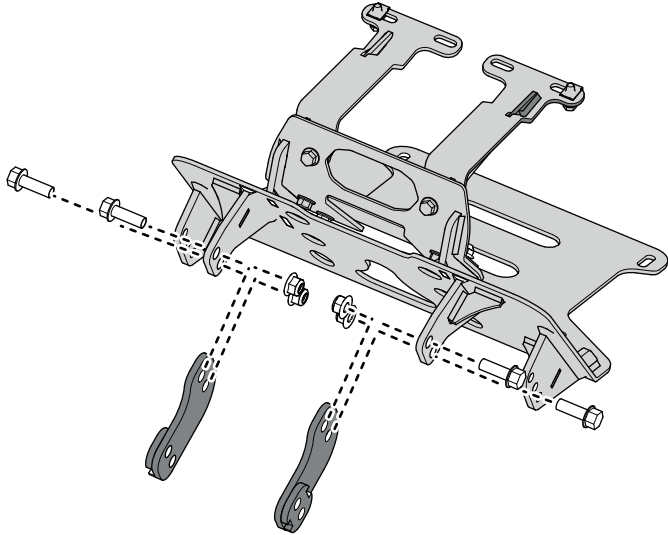
The machine is not shown

g494605

- Upper support bracket
- Backer plate
- Skid-plate assembly

- Install the 4 bolts (3/8 x 1-1/4 inches) and 4 locknuts (3/8 inch) securing the lower skid-plate assembly to the bottom of the vehicle.

- Use the 4 bolts (1/2 x 1-1/2 inches) and 4 locknuts (1/2 inch) to install the upper intermediate bracket weldments to the upper tabs on the skid-plate assembly.



g494606

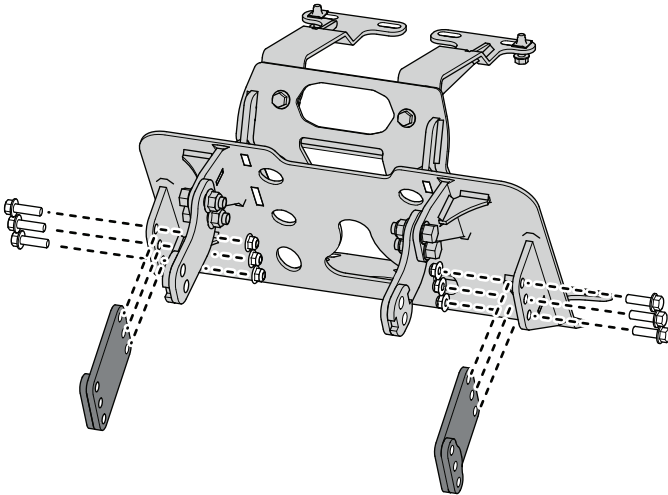
Figure 5

The machine is not shown

- Attach the pushbeam assembly to the intermediate brackets using 4 bolts (1/2 x 2 inches), 4 locknuts (1/2 inch), 6 bolts (3/8 x 1-3/4 inches), and 6 locknuts (3/8 inch).
- Torque the bolts (1/2 inch) to 80 N·m (59 ft-lb) and torque the bolts (3/8 inch) to 35 N·m (26 ft-lb).

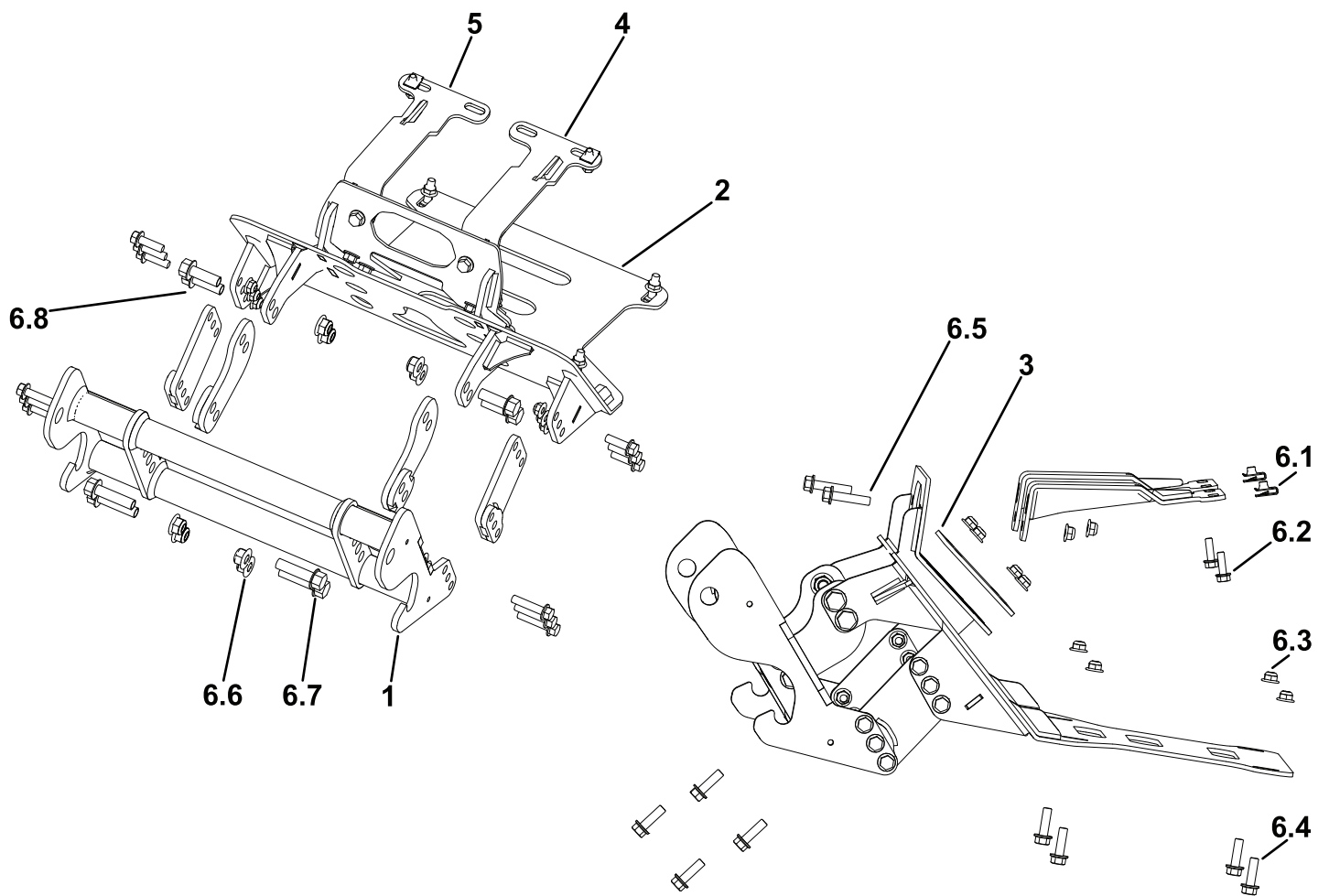
-
- Use the 6 bolts (3/8 x 1-1/4 inches) and 6 locknuts (3/8-16 inch) to install the lower intermediate brackets to the lower tabs on the skid-plate assembly.

Note: The welded on spacers should be on the pushbeam side and will all be facing the outside of the vehicle.



g494622

Figure 6



g494667

Ref.	Part Number	Qty.	Description
1	PBA12535-03	1	PUSHBEAM ASM RT3,UTV,COMMON
2	LTA27910-03	1	SKID PLT WLDMT,UC,CAN-AM DFDR,16+
3	LTA12161-03	1	BKR PLT,UC,CAN-AM DFDR,2016+
4	LTA27917-03	1	SPRT PASS WLDMT,UC,CAN-AM DFDR,2016+
5	LTA27911-03	1	UP SPRT DR WLDMT,UC,CAN-AM DFDR,2016+
6	HDW27935	1	KIT-FASTENER,UC,CAN-AM DEFENDER,16+
6.1	115-7721	2	NUT-CLIP, U [5/16-18, .05-.20]
6.2	139-2596	2	SCREW-HHF [5/16-18 X 1.0, BZ, GR5]
6.3	HDW27962	22	NUT-HF [3/8-16, NYLOCK, GR N5, BZ]
6.4	HDW27943	10	SCREW-HHF [3/8-16 X 1.25, GR5, BZ]
6.5	139-2594	12	SCREW-HHF [3/8-16 X 1.75, GR5, BZ]
6.6	HDW27963	8	NUT-HF [1/2-13, NYLOCK, GR N5, BZ]
6.7	HDW27949	4	SCREW-HHF [1/2-13 X 2, GR5, BZ]
6.8	HDW27948	4	SCREW-HHF [1/2-13 X 1.5, GR5, BZ]