

BOSS Products limited consumer warranty and BOSS Products commercial warranty policies are located at [www.BOSSPlow.com](http://www.BOSSPlow.com).

Patent [www.ttcopats.com](http://www.ttcopats.com).

## Safety

- Always follow the vehicle manufacturer's recommendations relating to system installation. For recommended vehicle models, refer to the *BOSS Snowplow Application Chart and Selection Guide*.
- Never disable, remove, or relocate any sensors or other components related to the operation of the air bags.
- To comply with federal regulations and to assure a safe vehicle, do not exceed the front gross-axle-weight rating (FGAWR), rear gross-axle-weight rating (RGAWR), and the gross-vehicle-weight rating (GVWR) at any time.
- Due to the variety of equipment that you can install on the vehicle and undercarriage, do not exceed the front gross-axle-weight rating (FGAWR), rear gross-axle-weight rating (RGAWR), and the gross-vehicle-weight rating (GVWR) at any time. This may require weighing the vehicle and adding ballast as necessary. It may also limit the payload capacity of the vehicle.

## Installation

**Note:** Determine the left and right sides of the machine from the normal operating position.

1. Park the machine on a level surface, shut off the engine, wait for all moving parts to stop, engage the parking brake, and remove the key.
2. Remove the front fascia, skid plate, and tow hooks, if equipped.

**Note:** You may need to cut into the bumper to install this kit.

3. Temporarily install the right and left pushbeam supports to the frame rail using the tow hook fasteners.
4. Mark the holes on the outside of the frame rails and remove the pushbeam supports.

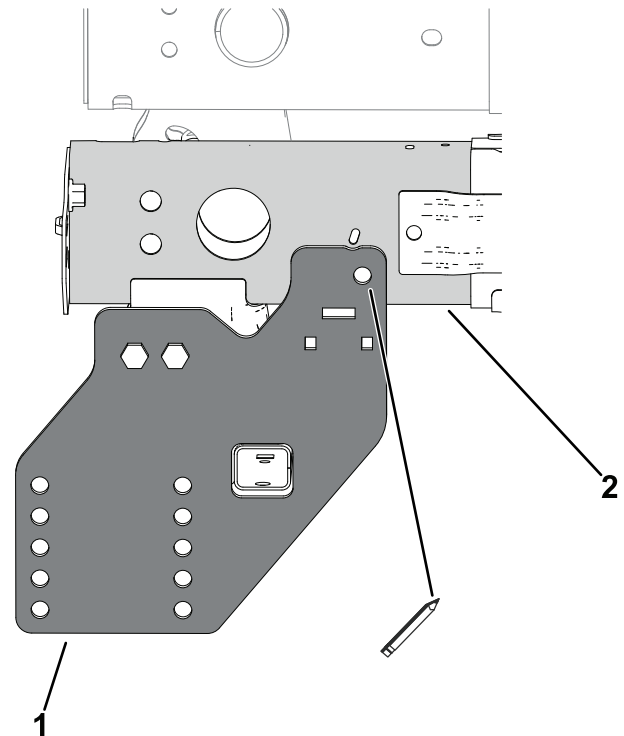


Figure 1

Left side of the machine shown

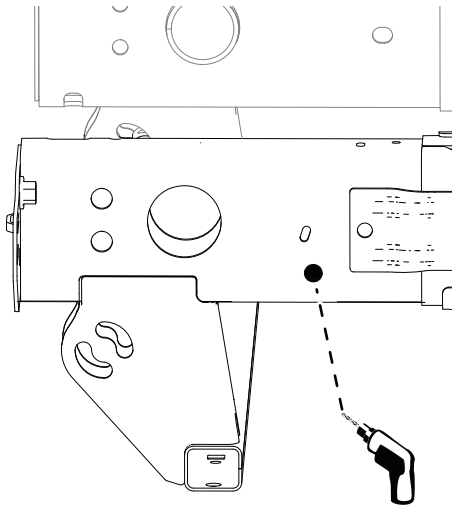
1. Pushbeam support
2. Frame rail

**⚠ WARNING**

Using a drill without proper eye protection may allow debris to enter the eye, causing injury.

When drilling, always wear eye protection.

- Using a drill bit (9/16 inch), drill the 2 previously marked hole locations.



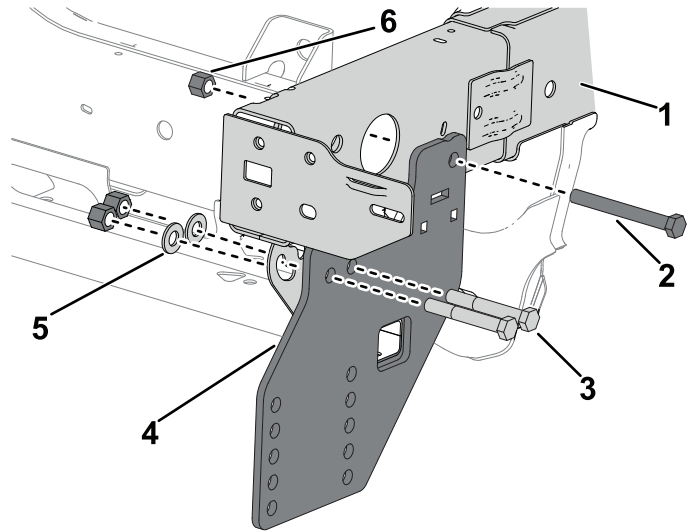
**Figure 2**

Left side of the machine shown

g467090

- On each side of the machine, install the 2 pushbeam supports using the fasteners shown below.

**Note:** Loosely install the fasteners.



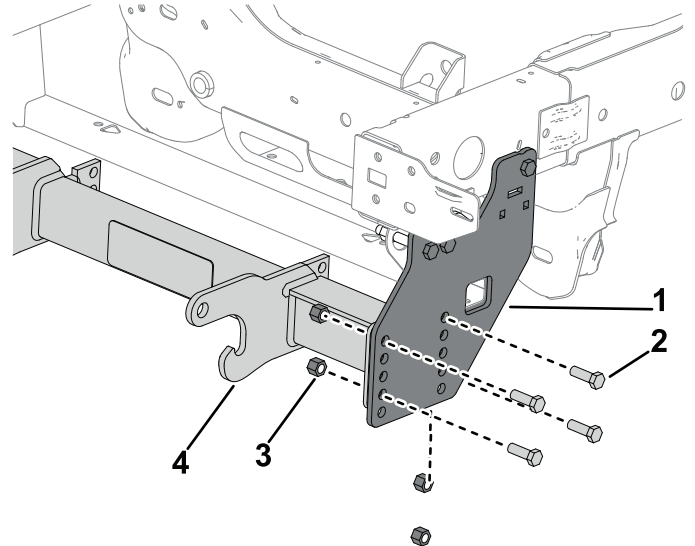
g467091

**Figure 3**

Left side of the machine shown

- |                              |                     |
|------------------------------|---------------------|
| 1. Frame rail                | 4. Pushbeam support |
| 2. Bolt (1/2 x 4-1/2 inches) | 5. Flat washer      |
| 3. Bolt (1/2 x 3-1/2 inches) | 6. Nut (1/2 inch)   |

- On each side of the machine, loosely install the pushbeam to the pushbeam support using the 4 bolts (1/2 x 1-1/2 inches) and 4 nuts (1/2 inch).



g467092

**Figure 4**

Left side of the machine shown

- |                              |                   |
|------------------------------|-------------------|
| 1. Pushbeam support          | 3. Nut (1/2 inch) |
| 2. Bolt (1/2 x 1-1/2 inches) | 4. Pushbeam       |

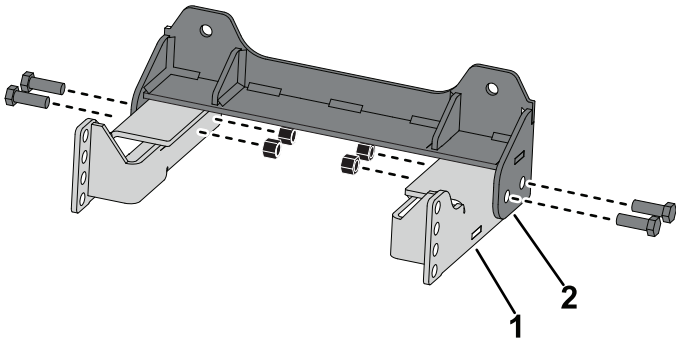
**Note:** Refer to the Recommended Pushbeam Height table below.

### Recommended Pushbeam Height

Plow Type	Recommended Pushbeam Height
Rear Mounted Plow	48 cm (19 inches)
UTV	44-1/2 cm (17-1/2 inches)
Heavy Duty	15 cm (16-1/2 inches)
Standard Duty	39 cm (15-1/2 inches)
HTX/Sport Duty	37 cm (14-1/2 inches)

- Install the 2 angle bracket to the skid-plate bracket using 4 bolts (1/2 x 1-1/2 inches) and 4 nuts (1/2 inch).

**Note:** The nuts go on the inside of the angle brackets.

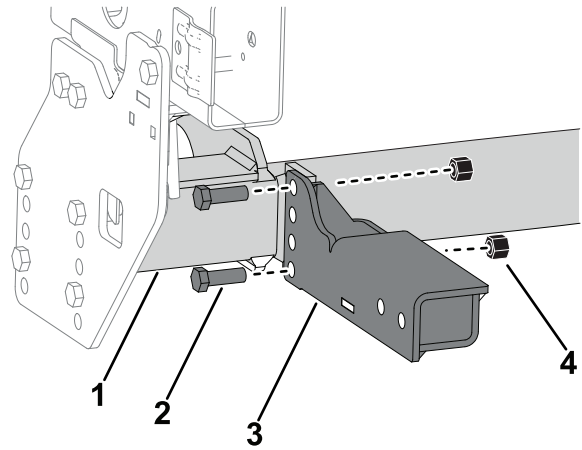


**Figure 5**

g467145

- Angle bracket
- Skid-plate bracket

- Temporarily install the angle brackets to the pushbeam using the 4 bolts (1/2 x 1-1/2 inches) and 4 nuts (1/2 inch).



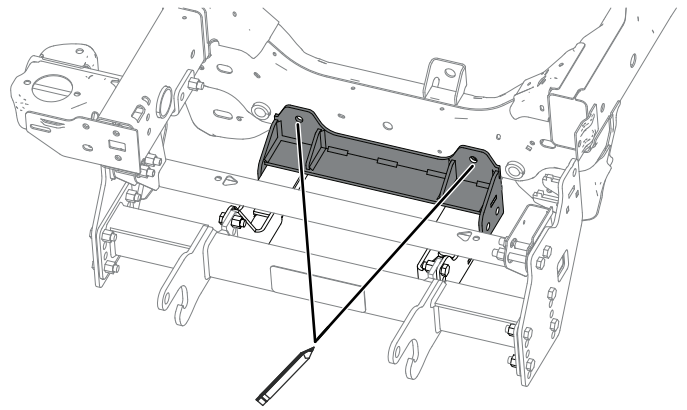
**Figure 6**

g467129

Left side of the machine shown

- Pushbeam
- Bolt (1/2 x 1-1/2 inches)
- Angle bracket
- Nut (1/2 inch)

- Mark the frame as shown below.

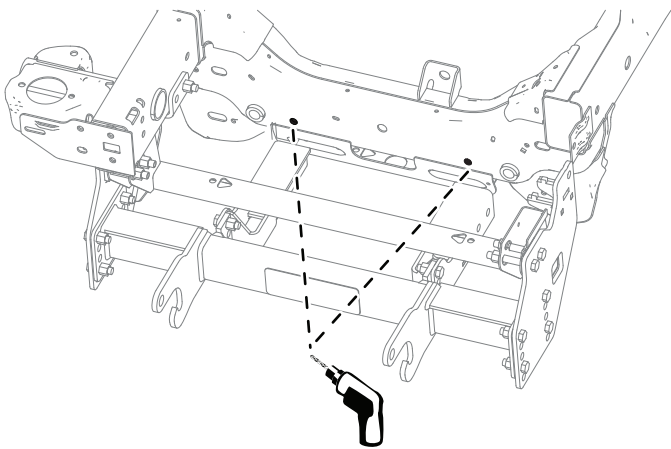


**Figure 7**

g467141

- Remove the angle brackets from the machine.

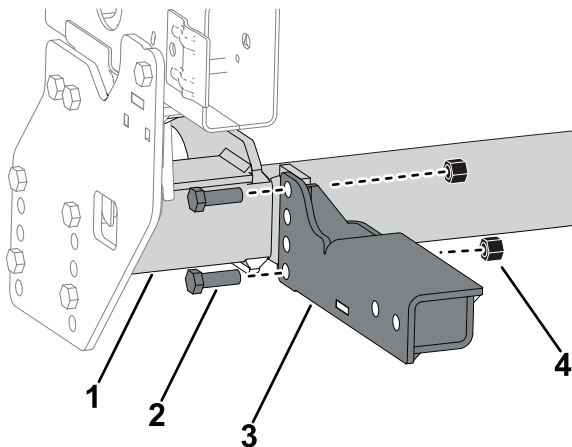
- Using a drill bit (9/16 inch), drill the 2 previously marked hole locations.



**Figure 8**

g467143

- Loosely install the angle brackets to the pushbeam using the 4 bolts (1/2 x 1-1/2 inches) and 4 nuts (1/2 inch).



**Figure 9**

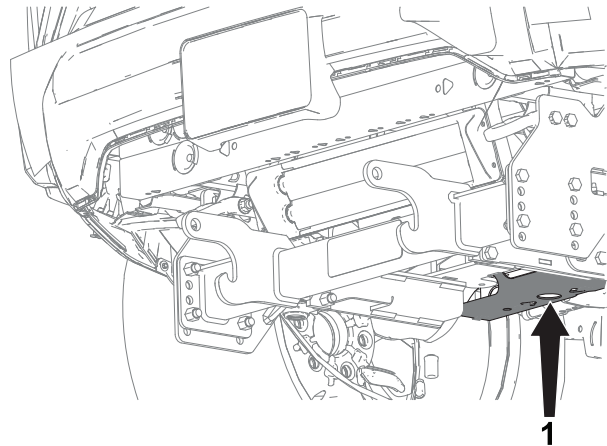
Left side of the machine shown

- |                              |                   |
|------------------------------|-------------------|
| 1. Pushbeam                  | 3. Angle bracket  |
| 2. Bolt (1/2 x 1-1/2 inches) | 4. Nut (1/2 inch) |

g467129

- Loosely secure the skid-plate bracket to the main frame using the 2 bolts (1/2 x 1-1/2 inches), 4 split washers, and 2 fin nuts (1/2 inch).

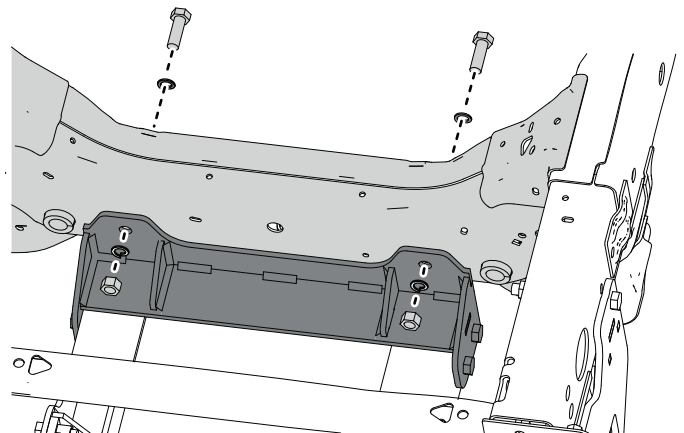
**Note:** To place the bolts and split washers inside the vehicle frame, slide a split washer onto the bolt, then thread the bolt onto the bolt puller. Route the bolt puller through the cross-member hole and then the bolt mounting hole. Carefully remove the bolt and washer and secure it with a nut. Repeat with the remaining bolt.



**Figure 10**

g467147

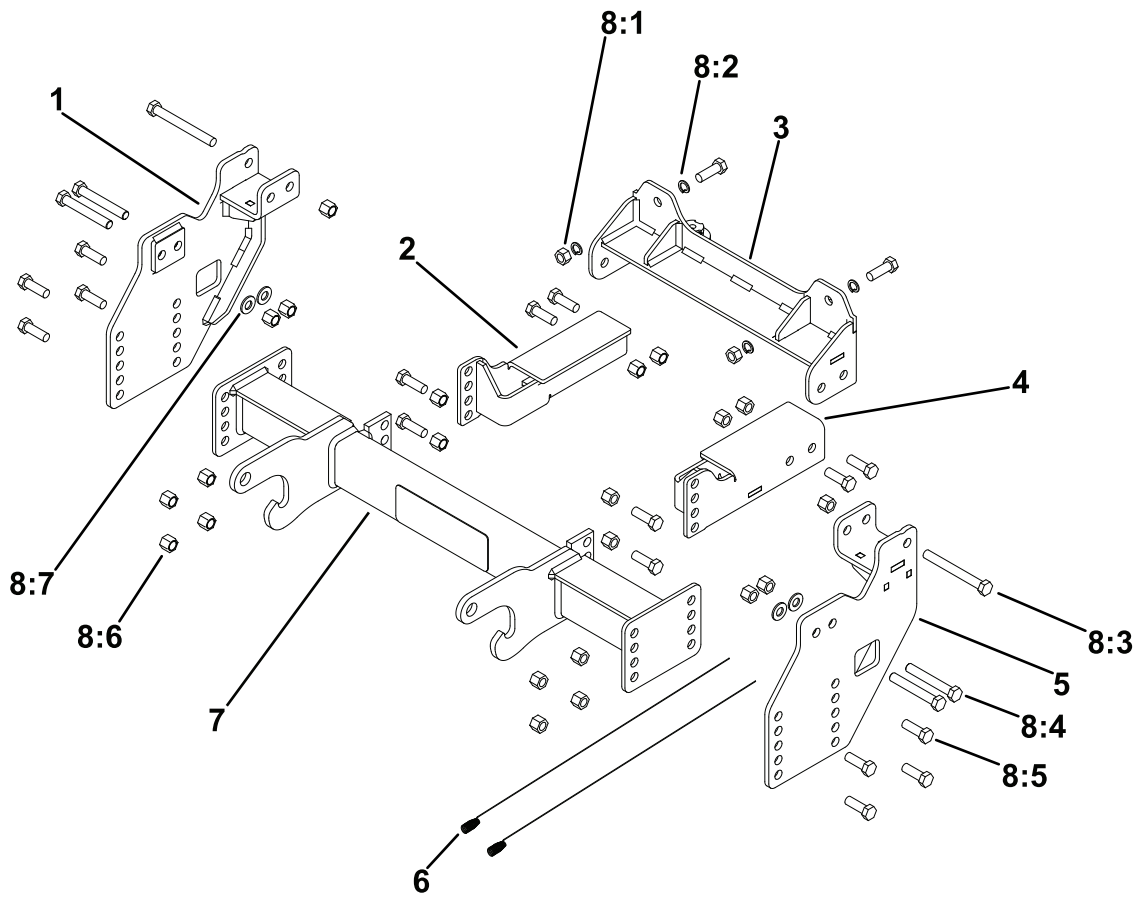
- Cross-member hole location



**Figure 11**

g467148

- Torque all of the fasteners to 76 N·m (56 ft-lb)
- Install the front fascia, skid plate, and tow hooks, if equipped.



**Parts**

g467019

Ref.	Part Number	Qty.	Description	Ref.	Part Number	Qty.	Description
1	PBA28451-03	1	PBSP ASM, PS, '23+	8:1	HDW02410	2	NUT,1/2-13
2	LTA28459-03	1	WLDMNT, PS ANGLE BRKT,'23	8:2	HDW01732	4	WASHER,1/2,SPLIT LOCK,YZN
3	LTA28467-03	1	WLDMNT, SKID PLT BRKT,'23	8:3	HDW01778	2	HHCS,1/2-13X4-1/2
4	LTA28462-03	1	WLDMNT, DR ANGLE BRKT,'23	8:4	139-1446	4	SCREW-HH 1/2-13 X 3.50, GR 8, CZ
5	PBA28452-03	1	PBSP ASM, DS, '23+	8:5	HDW01728	18	HHCS,1/2-13X1-1/2,NC,GR5,YZ
6	MSC09670	2	BOLT PULLER,1/2-13	8:6	HDW01748	22	NUT,1/2-13,NYL INS,YZN
7	PBA28490-03	1	PUSHBEAM,SPORT,'23	8:7	HDW05501	4	WASHER-FLAT1/2 TYP A NAR, STL, CZ
8	HDW28440	1	KIT-FASTENER				

**Notes:**

**Notes:**

**BOSS**  
S N O W P L O W