

BOSS Products limited consumer warranty and BOSS Products commercial warranty policies are located at [www.BOSSPlow.com](http://www.BOSSPlow.com).

Patent [www.ttcopats.com](http://www.ttcopats.com).

## Safety

- Always follow the vehicle manufacturer's recommendations relating to system installation. For recommended vehicle models, refer to the *BOSS Snowplow Application Chart and Selection Guide*.
- Never disable, remove, or relocate any sensors or other components related to the operation of the air bags.
- To comply with federal regulations and to assure a safe vehicle, do not exceed the front gross-axle-weight rating (FGAWR), rear gross-axle-weight rating (RGAWR), and the gross-vehicle-weight rating (GVWR) at any time.
- Due to the variety of equipment that you can install on the vehicle and undercarriage, do not exceed the front gross-axle-weight rating (FGAWR), rear gross-axle-weight rating (RGAWR), and the gross-vehicle-weight rating (GVWR) at any time. This may require weighing the vehicle and adding ballast as necessary. It may also limit the payload capacity of the vehicle.

## Installation

Determine the left and right sides of the machine from the normal operating position.

1. Park the machine on a level surface, shut off the engine, wait for all moving parts to stop, engage the parking brake, and remove the key.
2. Remove the front fascia, skid plate, and tow hooks if equipped.

**Note:** You may need to cut into your bumper to install this kit.

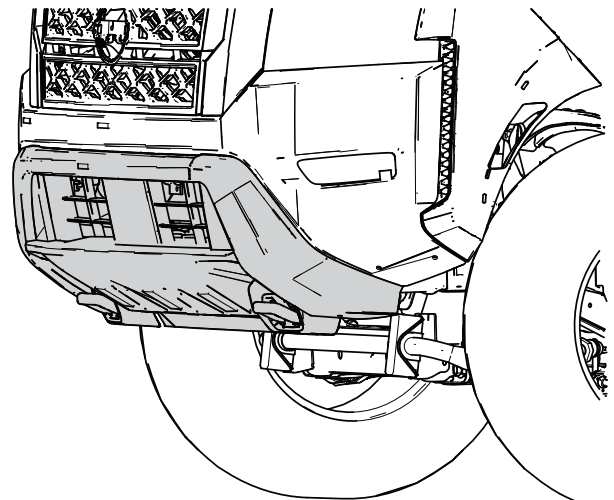
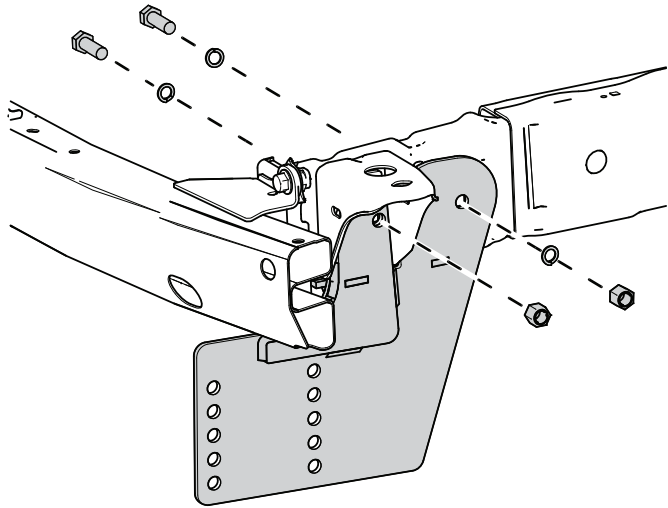


Figure 1



- Loosely secure the sideplates to the vehicle frame using 4 bolts, 6 split washers, and 4 nuts.

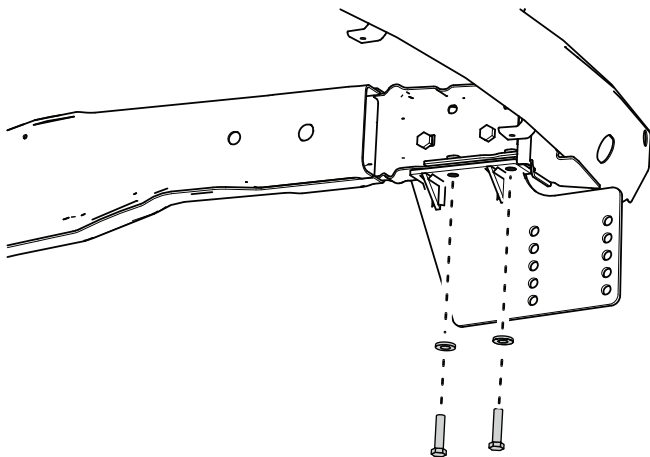
To place the bolts inside the vehicle frame, thread a bolt onto the bolt puller and pull the end of the bolt puller through the holes. Carefully remove the bolt, secure it with a nut, and repeat with the remaining bolts.



**Figure 2**

g391457

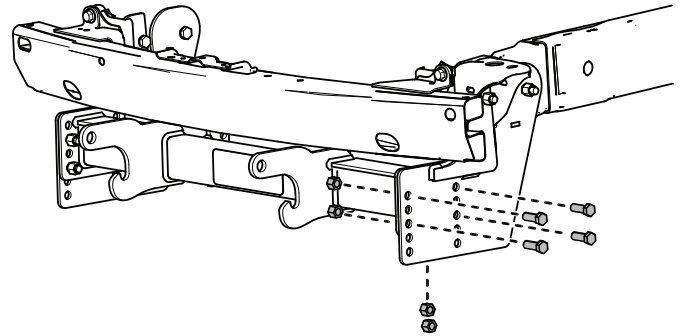
- Loosely secure the underside of the support plates to the vehicle frame with 4 bolts (M12), 4 flat washers, and 4 nuts. If you removed tow hooks, use the tow hook hardware to secure the underside of the support plates.



**Figure 3**

g391456

- Loosely secure the pushbeam assembly to the sideplates using 8 bolts and 8 nuts. Refer to the Recommended Pushbeam Height table below.



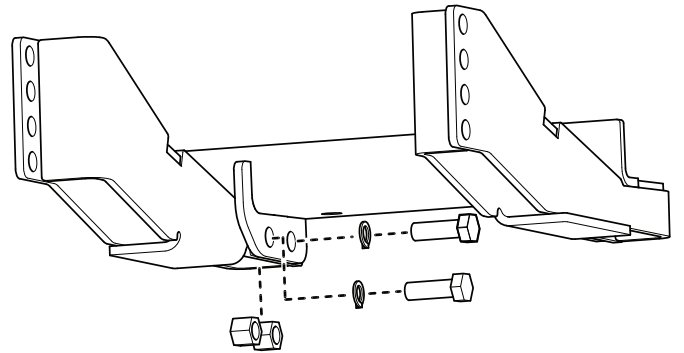
**Figure 4**

g391455

### Recommended Pushbeam Height

| Plow Type         | Recommended Pushbeam Height |
|-------------------|-----------------------------|
| Rear Mounted Plow | 48 cm (19 inches)           |
| UTV               | 44-1/2 cm (17-1/2 inches)   |
| Heavy Duty        | 15 cm (16-1/2 inches)       |
| Standard Duty     | 39 cm (15-1/2 inches)       |
| HTX/Sport Duty    | 37 cm (14-1/2 inches)       |

- Loosely secure the skid plates to the support arms using 4 bolts, 4 split washers, and 4 nuts.



**Figure 5**

g391459

7. Loosely secure the skid plate and support arm assembly to the pushbeam using 4 bolts and 4 nuts.

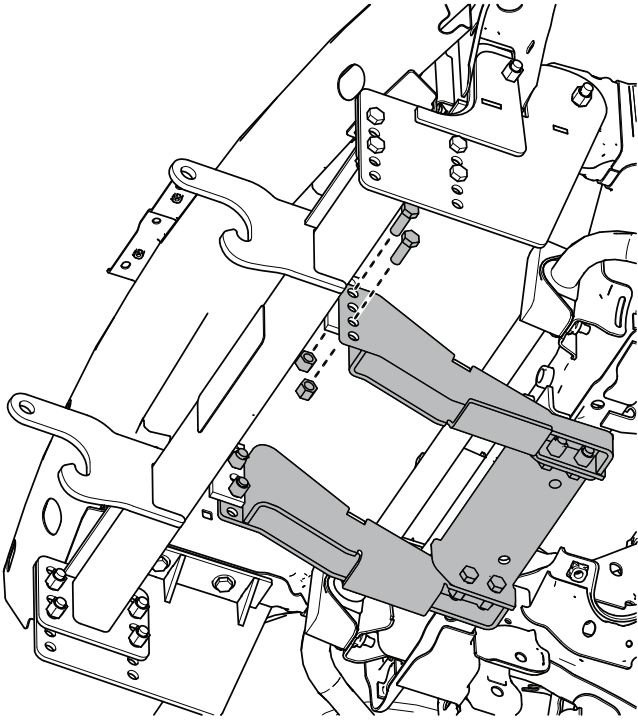


Figure 6

9. Loosely secure the rear of the skid plate to the vehicle frame using 2 bolts, 2 split washers, and 2 nuts.

To place the bolts and flat washers inside the vehicle frame, slide a split washer onto the bolt, then thread the bolt onto the bolt puller. Pull the end of the bolt puller through the holes. Carefully remove the bolt and washer and secure it with a nut. Repeat with the remaining bolt.

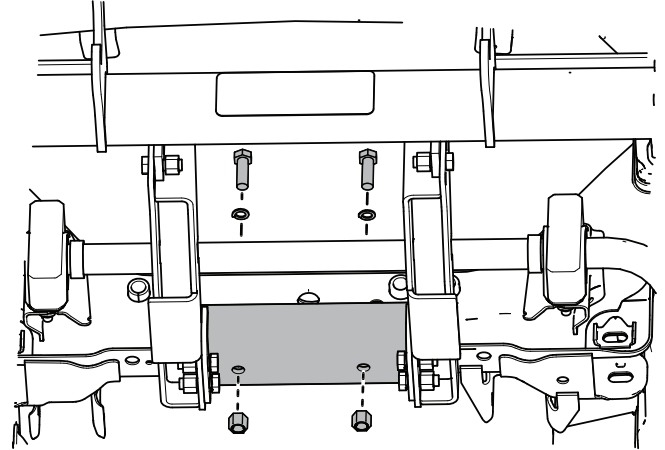


Figure 8

**⚠ WARNING**

Using a drill without proper eye protection may allow debris to enter the eye, causing injury.

When drilling, always wear eye protection.

8. Mark and drill 9/16 inch holes for the skidplate on the frame.

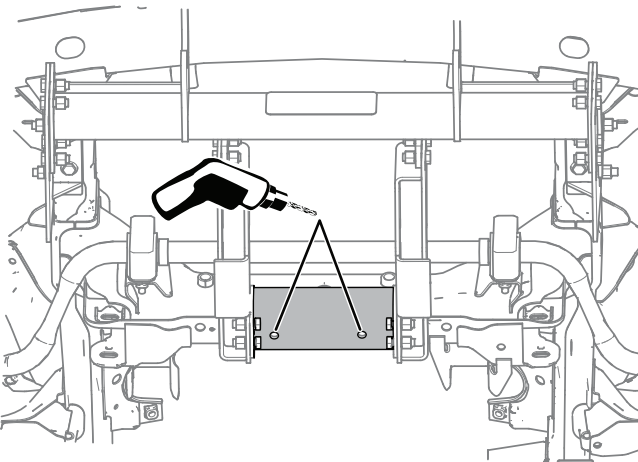
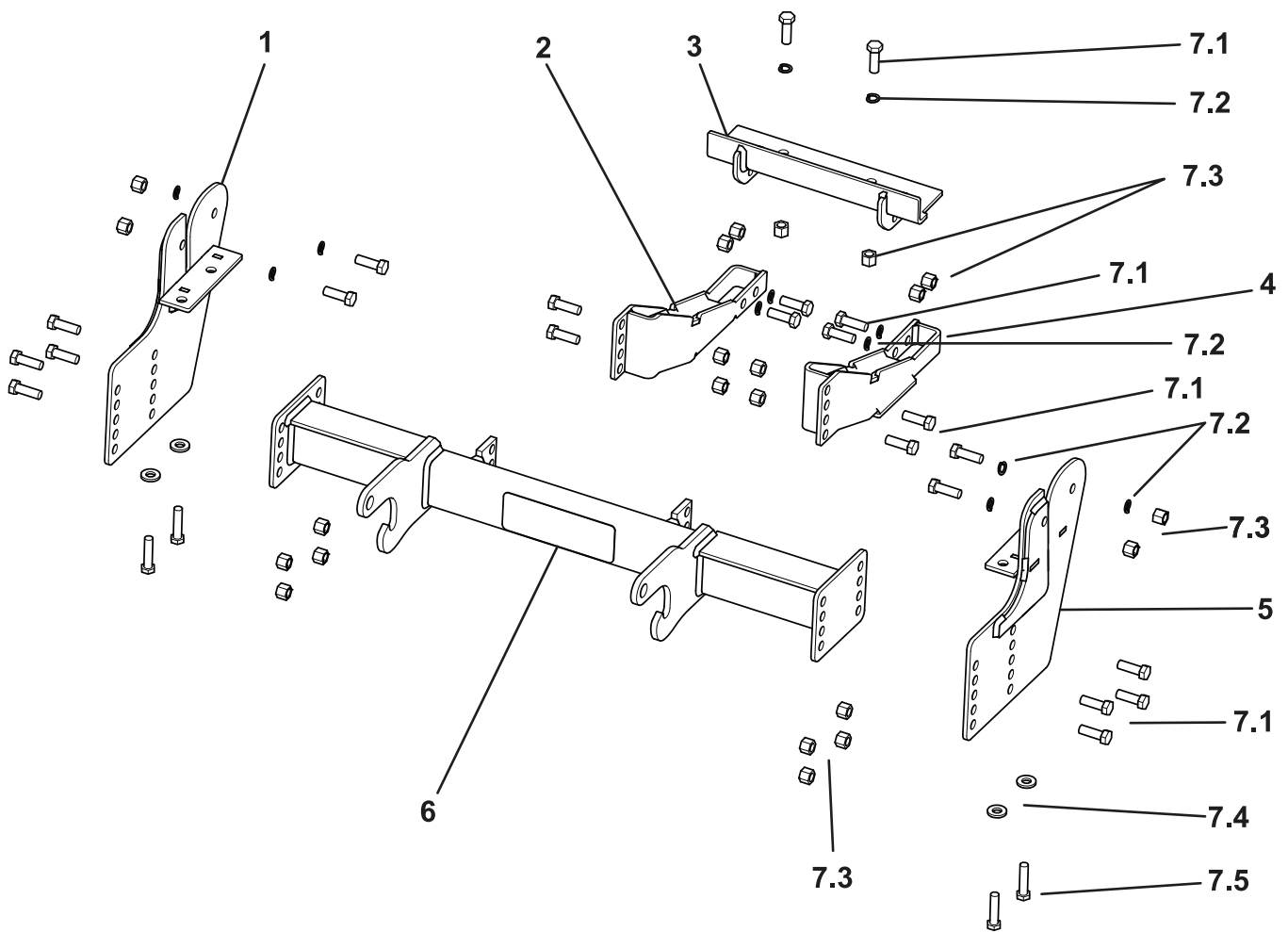


Figure 7

10. Torque all the fasteners to:
  - M12: 96 N·m (71 ft-lb)
  - 1/2 inch bolt: 76 N·m (56 ft-lb)
11. Install the previously removed front bumper and trim pieces.



g391463

**Parts**

| Ref. | Part Number | Qty. | Description                                 | Ref. | Part Number | Qty. | Description                           |
|------|-------------|------|---|------|-------------|------|---------------------------------------|
| 1    | PBA28620-03 | 1    | PUSH BEAM SUPPORT PLATE PASSENGER SIDE (RH) | 7    | HDW28680    | 1    | FASTENER KIT                          |
| 2    | LTA28660-03 | 1    | ANGLE ARM SUPPORT PASSENGER SIDE (RH)       | 7.1  | HDW01728    | 22   | 1/2" - 13 X 1-1/2" HEX HEAD BOLT GR 5 |
| 3    | LTA28670-03 | 1    | SKID PLATE                                  | 7.3  | HDW01748    | 22   | 1/2" - 13 HEX HEAD NYLON LOCK NUT     |
| 4    | LTA28650-03 | 1    | ANGLE ARM SUPPORT DRIVER SIDE (LH)          | 7.4  | HDW01729    | 4    | WASHER, FLAT, 1/2,                    |
| 5    | PBA28610-03 | 1    | PUSH BEAM SUPPORT PLATE DRIVER SIDE (LH)    | 7.2  | HDW01732    | 16   | WASHER, SPLIT LOCK, 1/2" YZN          |
| 6    | PBA06346-03 | 1    | PUSHBEAM                                    | 7.5  | HDW06351    | 4    | M12 HEX HEAD BOLT                     |