



Drag Pro Undercarriage for 2007 and After GM Trucks

Part No. RPL21870—Serial No. 40000000 and Up

Part No. RPL21870B—Serial No. 40000000 and Up

Form No. RPL22124 Rev E

Installation Instructions

BOSS Products limited consumer warranty and BOSS Products commercial warranty policies are located at www.BOSSPlow.com.

Patent www.tcopats.com.

Safety

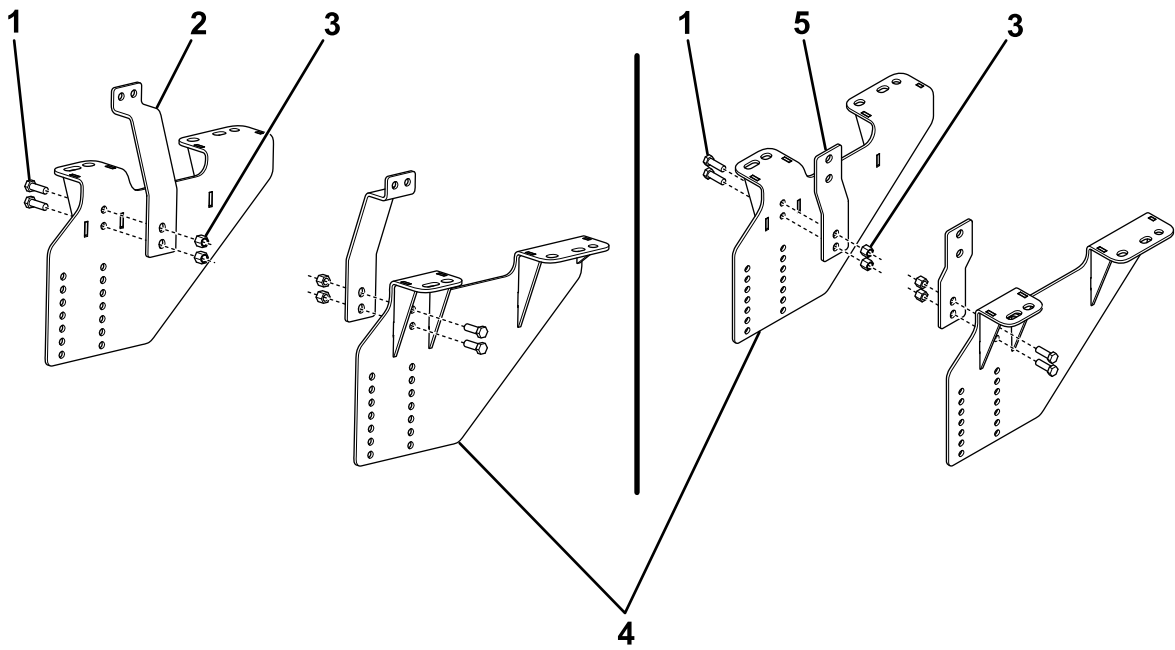
- Always follow the vehicle manufacturer's recommendations relating to system installation. For recommended vehicle models, refer to the *BOSS Snowplow Application Chart and Selection Guide*.
- Never disable, remove, or relocate any sensors or other components related to the operation of the air bags.
- To comply with federal regulations and to assure a safe vehicle, do not exceed the front gross-axle-weight rating (FGAWR), rear gross-axle-weight rating (RGAWR), and the gross-vehicle-weight rating (GVWR) at any time.
- Due to the variety of equipment that you can install on the vehicle and undercarriage, do not exceed the front gross-axle-weight rating (FGAWR), rear gross-axle-weight rating (RGAWR), and the gross-vehicle-weight rating (GVWR) at any time. This may require weighing the vehicle and adding ballast as necessary. It may also limit the payload capacity of the vehicle.
- Do not exceed the vehicle manufacturer's recommended towing capacity.

Installation

Determine the left and right sides of the machine from the normal operating position.

1. Park the machine on a level surface, shut off the engine, wait for all moving parts to stop, engage the parking brake, and remove the key.
 2. If your vehicle does not have an exhaust heat shield, continue to the next step. If your vehicle does have an exhaust heat shield, remove the spare tire and then remove the heat shield.
 3. Remove the spare tire.
 4. Remove the wire harness clips from the vehicle hitch.
 5. Remove the existing vehicle hitch and retain the hardware.
- Note:** You can remove the rear bumper to ease installation.
6. Loosely attach the sidestraps to the sideplates using 2 bolts (1/2 inch) and locknuts ([Figure 1](#)).





g274481

Figure 1

- | | |
|--|--|
| <ol style="list-style-type: none"> 1. Bolt (1/2 inch) 2. Sidestrap for 2007 through 2010 trucks 3. Locknut (1/2 inch) | <ol style="list-style-type: none"> 4. Sideplate 5. Sidestrap for 2011 and after trucks |
|--|--|

7. On the underside of the rear of the vehicle, loosely attach the undercarriage sideplates to the frame using the existing hardware.
8. Using the sideplates and sidestraps as a guide, mark and drill the holes on both sides as indicated for your vehicle below.

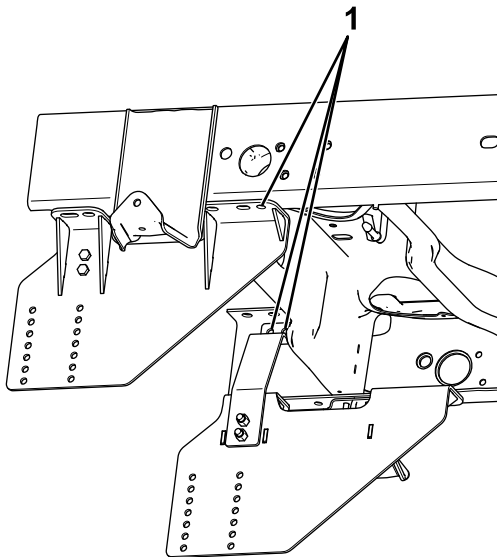


Figure 2

2007 through 2010 long box trucks

g274482

1. Drill

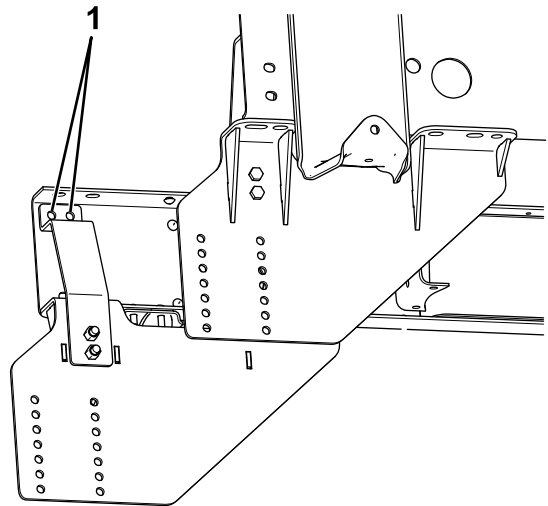


Figure 3

2007 through 2010 short box trucks

g274483

1. Drill

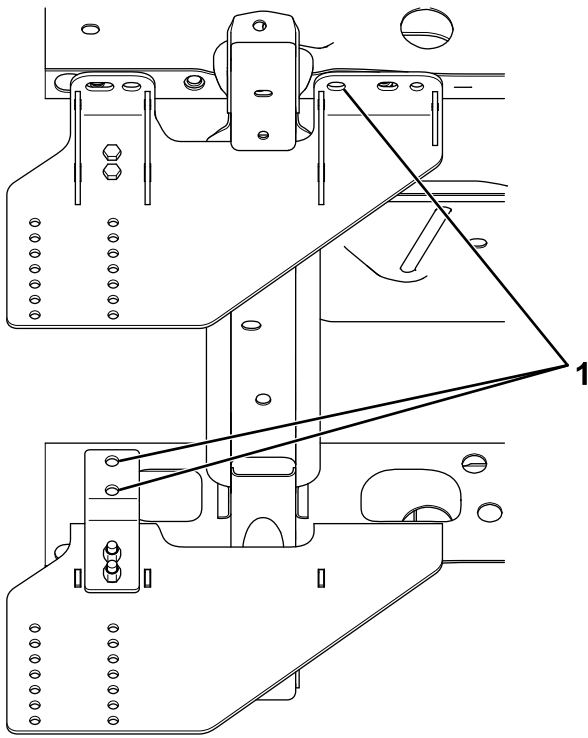


Figure 4

2011 and after long box trucks

g274484

1. Drill

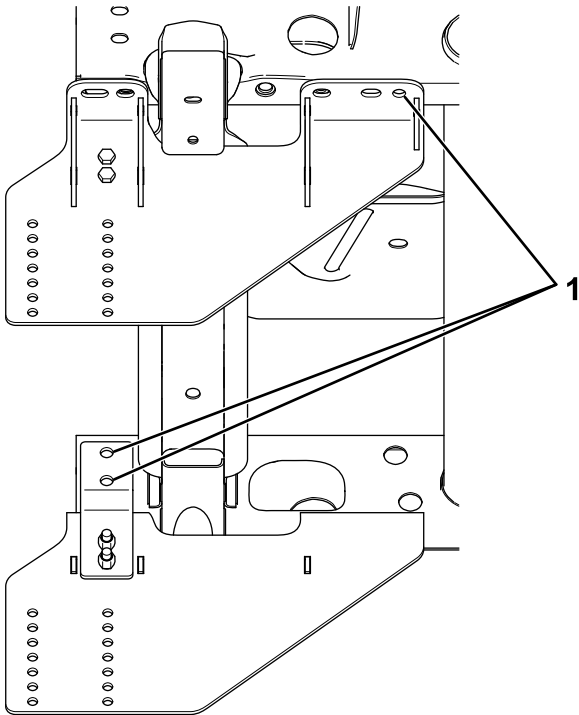


Figure 5

2011 and after short box trucks

g274485

1. Drill

9. Loosely attach the sideplates to the frame as shown below.

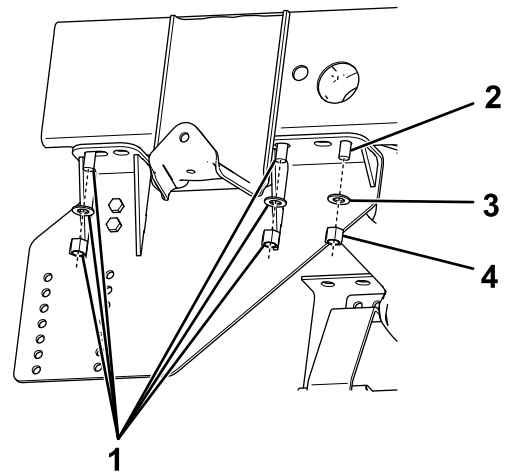


Figure 6

2007 through 2010 long box trucks

g274486

- | | |
|----------------------|-----------------------|
| 1. Existing hardware | 3. Washer (5/8 inch) |
| 2. Bolt (5/8 inch) | 4. Locknut (5/8 inch) |

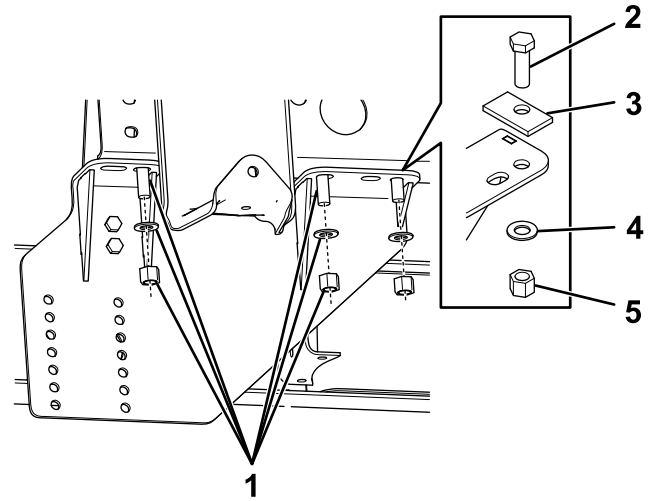
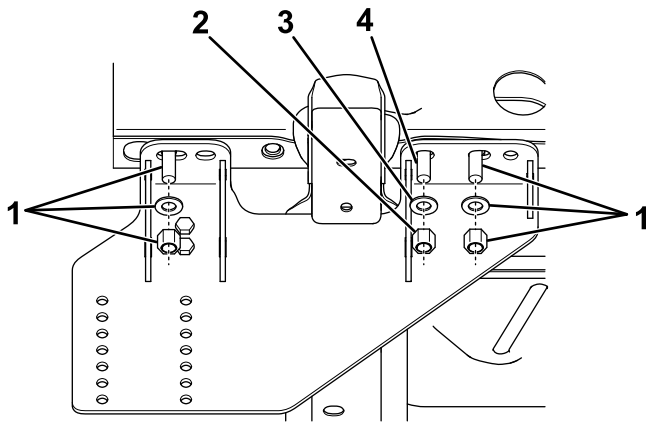


Figure 7

2007 through 2010 short box trucks

g274487

- | | |
|----------------------|-----------------------|
| 1. Existing hardware | 4. Washer (5/8 inch) |
| 2. Bolt (5/8 inch) | 5. Locknut (5/8 inch) |
| 3. Spacer | |

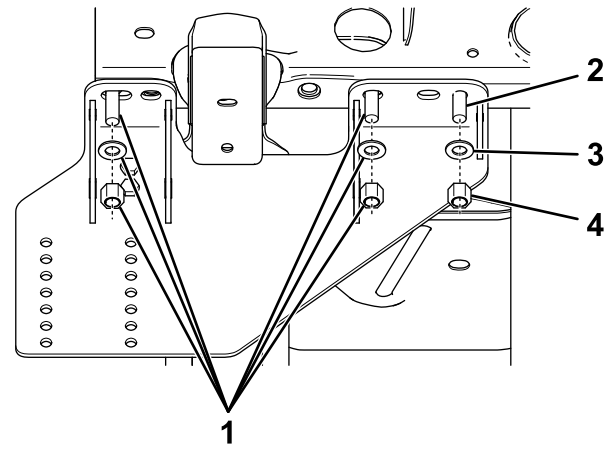


g274488

Figure 8

2011 and after long box trucks

- | | |
|-----------------------|----------------------|
| 1. Existing hardware | 3. Washer (5/8 inch) |
| 2. Locknut (5/8 inch) | 4. Bolt (5/8 inch) |



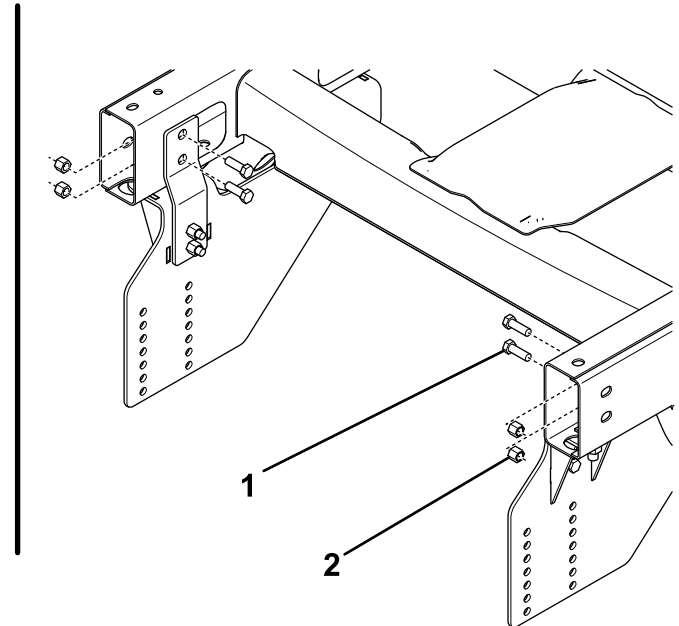
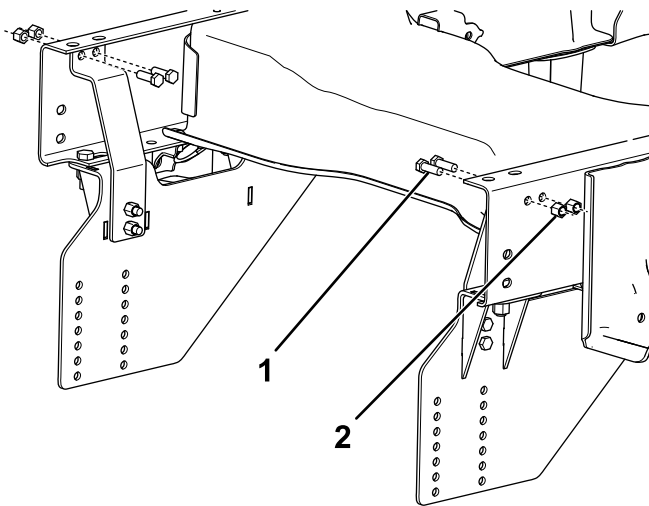
g274489

Figure 9

2011 and after short box trucks

- | | |
|----------------------|-----------------------|
| 1. Existing hardware | 3. Washer (5/8 inch) |
| 2. Bolt (5/8 inch) | 4. Locknut (5/8 inch) |

10. Loosely secure the top of the sideplates to the vehicle frame using 2 bolts (1/2 inch) and locknuts (Figure 10).



g274490

Figure 10

- | | |
|--------------------|-----------------------|
| 1. Bolt (1/2 inch) | 2. Locknut (1/2 inch) |
|--------------------|-----------------------|

11. Loosely attach the pushbeam to the sideplates using 8 bolts (1/2 inch) and locknuts (Figure 11).

Note: Refer to your plow *Owner's Manual* for the appropriate pushbeam height.

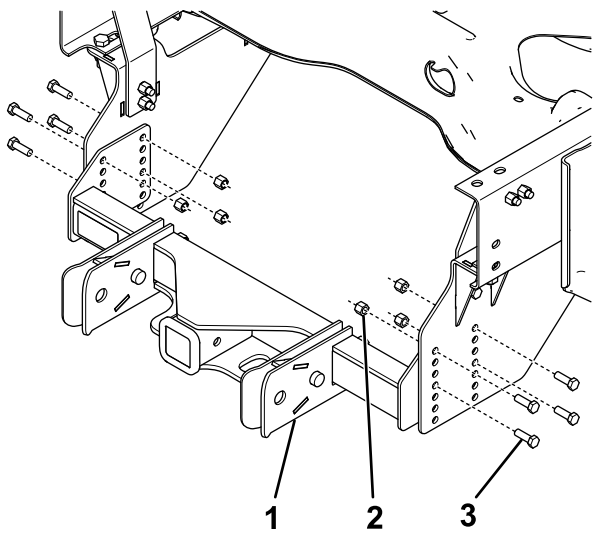


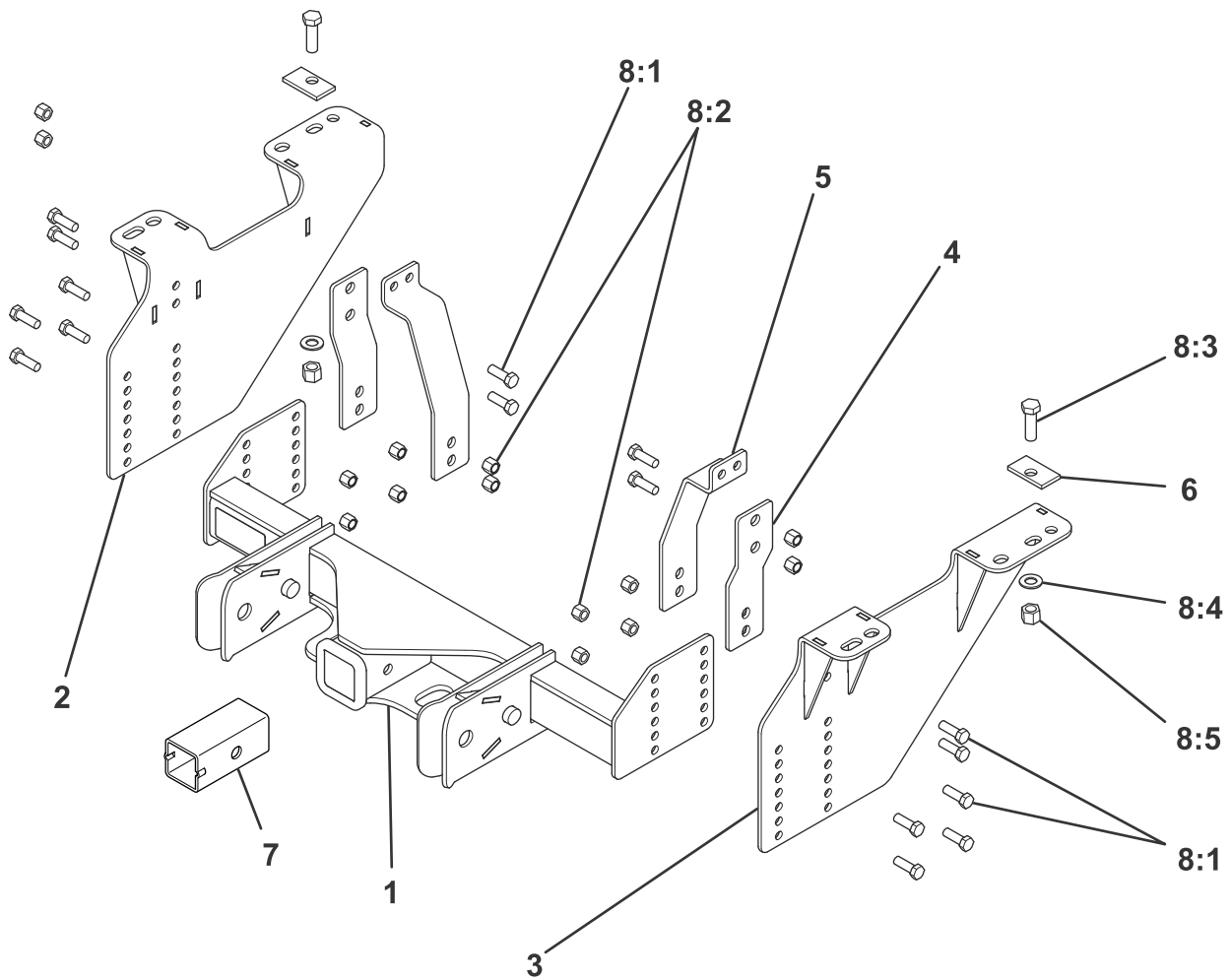
Figure 11

g274491

1. Pushbeam
2. Locknut (1/2 inch)
3. Bolt (1/2 inch)

-
12. Torque all the fasteners to the following specifications:
 - 5/8-inch bolts to 153 N·m (113 ft-lb)
 - 1/2-inch bolts to 76 N·m (56 ft-lb)

Note: Torque the existing bolts according to your vehicle manufacturer's recommendation.
 13. If your vehicle did not have an exhaust heat shield, continue to the next step. If you did remove an exhaust heat shield at the start of the installation, modify the heat shield to allow space for the undercarriage and install it.
 14. Install the previously removed spare tire
 15. Install the previously removed wire harness clips.
 16. Install the hitch reducer, if needed.



Parts

g296782

Ref.	Part Number	Qty.	Description	Ref.	Part Number	Qty.	Description
1	RPL21847	1	PB ASSY, FORD 17+/GM 07+, DRAG PRO	8:1	HDW01728	16	HHCS, 1/2-13 X 1-1/2, NC, GR5, YZN
2	RPL23012-03	1	SIDE PLATE WELDMENT, GM 10'-13' PS,UC,DR	8:2	HDW01748	16	NUT, 1/2-13, NYL INS, YZN
3	RPL23013-03	1	SIDE PLATE WELDMENT, GM 10'-13' DS,UC,DR	8:3	HDW01731	2	HHCS, 5/8-11 X 2, GR5, YZN
4	RPL21859-03	2	SIDESTRAP, GM 11+, DRAG PRO	8:4	HDW05619	2	NUT, 5/8-11, NYL INS, YZN
5	RPL21853-03	2	SIDESTRAP, GM 07-10, DRAG PRO	8:5	HDW01726	2	WASHER, 5/8 FLAT HARDEN, YZN
6	TGS05919	2	SHIM, 1/4 PLT, 11/16 HOLE, TGS				
7	RPL21897	1	REDUCER SLEEVE, 2-1/2" TO 2", DRAG PRO				
8	HDW21684	1	KIT-HARDWARE, UC, FORD/GM, DRAG PRO				

Notes:

BOSS
S N O W P L O W