

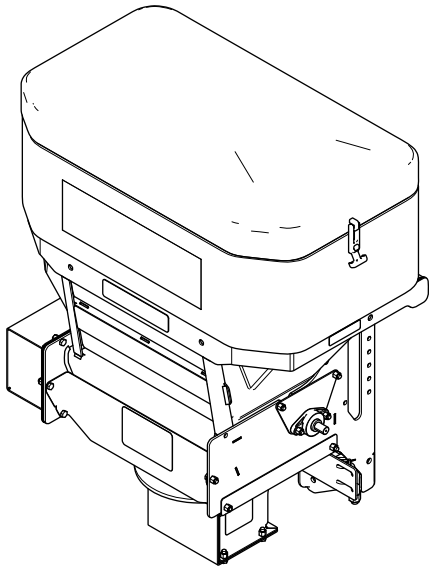


P.O. Box 787  
Iron Mountain, MI 49801  
United States

# Owner's Manual

## TGS 800 Tailgate Spreader

Part No. TGS08000



This product complies with all relevant European directives; for details, please see the separate product specific Declaration of Conformity (DOC) sheet.

**⚠ WARNING**

**CALIFORNIA  
Proposition 65 Warning**

**This product contains a chemical or chemicals known to the State of California to cause cancer, birth defects, or reproductive harm.**

Patents Pending.

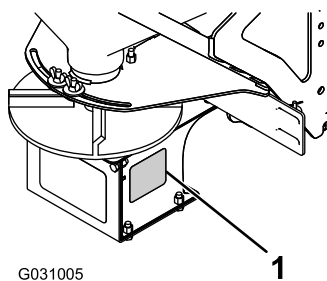
## Introduction

This tailgate spreader is designed to spread salt on icy or snowy surfaces.

Read this information carefully to learn how to operate and maintain your product properly and to avoid injury and product damage. You are responsible for operating the product properly and safely.

You may contact BOSS directly at [www.bossplov.com](http://www.bossplov.com) for product and accessory information, help finding a dealer, or to register your product.

Whenever you need service, genuine BOSS parts, or additional information, contact an Authorized Service Dealer or BOSS Customer Service and have the model and serial numbers of your product ready. [Figure 1](#) identifies the location of the model and serial numbers on the product. Write the numbers in the space provided.



**Figure 1**

1. Serial number location

**Model No.** \_\_\_\_\_

**Serial No.** \_\_\_\_\_

This manual identifies potential hazards and has safety messages identified by the safety alert symbol ([Figure 2](#)),

which signals a hazard that may cause serious injury or death if you do not follow the recommended precautions.



**Figure 2**

g000502

1. Safety alert symbol

This manual uses 2 words to highlight information. **Important** calls attention to special mechanical information and **Note** emphasizes general information worthy of special attention.

## Contents

Safety .....	3
Preparation.....	3
Operation.....	3
Safety and Instructional Decals .....	4
Setup .....	6
Installing the Wire Harness .....	6
Installing the Slide-In Attachment.....	6
Mounting the Spreader with the Slide-In Attachment.....	6
Installing the RT3 Attachment .....	7
Mounting the Spreader with the RT3 Attachment.....	8
Installing the Spreader Controller .....	9
Product Overview .....	10
Controls .....	10
Specifications .....	10
Operation .....	11
Removing the Spreader .....	11
Mounting the Spreader.....	11
Removing the Spreader .....	12
Mounting the Spreader.....	12
Loading the Spreader .....	13
Operating the Spreader .....	14
Freeing a Clog.....	14
Unloading the Spreader.....	14
Adjusting the Material Deflectors .....	15
Adjusting the Rubber Flaps.....	15
Adjusting the Spreader Vibration.....	16
Operating Tips .....	16
Troubleshooting .....	17

# Safety

Improperly using and maintaining the equipment can result in injury. To reduce the potential for injury, comply with these safety instructions and always pay attention to the safety-alert symbol **A**, which means: *Caution, Warning, or Danger*—personal safety instruction. Failure to comply with the instruction may result in personal injury or death.

## Preparation

- Ensure that only trained personnel install and perform maintenance on the equipment.
- Always wear appropriate personal protective equipment when loading, unloading, and servicing the spreader. Wear substantial, slip-resistant footwear, cold-weather clothing, safety glasses, and dust protection.
- Ensure that your rearview mirror is in a good operating position.
- Many trucks are equipped with air bags. **Never** disable, remove, or relocate any sensors or other components related to the operation of the air bags.
- TGS 800 spreaders with slide-in or RT3 attachments must only be used with a minimum Class IV receiver hitch. **Do not** exceed the vehicle hitch rating.
- The TGS 800 can hold a maximum weight of 362 kg (800 lb) of salt. **Do not** exceed this weight.

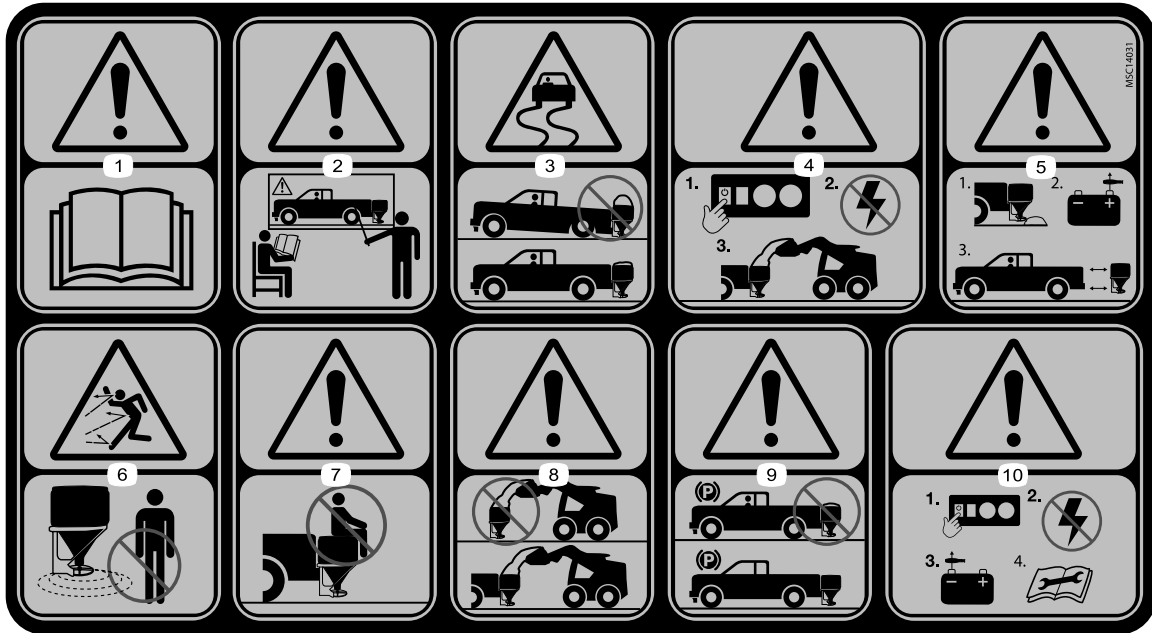
# Operation

- Read the *Operator's Manual* before operating or servicing the spreader.
- Do not operate the machine while ill, tired, or under the influence of alcohol or drugs.
- For vehicle-mounted spreaders, always follow the manufacturer's recommendations for proper parking procedures.
- Always wear your seatbelt while operating a motor vehicle.
- Do not exceed 22.5 km/h (14 mph) while spreading.
- This spreader has an operating sound level below 70 dBA.
- **Never** put any part of your body between the spreader and the vehicle.
- Overloading the spreader could result in an accident or damage. **Never** exceed the gross-vehicle-weight rating or the front or rear gross-axle-weight ratings for the vehicle.
- This spreader is restricted to the use of sand, salt, or a sand/salt mix only. **Do not** run other materials through the spreader.
- **Do not** attempt to mount or remove the spreader with material in it.
- Turn the spreader off before filling, mounting, removing, servicing, or cleaning it.
- **Never** operate the spreader within 7.6 m (25 ft) of bystanders.
- **Do not** climb into or ride on the spreader.
- Keep your hands, feet, and clothing away from moving parts and mounting points.
- Mount the spreader to a vehicle before loading material.
- Install ratchet straps and keep them properly tightened with the slide-in and RT3 Attachments.
- When transporting the spreader, ensure that it is properly secured. Instructions are available at [www.bossplow.com](http://www.bossplow.com).
- The slide-in attachment must be fully engaged and pinned into the vehicle's 5 cm (2 inch) receiver hitch.
- The upper and lower pins of the RT3 attachment must be fully engaged and pinned into the vehicle's 5 cm (2 inch) receiver hitch.
- Material safety data sheets (MSDS) are available at [www.bossplow.com](http://www.bossplow.com).
- Use a 1/2 ton minimum lifting device to move heavy spreader components.
- **Do not** store material in the hopper.

# Safety and Instructional Decals



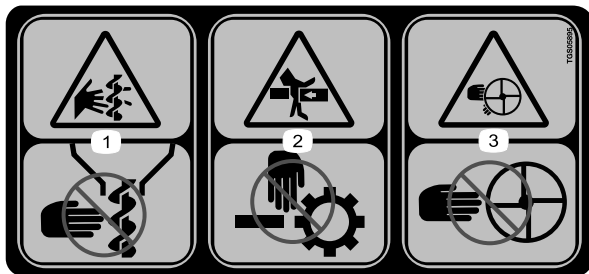
Safety decals and instructions are easily visible to the operator and are located near any area of potential danger. Replace any decal that is damaged or missing.



**TGS06269**

decalgs06269b

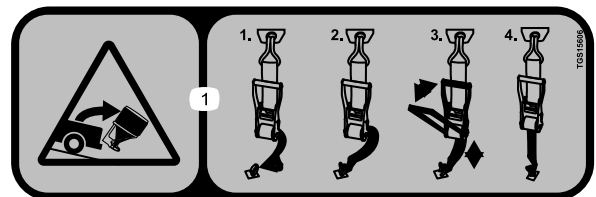
1. Warning—read the *Owner's Manual*.
2. Warning—all operators should be trained before operating the machine.
3. Loss of control hazard—do not overfill the machine.
4. Warning—turn the machine off before filling.
5. Warning—empty the hopper and disconnect the power before installing or removing the machine.
6. Thrown object hazard—keep bystanders a safe distance from the machine.
7. Warning—do not stand or ride on the machine.
8. Warning—the machine must be installed before filling.
9. Warning—do not store materials in the machine.
10. Warning—turn the machine off and disconnect the power before servicing the machine.



**TGS05895**

decalgs05895b

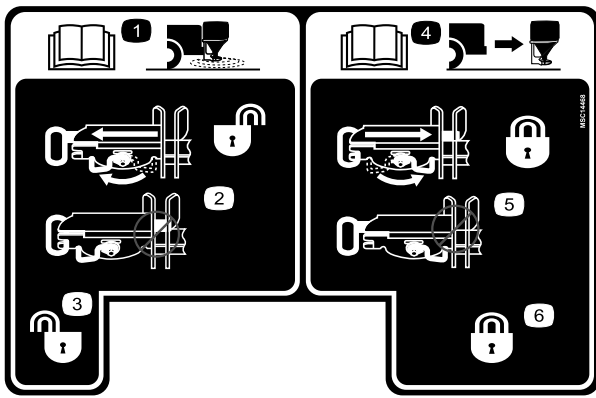
1. Cutting/dismemberment hazard; auger—keep fingers and hands clear of the auger.
2. Crushing hazard—keep fingers and hands clear of moving parts.
3. Cutting/dismemberment hazard; spinner—keep fingers and hands clear of the spinner.



**TGS15606**

decalgs15606

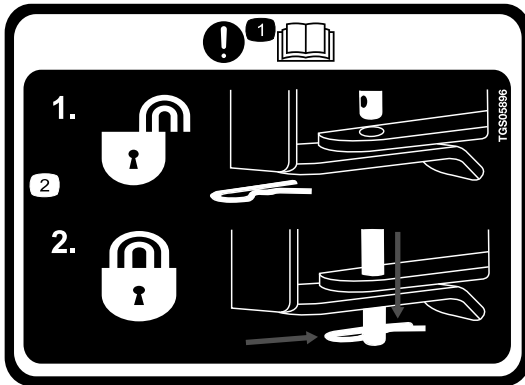
1. Loss of machine hazard—the ratchet straps must be secured at all times.



decalmsc14468

**MSC14468**

- |  |   |
|--|---|
| 1. Read the <i>Owner's Manual</i> for information on attaching the spreader. | 4. Read the <i>Owner's Manual</i> for information on removing the spreader. |
| 2. Coupler spring pin unlock   | 5. Coupler spring pin lock  |
| 3. Coupler spring pin unlock position  | 6. Coupler spring pin lock position   |



decaltgs05896

**TGS05896**

- |   |   |
|---|---|
| 1. Important—read the <i>Owner's Manual</i> . | 2. The lock pin must be fully engaged before using the machine. |
|---|---|

# Setup

**Note:** Either the slide-in or RT3 attachment is required to install this machine. Contact your Authorized BOSS Dealer for more information.

## Installing the Wire Harness

### ⚠ DANGER

Vehicle engines contain moving parts and can become extremely hot, capable of causing severe burns and serious bodily harm.

Shut off the engine and allow it sufficient time to cool down before installing this kit.

### ⚠ DANGER

Vehicle batteries can cause dangerous electrical shocks that could lead to severe burns or death.

Disconnect your battery before installing this kit.

1. Secure the spreader end of the vehicle wire harness (Figure 3) to the center of the rear vehicle bumper with a cable tie.
2. Route the wire harness along the driver-side frame-rail and into the engine compartment, and secure it with cable ties.

**Note:** Keep the wire harness away from any hot or moving parts.

3. Insert the controller connectors through the firewall and into the vehicle cab, and secure them with cable ties.

**Note:** Route the connectors to the location that you want to install your controller.

4. Connect the black ring connector to the negative (-) battery terminal (Figure 3).
5. Connect the red ring connector to the positive (+) battery terminal (Figure 3).
6. Wrap all of the excess wire and secure it in the engine compartment with cable ties.

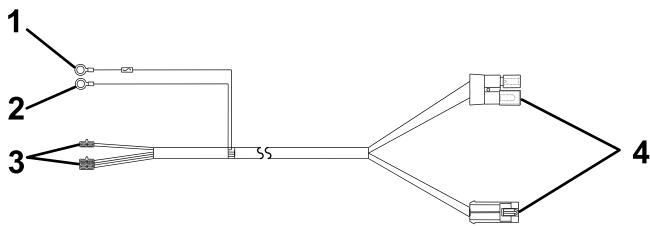


Figure 3

- |                         |                         |
|-------------------------|-------------------------|
| 1. Red ring connector   | 3. Controller connector |
| 2. Black ring connector | 4. Spreader connector   |

## Installing the Slide-In Attachment

1. Mount the slide-in attachment to the spreader using 4 bolts (1/2 inch) and locknuts (1/2 inch) and torque the bolts to 76 Nm (56 ft-lb) as shown in Figure 4.

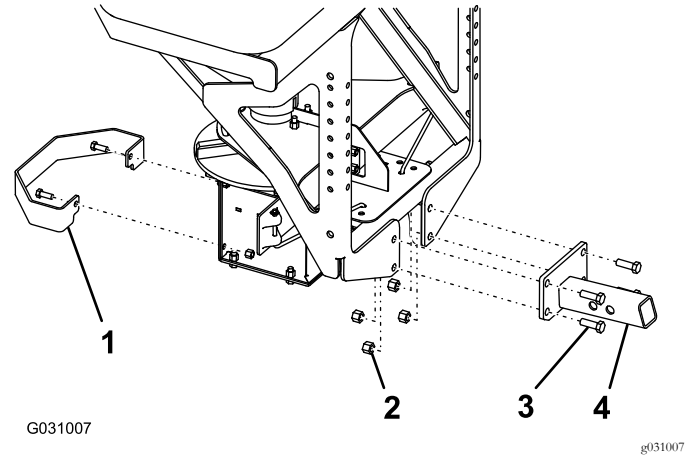


Figure 4

- |                       |                        |
|-----------------------|------------------------|
| 1. Spinner guard      | 3. Bolt (1/2 inch)     |
| 2. Locknut (1/2 inch) | 4. Slide-in attachment |

2. Mount the spinner guard to the spreader using the 2 existing bolts (3/8 inch) and locknuts (3/8 inch) and torque the bolts to 27 Nm (19.7 ft-lb) as shown in Figure 4.

## Mounting the Spreader with the Slide-In Attachment

1. Attach the D-ring end of the ratchet straps to the upper holes on the outside of the spreader frame using a bolt (1/2 inch), washer (1/2 inch), and locknut (1/2 inch) and torque the bolts to 76 Nm (56 ft-lb) as shown in Figure 5.

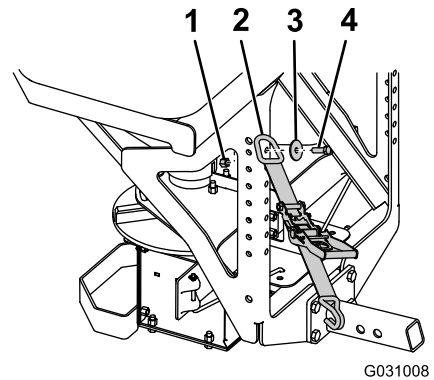


Figure 5

- |                       |                      |
|-----------------------|----------------------|
| 1. Locknut (1/2 inch) | 3. Washer (1/2 inch) |
| 2. Ratchet strap      | 4. Bolt (1/2 inch)   |

- Slide the hitch on the spreader into the receiver hitch of your vehicle and line up the second hole on the spreader hitch with the hole in the hitch of your vehicle (Figure 6).

**Note:** If the spreader contacts the bumper of your vehicle, slide the spreader out and align the first hole of the spreader hitch instead.

## ⚠ DANGER

The spreader is heavy and could cause serious injury if dropped.

Ensure that your footing is stable, and avoid lifting the spreader on slippery or uneven surfaces.

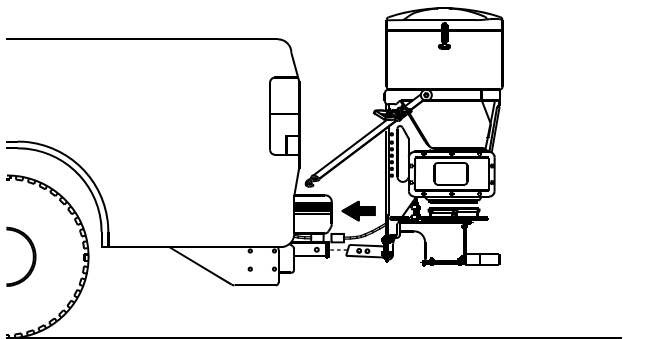


Figure 6

g186474

- Secure the spreader hitch to the vehicle hitch using the clevis pin and cotter hairpin.
- Attach the stabilizer arms to the spreader frame using 8 bolts (3/8 inch) and 8 locknuts (3/8 inch), and torque the bolts to 27 Nm (19.7 ft-lb) as shown in Figure 7.

**Note:** Attach the arms so that the stabilizer pads contact your truck bed.

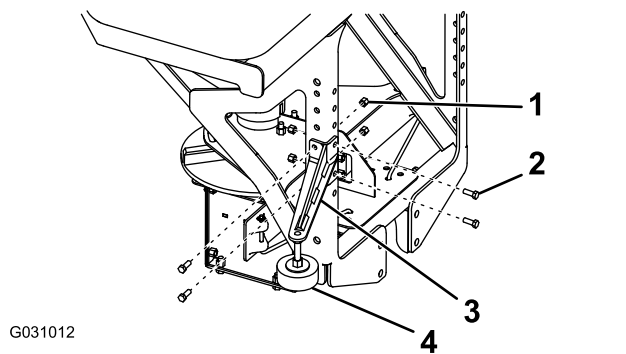


Figure 7

g031012

- Locknut (3/8 inch)
- Bolt (3/8 inch)
- Stabilizer arm
- Stabilizer pad

- Rotate the pads on the stabilizer arms until they are tight against your truck bed and tighten the jam nut to secure them (Figure 7).

- Slide the ends of the ratchet straps between the bumper and tailgate on your vehicle and attach them to a solid point on the truck frame rail.

**Note:** You may have to drill a hole in the truck frame rail to attach them.

- Plug the spreader harness into the vehicle wire harness at the bumper.

## Installing the RT3 Attachment

- Mount the RT3 attachment to the spreader using 4 bolts (1/2 inch) and locknuts (1/2 inch) and torque the bolts to 76 Nm (56 ft-lb) as shown in Figure 8.

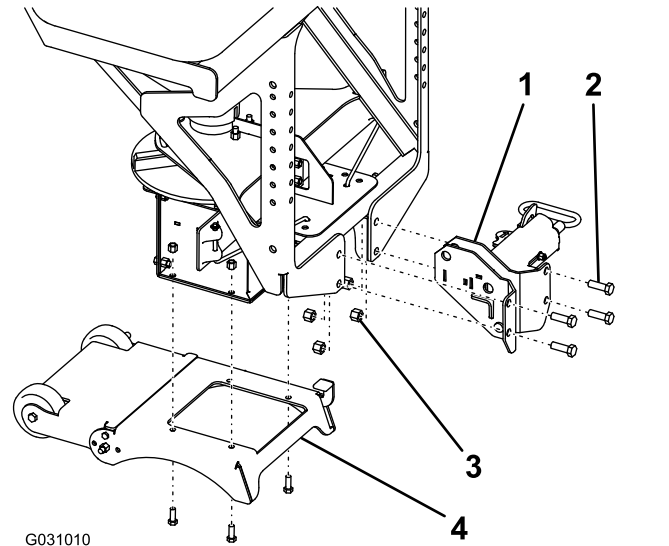


Figure 8

G031010

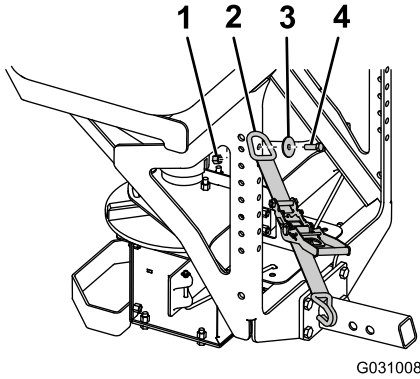
g031010

- RT3 attachment
- Bolt (1/2 inch)
- Locknut (1/2 inch)
- Leg assembly

- Mount the leg assembly to the spreader using the 4 existing bolts (3/8 inch) and locknuts (3/8 inch) and torque the bolts to 27 Nm (19.7 ft-lb) as shown in Figure 8.

# Mounting the Spreader with the RT3 Attachment

1. Attach the D-ring end of the ratchet straps to the upper holes on the outside of the spreader frame using a bolt (1/2 inch), washer (1/2 inch), and locknut (1/2 inch) and torque the bolts to 76 Nm (56 ft-lb) as shown in [Figure 9](#).

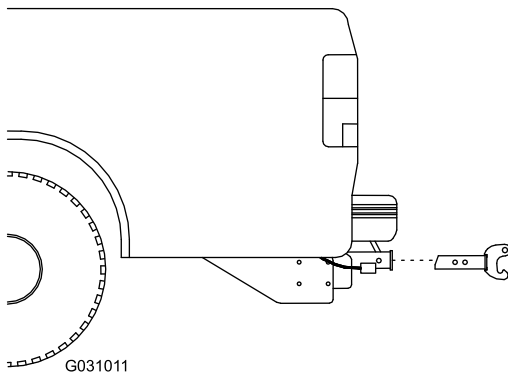


**Figure 9**

- |                       |                      |
|-----------------------|----------------------|
| 1. Locknut (1/2 inch) | 3. Washer (1/2 inch) |
| 2. Ratchet strap      | 4. Bolt (1/2 inch)   |

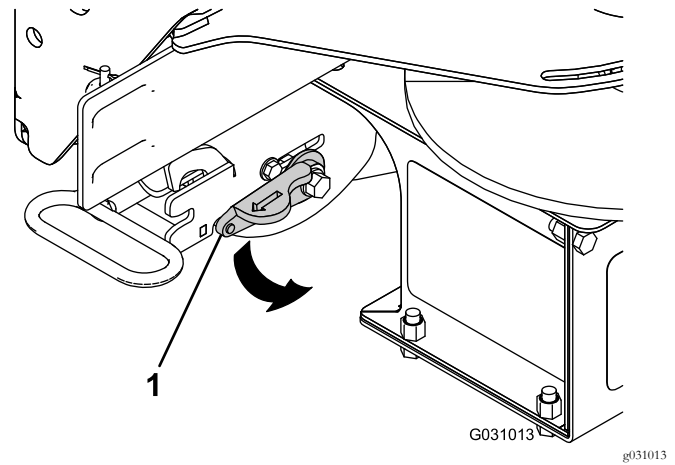
2. Slide the RT3 hitch into the receiver hitch of your vehicle and line up the second hole on the spreader hitch with the hole in the hitch of your vehicle ([Figure 10](#)).

**Note:** If the spreader contacts the bumper of your vehicle, slide the spreader out and align the first hole of the spreader hitch instead.



**Figure 10**

3. Secure the spreader hitch to the vehicle hitch using the clevis pin and cotter hairpin.
4. Rotate the locking lever on the RT3 attachment to the LOCK position ([Figure 11](#)).



**Figure 11**

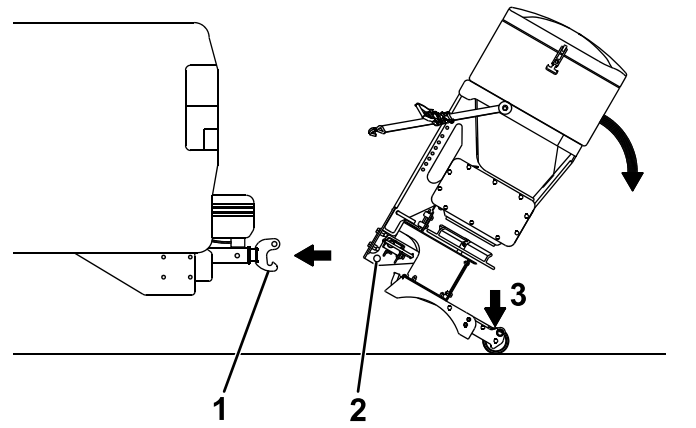
1. Locking lever

5. Grip the spreader firmly and step on the leg assembly to rotate it back until the bottom pin of the RT3 attachment clears the hook on the RT3 hitch ([Figure 12](#)).

**⚠ DANGER**

The spreader is heavy and could cause serious injury if dropped.

Ensure that your footing is stable, and avoid lifting the spreader on slippery or uneven surfaces.



**Figure 12**

- |                   |              |
|-------------------|--------------|
| 1. RT3 hitch hook | 3. Step here |
| 2. Bottom pin     |              |

6. Push the spreader forward and lower the bottom pin of the RT3 attachment onto the hitch hook.
7. Tip the spreader upright until the top pin of the RT3 attachment locks into place.



## **⚠ DANGER**

The spreader is heavy and could cause serious injury or property damage if it falls off your vehicle.

Ensure that the top pin of the RT3 attachment is fully locked into place and that the safety latch is down.

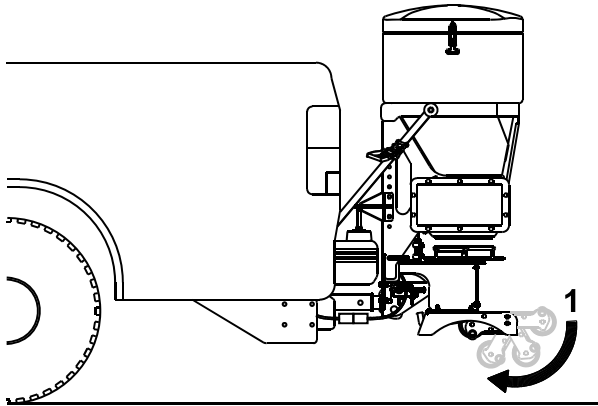
8. Attach the stabilizer arms to the spreader frame using 8 bolts (3/8 inch) and 8 locknuts (3/8 inch) and torque the bolts to 27 Nm (19.7 ft-lb) as shown in [Figure 7](#).

**Note:** Attach the arms so that the stabilizer pads contact your truck bed.

9. Rotate the pads on the stabilizer arms until they are tight against your truck bed and tighten the jam nut to secure them ([Figure 7](#)).
10. Slide the ends of the ratchet straps between the bumper and tailgate on your vehicle and attach them to a solid point on the truck frame rail.

**Note:** You may have to drill a hole in the truck frame rail to attach them.

11. Step on the leg-assembly wheels to pivot them and stow them under the leg assembly ([Figure 13](#)).

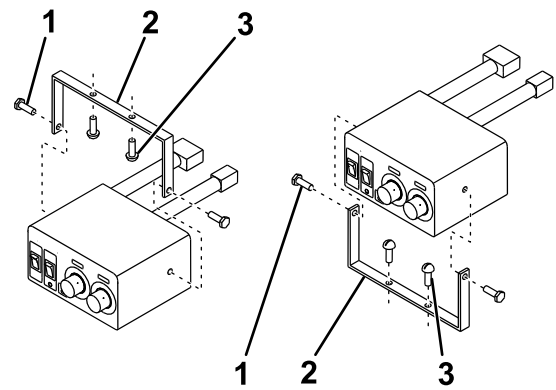


**Figure 13**

g186463

1. Leg-assembly wheels

12. Plug the spreader harness into the vehicle wire harness at the bumper.



**Figure 14**

g186464

1. Mounting bracket bolt
2. Mounting bracket
3. Sheet-metal screw

2. Attach the mounting bracket to the vehicle using 2 sheet-metal screws ([Figure 14](#)).
3. Attach the controller to the mounting bracket with the previously removed bolts.

**Note:** Position the controller screen so that it is clearly visible to the driver.

4. Connect the wire harness controller connector to the controller.

## **Installing the Spreader Controller**

Mount the controller in the cab where it does not interfere with vehicle operation or visibility.

**Important:** Do not mount the controller in a location that vehicle occupants could contact it during a crash.

1. Remove the mounting bracket from the controller ([Figure 14](#)).

# Product Overview

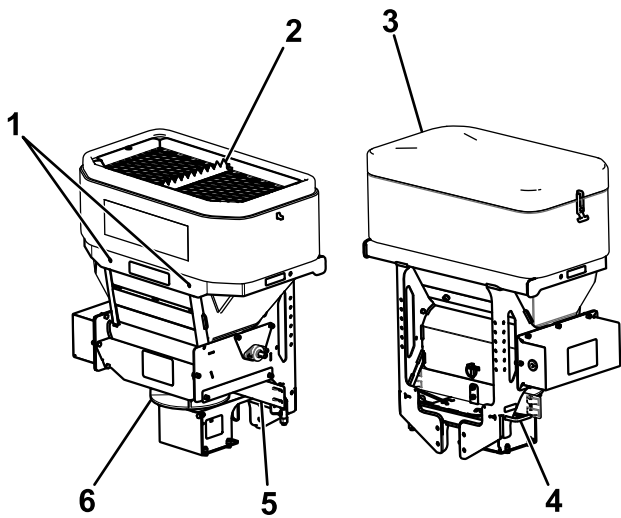


Figure 15

g186465

- |                 |                       |
|-----------------|-----------------------|
| 1. Lift points  | 4. Spinner spring pin |
| 2. Bag splitter | 5. Material deflector |
| 3. Hopper cover | 6. Spinner            |

## Controls

Become familiar with all the controls before you operate the spreader.

### Material Deflector

The material deflector controls the spread of materials; you can adjust the controls to provide different spread patterns; refer to [Adjusting the Material Deflectors \(page 15\)](#).

## Specifications

**Note:** Specifications and design are subject to change without notice.

Hopper height	66 cm (26 inches)
Hopper width	91 cm (36 inches)
Hopper depth	53 cm (21 inches)
Spreader weight (empty)	100 kg (220 lb)
Capacity	0.3 m <sup>3</sup> (11 ft <sup>3</sup> )

## Spreader Controller

The spreader controller lets you operate your spreader and displays information about your machine.

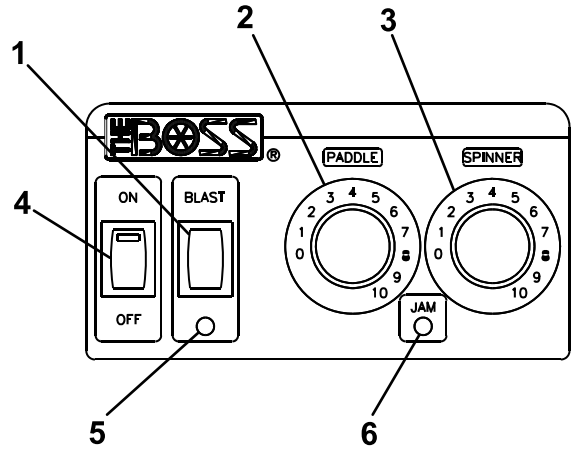


Figure 16

g186466

- |                       |                  |
|-----------------------|------------------|
| 1. Blast button       | 4. On/Off button |
| 2. Paddle speed dial  | 5. Yellow LED    |
| 3. Spinner speed dial | 6. Red LED       |

- On/Off switch—turns the controller on or off
- Blast switch—momentarily sends full power to the spinner motor and paddle as long as it is pressed.
- Paddle speed dial—increases the paddle motor speed when turned clockwise, and decreases the paddle motor speed when turned counterclockwise.
- Spinner Speed dial—increases the spinner motor speed when turned clockwise, and decreases the spinner motor speed when turned counterclockwise.
- Yellow LED—indicates that the Blast switch is active
- Red LED—indicates that the spreader is clogged and the controller is shut down

# Operation

**Note:** Determine the left and right sides of the machine from the normal operating position.

## Removing the Spreader Equipped with the Slide-In Attachment

1. Ensure that the spreader controller is in the OFF position.
2. Unplug the spreader wire harness from the vehicle wire harness and attach the weather caps to each end.
3. Loosen the ratchet straps and stabilizer arms.
4. Remove the cotter hairpin and clevis pin from the vehicle hitch.
5. Slide the spreader out of the receiver hitch of your vehicle (Figure 17).

### **▲ DANGER**

The spreader is heavy and could cause serious injury if dropped.

Ensure that your footing is stable, and avoid lifting the spreader on slippery or uneven surfaces.

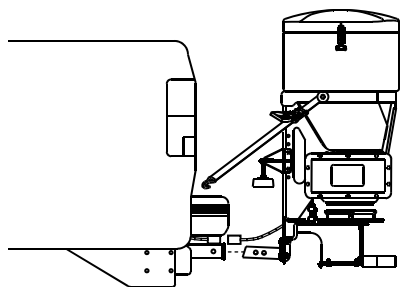


Figure 17

g186467

### **▲ DANGER**

The spreader is heavy and could cause serious injury if dropped.

Ensure that your footing is stable, and avoid lifting the spreader on slippery or uneven surfaces.

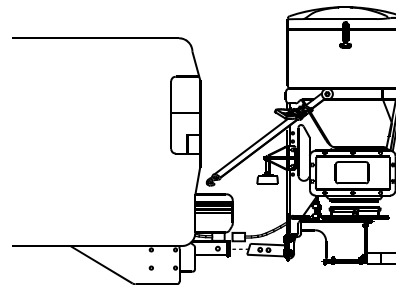


Figure 18

g186467

3. Secure the spreader hitch to the vehicle hitch using the clevis pin and cotter hairpin.
4. Rotate the pads on the stabilizer arms until they are tight against your truck bed and tighten the jam nut to secure them.
5. Slide the ends of the ratchet straps between the bumper and tailgate on your vehicle and attach them to a solid point on the truck frame rail.
6. Remove the weather caps from both the vehicle and spreader wire harnesses, and plug the spreader harness into the vehicle wire harness.

6. Move the spreader to your storage area.

## Mounting the Spreader Equipped with the Slide-In Attachment

1. Ensure that the spreader controller is in the OFF position.
2. Slide the hitch of the spreader into the receiver hitch of your vehicle and line up the second hole on the spreader hitch with the hole in the hitch of your vehicle (Figure 18).

**Note:** If the spreader contacts the bumper of your vehicle, slide the spreader out and align the first hole of the spreader hitch instead.

# Removing the Spreader

## Equipped with the RT3 Attachment

1. Ensure that the spreader controller is in the OFF position.
2. Unplug the spreader wire harness from the vehicle wire harness and attach the weather caps to each end.
3. Pivot the leg-assembly wheels from under the spreader (Figure 19).

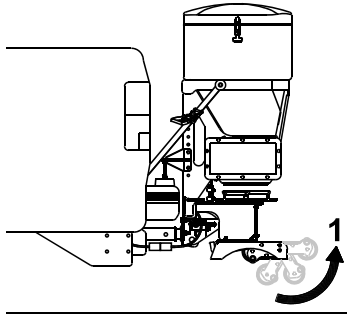


Figure 19

g186468

1. Leg-assembly wheels

4. Loosen the ratchet straps and stabilizer arms.
5. Rotate the locking lever on the RT3 attachment to the UNLOCK position (Figure 20).

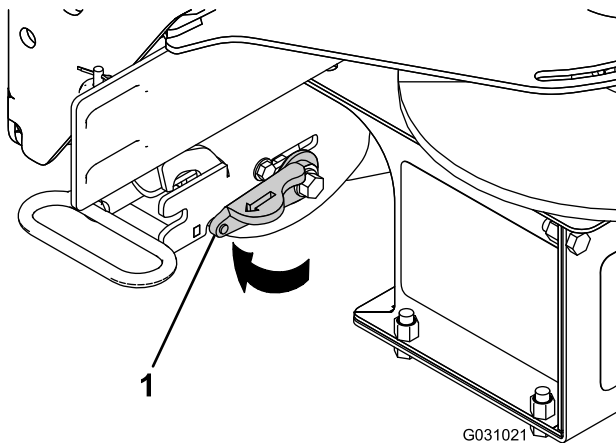


Figure 20

G031021

g031021

1. Locking lever

6. Tilt the spreader down to release the top pin of the RT3 attachment (Figure 21).

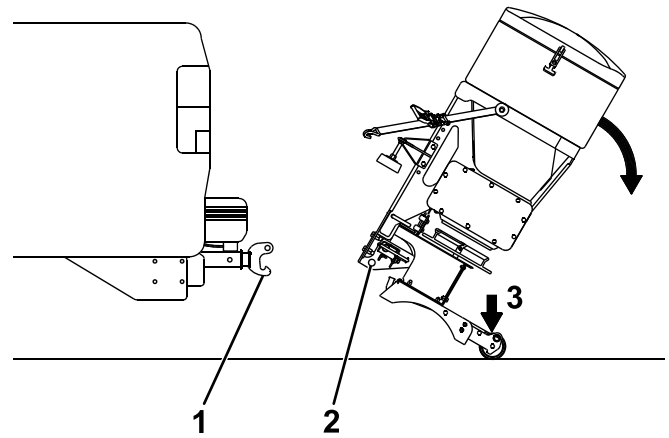


Figure 21

g186469

1. RT3 hitch hook
2. Bottom pin
3. Step here

7. Grip the spreader firmly and step on the leg assembly to rotate it back until the bottom pin of the RT3 attachment clears the hook on the RT3 hitch (Figure 21).

### **⚠ DANGER**

The spreader is heavy and could cause serious injury if dropped.

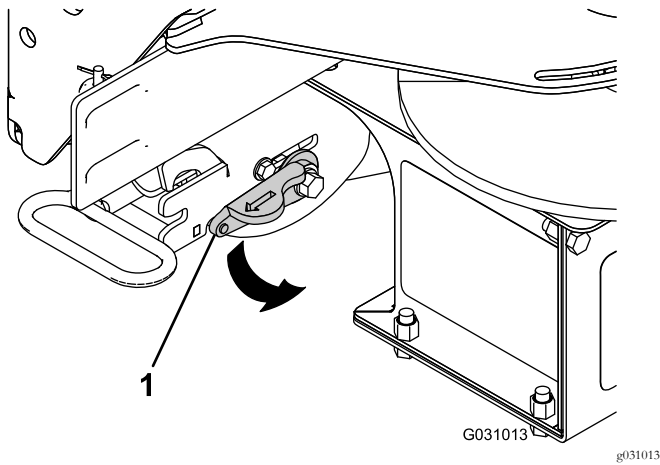
Ensure that your footing is stable, and avoid lifting the spreader on slippery or uneven surfaces.

8. Pull the spreader back and lower it to the ground.
9. Move the spreader to your storage area.

## Mounting the Spreader

### Equipped with the RT3 Attachment

1. Ensure that the spreader controller is in the OFF position.
2. Rotate the locking lever on the RT3 attachment to the LOCK position (Figure 22).



**Figure 22**

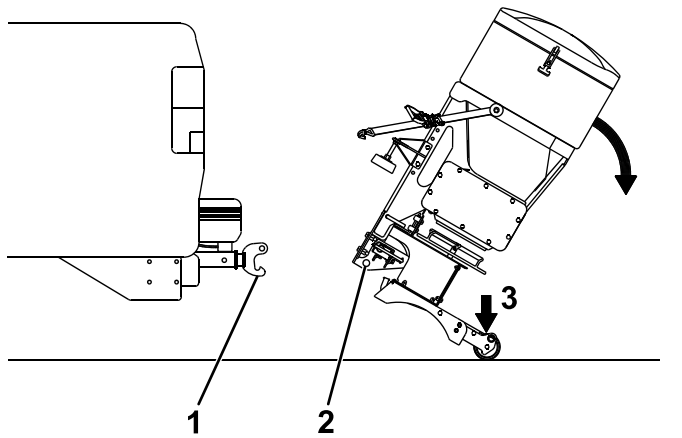
1. Locking lever

3. Grip the spreader firmly and step on the leg assembly to rotate it back until the bottom pin of the RT3 attachment clears the hook on the RT3 hitch (Figure 23).

**⚠ DANGER**

The spreader is heavy and could cause serious injury if dropped.

Ensure that your footing is stable, and avoid lifting the spreader on slippery or uneven surfaces.



**Figure 23**

1. RT3 hitch hook
2. Bottom pin
3. Step here

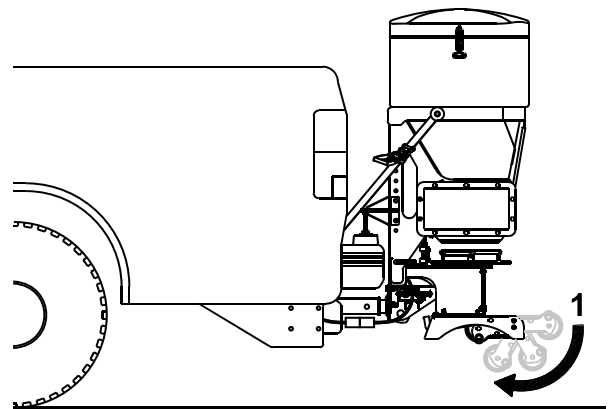
4. Push the spreader forward and lower the bottom pin of the RT3 attachment onto the hitch hook.
5. Tip the spreader upright until the top pin of the RT3 attachment locks into place.

**⚠ DANGER**

The spreader is heavy and could cause serious injury or property damage if it falls off your vehicle.

Ensure that the top pin of the RT3 attachment is fully locked into place and that the safety latch is down.

6. Rotate the pads on the stabilizer arms until they are tight against your truck bed and tighten the jam nut to secure them.
7. Slide the ends of the ratchet straps between the bumper and tailgate on your vehicle and attach them to a solid point on the truck frame rail.
8. Step on the leg-assembly wheels to pivot them and stow them under the leg assembly (Figure 24).



**Figure 24**

1. Leg-assembly wheels

9. Remove the weather caps from both the vehicle and spreader wire harnesses, and plug the spreader harness into the vehicle wire harness.

## Loading the Spreader

**Important:** Only use dry sand, salt, or a sand/salt mixture in the spreader. Other materials could cause damage to the machine.

1. Ensure that the spreader is securely mounted to your vehicle and is not over slippery or uneven terrain.
2. Remove the hopper cover and ensure that the top screen is installed and closed.
3. Determine the amount of material that you can safely transport in your spreader; refer to [Specifications \(page 10\)](#).
4. Fill the hopper using the following methods:
  - If using bagged materials, place the bag on the top screen bag splitter and work it back and forth to split the bag. Continue to move and shake the bag until it is empty.

**Note:** Have 2 people lift bags weighing more than 18 kg (40 lb).

**Note:** Keep your hands and fingers clear of the bag splitter when loading materials.

- If using dry bulk materials, load the materials into the hopper through the top screen to break up any large, impassable chunks that may clog the spreader.

## Operating the Spreader

### **▲ DANGER**

Hands, feet, and clothing can get caught in the moving parts of the spreader and cause serious bodily injury and loss of limbs.

Keep your hands, feet, and clothing away from the moving spinner and attachment points.

### **▲ CAUTION**

The spreader throws material at a high speed that could cause minor injuries to bystanders.

Bystanders should stay a minimum of 7.6 m (25 ft) away from operating spreaders.

1. Flip the On/Off switch to the ON position.

**Note:** Always check for bystanders before starting the spreader.

2. Use the speed dials to set your desired spinner and paddle speeds.

**Note:** The paddle speed determines how quickly the material is pulled from the hopper. The spinner speed determines how far the material is thrown.

3. While spreading, you can press the Blast switch to momentarily increase the speed of the paddle and spinner motor.
4. Flip the On/Off switch to the OFF position when you are finished spreading to stop the spreader.

## Freeing a Clog

The red LED on the spreader controller will illuminate when debris gets wedged in the spreader and the controller is overloaded.

1. If the red LED illuminates, quickly pulse the BLAST button.
2. If the clog is not cleared automatically, disconnect the spreader wire harness and manually free the clog.

## Unloading the Spreader

1. Position the spreader in the area where you want to deposit the material.
2. Ensure that the spreader controller is in the OFF position, and unplug the spreader wire harness from the vehicle wire harness.
3. Pull the spinner spring pin outward and lock it into the keeper slot (Figure 25).

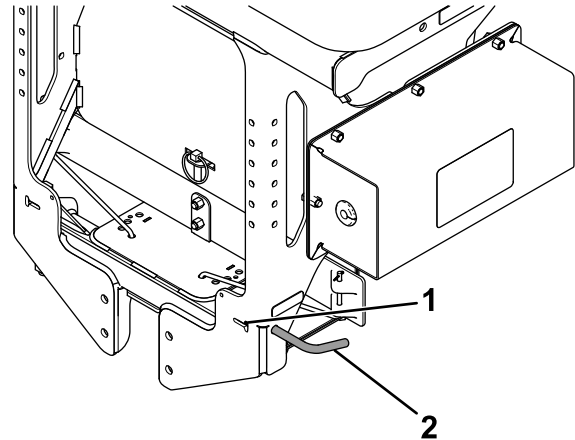


Figure 25

g186475

1. Keeper slot
2. Spinner spring pin

4. Swing the spinner assembly free from the spreader (Figure 26).

**Note:** Do not move the vehicle when the spinner assembly is swung out.

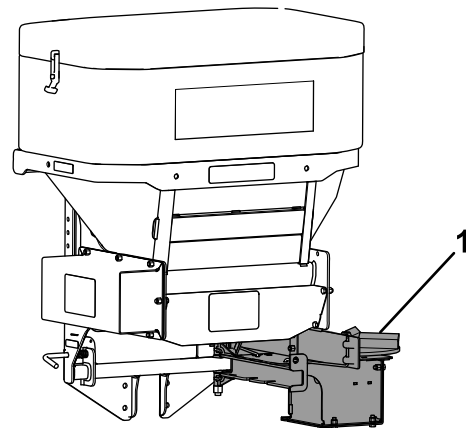


Figure 26

g186470

1. Spinner assembly

5. Connect the spreader wire harness to the vehicle wire harness.
6. Turn on the spreader controller and run the spreader until the hopper is empty.

## ⚠ CAUTION

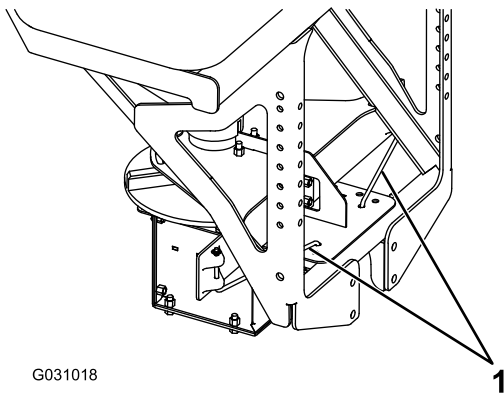
The spreader throws material at a high speed that could cause minor injuries to bystanders.

Bystanders should stay a minimum of 7.6 m (25 ft) away from operating spreaders.

- Once the hopper is empty, turn off the spreader controller.
- Swing the spinner assembly back into place and release the spinner spring pin.

## Adjusting the Material Deflectors

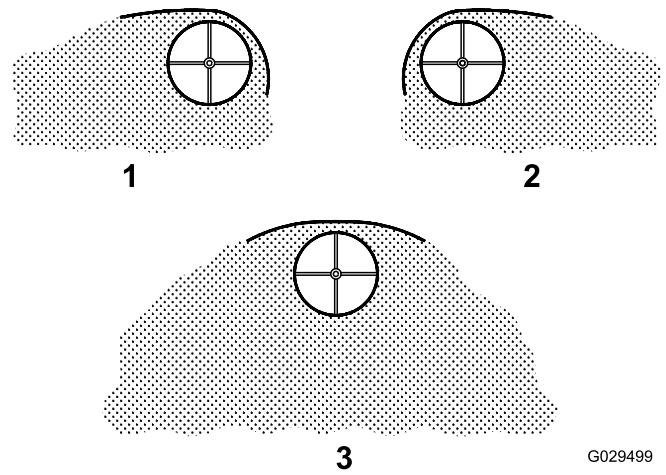
You can adjust the material deflectors by inserting the deflector pins into the staggered holes near the spinner (Figure 27).



**Figure 27**

- Material deflector pins

You can adjust the spread pattern by positioning the deflectors as shown in Figure 28.



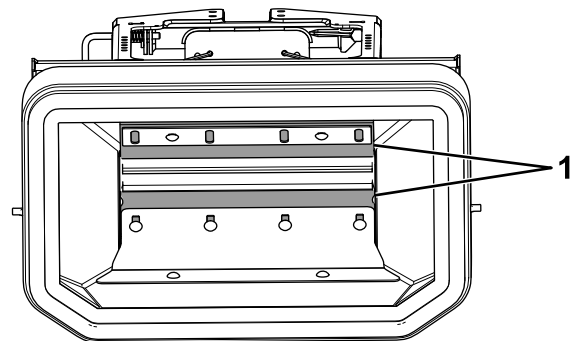
**Figure 28**  
Deflection Settings

- Driver side open
- Passenger side open
- Both sides open

## Adjusting the Rubber Flaps

The rubber flaps on the spreader wear down over time and must be adjusted.

- Ensure that the spreader controller is in the OFF position, and unplug the spreader wire harness from the vehicle wire harness.
- Remove the hopper cover and top screen.
- Loosen the bolts securing the rubber flaps and slide them down until at least 32 mm (1-1/4 inches) of the flap sticks out past the metal plate (Figure 29).



**Figure 29**

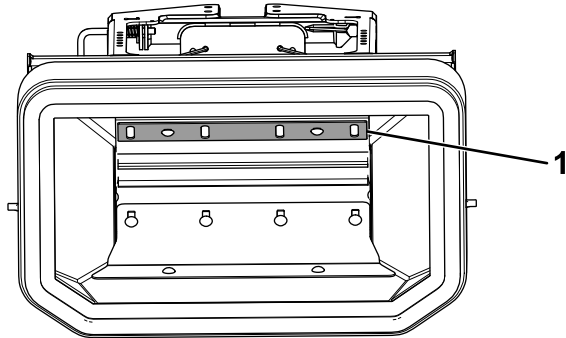
- Rubber flaps

- Tighten the loosened bolts.
- Install the previously removed top screen and hopper cover.

# Adjusting the Spreader Vibration

1. Ensure that the spreader controller is in the OFF position, and unplug the spreader wire harness from the vehicle wire harness.
2. Remove the hopper cover and top screen.
3. Loosen the vibration tray bolts, and move the plate to the desired position (Figure 30).

**Note:** Moving the plate down increases the vibration of the spreader. Moving the plate up decreases the vibration of the spreader.



g186473

**Figure 30**

1. Plate
- 

4. Tighten the loosened bolts.
5. Install the previously removed top screen and hopper cover.

## Operating Tips

- Know the area in which you are working; hidden obstructions such as curbs, sidewalks, and pipes, can damage your spreader or vehicle.
- Do not let the ice build up; always start as soon as possible.
- Always wear your seatbelt when spreading.
- Always remember to spread at a safe speed. Spreading faster can be hard on your vehicle as its load is greatly increased.
- **Never** ride on or put body parts into the spreader while servicing or operating it.



# Troubleshooting

Problem	Possible Cause	Corrective Action
The controller has no power (the green LED is not on).	<ol style="list-style-type: none"> <li>1. The battery connections are corroded.</li> <li>2. The 40 amp in-line fuse in the vehicle side harness is bad.</li> <li>3. The controller is not plugged into the vehicle side harness.</li> </ol>	<ol style="list-style-type: none"> <li>1. Clean the battery connections.</li> <li>2. Replace the fuse.</li> <li>3. Plug in the controller.</li> </ol>
The spinner motor does not work.	<ol style="list-style-type: none"> <li>1. The spreader and vehicle wire harnesses are not connected.</li> <li>2. The controller is not plugged into the vehicle side harness.</li> <li>3. The spinner motor is not connected to the spreader side harness.</li> </ol>	<ol style="list-style-type: none"> <li>1. Connect the wire harnesses.</li> <li>2. Plug in the controller.</li> <li>3. Contact your Authorized Service Dealer.</li> </ol>
The paddle motor does not work.	<ol style="list-style-type: none"> <li>1. The spreader and vehicle wire harnesses are not connected.</li> <li>2. The controller is not plugged into the vehicle wire harness.</li> <li>3. The paddle motor is not connected to the spreader wire harness.</li> </ol>	<ol style="list-style-type: none"> <li>1. Connect the wire harnesses.</li> <li>2. Plug in the controller.</li> <li>3. Connect the wire harnesses.</li> </ol>
The red LED is lit on the controller.	<ol style="list-style-type: none"> <li>1. The spreader is jammed.</li> <li>2. The vibration tray is not adjusted properly.</li> </ol>	<ol style="list-style-type: none"> <li>1. Refer to the Freeing a Clog section.</li> <li>2. Refer to the Adjusting the Vibration Tray section.</li> </ol>
The spinner motor works but the spinner and auger are not turning.	<ol style="list-style-type: none"> <li>1. The connection between the auger and spinner and the motor shaft is bad.</li> <li>2. The connection between the motor shaft and the motor hub is bad.</li> </ol>	<ol style="list-style-type: none"> <li>1. Contact your Authorized Service Dealer.</li> <li>2. Contact your Authorized Service Dealer.</li> </ol>

**Notes:**

# BOSS Products Commercial Warranty

**What this warranty covers:**

This warranty covers defects in material and workmanship except as set forth below.

**Who is covered:**

The original purchaser from an authorized dealer.

**For how long:**

**Complete Product:** 2 years from the date of purchase.

**Labor:** 2 years from the date of purchase for complete product.

**Parts:** 1 year from the date of purchase. (no Labor)

**What BOSS Products will do:**

BOSS Products will, at its sole option, repair or replace defective parts at no charge.

**What you must do for warranty service:**

To obtain warranty service, purchaser must return the defective product to any authorized BOSS Products dealer (preferably the one from whom the product was purchased) within the warranty period. Purchaser must be able to verify the original purchase date. All transportation costs to and from the dealer will be the responsibility of the purchaser. To locate the authorized BOSS dealer nearest to you, call toll free: (800) 286-4155.

**What is not covered:**

1. Expendable parts such as hoses, plow shoes, cutting edges, pins, nuts, bolts, blade guides, etc.
2. Products repaired or altered by anyone other than an authorized BOSS Products dealer.
3. Products which have been subject to misuse, negligence, accident, improper installation, maintenance, care, or storage.
4. Products mounted on vehicles other than those listed in the *BOSS Snowplow Application Chart and Selection Guide*.
5. BOSS Products does not assume liability for damage to your motor vehicle resulting from the attachment or use of any BOSS products. Vehicle risk is the sole responsibility of the purchaser.

**Limits of BOSS Products Liability are:**

**BOSS Products' liability is expressly limited to repair or replacement of defective parts. BOSS Products shall not be liable for consequential, incidental, or contingent damages whatsoever, even if damages are caused by the negligence or fault of BOSS Products. The foregoing warranties are exclusive and in lieu of all other express and implied warranties including, but not limited to, the implied warranties of merchantability and fitness for a particular purpose.**

This warranty does not apply if you purchased your product for personal, family, or household use. In this case, refer to the BOSS Products Limited Consumer Warranty.

BOSS Products is a division of  
The Toro® Company  
P.O.Box 787 2010 The BOSS Way  
Iron Mountain, MI 49801

(2016-2017)

# BOSS Products Consumer Warranty

**What this warranty covers:**

This warranty covers defects in material and workmanship except as set forth below.

**Who is covered:**

The original retail purchaser of a BOSS product who purchases it for personal, family, or household use.

**For how long:**

**Complete Product:** 2 years from the date of purchase.

**Labor:** 2 years from the date of purchase for complete product.

**Parts:** 1 year from the date of purchase. (no Labor)

**What BOSS Products will do:**

BOSS Products will, at its sole option, repair or replace defective parts at no charge.

**What you must do for warranty service:**

To obtain warranty service, purchaser must return the defective product to any authorized BOSS Products dealer (preferably the one from whom the product was purchased) within the warranty period. Purchaser must be able to verify the original purchase date. All transportation costs to and from the dealer will be the responsibility of the purchaser. To locate the authorized BOSS dealer nearest to you, call toll free: (800) 286-4155.

**What is not covered:**

1. Expendable parts such as hoses, plow shoes, cutting edges, pins, nuts, bolts, blade guides, etc.
2. Products repaired or altered by anyone other than an authorized BOSS Products dealer.
3. Products which have been subject to misuse, negligence, accident, improper installation, maintenance, care, or storage.
4. Products mounted on vehicles other than those listed in the *BOSS Snowplow Application Chart and Selection Guide*.
5. BOSS Products does not assume liability for damage to your motor vehicle resulting from the attachment or use of any BOSS products. Vehicle risk is the sole responsibility of the purchaser.

**Limits of BOSS Products Liability are:**

**BOSS Products' liability is expressly limited to repair or replacement of defective parts. BOSS Products shall not be liable for consequential, incidental, or contingent damages whatsoever, even if damages are caused by the negligence or fault of BOSS Products. The foregoing warranties are exclusive and in lieu of all other express and implied warranties including, but not limited to, the implied warranties of merchantability and fitness for a particular purpose.**

**State laws:**

Some states do not allow exclusion of incidental or consequential damages or the limitations on how long an implied warranty lasts, so these limitations or exclusions may not apply to you. This warranty gives you specific legal rights and you may also have the other rights which vary from state to state.

This warranty does not apply if you purchased your product for personal, family, or household use. In this case, refer to the BOSS Products Limited Consumer Warranty.

BOSS Products is a division of  
The Toro® Company  
P.O.Box 787 2010 The BOSS Way  
Iron Mountain, MI 49801

(2016-2017)