

Installation Instructions

1. Remove the spinner assembly; refer to your spreader *Owner's Manual*.
2. Remove the rear cover from the hopper ([Figure 1](#)).

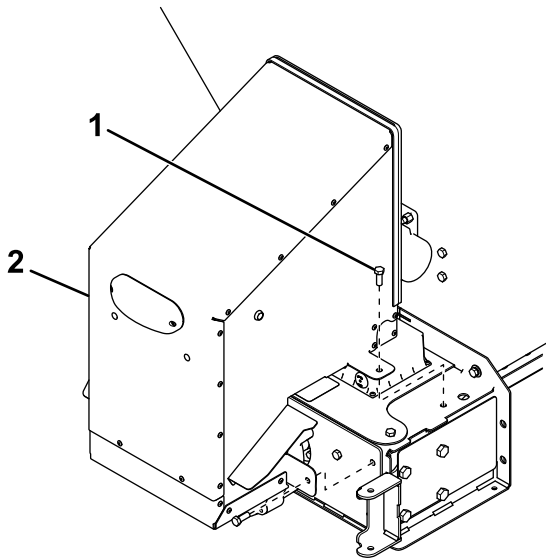


Figure 1

g223387

1. Bolt
2. Rear cover

3. Remove the rear top screen section.
4. Using the existing hardware from the inverted-V bracket, secure the mounting plate to the hopper ([Figure 2](#)).

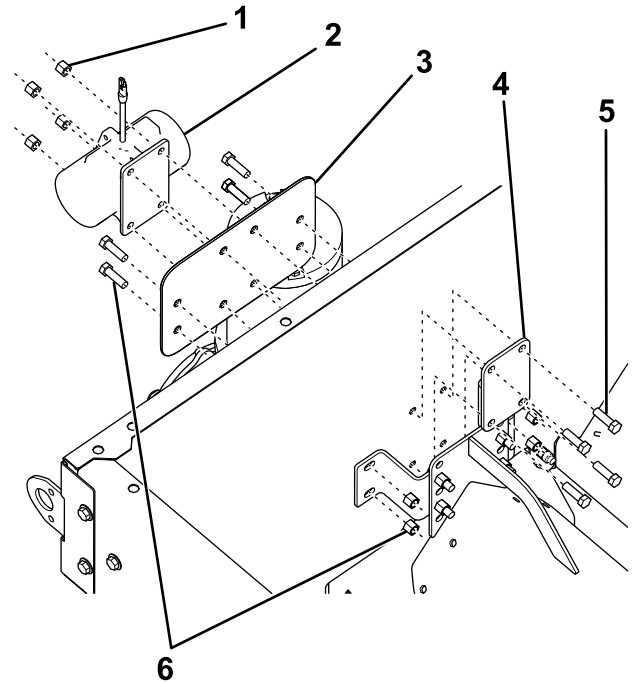


Figure 2

g282541

- | | |
|-------------------|----------------------|
| 1. Locknut | 4. Backing plate |
| 2. Vibrator | 5. Bolt |
| 3. Mounting plate | 6. Existing hardware |

5. Secure the vibrator to the mounting plate and hopper using 4 bolts, the backing plate, and 4 locknuts ([Figure 2](#)).
6. Torque the bolts to 26 N·m (19 ft-lb).
7. Connect the vibrator to the spreader wire harness.
8. Install the previously removed top screen, rear cover, and spinner assembly.

