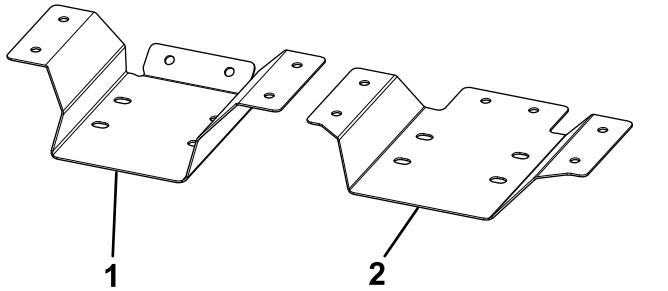


### Installation Instructions

1. Use [Figure 1](#) to determine which outer mounting plate to use with your spreader model.

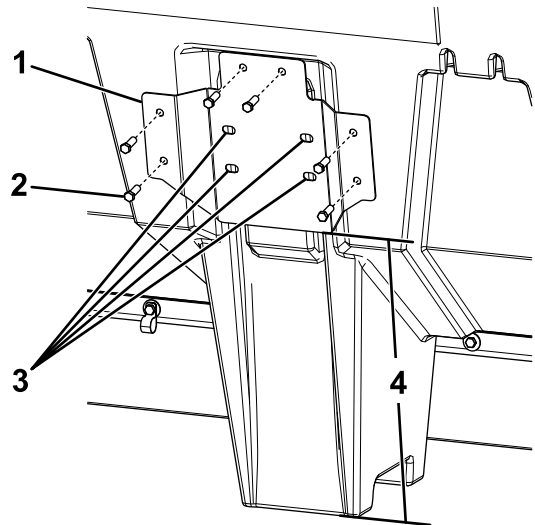


**Figure 1**

1. For VBX 8000 spreaders
2. For VBX 6500 and 9000 spreaders

2. Position the outer mounting plate on the spreader hopper according to your spreader model:

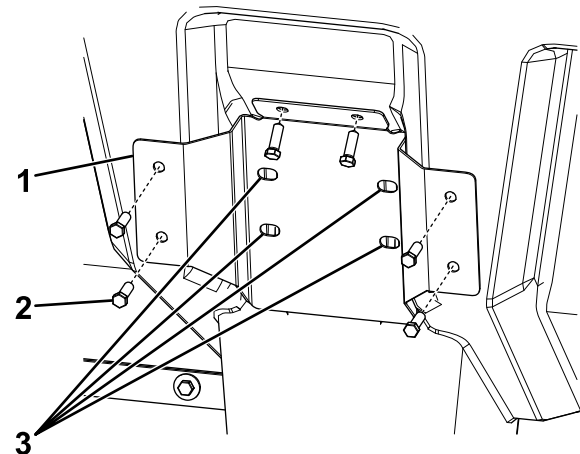
- For VBX 6500 spreaders, the bottom of the mounting plate should be approximately 37 cm (14-9/16 inches) from the bottom of the spreader legs ([Figure 2](#)).
- For VBX 8000 spreaders, position the angled end of the mounting plate flush against the angle on the hopper side ([Figure 3](#)).
- For VBX 9000 spreaders, the bottom of the mounting plate should be approximately 40.7 cm (16-1/16 inches) from the bottom of the spreader legs ([Figure 2](#)).



**Figure 2**

VBX 6500 and 9000

1. Outer mounting plate
2. Lag bolt
3. Mark and drill.
4. Measure for VBX 6500 and 9000 spreaders.



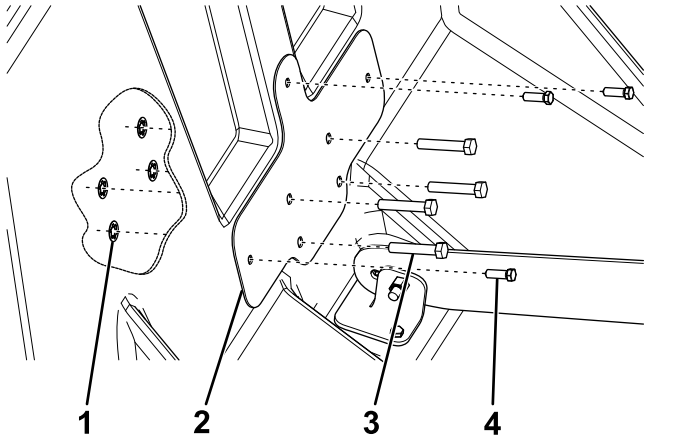
**Figure 3**

VBX 8000

1. Outer mounting plate
2. Lag bolt
3. Mark and drill.

3. Mark the location of the 4 central holes in the mounting plate on the hopper ([Figure 2](#) and [Figure 3](#)).

4. Drill 4 holes (3/8 inch) at the marked locations.
5. Secure the outer mounting plate to the hopper using 6 lag bolts (Figure 2 and Figure 3).
6. Secure the inner mounting plate to the inside of the spreader hopper using the 4 bolts listed for your spreader below and 4 push nut retainers (Figure 4).
  - For VBX 6500 and 9000 spreaders, use the 2-1/2-inch long bolts.
  - For VBX 8000 spreaders, use the 2-inch long bolts.
8. Secure the inner mounting plate to the hopper using 3 lag bolts (Figure 4).
9. Torque the 4 bolts securing the vibrator to 26 N·m (19 ft-lb).
10. Connect the vibrator connector to the spreader wire harness.
11. Repeat the installation on the other side of the spreader.

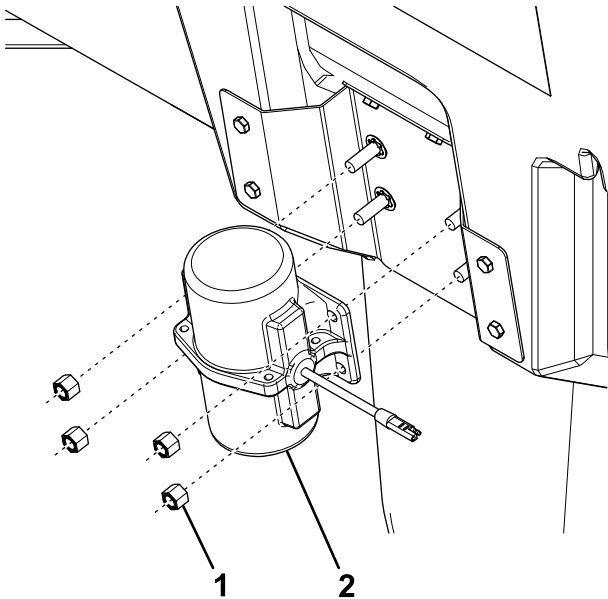


g289903

**Figure 4**

- |                         |             |
|-------------------------|-------------|
| 1. Push nut retainer    | 3. Bolt     |
| 2. Inner mounting plate | 4. Lag bolt |

7. Slide the vibrator on to the 4 bolts and secure with 4 locknuts (Figure 5).



g280453

**Figure 5**

- |            |             |
|------------|-------------|
| 1. Locknut | 2. Vibrator |
|------------|-------------|