

BOSS Products limited consumer warranty and BOSS Products commercial warranty policies are located at www.bossplow.com.

Patent: www.ttcopats.com.

Safety

Installing this kit will change the weight of your vehicle. Ensure that your vehicle does not exceed the front gross-axle-weight rating (FGAWR), at any time. You may need to weigh the vehicle and add ballast or limit the payload of the vehicle to compensate.

Preparation

Ensure that only trained personnel install and perform maintenance on the equipment.

Never disable, remove, or relocate any sensors or other components related to the operation of the air bags in your vehicle.

Always follow the vehicle manufacturer's recommendations relating to snowplow or spreader installation. For recommended vehicle models, refer to the BOSS product selector tool at www.BOSSPlow.com.

Installation

⚠ DANGER

Vehicle engines contain moving parts and can become extremely hot, capable of causing severe burns and serious bodily harm.

Shut off the engine and allow it sufficient time to cool down before installing this kit.

⚠ DANGER

Vehicle batteries can cause dangerous electrical shocks that could lead to severe burns or death.

Remove the key from the vehicle and disconnect the battery before installing this kit.

Note: Apply dielectric grease to all electrical connections.



Installing the Wire Harness

1. Secure the vehicle-side main connector near the center of the rear bumper using cables ties or the bracket provided with the kit.
2. Route the wire harness along the driver-side frame rail and into the engine compartment, and secure it with cable ties.

Note: Keep the wire harness away from any hot or moving parts.

3. Connect the in-cab harness to the main vehicle-side wiring harness near the firewall. Secure the harness with cable ties. If this is the second device being connected, remove the 4-pin cap from the in-cab harness and plug the main vehicle-side harness in its place.
4. Install the fuse block within 30 cm (12 inches) of the battery and remove the fuse-block cover.

5. Connect the red power/ground cable to the fuse block.

Note: Ensure that the 150 A fuse is installed.

6. Connect the power cable to the other end of the fuse block.
7. Install the cover onto the fuse block.
8. Connect the power cable to the positive (+) battery post.

Important: Do not connect the ground cable at this time.

9. Wrap all of the excess wire and secure it.
10. Connect the black power/ground cable and the controller ground cable to the negative (-) battery post.

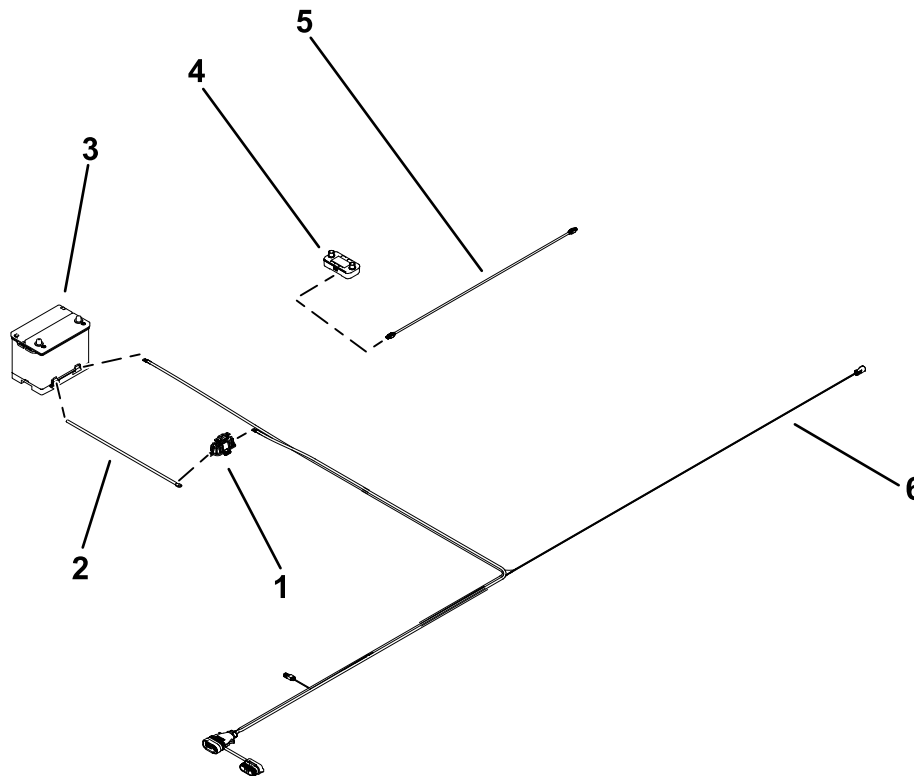


Figure 1

g492554

- | | |
|------------------|-------------------------|
| 1. Fuse holder | 4. In-cab controller |
| 2. Battery cable | 5. Display cord |
| 3. Battery | 6. Vehicle-side harness |

Installing the Spreader Controller

Note: Mount the controller in the cab where it does not interfere with vehicle operation or visibility.

Important: Do not mount the controller in a location that vehicle occupants could contact it during a crash.

1. Attach the mounting bracket to the vehicle using 2 hook and loop fasteners or 2 sheet-metal screws.

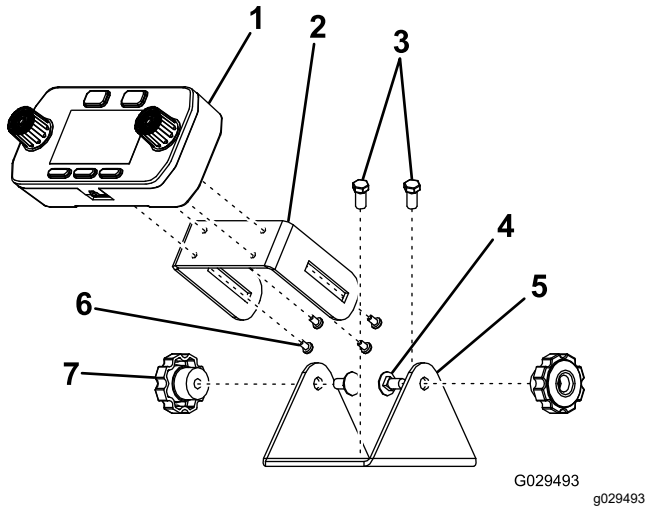


Figure 2

- | | |
|-----------------------|---------------------|
| 1. Controller display | 5. Mounting bracket |
| 2. Sliding bracket | 6. Pan-head screws |
| 3. Sheet-metal screws | 7. Thumb nut |
| 4. Carriage bolt | |

2. Connect the controller display to the sliding bracket using 4 pan-head screws.
3. Attach the sliding bracket to the mounting bracket using 2 carriage bolts and thumb nuts.
Note: Position the controller screen so that it is clearly visible to the driver.
4. Connect the controller to the in-cab harness with the provided controller cable. Secure excess wire so it does not interfere with driver operation.

Checking the Installation

1. Check that the unit type listed on the controller display matches your machine type.
Note: If the unit type does not match your machine, contact your Authorized BOSS Dealer about adjusting the control module.
Note: Refer to the Owner's Manual for operation, safety, maintenance, and troubleshooting.

BOSS
S N O W P L O W