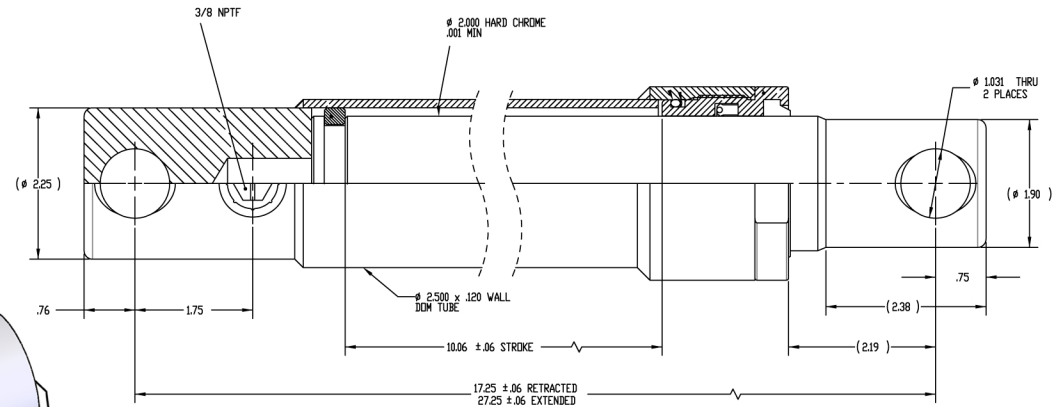


# HYD09383

## Angle Cylinder, 10' Plows

(Direct replacement for the HYD07683)

- Push (or Ram) type cylinder (work is performed as the rod extends from the cylinder)
- Double lip polyurethane seal
- Cannot stop leak by tightening the gland nut.
- 10" stroke, 2" rod, chrome plated (.001" min)
- 2.500" bore x .120 wall DOM tube.
- Maximum operating pressure, 3000 PSI

**BODY ASSEMBLY****GLAND****GUIDE RING****ROD****O-RING****WIPER****BACKUP RING****ROD SEAL**

**Service Parts:**  
**Seal Kit - HYD09384**  
**Gland Nut - HYD09385**