

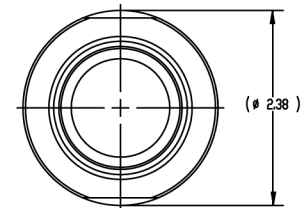
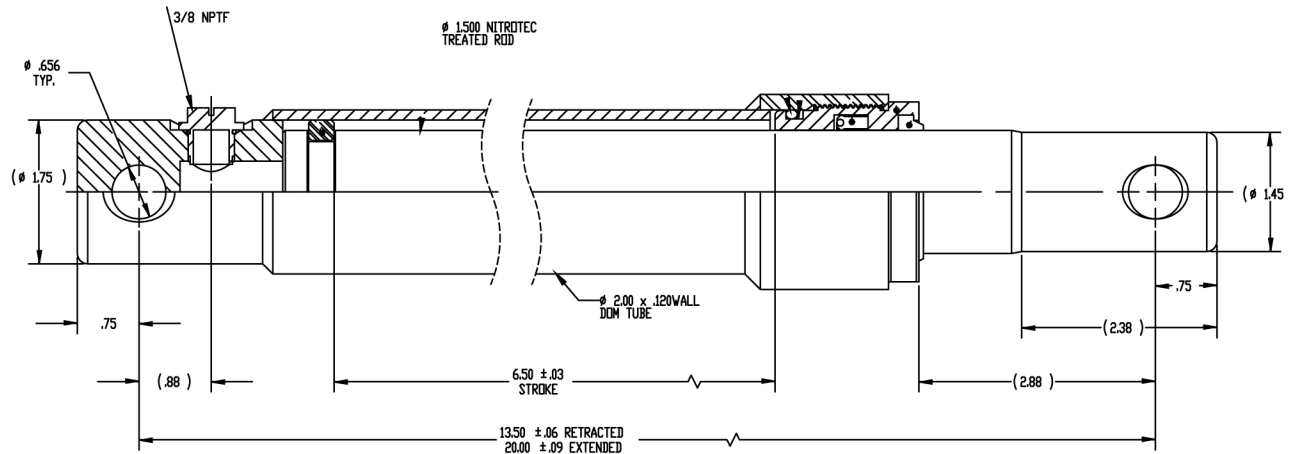
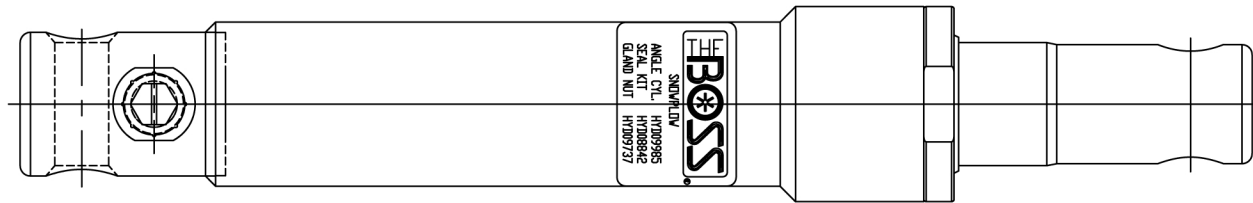


SNOWFLOW

HYD09985

Angle Cylinder (Sport)

- Push (or Ram) type cylinder (work is performed as the rod extends from the cylinder)
- 6.50" stroke, 13.50" retracted length, 20.00" extended length, 1.50" rod
- 2" O.D. x .120 wall DOM Tube
- Maximum operating pressure 3000 psi



Service Parts:
Seal Kit - HYD08842
Gland Nut - HYD09737