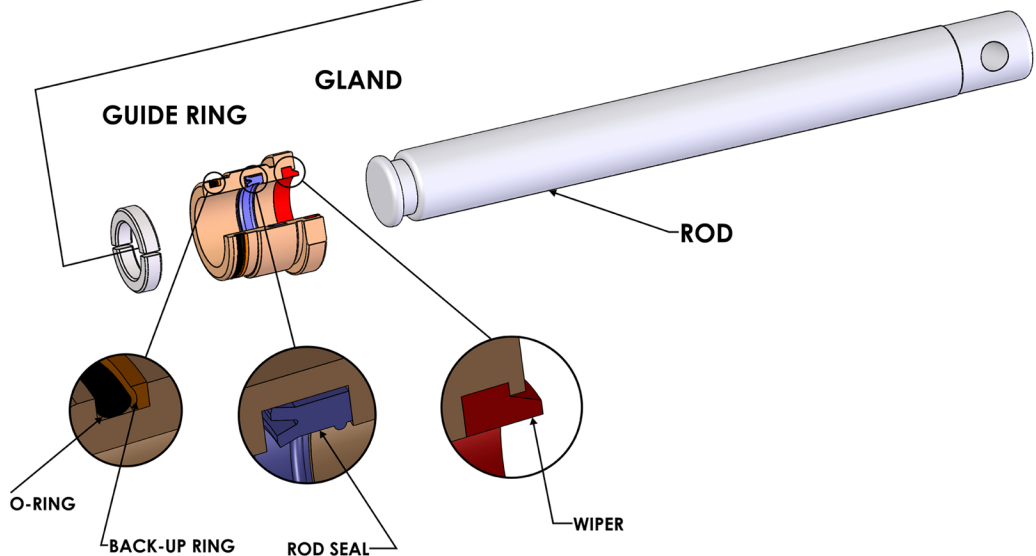
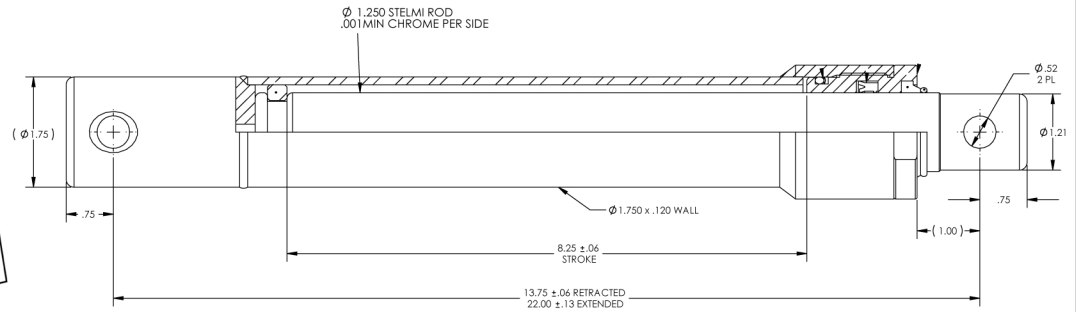
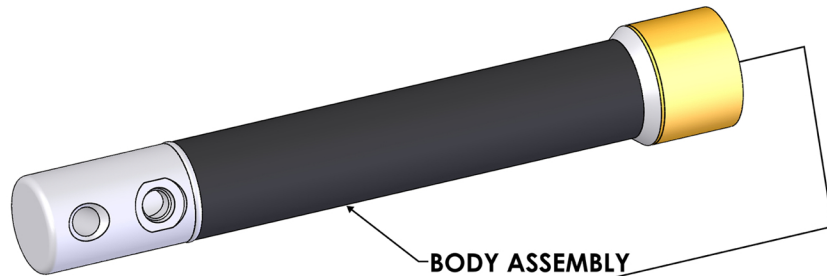
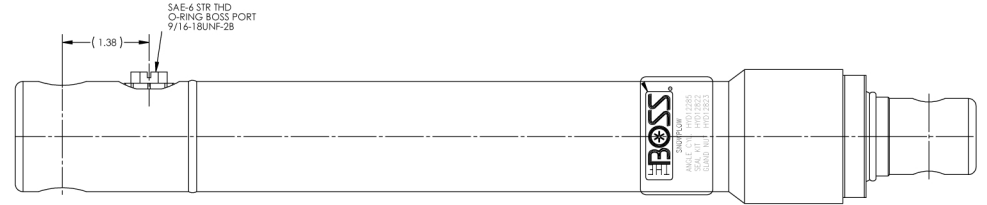


HYD12285

Angle Cylinder UTV/V - Blade

- Push (or Ram) type cylinder (work is performed as the rod extends from the cylinder)
- 8.250" stroke 13.750" retracted length, 22.00" extended length
- 1.250" rod x 1.50" bore
- 1.750" O.D. x .120 wall DOM tube
- Maximum operating pressure 2500 psi



Service Parts:
Seal Kit - HYD12822
Gland Nut - HYD12823