

THE BOSS®
SNOWPLOW

***"STRAIGHT - BLADE"
(WITH RAPID-TACH II™)
OWNER'S MANUAL***

BOSS PRODUCTS

M.J. ELECTRIC, INC.
P.O. Box 788
Iron Mountain, MI 49801

TABLE OF CONTENTS

WARNINGS	1
INTRODUCTION	2
PLOW FEATURES	3
TIPS ON PLOWING SNOW	4
SNOWPLOW MOUNTING PROCEDURE	5
SNOWPLOW REMOVAL PROCEDURE	5
MAINTENANCE	6
PUTTING PLOW INTO STORAGE	6
TAKING PLOW OUT OF STORAGE	7
HYDRAULICS AND ELECTRICAL SYSTEM	9
PARTS LIST	15
TROUBLESHOOTING GUIDE	18
SPECIFICATIONS	20
TORQUE CHART	21
WARRANTY	22

WARNING

Many 1994 and newer model trucks are now equipped with drivers side air bags. DO NOT under any circumstances disable, remove or relocate any sensors or other components related to the operation of the air bags. As with all vehicles, it is advisable to follow the vehicle manufacturers recommendations for mounting snow plows.

WARNING

Vehicles equipped with air bags are designed such that air bags will be activated in a frontal collision equivalent to hitting a solid barrier (such as a wall) at approximately 14 mph or more, or, roughly speaking, a frontal perpendicular collision with a parked car or truck of similar size at approximately 28 mph or more. Careless or high speed driving while plowing snow which results in vehicle decelerations equivalent to or greater than the air bag deployment threshold described above, would deploy the air bag.

WARNING

Make sure plow is properly attached before moving vehicle.

WARNING

When transporting, position plow so as not to block vision or plow headlights.

WARNING

Do not change blade position while traveling.

WARNING

Do not exceed 40 MPH when transporting plow.

WARNING

Do not exceed 14 MPH when plowing.

WARNING

Always lower blade when vehicle is not in use.

WARNING

Read this manual carefully before operating this snowplow.



A REVOLUTION AGAINST SNOW

Congratulations for selecting the BOSS SNOWPLOW. Each BOSS SNOWPLOW sports unique features that will save you time and money. You can be assured that you will enjoy a return on your investment each time you plow.

Your BOSS SNOWPLOW is intended to be mounted on a properly equipped 4-wheel drive vehicle. Consult your dealer or vehicle manufacturer for their recommendations as to vehicle specifications and options.

The BOSS SNOWPLOW has been carefully designed and built for years of carefree performance. With its single lever latch and quick connecting electrical plugs, the BOSS can be attached or removed in seconds. For safety, the BOSS includes cross-over pressure relief to prevent damage by overstress. Where A-Frame and moldboard fatigue are a common problem on conventional plows, the BOSS PLOW's heavy duty T-Frame, along with its high strength Boxed Section Moldboard (Super-Duty Models Only), will stand up to the most severe plowing conditions.

To keep your BOSS PLOW in top shape, take a few minutes to study this manual. It will show you how to use and service the BOSS, familiarize you with all of its parts, and give you helpful tips on plowing snow.

If you have further questions, your local BOSS PLOW DEALER is the person to talk to. They know your plow well and want your complete satisfaction.

Ideal for commercial plowing, this new BOSS snowplow was designed and built with the snow removal professional in mind. Made to outperform the competition, the BOSS has many special features which establish it as a durable high performance snowplow.

MOLDBOARD

Designed to be rugged, and effective, the BOSS moldboard is set to allow for a smooth tripping action while providing a superior scraping capability. The blade has just the right amount of curl so snow rolls ahead and to the side easily-allowing your vehicle to use less power, saving fuel and reducing wear on both the truck and snowplow. On the backside of the moldboard (on Super-Duty Models Only) a unique boxed-in design gives the BOSS incredible strength and minimizes blade twisting common to conventional snowplows.

CUTTING EDGE

A high carbon steel cutting edge provides the durability you will need for a long operating life.

T-FRAME

The BOSS's superior tube steel T-Frame is built to take ongoing punishment without bending or totally failing as so often happens with A-Frame designs.

RAPID-TACH II

There's no more crawling under your truck in the cold wet snow to hook-up this snowplow. Just drive into the plow, raise the latch lever and in seconds you're ready to go.

TIPS ON PLOWING SNOW

- Know the area you are plowing, hidden obstructions such as curbs, sidewalks, pipes, etc. can cause damage to your plow or vehicle.
- Do not let the snow accumulate; always plow with the storm.
- Always wear your seatbelts when plowing snow.
- Occasionally, the plow blade may be in a position where it cuts off air flow to the radiator. While this is a rare occurrence, it can usually be corrected by raising or lowering the plow slightly.
- Always lower the blade when parking your vehicle. This reduces the load on your vehicle's springs and guards against any potential mishap caused by a falling plow.
- Always remember to plow at a safe and prudent speed. The faster you plow the harder you will hit hidden obstructions.
- Do not get body parts between or under the plow and vehicle when servicing or operating the plow.
- When transporting, position plow so as not to block vision or plow headlights.
- Do not change blade positions while traveling.
- Never stack snow with the blade angled more than halfway; damage to the bumper could result.

SNOWPLOW MOUNTING PROCEDURE

- STEP 1**
- Remove the electrical dust covers.
 - Level the coupler mounting jaws so they are parallel with the ground (see note 1 below).
 - Adjust the jackstand so that the top of the coupler jaw is approximately 1/2" higher than the bottom of the pushbeam rod. (See Figure 1)
 - Line up your vehicle and drive slowly straight in until the pushbeam has fully engaged the coupler.
- STEP 2**
- Push the latch handle to the locked position and secure with the safety snap pin provided. If the latch handle does not easily move into position, the push beam has not fully engaged the coupler.
 - Connect the electrical plugs.
- STEP 3**
- Raise the plow
 - Remove the jackstand locking pin, rotate the jackstand to the up position, then insert the locking pin to lock the jack in the up position.
 - Store the removable crank in your vehicle.

NOTE 1: *If you have difficulty adjusting the coupler mounting jaws so they are parallel with the ground, do the following:*

- *Drive up close to the snowplow.*
- *Connect the electrical plugs.*
- *Put the up/down control switch in the down (float) position with the ignition switch on.*
- *Push on the light bracket to level the coupler mounting jaws.*

NOTE 2: *Do not force the coupler latch handle into the lock position. If the handle does not lock easily, the push beam rod is not all the way into the coupler.*

SNOWPLOW REMOVAL PROCEDURE

- STEP 1**
- Raise the plow.
 - Remove the jackstand locking pin, rotate the jackstand to the down position, then insert the locking pin to lock the jack in the down position.
- STEP 2**
- Place the snowplow control button in the float position and drive forward slightly.
 - Push the light bracket towards the vehicle grill to level the coupler mounting jaws.
 - Disconnect the electrical plus and install electrical dust covers.
 - Remove the safety snap pin the pull the latch handle to the unlock position.
- STEP 3**
- Carefully back out of the snowplow.

MAINTENANCE

Your BOSS PLOW is designed for heavy-duty, rugged service with minimal maintenance. To ensure that it gives you the same high performance year after year, use it properly and observe the following maintenance precautions.

INSPECTION

Inspect the following on a regular basis:

- All fasteners, pins, retainers, nuts and bolts for tightness. See Torque Charge (Fig. 8).
- All hydraulic lines and connections for wear and leakage.
- Hydraulic cylinders for leakage, rods for rust or pitting.
- Cutting edge wear.
- Plow shoe wear.
- Hydraulic oil level (CAUTION: DO NOT OVERFILL). Fill hydraulic pump reservoir to within 3/4" from top using Boss High Performance Hydraulic Fluid or equivalent.
- Change the Hydraulic Fluid once each year.

LUBRICATION

Drain the hydraulic reservoir after each season and refill with BOSS High Performance Hydraulic Fluid or equivalent.

Clean the pump switch cable connector and apply dielectric grease at 1 month intervals during the plowing season.

PUTTING PLOW INTO STORAGE

1. Drive the snowplow to a storage site. Follow the normal procedure for dismounting from the plow, being sure to fully level the coupler by pushing the lift tower toward the grill of the vehicle.
2. Disconnect all electrical plugs and coat each connection with dielectric grease. Install all dust caps and plugs provided.
3. Place the Rapid-Tach II" latch handle in the unlocked position then carefully back out of the snowplow.
4. Touch-up any rust spots or chipped paint.
5. Loosen the return springs.
6. Lubricate the coupler mounting jaws (Fig. 1).
7. Push the lift tower forward until the lift cylinders are completely compressed. This will protect the lift cylinders from corrosion.

TAKING PLOW OUT OF STORAGE

1. Check all fasteners for tightness. See Torque Chart (Fig. 8).
2. Check hydraulic hoses for cracks and leaks.
3. Check hydraulic oil level (CAUTION: DO NOT OVERFILL). Fill hydraulic pump reservoir to within 3/4" from top using BOSS High Performance Hydraulic Fluid or equivalent.
4. Tighten springs.
5. Coat each electrical connection with dielectric grease (lights, valve assembly, pump, pump solenoid and battery).

NOTE: *Dielectric grease should be applied at the beginning and end of each season and as required during the season.*

6. Lubricate the coupler mounting jaws (Fig. 1).
7. Push the lift tower away from the blades to prepare the plow for mounting to the vehicle.

WARNING

THE PLOW MAY FUNCTION ERRATICALLY (MOVE SIDE TO SIDE WHEN THE LIFT FUNCTION IS ENGAGED) UNTIL AIR TRAPPED IN THE SYSTEM IS REMOVED. STAND CLEAR OF THE PLOW DURING INITIAL OPERATION.

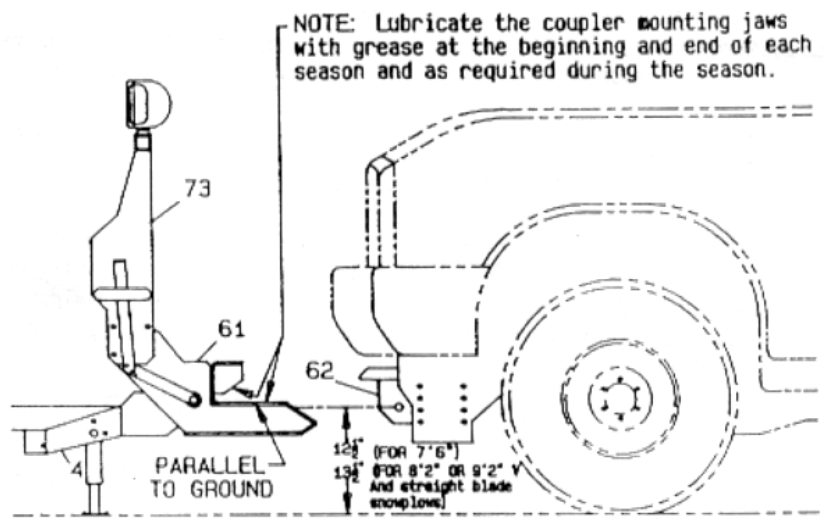


Figure 1

STRAIGHT BLADE HYDRAULIC SYSTEM GENERAL SCHEMATIC

REF. NO.	DESCRIPTION	PART NO.	QTY.
14	Hydraulic Pump	HYD1710	1
15	Hydraulic Valve Assembly (SS)	STB3097	1
17A	Hydraulic Cylinder, Angle (SS)	HYD1703	2
18	Hydraulic Hose (1/4" X 18")	HYD1606	2
18A	Hydraulic Hose (1/4" X 12")	HYD1696	1
18B	Hydraulic Hose (1/4" X 15 1/2")	HYD1695	2
22A	Hydraulic Hose (1/4" X 40")	HYD1702	2
25	Hydraulic Cylinder, Lift	HYD1680	2
25A	Hydraulic Fitting (Tee)	HYD1682	1
31	90 Degree Swivel (SS)	HYD1619	2
32	90 Degree Swivel "O" Ring	HYD1620	4
52	Flow Control Valve	HYD1624	1

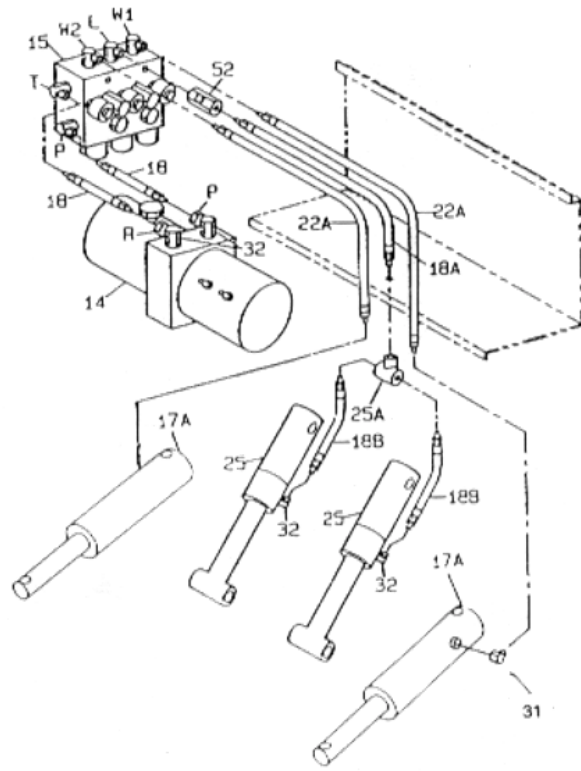


Figure 2

STRAIGHT BLADE HYDRAULIC VALVE ASSEMBLY PARTS LIST

REF. NO.	DESCRIPTION	PART NO.	QTY.
15	Hydraulic Valve Assembly (SS)	STB3097	1
15A	Valve	HYD1637	6
15B	Coil	HYD1638	6
15C	Relief Valve (SS) 3500 PSI	STB3096	2
15D	Check Valve	HYD1640	3
15E	Screen Cartridge	HYD1641	1
15F	Ground Strap	HYD1647	6

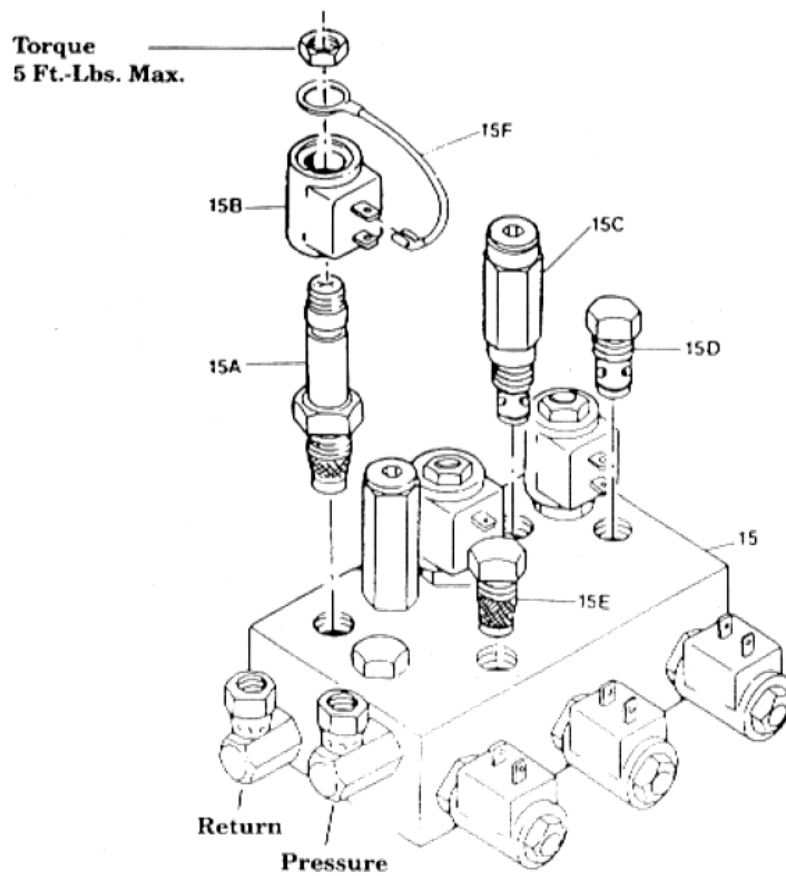
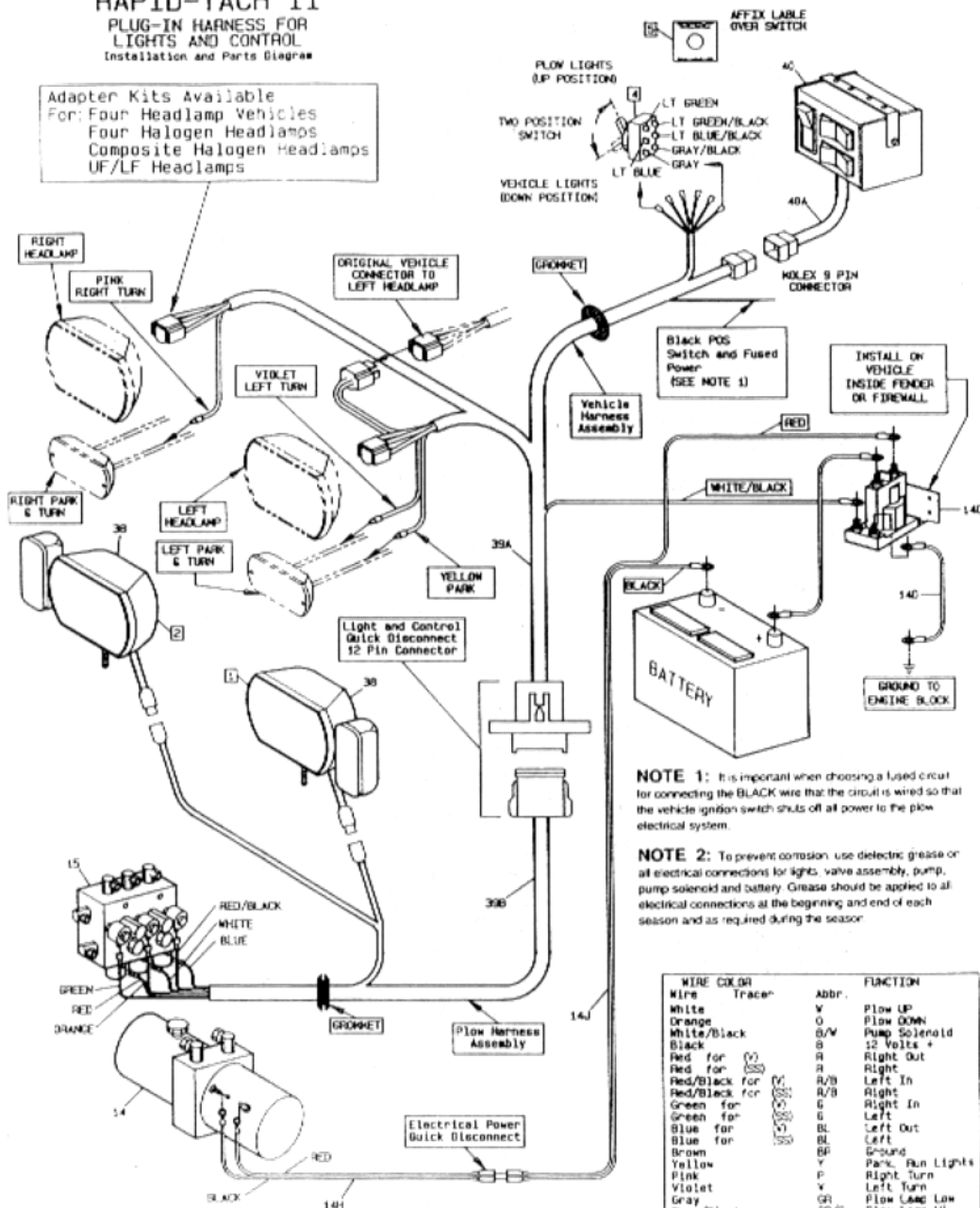


Figure 3

RAPID-TACH II

PLUG-IN HARNESS FOR LIGHTS AND CONTROL
Installation and Parts Diagram

Adapter Kits Available For:
Four Headlamp Vehicles
Four Halogen Headlamps
Composite Halogen Headlamps
UF/LF Headlamps



NOTE 1: It is important when choosing a fused circuit for connecting the BLACK wire that the circuit is wired so that the vehicle ignition switch shuts off all power to the plug electrical system.

NOTE 2: To prevent corrosion use dielectric grease or oil on electrical connections for lights, valve assembly, pump, pump solenoid and battery. Grease should be applied to all electrical connections at the beginning and end of each season and as required during the season.

WIRE COLOR	Tracer	Abbr.	FUNCTION
White		V	Flow UP
Orange		O	Flow DOWN
White/Black		B/W	Pump Solenoid
Black		B	12 Volts +
Red for (V)		R	Right Out
Red for (O)		R	Right In
Red/Black for (V)		R/B	Left In
Red/Black for (O)		R/B	Right In
Green for (V)		G	Left In
Green for (O)		G	Left Out
Blue for (V)		BL	Left
Blue for (O)		BL	Left
Brown		BF	Ground
Yellow		Y	Park, Run Lights
Pink		P	Right Turn
Violet		V	Left Turn
Gray		GR	Flow LAMP Low
Gray/Black		GR/B	Flow LAMP HI
LT Green		LG	Vehicle Lamp Lo
LT Green/Black		LS/B	Vehicle Lamp Hi
LT Blue		LB	Lo Headlamp IN
LT Blue/Black		LB/B	Hi Headlamp IN

Figure 4
11

STRAIGHT BLADE WITH RAPID-TACH II™ HYDRAULIC PUMP SWITCH ASSEMBLY WIRING DIAGRAM

COLOR	FUNCTION	PIN
BLACK	12 VOLTS +	1
ORANGE	PLOW DOWN	2
WHITE	PLOW UP	3
RED	RIGHT	4
GREEN	LEFT	5
BLUE	LEFT	6
RED/BLACK	RIGHT	7
WHITE/BLACK	PUMP SOLENOID	8

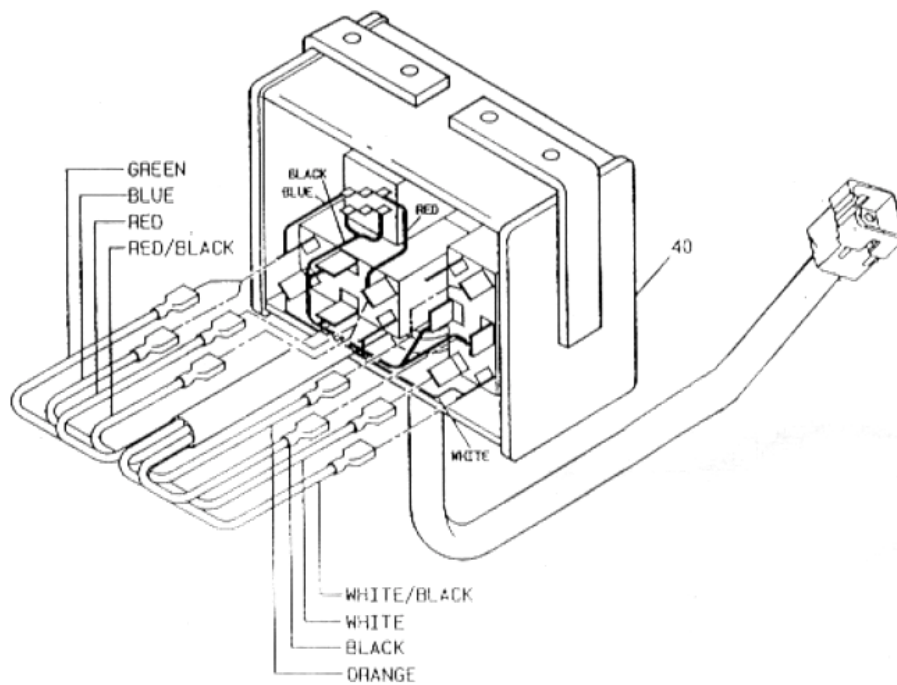


Figure 5

STRAIGHT BLADE WITH RAPID-TACH II™ PARTS LIST

REF. NO.	DESCRIPTION	PART NUMBER
2	Blade (7'6" Standard Duty)	STB3065
2	Blade (7'6" Super Duty)	STB3000
2	Blade (8'0" Super Duty)	STB3001
2	Blade (8'6" Super Duty)	STB3066
4	T-Frame (7'6", 8'0", 8'6" (Straight Blade)	STB3145
4 A	T-Frame Attachment Bar (7'6", 8'0", 8'6" Super Duty)	STB3005
4 A	T-Frame Attachment (7'6", Standard Duty)	STB3070
5	Cutting Edge (7'6" Standard Duty)	STB3071
5	Cutting Edge (7'6" Super Duty)	STB3002
5	Cutting Edge (8'0" Super Duty)	STB3003
5	Cutting Edge (8'6" Super Duty)	STB3072
6	Carriage Bolt Set	BAX0034
	Includes: (10) Carriage Bolts Grade #8 (10) 1/2" Hardened Washers (10) 1/2" Lock Nuts	
10-44-45	Plow Shoe Assembly (Super Duty)	MSC1501
	Includes: (1) Plow Shoe (1" Shaft) (1) Quick Pin 7/16" (20) 1" Flat Washers	
	Plow Shoe Assembly (7'6" Straight Blade Standard Duty Only)	MSC3420
	Includes: (1) Plow Shoe (2) Quick Pin (20) 1" Flat Washers	
14	Hydraulic Pump - Barnes	HYD1710
14 A	Hydraulic Pump Filler Cap - Barnes	HYD1636
14 B	Hydraulic Pump Motor - Barnes	MSC1563
14 C	Hydraulic Pump Solenoid	HYD1633
14 D	Hydraulic Pump Ground Cable	MSC1559
14 H	Ground/Power Cable (60" Long)	HYD1684
14 J	Ground/Power Cable (36" Long)	HYD1690
14 K	Ground/Power Cable Dust Cap/Plug (1-Req'd)	MSC3424
14 L	Hydraulic Reservoir Drain Plug	HYD1712
15	Hydraulic Valve Assembly (Straight Blade)	STB3097
15 A	Hydraulic Lift/Angle Valve	HYD1637
15 B	Hydraulic Valve Coil	HYD1638
15 C	Hydraulic Relief Valve	STB3096
15 D	Hydraulic Check Valve	HYD1640
15 E	Hydraulic Valve Screen Cartridge	HYD1641
15 F	Hydraulic Valve Ground Strap	HYD1647

STRAIGHT BLADE WITH RAPID-TACH II™ PARTS LIST

REF. NO.	DESCRIPTION	PART NO.
17 A	Hydraulic Cylinder (Angle Straight Blade)	HYD1703
18	Hydraulic Hose (1/4" X 18")	HYD1606
18 A	Hydraulic Hose (1/4" x 12")	HYD1696
18 B	Hydraulic Hose (1/4" x 15-1/2")	HYD1695
22 A	Hydraulic Hose (1/4" X 40") (SS)	HYD1702
25	Hydraulic Cylinder (Lift)	HYD1680
25 A	Hydraulic - Tee (Lift)	HYD1682
31	90 Degree Swivel	HYD1619
32	90 Degree Swivel - "O" Ring	HYD1620
33	Trip/Return Spring	MSC1509
37	Blade Guide Set	BAX0005
37 A	Blade Guide Tip	MSC1562
38	Auxiliary Headlight Set	MSC1513
39	Auxiliary Light Harness Assembly Includes: Toggle Switch Connectors	MSC1514
39 A	Light and Control Harness (Vehicle Only) 116" Long	MSC3742
39 B	Light and Control Harness (Plow) 48" Long	MSC3741
40	Hydraulic Pump Switch Assembly-Control Box (SS)	STB3124
41	Rocker Switch - Lift	HYD1622
42	Rocker Switch - Angle	HYD1623
44	Quick Pin - 7/16"	MSC1503
47	Eye Bolt (Super Duty)	HDW1700
47A	Eye Bolt (Standard Duty)	HDW1744
52	Flow Control Valve With Adapter	HYD1624
57	Latch Handle	LTA3555
58	Latch Handle Safety Pin	HDW5509
59	Latch Handle Guide	LTA3566
60	Coupler Latch Pin	LTA3573
61	Coupler Assembly	LPA4340
62	Push Beam Assembly	
62 A	Push Beam Support Plate (RH) Passenger Side	
62 B	Push Beam Support Plate (LH) Driver Side	
67	Shock Absorber (Super Duty)	MSC1517
73	Light Bracket Assembly	LBA4701
73 A	Light Bracket Hydraulic Cover	LBA4360
75 A	Angle Bracket (RH) Passenger Side	
75 B	Angle Bracket (LH) Passenger Side	
80	Electrical Quick Disconnect Mounting Bracket	MSC3421
81	Dielectric Grease (2 Oz. Tube)	MSC3423
82	Plastic End Cap	MSC3481

**STRAIGHT BLADE
WITH RAPID-TACH II™
PARTS LIST**

REF. NO.	DESCRIPTION	PART NO.
101	Power/Ground Cable Bracket	MSC3491
102	1-1/8" Rubber Grommet	MSC3456
103	Jackstand	MSC3754
103 A	Jackstand Crank Handle	MSC3755
104	Weather Cap for Light and Control Harness (Vehicle Side)	MSC3743
105	Jackstand Stop Pin	HDW5513
106	Weather Cap for Light and Control Harness (Plow Side)	MSC3744
107	Jackstand Handle	TRR3744
108	Light Adapter	TFR4351

Troubleshooting Guide

Glossary of Problems:

1. Pump motor does not run.
2. Pump continues to run with switch in neutral.
3. Plow will not lower.
4. Plow will not raise or raises slowly, motor runs.
5. Plow lowers too fast.
6. Oil leaks from cylinders.
7. Battery goes dead with all switches in neutral.
8. Plow lights are dim, will not come on or flicker.
9. Turn signals flash at a rapid rate.
10. Blade trips too easily.
11. Plow does not clean-up snow from low areas.
12. In extremely cold temperatures, the oil in the hydraulic system is thickened, causing slow functioning of the plow.
13. Vehicle overheats with the plow on.
14. Oil running out of fill cap on hydraulic pump.
15. Pump chatters when raising plow or angling.

1.	PROBLEM	CAUSE	REMEDY
	Pump Motor Does Not Run	A. Defective Solenoid B. Defective Pump Motor C. Weak Or Defective Battery D. Bad Electrical Connections E. Defective Up/Down Switch	A. Replace Solenoid B. Replace Pump Motor C. Charge Or Replace Battery D. Tighten Nuts At Connections E. Replace Switch
2.	PROBLEM	CAUSE	REMEDY
	Pump Continues To Run With Switch In Neutral	A. Defective Solenoid B. Defective Switch C. Wiring Short	A. Replace Solenoid B. Replace Switch C. Locate And Repair
3.	PROBLEM	CAUSE	REMEDY
	Plow Will Not Lower	A. Flow Control Valve Closed B. Flow Control Valve Not Installed Properly C. Check Wiring On Valve Block D. Check Wiring On Up/Down Switch E. Defective Up/Down Switch F. Defective Lift Return valve G. Defective Lift Return Coil	A. Open Flow Control Valve B. Arrow On Flow Control Valve Must Point Toward Valve Block C. Wires May Be Reversed D. Wire(s) May Have Come Loose E. Replace Switch F. Replace Valve G. Replace Coil

4.	PROBLEM Plow Will Not Raise Or Raises Slowly, Motor Runs	CAUSE A. Weak Or Defective Battery B. Oil Level Low C. Flow Control Valve Not Installed Properly D. Hydraulic Connection Leak E. Lift Valve Not Opening Properly F. Defective Lift Valve Coil	REMEDY A. Charge Or Replace Battery B. Add Oil (Do Not Overfill) C. Arrow On Flow Control Valve Must Point Toward Valve Block D. Tighten Or Redo Connection E. Replace Valve F. Replace Coil
5.	PROBLEM Plow Lowers Too Fast	CAUSE A. Flow Control Valve Not Installed B. Flow Control Valve Fully Open	REMEDY A. Install Flow Control Valve B. Close Valve To Desired Drop Speed
6.	PROBLEM Oil Leaks From Cylinder(s)	CAUSE A. Loose Packing B. Defective Cylinder	REMEDY A. Tighten Packing 1/5 Turn B. Repack Or Replace Cylinder
7.	PROBLEM Battery Goes Dead With All Switches In Neutral	CAUSE A. Possible Short In Switch(es) B. Possible Short In Wiring C. Possible Short In Valve Coil(s)	REMEDY A. Replace Switch(es) B. Repair Damaged Wire C. Replace Coil(s)
8.	PROBLEM Plow Lights Are Dim, Will Not Come On Or Flicker	CAUSE A. Bad Connection(s) B. Lights Not Properly Grounded	REMEDY A. Repair Connection B. Properly Ground
9.	PROBLEM Turn Signals Flash At A Rapid Rate	CAUSE A. Improper Flasher	REMEDY A. Replace Original Vehicle Flasher With The Heavy Duty Six Lamp Flasher Provided
10.	PROBLEM Blade Trips Too Easily	CAUSE A. Not Enough Tension On Trip Springs	REMEDY A. Add Tension To Trip Springs By Adjusting The Turnbuckle
11.	PROBLEM Plow Does Not Clean-Up Snow From Low Areas	CAUSE A. Up/Down Switch Not In Neutral	REMEDY A. Up/Down Switch Should Be In The Down Position (Float)
12.	PROBLEM In Extremely Cold Temperatures The Oil In The Hydraulic System Is Thickened, Causing Slow Functioning Of The Plow	CAUSE A. Cold Temperatures	REMEDY A. As The System Warms, The Oil Will Thin Out B. Use Boss High Performance Hydraulic Fluid or equivalent
13.	PROBLEM Vehicle Overheats With The Plow On	CAUSE A. Vehicle Coolant Level Low B. Ice And Snow Buildup In Grille C. Defective Radiator Hose(s) D. Insufficient Cooling Fan	REMEDY A. Add Coolant B. Remove Ice And Snow C. Replace Defective Hose(s) D. Install Heavy Duty, Non-Clutch Type Fan

14.	PROBLEM	CAUSE	REMEDY
	Oil Running Out Of Fill Cap On Hydraulic Pump	A. Plowing On Steeply Inclined Terrain B. Too Much Oil C. Hydraulic Pump Not Level	A. Avoid Excessive Inclines Or Change Direction Of Plowing B. Remove Excess Oil C. Level Hydraulic Pump
15.	PROBLEM	CAUSE	REMEDY
	Pump Chatters When Raising Plow Or Extending Wing(s)	A. Hydraulic Oil Low	A. Add Hydraulic Oil Until Chattering Stops. Caution: Only Add Enough Oil To Stop The Chattering - Do Not Overfill



SNOWPLOW SPECIFICATIONS

DESCRIPTION	7'6" STANDARD-DUTY	7'6" SUPER-DUTY	8" SUPER-DUTY	8'6" SUPER-DUTY
Blade Width	7'6"	7'6"	8'	8'6"
Blade Height	27-1/2"	29-1/2"	29-1/2"	29-1/2"
Gauge of Steel	11 Gauge	11 Gauge	11 Gauge	11 Gauge
Cutting Edge (10809 Steel)	3/8" x 6"	1/2" x 6"	1/2" x 6"	1/2" x 6"
Number of Vertical Ribs	7	7	7	7
Plowing Width @ 30 Degrees	78"	78"	83"	88"
Number of Trip Springs	3	3	3	4
Boxed-In Moldboard	No	Yes	Yes	Yes
Hydraulics (Electric)	Under Hood			
Shock Absorber	No	Yes	Yes	yes

GUIDE TO RECOMMENDED ASSEMBLY TORQUE

All Torque Values Are In Foot-Pounds (Ft.-Lb.)



DIA./PITCH	GRADE 5	GRADE 8
1/4 - 20	6	9
5/16 - 18	14	19
3/8 - 16	23	33
7/16 - 14	38	53
1/2 - 13	56	80
9/16 - 12	82	116
5/8 - 11	113	159
3/4 - 10	201	283

* The torque values listed above are based on dry, coated bolts, variables such as oil, or other lubrications may appreciably alter these values and must be taken into consideration.

NOTE: IT IS IMPORTANT THAT ALL FASTENERS BE PROPERLY TORQUED TO ASSURE A SAFE OPERATING PLOW.

FIGURE 8



**TWO YEAR WARRANTY
FOR BOSS SNOWPLOWS MOUNTED ON
LESS THAN 10,000 LB. GVW TRUCKS**

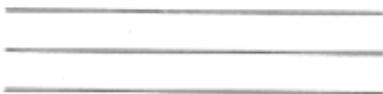
M.J. ELECTRIC, INC. warrants, for a period of two (2) years from the date of delivery to the original consumer, each snowplow manufactured by it to be free from defects in material and workmanship. If within such warranty period, any part thereof is found to be defective, M.J. ELECTRIC, INC. shall, at its option repair or replace the defective part, F.O.B. M.J. ELECTRIC, INC.'S factory. Repair labor and expendable parts such as hoses, plow shoes, cutting edges, pins, nuts, bolts, springs, blade guides, etc. are not covered under this warranty. M.J. ELECTRIC, INC.'S obligation hereunder shall be limited to such repair or replacement and shall be further conditioned upon M.J. ELECTRIC, INC. receiving written notice of any alleged defect within the (10) days after its discovery and, at M.J. ELECTRIC, INC.'S option, the return of the alleged defective part to M.J. ELECTRIC, INC. F.O.B. its factory. Send Defect Notification to: BOSS SNOWPLOW CUSTOMER SERVICE, M.J. ELECTRIC, INC., P.O. BOX 686, IRON MOUNTAIN, MICHIGAN 49801. This warranty shall only apply to new snowplows and shall not apply to snowplows sold as used snowplows or as demonstrators.

The foregoing warranty shall not apply to parts repaired or altered by others than M.J. ELECTRIC, INC. or which shall have been subject to other than normal use or service; negligence; accident; or improper installation, maintenance, care or storage.

THE FOREGOING WARRANTIES ARE EXCLUSIVE AND IN LIEU OF ALL OTHER EXPRESSED AND IMPLIED WARRANTIES (EXCEPT OF TITLE) INCLUDING BUT NOT LIMITED TO THE IMPLIED WARRANTIES OF MERCHANTABILITY AND FITNESS FOR A PARTICULAR PURPOSE.

M.J. ELECTRIC, INC.'S LIABILITY IS EXPRESSLY LIMITED TO THE REPAIR AND REPLACEMENT OF DEFECTIVE PARTS AS HEREIN PROVIDED. M.J. ELECTRIC, INC. SHALL NOT BE LIABLE FOR ANY CONSEQUENTIAL, INCIDENTAL OR CONTINGENT DAMAGES WHATSOEVER. Attachment of M.J. ELECTRIC, INC.'S snowplow to motor vehicles is at the risk and expense of the purchaser. M.J. ELECTRIC, INC. does not assume any liability for any damage to a motor vehicle resulting from the attachment, or from the use of M.J. ELECTRIC, INC.'S snowplow. Some states do not allow exclusion or limitation of incidental or consequential damages, so the above limitation may not apply to you. This warranty gives you specific legal rights, and you may also have other rights which vary from state to state.

M.J. ELECTRIC, INC. RESERVES THE RIGHT UNDER ITS PRODUCT IMPROVEMENT POLICY TO CHANGE CONSTRUCTION OR DESIGN DETAILS AND FURNISH EQUIPMENT WHEN SO ALTERED WITHOUT REFERENCE TO ILLUSTRATIONS OR SPECIFICATIONS.



PLACE
STAMP
HERE

BOSS PRODUCTS
M.J. ELECTRIC, INC.
P.O. Box 788
Iron Mountain, MI 49801

BOSS PRODUCTS
M.J. ELECTRIC, INC.
P.O. Box 788
Iron Mountain, MI 49801

*It is important that you send in this
warranty registration card.*

Please take time now to fill out this card.

*This card must be on file within
30 days of purchase for warranty to be valid.*

IMPORTANT

Keep this section for your record.

Date Purchased: _____

Serial Number: _____

PURCHASED FROM

Name: _____

Address: _____

CUT AND RETURN IMMEDIATELY

IMPORTANT

Warranty Registration - Mail-In This Section

Date Purchased: _____

Dealer: _____

Address: _____

City: _____ State: _____ Zip: _____

Customer: _____

Address: _____

City: _____ State: _____ Zip: _____

Phone: _____ County: _____

Vehicle Make: _____ Model: _____ Year: _____

Serial Number of Plow: _____

APPLICATION

- | | | |
|---|---------------------------------------|--------------------------------------|
| <input type="checkbox"/> Home Owner | <input type="checkbox"/> Municipality | <input type="checkbox"/> Institution |
| <input type="checkbox"/> Plowing Contractor | <input type="checkbox"/> Business | <input type="checkbox"/> Other |