

BOSS PRODUCTS
A Division of Northern Star Industries, Inc.
P.O. Box 787 Iron Mountain MI 49801-0787
www.bosspow.com

**1999 – 2002 CHEVROLET 3/4 TON
RT3 UNDERCARRIAGE
MOUNTING INSTRUCTIONS
(PART NO. LTA03699)**

WARNING

Many newer trucks are now equipped with air bags. DO NOT under any circumstances disable, remove or relocate any sensors or other components related to the operation of the air bags.

Always follow the vehicle manufacturers' recommendations relating to snowplow installation. For recommended vehicle models refer to the BOSS Snowplow Application Chart and Selection Guide.

To comply with Federal Regulations and to assure a safe vehicle, the Front Gross Axle Weight Rating (FGAWR), Rear Gross Axle Weight Rating (RGAWR), and the Gross Vehicle Weight Rating (GAWR) must not be exceeded at any time.

Due to the variety of equipment that can be installed on this vehicle, it is necessary to verify that the Front Gross Axle Weight Rating (FGAWR), Rear Gross Axle Weight Rating (RGAWR), and the Gross Vehicle Weight Rating (GAWR) are not exceeded at any time. This may require weighing the vehicle and adding ballast as necessary. It may also limit payload capacity of the vehicle. It is the operator's responsibility to verify that these ratings are not exceeded.

1999 & NEWER CHEVROLET 3/4 TON RT3 UNDERCARRIAGE MOUNTING INSTRUCTIONS

The mounting procedure outlined below covers the 1999 & NEWER CHEVROLET 3/4 ton 4 x 4 truck. You will need to refer to the illustrations and familiarize yourself with each of the undercarriage components and their relative position to each other. Then proceed as follows:

1. Remove the six mounting bolts being used on the two tow hooks and position the PUSH BEAM SUPPORT PLATES (Ref. 62A and B, Fig. 1) to the front frame rails of the truck. Use the M12-1.75 x 40mm hex head bolts and the M12 lock washers to bolt the PUSH BEAM SUPPORT PLATES through the frame rail to the tow hooks (see Fig. 1). With both support plates in place two slots should be cut in the air dam for clearance of the support plate bottom plates (Ref. 62A and B). Fasteners should only be finger tight.
2. Remove the two rear existing bolts holding the plastic skid plate in place on the vehicle. Use the M10-1.5 x 40mm hex head bolts, the M10 lock washers, the 5/8"-11 x 2" hex head bolts, the 5/8"-11 self locking nuts, the 5/8" lock washer, and the 5/8"-11 nut to mount the ANGLE BRACKET (Ref. 75, Fig. 1) into place on the inside of the skid plate. The skid plate will have to be cut for clearance of the 5/8"-11 nut and 5/8" washer. Bolts should only be finger tight.
3. Bolt the PUSH BEAM (Ref. 62, Fig. 1) in place using the 1/2" - 13 x 1- 1/2" grade 5 hex head bolts, the 1/2"-13 x 1 1/2" grade 8 hex head bolts, and self locking grade 5 and grade C nuts provided. To achieve the proper push beam height the push beam will need to be pushed up into the air dam causing deformation of the plastic. Fasteners should only be finger tight.

NOTE: The proper height adjustment for the PUSH BEAM is approximately 15-½" from the ground to the center of the PUSH BEAM pin-receiving hole (See Figure 2).

4. With all undercarriage parts in place, securely fasten all mounting hardware. It is important that all fasteners be properly torqued (see Fig. 3) to assure a safe operating plow. Retighten all fasteners after 2 hours of plowing.

1999 & NEWER ¾ TON CHEVROLET RT3 UNDERCARRIAGE INSTALLATION PROCEDURE

REF. NO.	DESCRIPTION	PART NO.	QTY.
62	Push Beam Assembly	PBA07909	1
62A	Push Beam Support Plate (RH)	PBA04170	1
62B	Push Beam Support Plate (LH)	PBA04171	1
75	Angle Bracket	LTA04174	1
	FASTENER KIT, CHEVY ¾ TON 99	HDW05582	1
Includes:			
A	½" – 13 x 1- ½" Gr 5 Hex Head Bolt	HDW01728	8
B	½" – 13 Gr B Oval Top Lock Nut	HDW05597	8
C	½" – 13 x 1- ½" Gr 8 Hex Head Bolt (yellow)	HDW05553	4
D	½" – 13 Gr C Oval Top Lock Nut (yellow)	HDW01703	4
E	5/8"-11 x 2" Gr 5 Hex Head Bolt	HDW01731	3
F	5/8"-11 Gr B Oval Top Lock Nut	HDW01709	2
G	M10-1.5 x 40mm Gr 10.9 Hex Head Bolt	HDW05594	2
H	M10 Lock Washer	HDW05595	2
I	M12-1.75 x 40mm Gr 10.9 Hex head Bolt	HDW05584	6
J	M12 Lock Washer	HDW05585	6
K	5/8" Lock Washer	HDW03891	1
L	5/8"-11 Gr 5 Nut	HDW05596	1

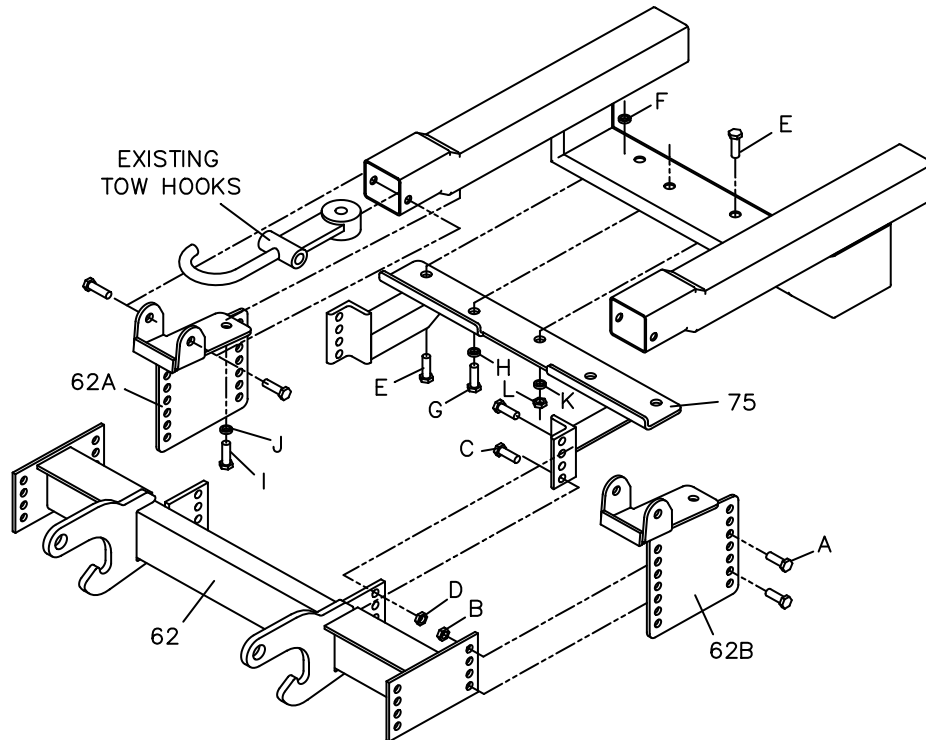


Figure 1

G10431

RECOMMENDED PUSHBEAM HEIGHT

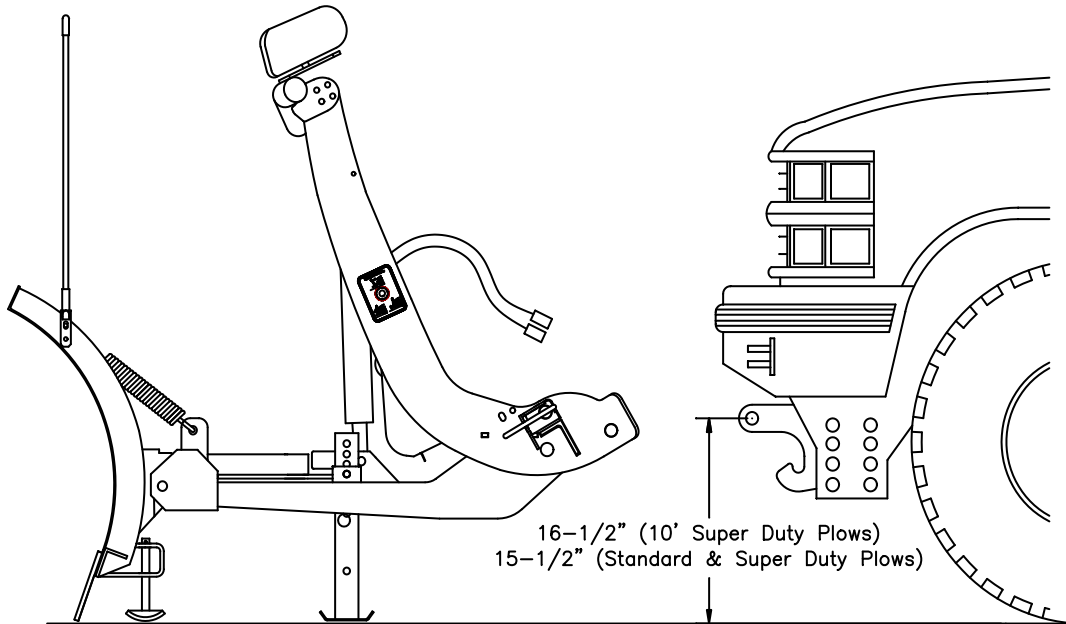


Figure 2

G10155

GUIDE TO RECOMMENDED ASSEMBLY TORQUE



DIAMETER / PITCH	GRADE 5	GRADE 8	GRADE 8.8	GRADE 10.9
1/4-20	6	9		
5/16-18	14	19		
3/8-16	23	33		
7/16-14	38	53		
1/2-13	56	80		
9/16-12	82	116		
5/8-11	113	159		
3/4-10	201	283		
M10 X 1.25			36	
M10 X 1.5				49
M12 X 1.75				71
M14 X 2.0				80

ALL TORQUE VALUES ARE IN FOOT-POUNDS (FT.-LB.)

Figure 3

G10410

* The torque values listed above are based on dry, coated bolts, variables such as oil, or other lubrications may appreciably alter these values and must be taken into consideration.

NOTE: IT IS IMPORTANT THAT ALL FASTENERS BE PROPERLY TORQUED TO ASSURE A SAFE OPERATING PLOW. RE-TIGHTEN ALL FASTENERS AFTER 2 HOURS OF PLOWING.