



A Division of The Toro Company

P.O. Box 787 Iron Mountain, MI 49801-0787

ISO 9001:2008 REGISTERED

bossplow.com

**2011 & NEWER
GENERAL MOTORS 3/4 & 1 TON
RT3 UNDERCARRIAGE
MOUNTING INSTRUCTIONS
(PART NO. LTA09201B)**

WARNING

Many newer trucks are now equipped with air bags. DO NOT under any circumstances disable, remove or relocate any sensors or other components related to the operation of the air bags.

Always follow the vehicle manufacturers' recommendations relating to snowplow installation. For recommended vehicle models refer to the BOSS Snowplow Application Chart and Selection Guide.

To comply with Federal Regulations and to assure a safe vehicle, the Front Gross Axle Weight Rating (FGAWR), Rear Gross Axle Weight Rating (RGAWR), and the Gross Vehicle Weight Rating (GAWR) must not be exceeded at any time.

Due to the variety of equipment that can be installed on this vehicle, it is necessary to verify that the Front Gross Axle Weight Rating (FGAWR), Rear Gross Axle Weight Rating (RGAWR), and the Gross Vehicle Weight Rating (GAWR) are not exceeded at any time. This may require weighing the vehicle and adding ballast as necessary. It may also limit payload capacity of the vehicle. It is the operator's responsibility to verify that these ratings are not exceeded.

2011 & NEWER GENERAL MOTORS 3/4 & 1 TON RT3 UNDERCARRIAGE MOUNTING INSTRUCTIONS

The mounting procedure outlined below covers the 2011 & NEWER General Motors 3/4 & 1 ton 4 x 4 truck. You will need to refer to the illustrations and familiarize yourself with each of the undercarriage components and their relative position to each other. Then proceed as follows:

1. Remove the four mounting bolts being used on the two tow hooks. Remove the four M10 bolts holding sway bar in place leaving the bracket and bushing attached to the bar.
2. Position the PUSH BEAM SUPPORT PLATES (62L and 62R) to front frame rails of truck. Using existing hardware, 1/2"-13x5" grade 5 hex head bolts (G) and 1/2" nylon lock nuts (B) bolt PUSH BEAM SUPPORT PLATES (62L and 6R) through frame rails and tow hooks. Using M10-1.5x40mm hex head bolts (D) and M10 lock washers (E) bolt brackets on sway bar into the rear holes on PUSH BEAM SUPPORT PLATES (62L and 6R) into frame. Be sure bushings stay in bracket. Fasteners should only be finger tight.
3. Thread bolt puller (99) on 1/2"-13x1-1/2" grade 5 hex head bolt (A). Feed bolt puller (99) through frame rail and PUSH BEAM SUPPORT PLATES (62L and 62R). Add 1/2" split lock washers (F), and 1/2"-13 full nuts (H). Fasteners should only be finger tight.
4. Remove and retain lower valance on bumper for customer.

5. Remove the four rear existing bolts holding plastic and metal skid plates. Use M10-1.5 x 40mm hex head bolts (D), and M10 lock washers (E) to mount ANGLE BRACKET (75). ANGLE BRACKET (75) should be next to the cross member with the skid plates on top. Install 5/8" Bolt Bar (101) through top of cross member down through center of ANGLE BRACKET (75). Fasten using 5/8" Split Lock Washer (J), and 5/8"-11 Full Nut (K). Bolts should only be finger tight.

NOTE: The skid plates may have to be notched for clearance of ANGLE BRACKET (75).

6. Bolt PUSH BEAM (75) in place using 1/2"-13x1-1/2" grade 5 hex head bolts (A), 1/2"-13x1-1/2" grade 8 hex head bolts (C), and 1/2" nylon lock nuts (B). To achieve the proper push beam height the push beam will need to be pushed up into the air dam causing deformation of the plastic. Fasteners should only be finger tight.

NOTE: The proper height adjustment for the PUSH BEAM is approximately 15-1/2" from the ground to the center of the PUSH BEAM pin-receiving hole (See Figure 2).

7. With all undercarriage parts in place, securely fasten all mounting hardware. It is important that all fasteners be properly torqued (see Fig. 3) to assure a safe operating plow. Re-tighten all fasteners after 2 hours of plowing.

2011 & NEWER ¾ & 1 TON GENERAL MOTORS RT3 UNDERCARRIAGE INSTALLATION PROCEDURE

REF. NO.	DESCRIPTION	PART NO.	QTY.
62	Push Beam Assembly	PBA04373	1
62R	Push Beam Support Plate (RH)	PBA09203	1
62L	Push Beam Support Plate (LH)	PBA09202	1
75	Angle Bracket	LTA09204	1
99	Bolt Puller	MSC09670	1
101	Bolt Bar 5/8	LTA05316	1
	FASTENER KIT, CHEVY ¾ TON 99	HDW09212	1
Includes:			
A	1/2" – 13 x 1- ½" Gr 5 Hex Head Bolt	HDW01728	10
B	1/2" – 13 Nylon Lock Nut	HDW01748	14
C	1/2" – 13 x 1- ½" Gr 8 Hex Head Bolt	HDW05553	4
D	M10-1.5 x 40mm Gr 10.9 Hex Head Bolt	HDW05594	8
E	M10 Split Lock Washer	HDW05595	8
F	1/2" Split Lock Washer	HDW01732	2
G	1/2" -13 X 5 Gr5 Hex Head Bolt	HDW05499	2
H	1/2" -13 Full Nut	HDW02410	2
J	5/8" Split Lock Washer	HDW03891	1
K	5/8"-11 Full Nut	HDW01777	1

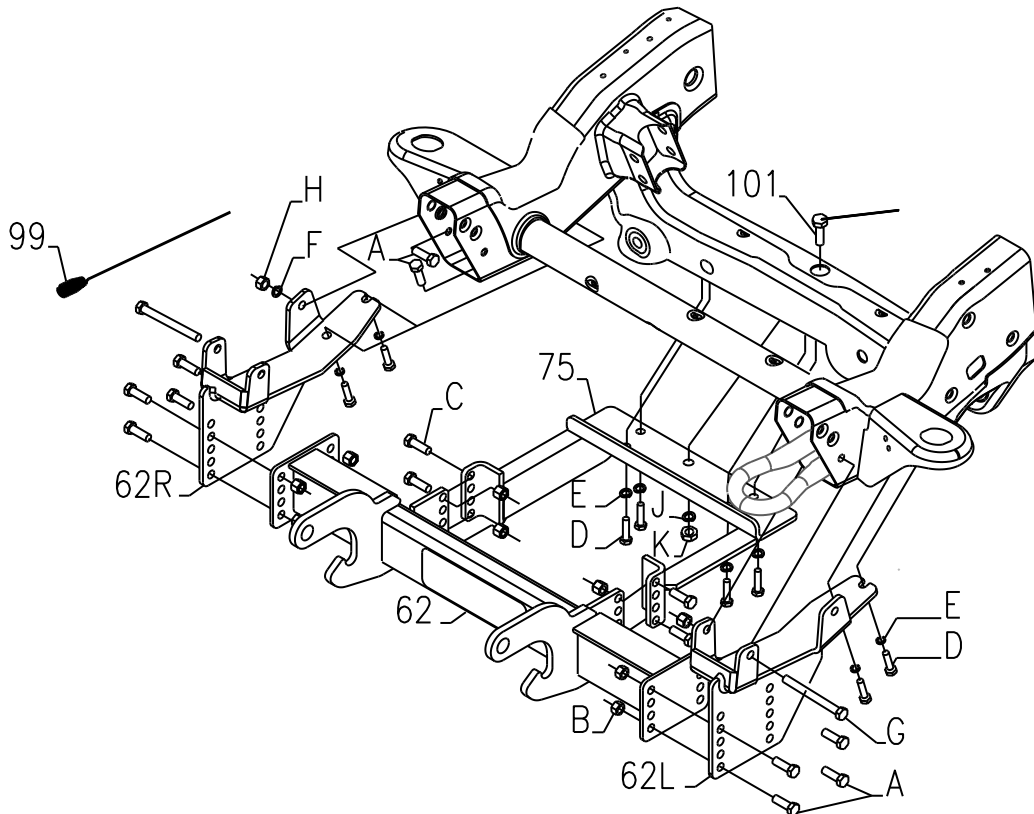


Figure 1

G10621

RECOMMENDED PUSHBEAM HEIGHT

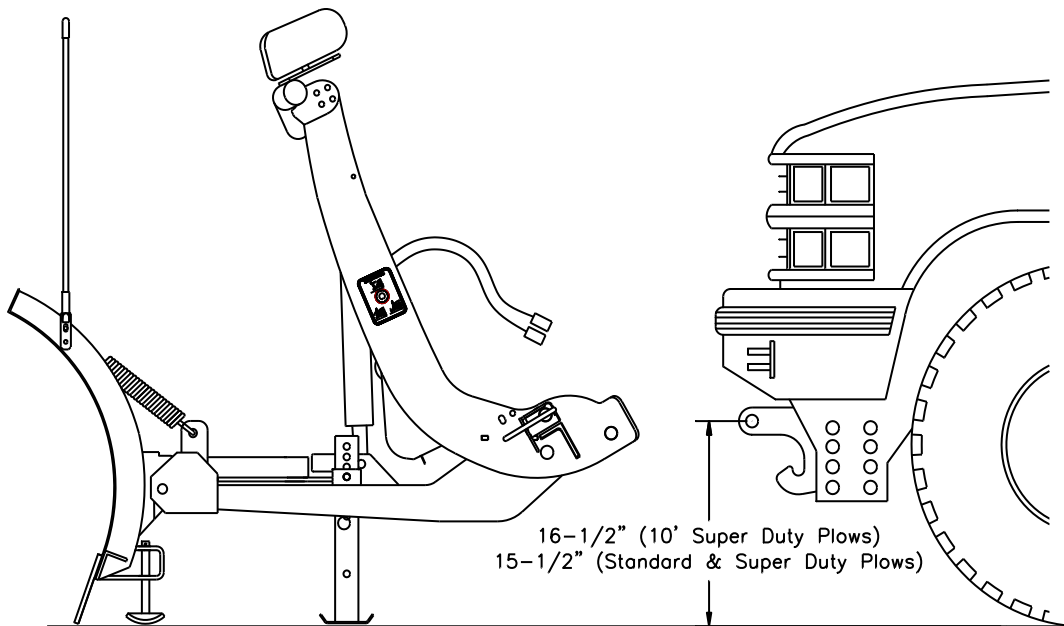


Figure 2

G10155

GUIDE TO RECOMMENDED ASSEMBLY TORQUE



DIAMETER / PITCH	GRADE 5	GRADE 8	GRADE 8.8	GRADE 10.9
1/4-20	6	9		
5/16-18	14	19		
3/8-16	23	33		
7/16-14	38	53		
1/2-13	56	80		
9/16-12	82	116		
5/8-11	113	159		
3/4-10	201	283		
M10 X 1.25			36	
M10 X 1.5				49
M12 X 1.75				71
M14 X 2.0				80

ALL TORQUE VALUES ARE IN FOOT-POUNDS (FT.-LB.)

Figure 3

G10410

* The torque values listed above are based on dry, coated bolts, variables such as oil, or other lubrications may appreciably alter these values and must be taken into consideration.

NOTE: IT IS IMPORTANT THAT ALL FASTENERS BE PROPERLY TORQUED TO ASSURE A SAFE OPERATING PLOW. RE-TIGHTEN ALL FASTENERS AFTER 2 HOURS OF PLOWING.