



A Division of Northern Star Industries, Inc.  
P.O. Box 787 Iron Mountain, MI 49801-0787  
ISO 9001:2008 REGISTERED  
bossplow.com

**2004 & NEWER  
KUBOTA RTV  
RT3 UNDERCARRIAGE  
MOUNTING INSTRUCTIONS  
(PART NO. LTA12560B)**

# WARNING

Always follow the vehicle manufacturers' recommendations relating to system installation.

Due to the variety of equipment that can be installed on this vehicle, it is necessary to verify that the Front Gross Axle Weight Rating (FGAWR), Rear Gross Axle Weight Rating (RGAWR), and the Gross Vehicle Weight Rating (GAWR) are not exceeded at any time. This may require weighing the vehicle and adding ballast as necessary. It may also limit payload capacity of the vehicle. It is the operator's responsibility to verify that these ratings are not exceeded.

## 2004 & NEWER KUBOTA RTV 900, 1140, X900, X1100, & X1120 RT3 UNDERCARRIAGE MOUNTING INSTRUCTIONS

The mounting procedure outlined below covers 2004 & NEWER Kubota RTV 900, 1140, X-900, X-1100, and X-1120 models. You will need to refer to the illustrations and familiarize yourself with each of the undercarriage components and their relative position to each other. Then proceed as follows:

1. Remove the four existing bolts that attach the Front Bumper to the Kubota RTV.
2. Remove the two existing bolts that attach the Front Axle Skid Pan to the frame.
3. Align the holes in the Skid Plate Assembly (75) with the holes in the Front Bumper. Using (4) M12x1.25-45mm bolts (B), attach the Skid Plate. Leave finger tight.
4. Align the holes in the back of the Skid Plate Assembly (75) with the holes in the Front Axle Skid Pan.

**On 2013 and older Kubota 900 and 1140 models:** using (2) M10x1.25-35mm bolts (A), attach the Skid Plate Assembly (75). Leave finger tight.

**On 2014 and newer Kubota X900, X1100, and X1120 models:** using (4) M12x1.25-30mm bolts (G), attach the Skid Plate Assembly (75). Leave finger tight.

5. Using ½"-13 X 1-1/2" Hex Head Bolts (D) and ½" Nylon Lock Nuts (F), attach Mount Brackets (62A & 62B) to the bottom of the Skid Plate Assembly (75).

NOTE: The proper height adjustment for the Pushbeam (62) is approximately 17" from the ground to the center of Pushbeam (62) pin-receiving hole (See Figure 2) for Plow System.

6. Using 3/8"-16 X 1" Hex Head Bolts (C) and 3/8"-16 Nylon Lock Nuts (E), mount Pushbeam Assembly (62) between Mount Brackets (62A & 62B).

7. Using ½"-13 X 1-1/2" Hex Head Bolts (D) and ½"-13 Nylon Lock Nuts, secure the Pushbeam Assembly (62) to Skid Plate Assembly (75).

8. With all undercarriage parts in place, securely fasten all mounting hardware. It is important that all fasteners be properly torqued (See Figure 3) to assure a safe operating plow. Retighten all fasteners after two hours of plowing.

9. Add BOSS decal to front of top tube on Pushbeam Assembly (62).

## 2004 & NEWER KUBOTA RTV 900, 1140, X900, X1100, & X1120 RT3 UNDERCARRIAGE INSTALLATION PROCEDURE

REF. NO.	DESCRIPTION	PART NO.	QTY.
62	Pushbeam Assembly	PBA12535	1
62A	Mount Bracket, Drivers Side	PBA12566	1
62B	Mount Bracket, Passenger Side	PBA12567	1
75	Skid Plate Assembly	LTA12561	1
	FASTENER KIT,UC,UTV,KUBOTA,04+	HDW12568	1
Includes:			
A	M10-1.25x35mm, GR 8.8 Hex Head Bolt	HDW09652	2
B	M12x1.25x45mm, GR 10.9 Hex Head Bolt	HDW10661	4
C	3/8"-16 X 1" GR5 Hex Head Bolt	HDW01717	6
D	1/2"-13X1-1/2" GR5 Hex Head Bolt	HDW01728	8
E	3/8"-16 Nylon Lock Nut	HDW01720	6
F	1/2"-13 Nylon Lock Nut	HDW01748	8
G	M12x1.25x30mm, GR 10.9 Hex Head Bolt	HDW12570	4

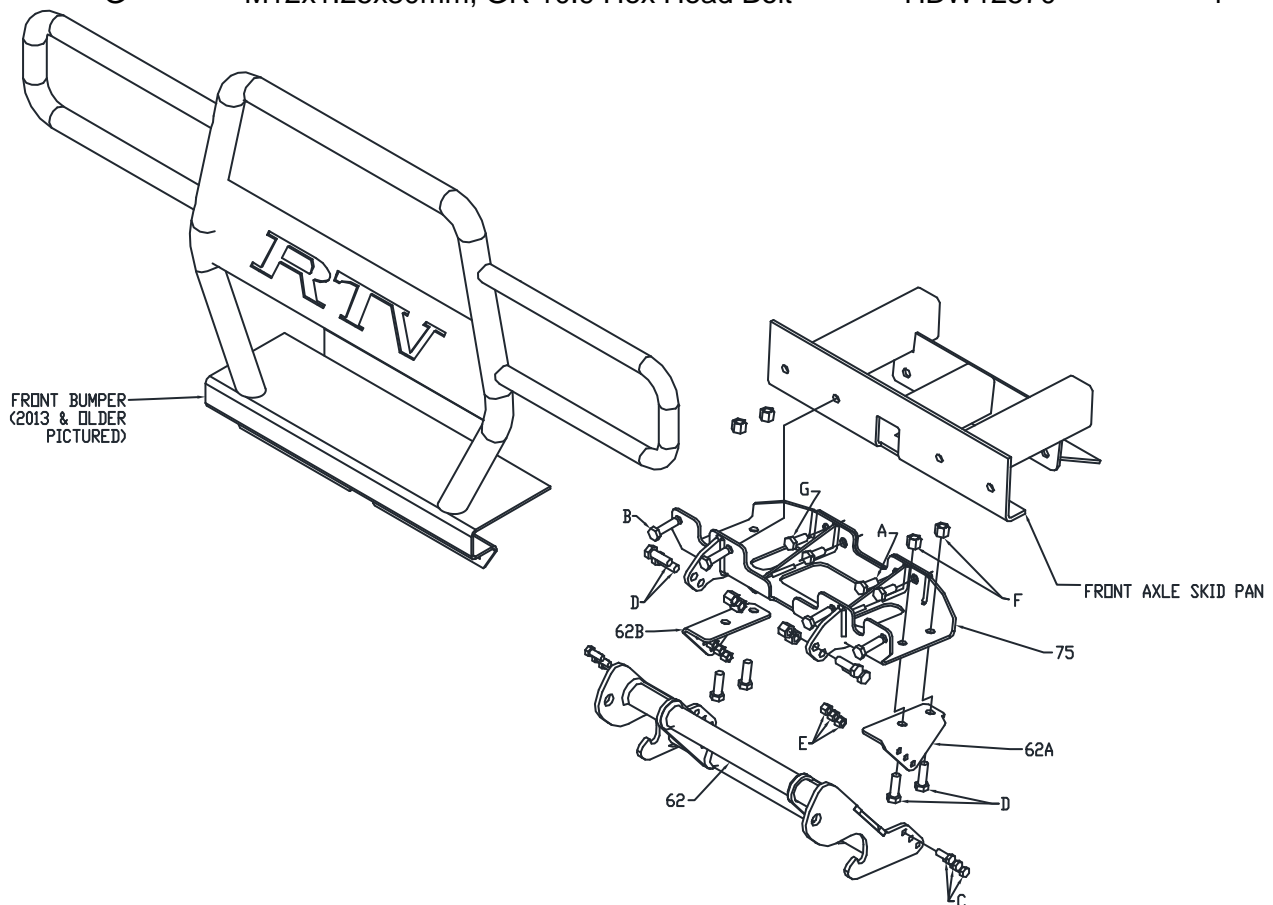


Figure 1

G10618

## RECOMMENDED PUSHBEAM HEIGHT

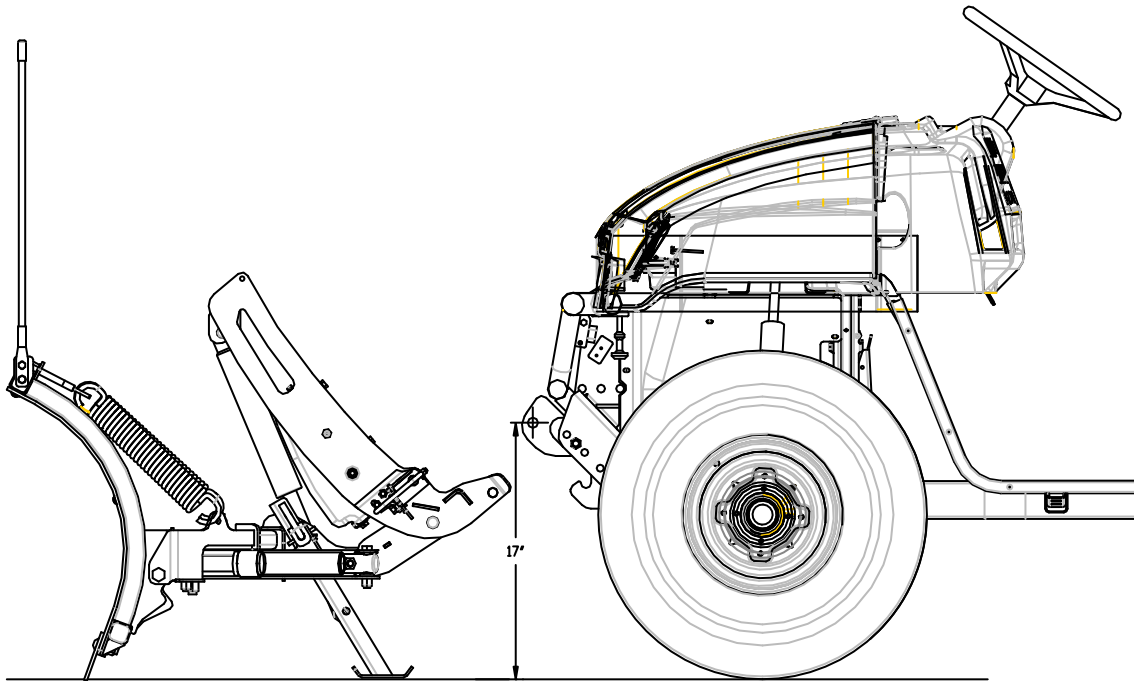


Figure 2

G10502

## GUIDE TO RECOMMENDED ASSEMBLY TORQUE



DIAMETER / PITCH	GRADE 5	GRADE 8	GRADE 8.8	GRADE 10.9
1/4-20	6	9		
5/16-18	14	19		
3/8-16	23	33		
7/16-14	38	53		
1/2-13	56	80		
9/16-12	82	116		
5/8-11	113	159		
3/4-10	201	283		
M10 X 1.25			36	
M10 X 1.5				49
M12 X 1.75				71
M14 X 2.0				80

ALL TORQUE VALUES ARE IN FOOT-POUNDS (FT.-LB.)

Figure 3

G10410

\* The torque values listed above are based on dry, coated bolts, variables such as oil, or other lubrications may appreciably alter these values and must be taken into consideration.

**NOTE:** IT IS IMPORTANT THAT ALL FASTENERS BE PROPERLY TORQUED TO ASSURE A SAFE OPERATING PLOW. RE-TIGHTEN ALL FASTENERS AFTER 2 HOURS OF PLOWING.