

Installation Instructions

⚠ WARNING

CALIFORNIA Proposition 65 Warning

This product contains a chemical or chemicals known to the State of California to cause cancer, birth defects, or reproductive harm.

Safety

- Always follow the vehicle manufacturer's recommendations relating to system installation.
- Due to the variety of equipment that can be installed using the undercarriage, ensure that the gross-vehicle-weight rating (GVWR) is not exceeded at any time. You may need to weigh the vehicle and add ballast or limit the payload of the vehicle to compensate.

Installation

1. Park the machine on level ground, engage the parking brake, shut off the engine, and remove the key.
2. Remove the 4 bolts securing the front skid plate to the bumper.
3. Remove the 2 bolts securing the bottom skid plate to the vehicle frame.
4. Using 2 button-head bolts and 2 locknuts (3/8 inch), loosely attached the plow skid plate and the vehicle front skid plate to the vehicle bumper (Figure 1).

Note: Do not tighten the fasteners at this time.

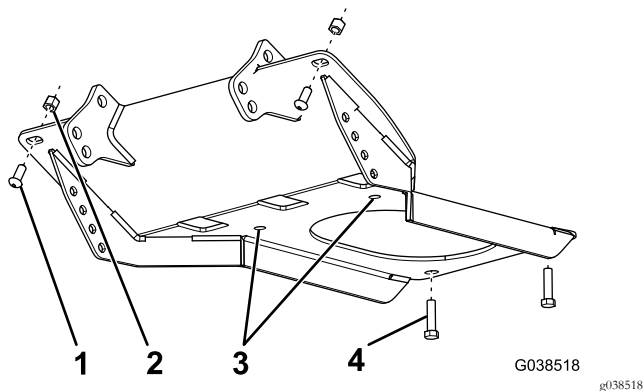


Figure 1

- | | |
|-----------------------|-----------------------|
| 1. Button-head bolt | 3. Drill guide holes. |
| 2. Locknut (3/8 inch) | 4. Existing fastener |

5. Using the 2 previously removed bolts, loosely attach the plow skid plate and vehicle bottom skid plate to the vehicle frame (Figure 1).

Note: Do not tighten the fasteners at this time.

6. Using the plow skid plate as a guide, drill out the 2 holes in the vehicle bottom skid plate to 7/16-inch (Figure 1).
7. Secure the plow skid plate and vehicle bottom skid plate to the vehicle frame using 2 bolts (3/8 x 1-1/2 inch) and 2 locknuts (3/8 inch) as shown in Figure 2.

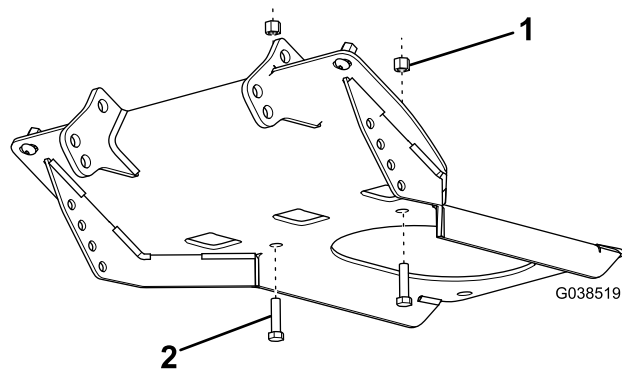
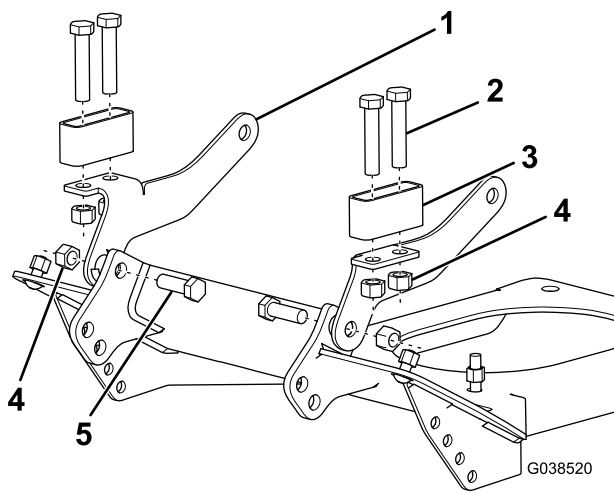


Figure 2

- | | |
|-----------------------|----------------------------|
| 1. Locknut (3/8 inch) | 2. Bolt (3/8 x 1-1/2 inch) |
|-----------------------|----------------------------|

8. Tighten all of the installed fasteners and torque them to 31 N·m (23 ft-lb).
9. Remove the 2 upper bolts and nuts securing the bumper to the vehicle frame.
10. Insert a bumper shim on each side of the bumper.
11. Using the existing bolts and nuts, 2 short 3/8-inch bolts, and 2 top locknuts, secure the mounting brackets to the plow skid plate and vehicle (Figure 3).

Note: Torque the bolts to 31 N·m (23 ft-lb).



g(038520)

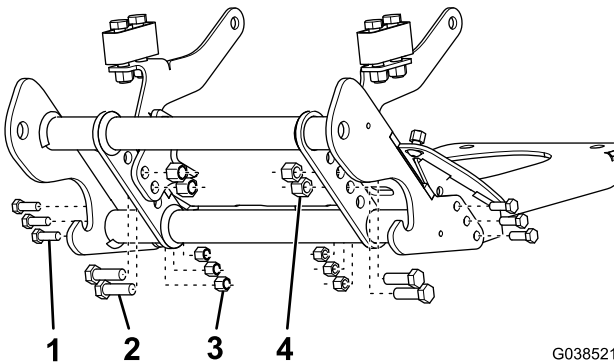
Figure 3

- | | |
|-----------------------|------------------------|
| 1. Mounting bracket | 4. Top locknut |
| 2. Long 1/2-inch bolt | 5. Short 1/2-inch bolt |
| 3. Bumper shim | |

-
12. Secure the bumper shims to the mounting brackets using 4 long 1/2-inch bolts and 4 top locknuts (Figure 3).

Note: Torque the bolts to 76 N·m (56 ft-lb).

13. Mount the pushbeam to the plow skid plate using 4 short 1/2-inch bolts, 4 locknuts (1/2 inch), 6 bolts (3/8 x 1 inch), and 6 locknuts (3/8 inch) as shown in Figure 4.

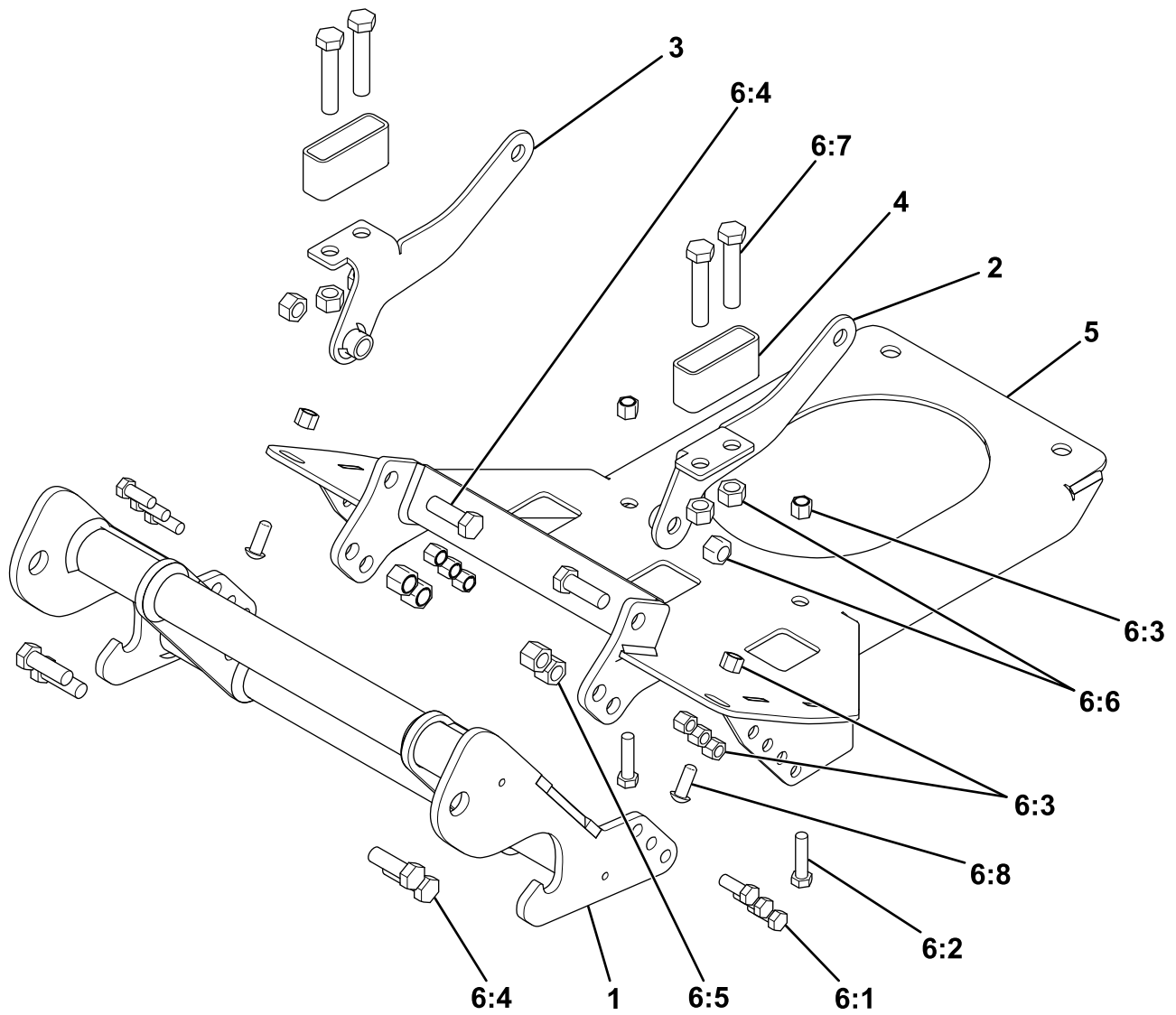


G038521
g(038521)

Figure 4

- | | |
|------------------------|-----------------------|
| 1. Bolt (3/8 x 1 inch) | 3. Locknut (3/8 inch) |
| 2. Short 1/2-inch bolt | 4. Locknut (1/2 inch) |

-
14. Torque the 1/2-inch bolts to 76 N·m (56 ft-lb), and torque the 3/8-inch bolts to 31 N·m (23 ft-lb).
15. Apply the BOSS decal to the top tube on the vehicle bumper.



g206375

Ref.	Part Number	Qty.	Description	Ref.	Part Number	Qty.	Description
1	PBA12535	1	PUSHBEAM ASSEMBLY	6:3	HDW01720	10	3/8"-16 NYLON LOCK NUT
2	PBA12636	1	MOUNT BRACKET, DRIVERS SIDE	6:4	HDW01728	6	1/2"-13X1-1/2" GR5 HEX HEAD BOLT
3	PBA12637	1	MOUNT BRACKET, PASSENGER SIDE	6:5	HDW01748	4	1/2"-13 NYLON LOCK NUT
4	LTA12648	2	BUMPER SHIM	6:6	HDW05597	6	1/2"-13 OVAL TOP LOCK NUT
5	LTA12641	1	SKID PLATE ASSEMBLY	6:7	HDW05917	4	1/2"-13X2-1/2" GR5 HEX HEAD BOLT
6	HDW12639	1	FASTENER KIT, UC, UTV, JD XUV, 2011+	6:8	HDW07502	2	3/8"-16 X 1" GR5 BUTTON HEAD BOLT
6:1	HDW01717	6	3/8"-16 X 1" GR5 HEX HEAD BOLT				
6:2	HDW01719	2	3/8"-16 X 1-1/2" GR5 HEX HEAD BOLT				

BOSS
S N O W P L O W