

▲ WARNING

CALIFORNIA Proposition 65 Warning

This product contains a chemical or chemicals known to the State of California to cause cancer, birth defects, or reproductive harm.

Installation

1. Park the machine on level ground, engage the parking brake, shut off the engine, and remove the key.
2. Remove the 4 bolts securing the lower part of the vehicle bumper to the vehicle frame.

Note: Leave the bumper in place.

3. Secure the plow skid plate to the vehicle frame through the holes from the previous step using 4 bolts (3/8 inch) and 4 locknuts (3/8 inch), and leave the fasteners finger-tight (Figure 1).

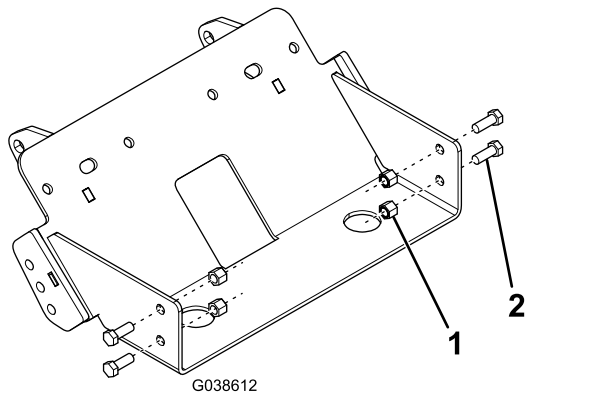


Figure 1

1. Locknut (3/8 inch)
2. Bolt (3/8 inch)

4. Using the plow skid plate as a guide, clamp the vehicle bumper to the plow skid plate and drill out the 4 holes shown in Figure 1 to 7/16-inch.

Note: Ensure that you drill through the correct end of the slots.

5. Secure the angle brackets to the vehicle frame using 4 bolts (5/16 inch) and 4 locknuts (5/16 inch) and leave the fasteners finger-tight (Figure 2).

Safety

- Always follow the vehicle manufacturer's recommendations relating to system installation.
- Due to the variety of equipment that you can install using the undercarriage, ensure that the gross-vehicle-weight rating (GVWR) is not exceeded at any time. You may need to weigh the vehicle and add ballast or limit the payload of the vehicle to compensate.

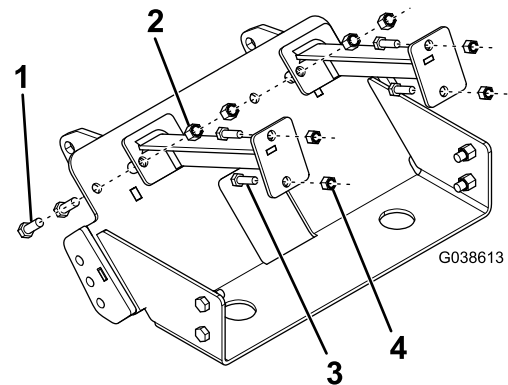


Figure 2

1. Bolt (3/8 inch)
2. Locknut (3/8 inch)
3. Bolt (5/16 inch)
4. Locknut (5/16 inch)

6. Secure the angle brackets to the vehicle bumper and plow skid plate using 4 bolts (3/8 inch) and 4 locknuts (3/8 inch) and leave the fasteners finger-tight (Figure 2).
7. Torque the 3/8-inch bolts to 31 N·m (23 ft-lb) and the 5/16-inch bolts to 19 N·m (14 ft-lb).
8. Mount the pushbeam to the plow skid plate using 4 bolts (1/2 inch), 4 locknuts (1/2 inch), 4 bolts (3/8 inch), and 4 locknuts (3/8 inch) as shown in Figure 3.

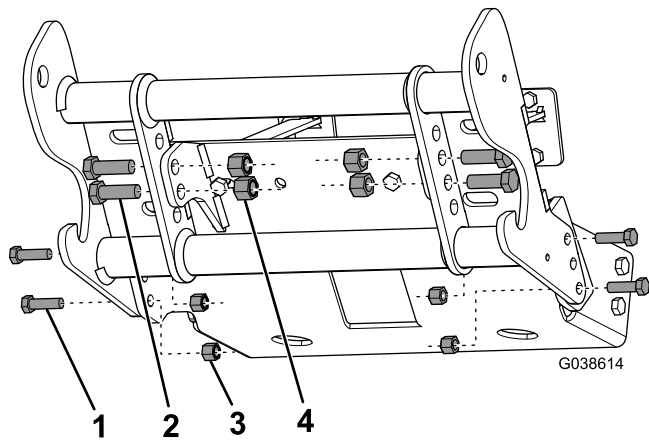
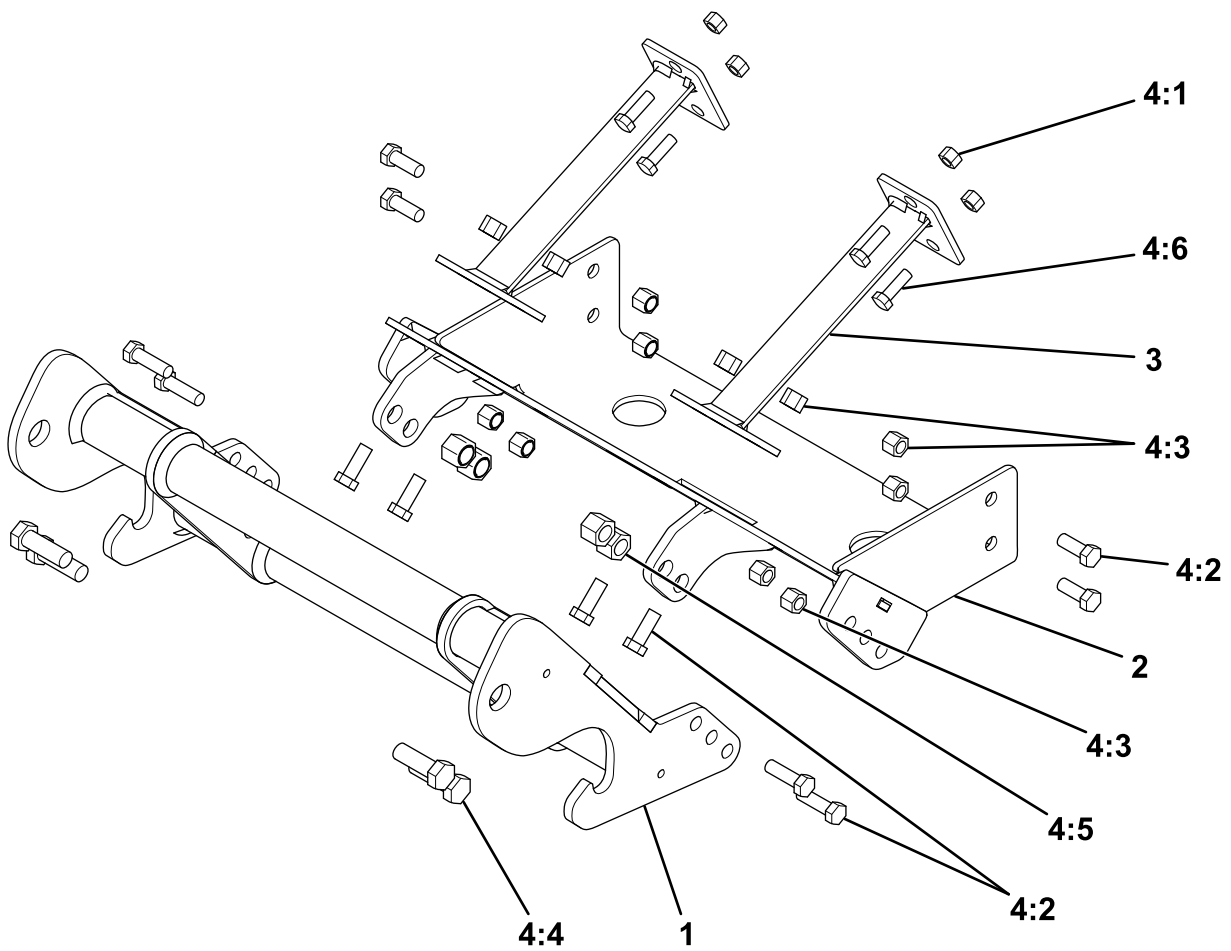


Figure 3

g038614

- | | |
|--------------------|-----------------------|
| 1. Bolt (3/8 inch) | 3. Locknut (3/8 inch) |
| 2. Bolt (1/2 inch) | 4. Locknut (1/2 inch) |
-
9. Torque the 1/2-inch bolts to 76 N·m (56 ft-lb), and torque the 3/8-inch bolts to 31 N·m (23 ft-lb).
10. Apply the BOSS decal to the top tube on the pushbeam.



g206569

Ref.	Part Number	Qty.	Description
1	PBA12535	1	PUSHBEAM ASSEMBLY
2	LTA12754	1	SKIDPLATE ASSEMBLY
3	LTA12758	2	ANGLE BRACKET ASSEMBLY
4	HDW12752	1	FASTENER KIT, UC, UTV, CUB CADET
4:1	HDW01714	4	NUT, 5/16-18, NYL INS, YZN
4:2	HDW01717	12	HHCS, 3/8-16 X 1 NC GR5 PLT
4:3	HDW01720	12	NUT, 3/8-16, NYL INS, YZN
4:4	HDW01728	4	HHCS, 1/2-13 X 1-1/2, NC, GR5, YZN
4:5	HDW01748	4	NUT, 1/2-13, NYL INS, YZN
4:6	HDW01713	4	HHCS, 5/16-18 X 1, NC, GR5, YZN

BOSS
S N O W P L O W