

**SNOWPLOW**

®

BOSS PRODUCTS

A Division of Northern Star Industries, Inc.  
P.O. Box 787 Iron Mountain MI 49801-0787  
[www.bosspow.com](http://www.bosspow.com)

**2009 & NEWER  
POLARIS SPORTSMAN 550/850  
ATV UNDERCARRIAGE  
MOUNTING INSTRUCTIONS  
(PART NO. LTA13534)**

# WARNING

Always follow the vehicle manufacturers' recommendations relating to system installation.

Due to the variety of equipment that can be installed on this vehicle, it is necessary to verify that the Gross Vehicle Weight Rating (GVWR) is not exceeded at any time. This may require weighing the vehicle and adding ballast as necessary. It may also limit payload capacity of the vehicle. It is the operator's responsibility to verify that these ratings are not exceeded.

## 2009 & NEWER POLARIS SPORTSMAN 550/850 ATV UNDERCARRIAGE MOUNTING INSTRUCTIONS

The mounting procedure outlined below covers 2009 & Newer Polaris Sportsman 550 & 850 models. You will need to refer to the illustrations and familiarize yourself with each of the undercarriage components and their relative position to each other. Then proceed as follows:

1. Remove four bolts from vehicle front lower plastic cover.
2. If equipped, remove factory winch and mount. Remount winch and fairlead to Front Assembly (1).
3. Using four 3/8"-16 X 1-1/4" Carriage bolts (B), and 3/8"-16 Nylon Lock Nuts (C), loosely attach Front Assembly (1) to frame using winch mount location. Fasteners should be finger tight.
4. Position Rear Assembly (3) under frame and loosely attach using four 3/8"-16 X 1-1/4"ID X 2-1/4" U-Bolts (A) and 3/8"-16 Nylon Lock Nuts (C). See **Figure 1** for approximate position of Rear Assembly on frame.
5. Attach Mid Assembly under vehicle using six 3/8"-16 X 1-1/4" Carriage bolts (B) and insert two 3/8"-16 X 1-1/4"ID X 2-1/4" U-Bolts (A) through Front Asm (1) and Mid Asm (2). Secure with 3/8"-16 Nylon Lock Nuts (C).
6. Tighten all fasteners to recommended torque found in **Figure 3**.
7. Replace vehicle lower front plastic cover with original fasteners.

## 2009 & NEWER POLARIS SPORTSMAN 550/850 ATV UNDERCARRIAGE INSTALLATION PROCEDURE

REF. NO.	DESCRIPTION	PART NO.	QTY.
1	Front Assembly, Sportsman 550/850 09+	LTA13535	1
2	Mid Assembly, Sportsman 550/850 09+	LTA13536	1
3	Rear Assembly, Sportsman 550/850 09+	LTA13537	1
	Hardware Kit, UC, Sportsman 550/850 09+	HDW13651	1
Includes:			
A	3/8"-16 X 1-1/4"IDX2-1/4" U-Bolt	HDW13649	6
B	3/8"-16X1-1/4" Carriage Bolt	HDW05576	10
C	3/8"-16 Nylon Lock Nut	HDW01720	22

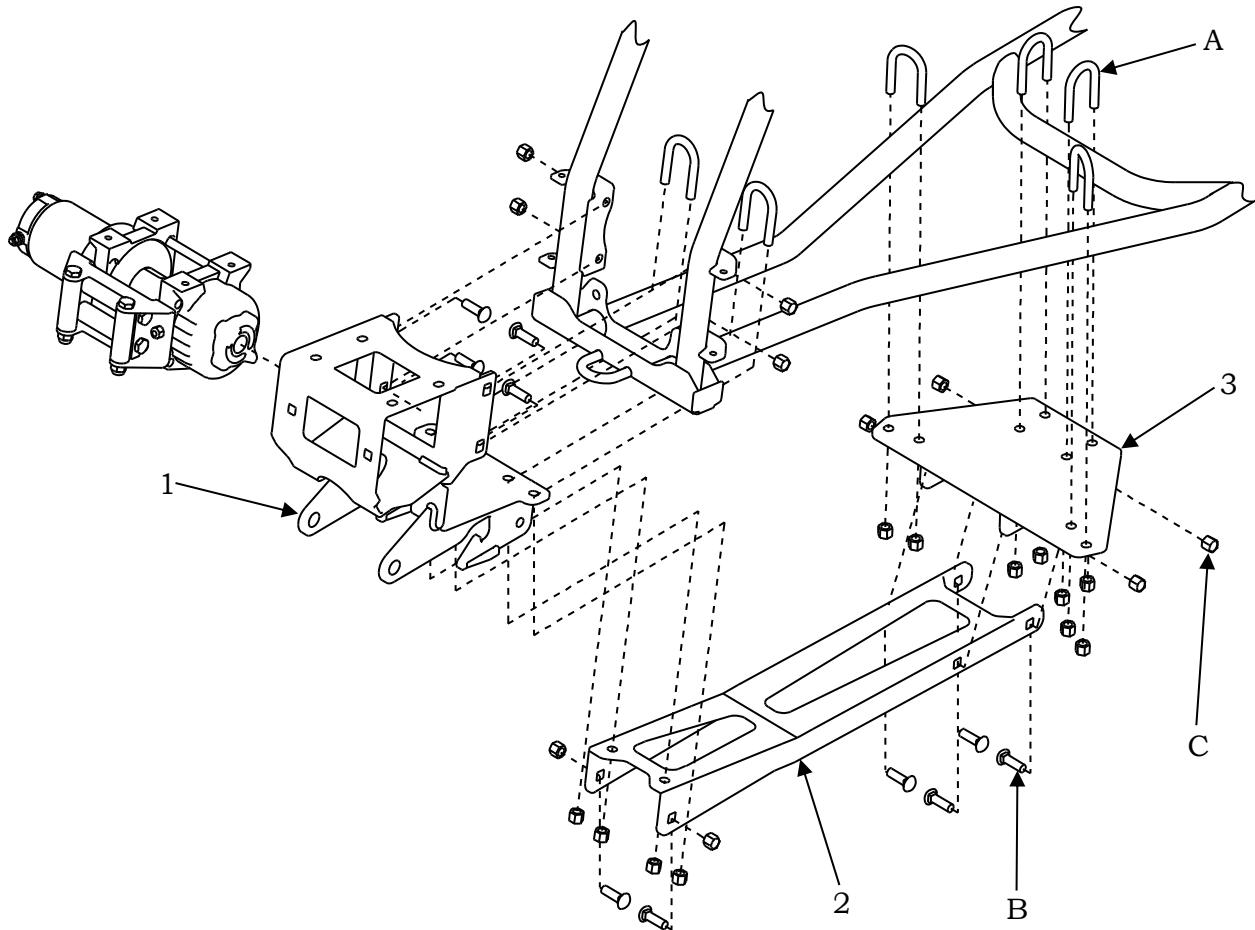


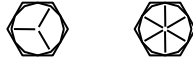
Figure 1

G10729

## RECOMMENDED SUSPENSION SETTINGS

- Increase preload of front springs to highest setting. See manufacturer's specifications for proper adjustment procedure.

### GUIDE TO RECOMMENDED ASSEMBLY TORQUE



DIAMETER / PITCH	GRADE 5	GRADE 8	GRADE 8.8	GRADE 10.9
1/4-20	6	9		
5/16-18	14	19		
3/8-16	23	33		
7/16-14	38	53		
1/2-13	56	80		
9/16-12	82	116		
5/8-11	113	159		
3/4-10	201	283		
M10 X 1.25			36	
M10 X 1.5				49
M12 X 1.75				71
M14 X 2.0				80

ALL TORQUE VALUES ARE IN FOOT-POUNDS (FT.-LB.)

**Figure 3**

G10410

\* The torque values listed above are based on dry, coated bolts, variables such as oil, or other lubrications may appreciably alter these values and must be taken into consideration.

**NOTE:** IT IS IMPORTANT THAT ALL FASTENERS BE PROPERLY TORQUED TO ASSURE A SAFE OPERATING PLOW. RE-TIGHTEN ALL FASTENERS AFTER 2 HOURS OF PLOWING.