



A Division of Northern Star Industries, Inc.
P.O. Box 787 Iron Mountain, MI 49801-0787
ISO 9001:2008 REGISTERED
bossplow.com

2005 & NEWER SUZUKI KINGQUAD ATV UNDERCARRIAGE MOUNTING INSTRUCTIONS (PART NO. LTA13690)

WARNING

Always follow the vehicle manufacturers' recommendations relating to system installation.

Due to the variety of equipment that can be installed on this vehicle, it is necessary to verify that the Gross Vehicle Weight Rating (GVWR) is not exceeded at any time. This may require weighing the vehicle and adding ballast as necessary. It may also limit payload capacity of the vehicle. It is the operator's responsibility to verify that these ratings are not exceeded.

2005 & NEWER SUZUKI KINGQUAD ATV UNDERCARRIAGE MOUNTING INSTRUCTIONS

The mounting procedure outlined below covers 2005 & Newer Suzuki KingQuad models. You will need to refer to the illustrations and familiarize yourself with each of the undercarriage components and their relative position to each other. Then proceed as follows:

1. Remove plastic front bumper from vehicle.
2. Position Skid Plate Assembly (1) in same orientation as previously removed plastic.
3. Using two 5/16"-18 X 1" Hex Head Cap Screws (A), two 5/16"-18 Nylon Lock Nuts (B), and two 5/16" Flat Washers (C), assemble Skid Plate Assembly (1) to vehicle front bumper (all fasteners should be finger tight).
4. Mark eight holes in bottom of Skid Plate Assembly (1) on vehicle's plastic skid plate.
5. Remove Skid Plate Assembly (1).
6. Drill previously marked 8 holes in vehicle's plastic skid plate using a 7/16" drill bit.
7. Assemble four 3/8"-16 x 1-1/4" ID x 2-1/4" U-Bolts (F) to frame tubes of vehicle through previously drilled holes with thread pointing down
8. Using two 5/16"-18 X 1" Hex Head Cap Screws (A), two 5/16"-18 Nylon Lock Nuts (B), and two 5/16" Flat Washers (C), three 3/8"-16 X 1" Hex Head Cap Screws, and eleven 3/8"-16 Nylon Lock Nuts (E), assemble Skid Plate Assembly (1) to vehicle front bumper and previously installed 3/8"-16 x 1-1/4" ID x 2-1/4" U-Bolts (F).
9. Tighten all fasteners to recommended torque found in **Figure 2**.

2005 & NEWER SUZUKI KINGQUAD ATV UNDERCARRIAGE INSTALLATION PROCEDURE

REF. NO.	DESCRIPTION	PART NO.	QTY.
1	Skid Plate Assembly, Suzuki KingQuad	LTA13690	1
	Fastener Kit, UC, Suzuki KingQuad	HDW13689	1
Includes:			
A	5/16"-18 x 1" GR5 Hex Head Bolt	HDW01713	2
B	5/16"-18 Nylon Lock Nut	HDW01714	2
C	5/16" Flat Washer	HDW12719	2
D	3/8"-16 x 1" GR5 Hex Head Bolt	HDW01717	3
E	3/8"-16 Nylon Lock Nut	HDW01720	11
F	3/8"-16 x 1-1/4" ID x 2-1/4" U-Bolt	HDW13649	4

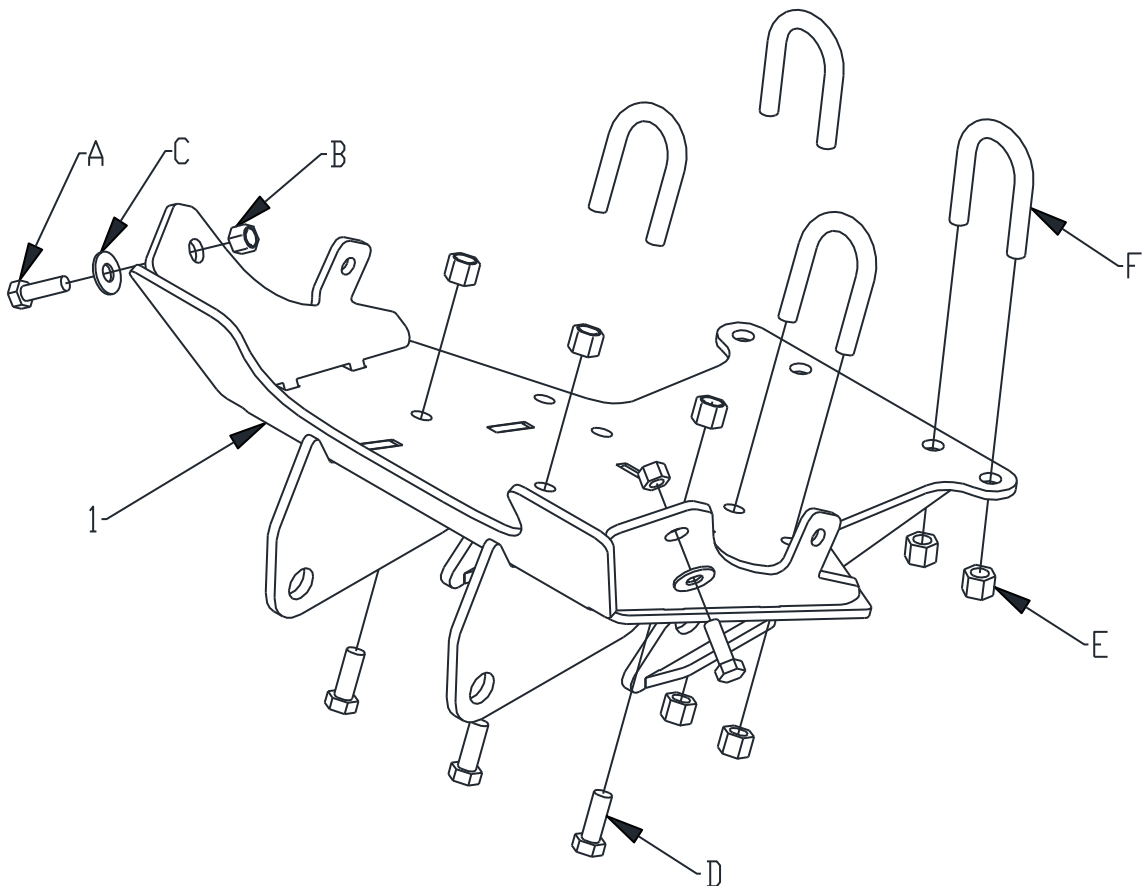


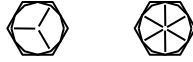
Figure 1

G10855

RECOMMENDED SUSPENSION SETTINGS

- Increase preload of front springs to highest setting. See manufacturer's specifications for proper adjustment procedure.

GUIDE TO RECOMMENDED ASSEMBLY TORQUE



DIAMETER / PITCH	GRADE 5	GRADE 8	GRADE 8.8	GRADE 10.9
1/4-20	6	9		
5/16-18	14	19		
3/8-16	23	33		
7/16-14	38	53		
1/2-13	56	80		
9/16-12	82	116		
5/8-11	113	159		
3/4-10	201	283		
M10 X 1.25			36	
M10 X 1.5				49
M12 X 1.75				71
M14 X 2.0				80

ALL TORQUE VALUES ARE IN FOOT-POUNDS (FT.-LB.)

Figure 2

G10410

* The torque values listed above are based on dry, coated bolts, variables such as oil, or other lubrications may appreciably alter these values and must be taken into consideration.

NOTE: IT IS IMPORTANT THAT ALL FASTENERS BE PROPERLY TORQUED TO ASSURE A SAFE OPERATING PLOW. RE-TIGHTEN ALL FASTENERS AFTER 2 HOURS OF PLOWING.