



A Division of Northern Star Industries, Inc.
P.O. Box 787 Iron Mountain, MI 49801-0787
ISO 9001:2008 REGISTERED
bossplow.com

**2012 & NEWER
JOHN DEERE GATOR XUV 550
UTV UNDERCARRIAGE
MOUNTING INSTRUCTIONS
(PART NO. LTA12740)**

WARNING

Always follow the vehicle manufacturers' recommendations relating to system installation.

Due to the variety of equipment that can be installed on this vehicle, it is necessary to verify that the Gross Vehicle Weight Rating (GVWR) is not exceeded at any time. This may require weighing the vehicle and adding ballast as necessary. It may also limit payload capacity of the vehicle. It is the operator's responsibility to verify that these ratings are not exceeded.

2012 & NEWER JOHN DEERE GATOR XUV 550 UTV UNDERCARRIAGE MOUNTING INSTRUCTIONS

The mounting procedure outlined below covers 2012 & Newer John Deere Gator XUV 550 models. You will need to refer to the illustrations and familiarize yourself with each of the undercarriage components and their relative position to each other. Then proceed as follows:

1. Position Driver Side Assembly (2) in front of vehicle frame on driver side. Align upper mount hole with lower hole in vertical plate on vehicle frame. Refer to **Figure 1** for reference. Loosely attach one 3/8"-16 x 1-1/4" GR5 Hex Head Bolt (B), 3/8" Flat Washer (C), 3/8" Thick Flat Washer (E), and 3/8"-16 Nylon Lock Nut (D). Place Thick Flat Washer (E) between Driver Side Assembly (2) and vertical plate on vehicle frame, use as a spacer.

Note: DO NOT USE 3/8" Thick Flat Washers (E) if vehicle is already equipped with John Deere OEM Winch/Tow Hook/Front Receiver Assembly.

2. Position Passenger Side Assembly (3) in front of vehicle frame on passenger side. Align upper mount hole with lower hole in vertical plate on vehicle frame. Refer to **Figure 1** for reference. Loosely attach one 3/8"-16 x 1-1/4" GR5 Hex Head Bolt (B), 3/8" Flat Washer (C), 3/8" Thick Flat Washer (E), and 3/8"-16 Nylon Lock Nut (D). Place Thick Flat Washer (E) between Passenger Side Assembly (3) and vertical plate on vehicle frame, use as a spacer.
3. Position Skid Plate Assembly (1) under front of vehicle frame. Align upper mount holes with holes in frame and lower mount holes with Driver Side Assembly (2) and Passenger Side Assembly (3). Refer to **Figure 1** for reference. Loosely attach using four 3/8"-16 x 1-1/4" GR5 Hex Head Bolts (B), 3/8" Flat Washers (C), and 3/8"-16 Nylon Lock Nuts (D).
4. Tighten all fasteners to recommended torque found in **Figure 2**.
5. Drill through four holes in bottom of Skid Plate Assembly (1) through vehicle's frame.
6. Place two Support plates (4) on top vehicle frame aligning them with the corresponding mount holes previously drilled in frame. Loosely attach using four 3/8"-16 x 4" GR5 Hex Head Bolts (A), eight 3/8" Flat Washers (C), and four 3/8"-16 Nylon Lock Nuts (D).
7. Tighten all fasteners to recommended torque found in **Figure 2**.

2012 & NEWER JOHN DEERE GATOR XUV 550 UTV UNDERCARRIAGE INSTALLATION PROCEDURE

REF. NO.	DESCRIPTION	PART NO.	QTY.
1	Skid Plate Assembly, John Deere XUV 550 12+	LTA13833	1
2	Driver Side Assembly, John Deere XUV 550 12+	LTA13841	1
3	Passenger Side Assembly, John Deere XUV 550 12+	LTA13842	1
4	Support Plate, John Deere XUV 550 12+	LTA13838	2
	Fastener Kit, UC, John Deere XUV 550 12+	HDW13846	1
Includes:			
A	3/8"-16 x 4" GR5 Hex Head Bolt	HDW13848	4
B	3/8"-16 x 1-1/4" GR5 Hex Head Bolt	HDW01771	6
C	3/8" Flat Washer	HDW01733	14
D	3/8"-16 Nylon Lock Nut	HDW01720	10
E	3/8" Thick Flat Washer	HDW13849	2

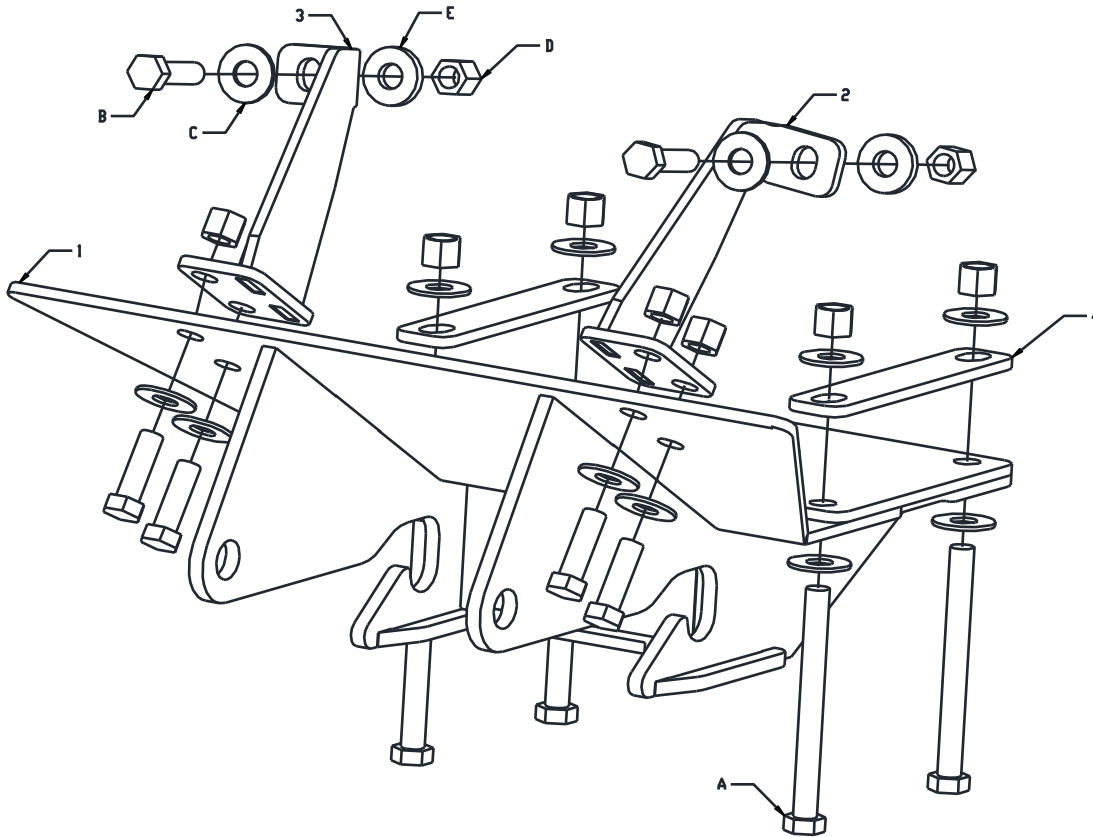


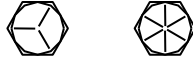
Figure 1

G10847

RECOMMENDED SUSPENSION SETTINGS

- Increase preload of front springs to highest setting. See manufacturer's specifications for proper adjustment procedure.

GUIDE TO RECOMMENDED ASSEMBLY TORQUE



DIAMETER / PITCH	GRADE 5	GRADE 8	GRADE 8.8	GRADE 10.9
1/4-20	6	9		
5/16-18	14	19		
3/8-16	23	33		
7/16-14	38	53		
1/2-13	56	80		
9/16-12	82	116		
5/8-11	113	159		
3/4-10	201	283		
M10 X 1.25			36	
M10 X 1.5				49
M12 X 1.75				71
M14 X 2.0				80

ALL TORQUE VALUES ARE IN FOOT-POUNDS (FT.-LB.)

Figure 2

G10410

* The torque values listed above are based on dry, coated bolts, variables such as oil, or other lubrications may appreciably alter these values and must be taken into consideration.

NOTE: IT IS IMPORTANT THAT ALL FASTENERS BE PROPERLY TORQUED TO ASSURE A SAFE OPERATING PLOW. RE-TIGHTEN ALL FASTENERS AFTER 2 HOURS OF PLOWING.