

BOSS Products limited consumer warranty and BOSS Products commercial warranty policies are located at www.BOSSPlow.com.

Patent www.ttcopats.com.

Safety

- Always follow the vehicle manufacturer's recommendations relating to system installation.
- Due to the variety of equipment that you can install using the undercarriage, ensure that the gross-vehicle-weight rating (GVWR) is not exceeded at any time. You may need to weigh the vehicle and add ballast or limit the payload of the vehicle to compensate.

Installation

Determine the left and right sides of the machine from the normal operating position.

1. Park the machine on a level surface, shut off the engine, wait for all moving parts to stop, engage the parking brake, and remove the key.
2. Remove the 2 lower skid-plate bolts from the front of the vehicle.

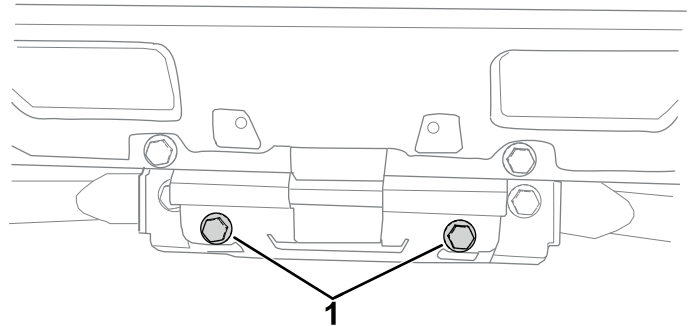


Figure 1

g515387

1. Bolts to be removed

3. Loosely install the skid-plate assembly to the upper mounting location on the vehicles front bumper using 2 bolts (1/2 x 2 inches) and 2 locknuts (1/2 inch).

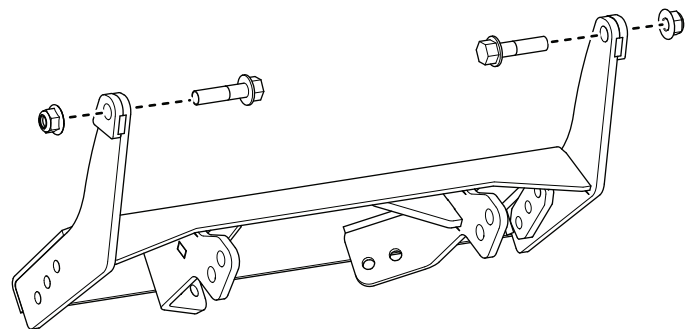


Figure 2
Vehicle not shown

g515419



- Using the existing holes and nuts on the lower part of the vehicle frame, loosely install the lower skid-plate assembly with 4 bolts (M10 x 25 mm).

Note: Ensure the tabs on the lower skid-plate assembly go over the top of the upper skid-plate assembly.

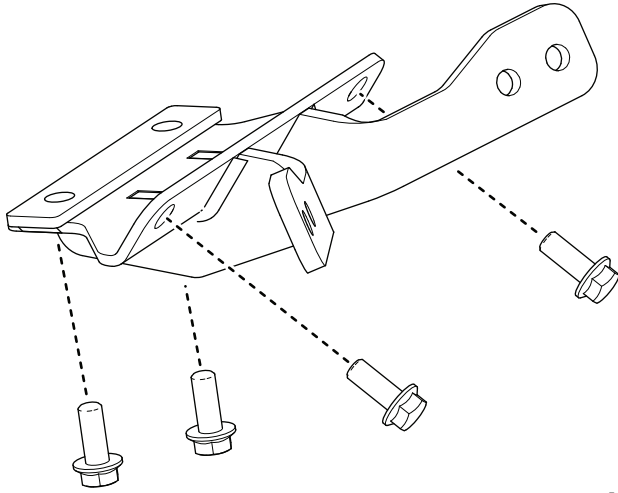


Figure 3

Vehicle not shown

g515430

- Loosely install the lower skid plate to the upper skid plate using 4 bolts (3/8 x 1-1/4 inches) and 4 locknuts (3/8 inch).

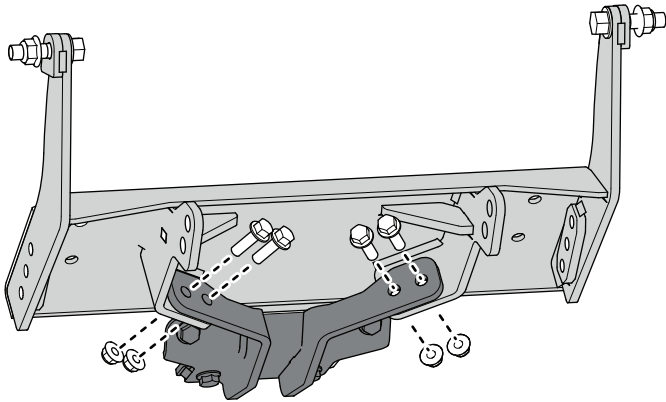


Figure 4

Vehicle not shown

g515463

- Loosely install the pushbeam assembly to the skid-plate assembly using the 4 bolts (1/2 x 1-1/2 inches) and 4 locknuts (1/2 inch).

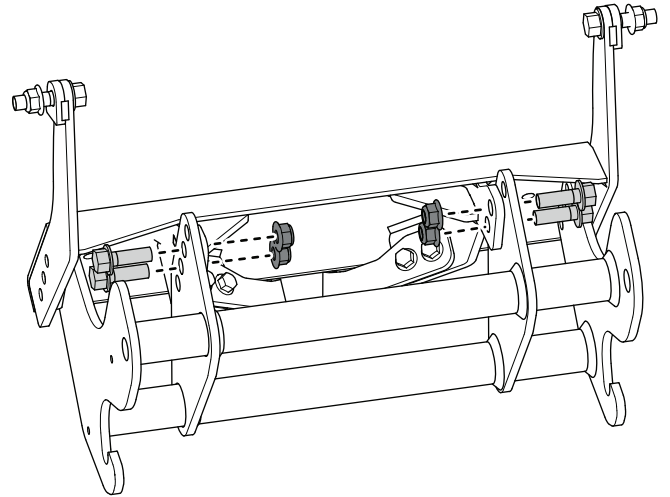


Figure 5

Vehicle not shown

g515465

- Loosely install the remaining 6 bolts (3/8 x 1-1/4 inches) and 6 locknuts (3/8 inch) to secure the pushbeam assembly to the skid-plate assembly.

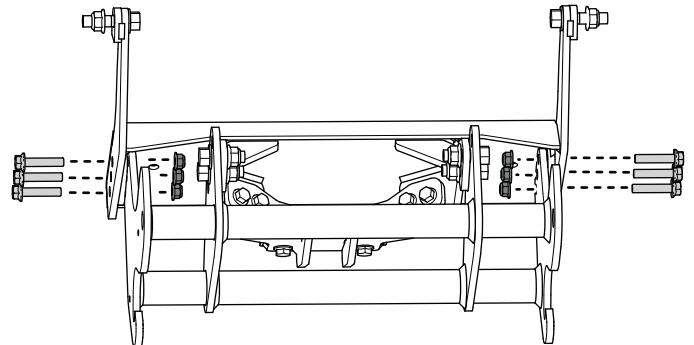


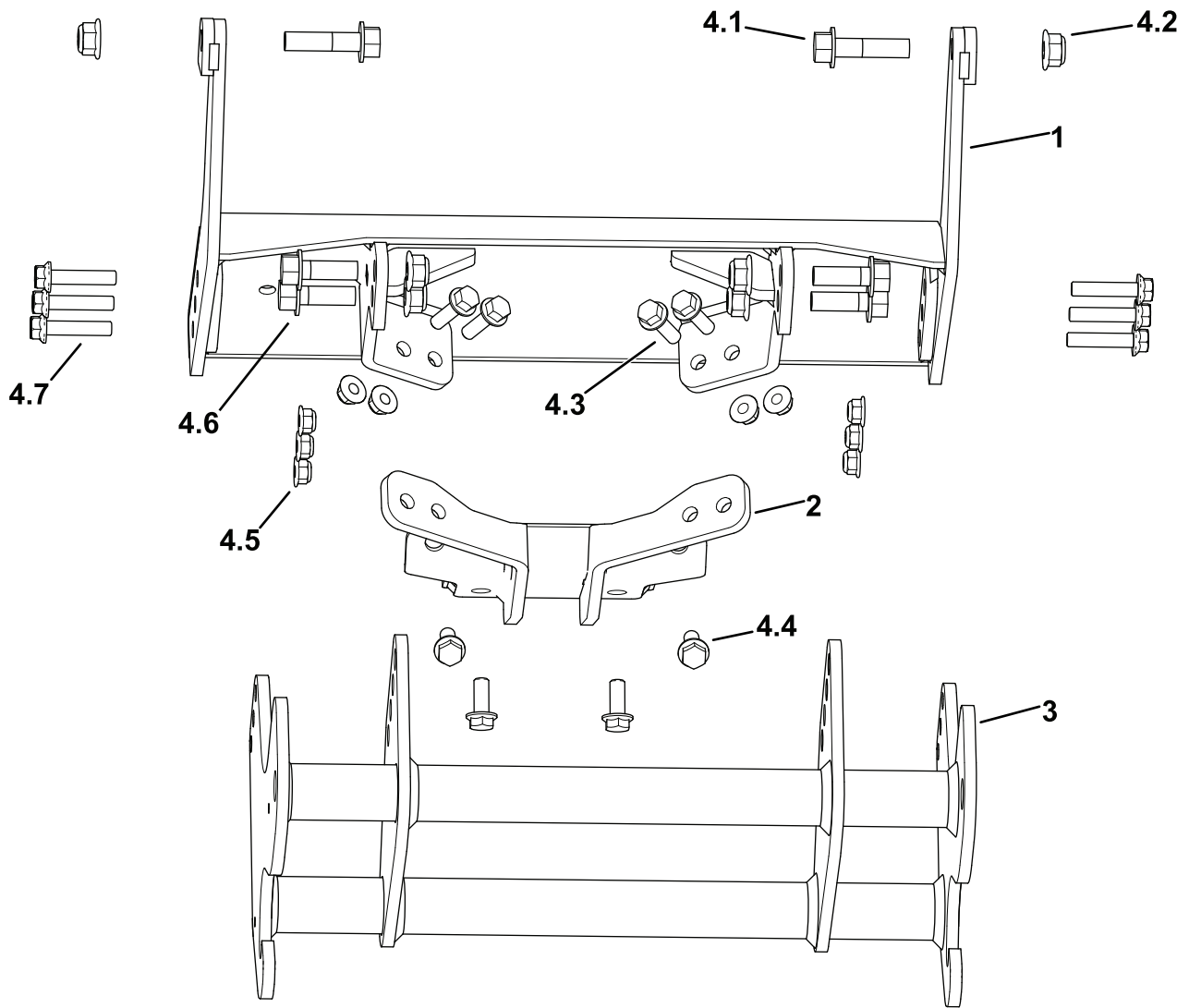
Figure 6

Vehicle not shown

g515467

- Torque all the fasteners to the following specifications:

- 3/8-inch bolts: 35 N·m (26 ft-lb)
- 1/2-inch bolts: 80 N·m (59 ft-lb)
- M10 bolts: 66 N·m (49 ft-lb)



g515470

Figure 7
Parts

| Ref. | Part Number | Qty. | Description | Ref. | Part Number | Qty. | Description |
|------|-------------|------|---|------|-------------|------|------------------------------------|
| 1 | LTA28261-03 | 1 | SKID PLT WLMT,POLARIS XPEDITION,24+ [BLACK] | 4.1 | HDW27949 | 2 | SCREW-HHF[1/2-13 X 2.0, GR5, BZ] |
| 2 | LTA28275-03 | 1 | SKID PLT WLMT LWR,POLARIS XPEDITION,24+ | 4.2 | HDW27963 | 6 | NUT-HF [1/2-13, NYLOCK, GR N5, BZ] |
| 3 | PBA27999-03 | 1 | PUSHBEAM ASM RT3,UTV,DROP [BLACK] | 4.3 | HDW27943 | 4 | SCREW-HHF [3/8-16 X 1.25, GR5, BZ] |
| 4 | HDW28280 | 1 | KIT-FASTENER,UC,POLARIS XPEDITION,24+ | 4.4 | HDW28281 | 4 | SCREW-HHF[M10-1.5 X 25,CL10.9 BZ] |
| | | | | 4.5 | HDW27962 | 10 | NUT-HF [3/8-16, NYLOCK, GR N5, BZ] |
| | | | | 4.6 | HDW27948 | 4 | SCREW-HHF [1/2-13 X 1.5, GR5, BZ] |
| | | | | 4.7 | 139-2594 | 6 | SCREW-HHF [3/8-16 X 1.75, GR5, BZ] |

BOSS
S N O W P L O W